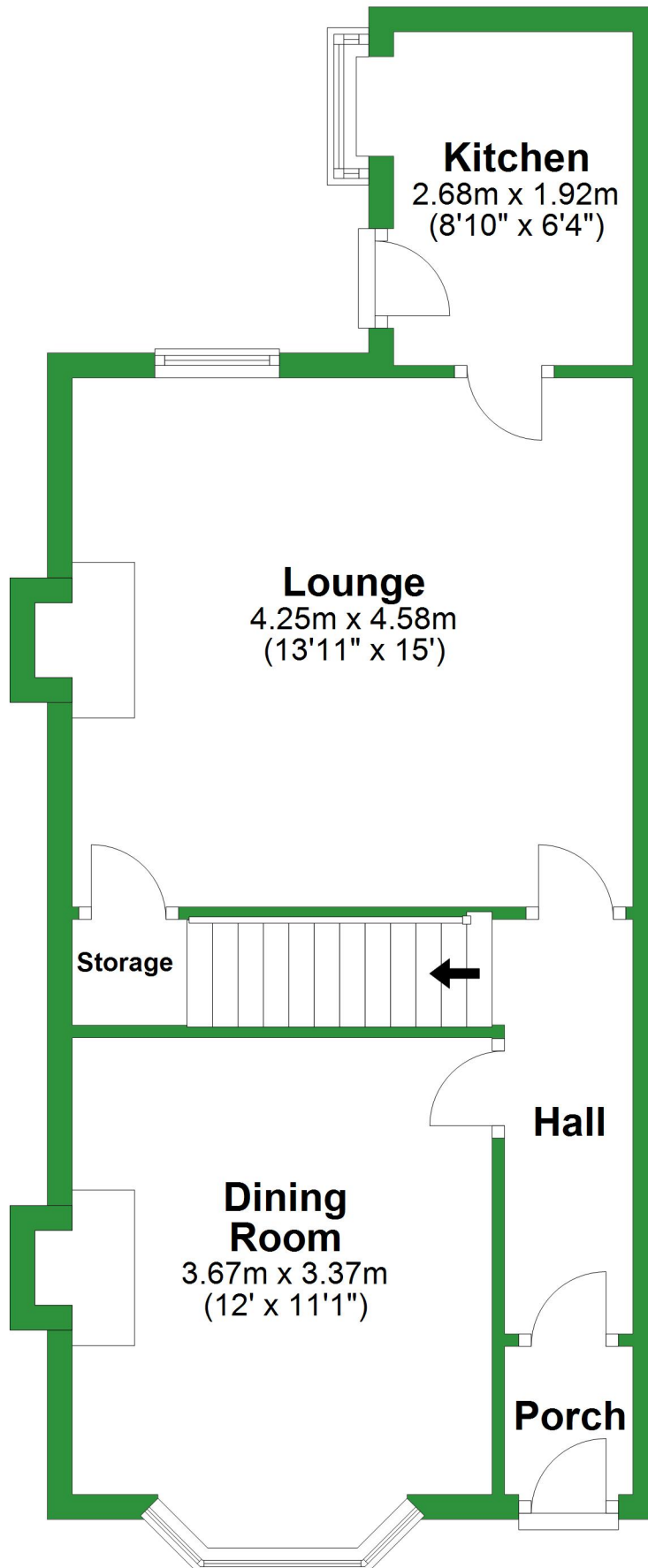


# Ground Floor

Approx. 46.1 sq. metres (496.0 sq. feet)

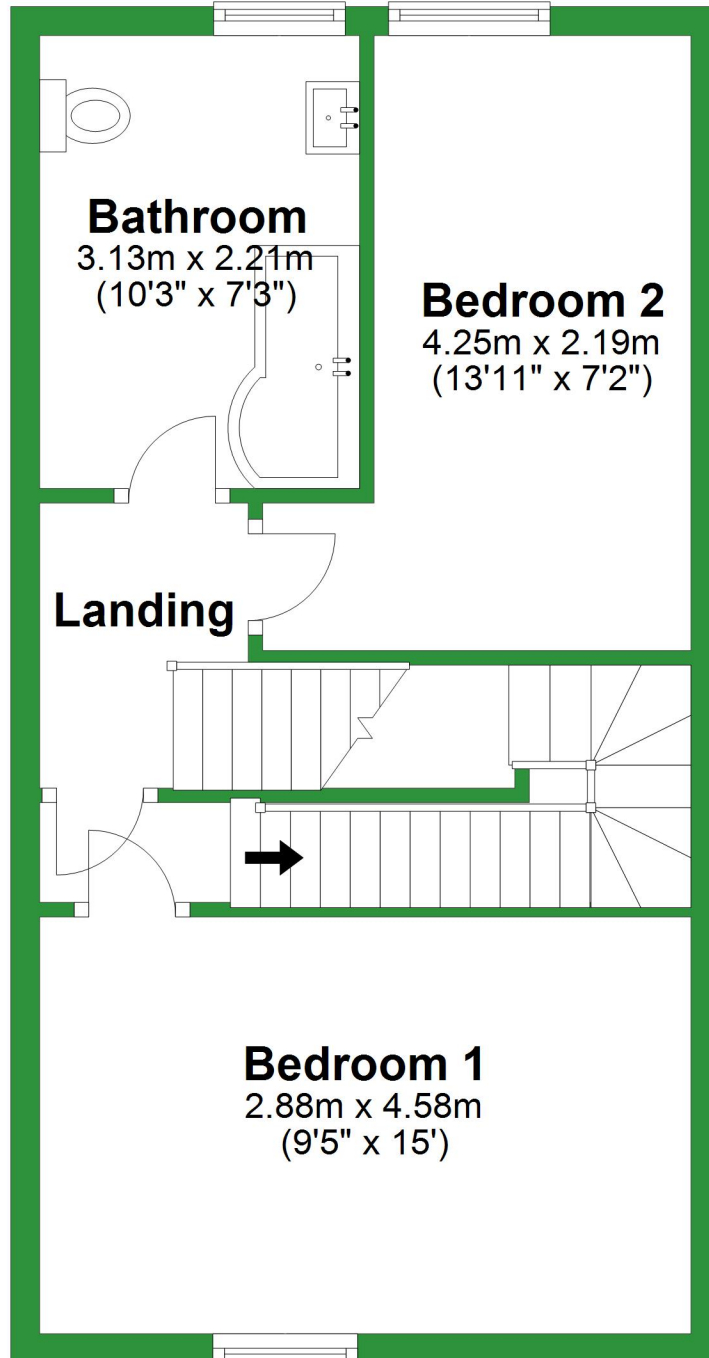


Total area: approx. 108.7 sq. metres (1170.4 sq. feet)

For illustrative purposes only. Not to scale. All sizes are approximate.  
Plan produced using PlanUp.

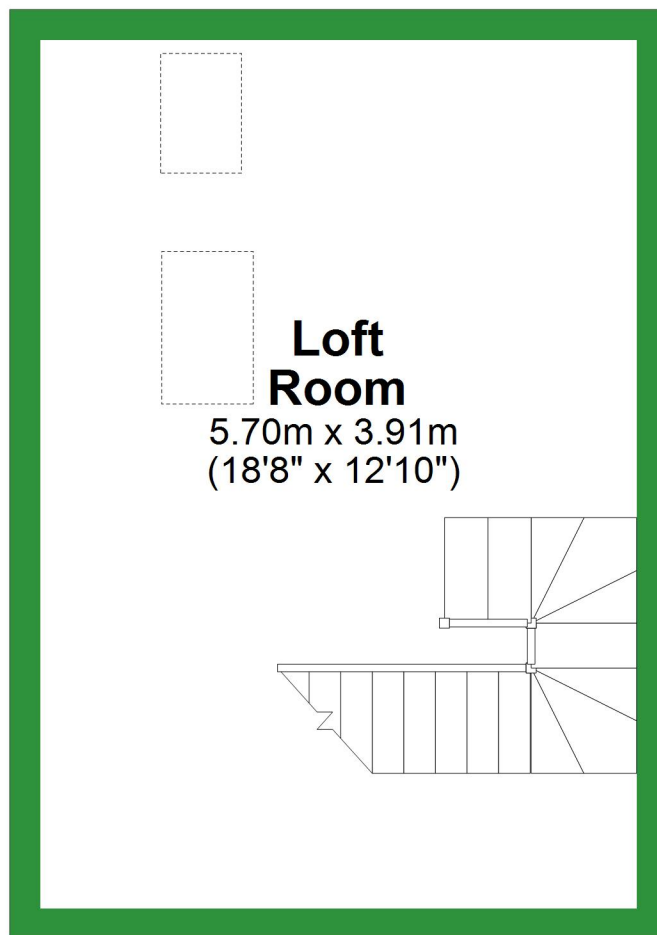
# First Floor

Approx. 40.4 sq. metres (434.5 sq. feet)



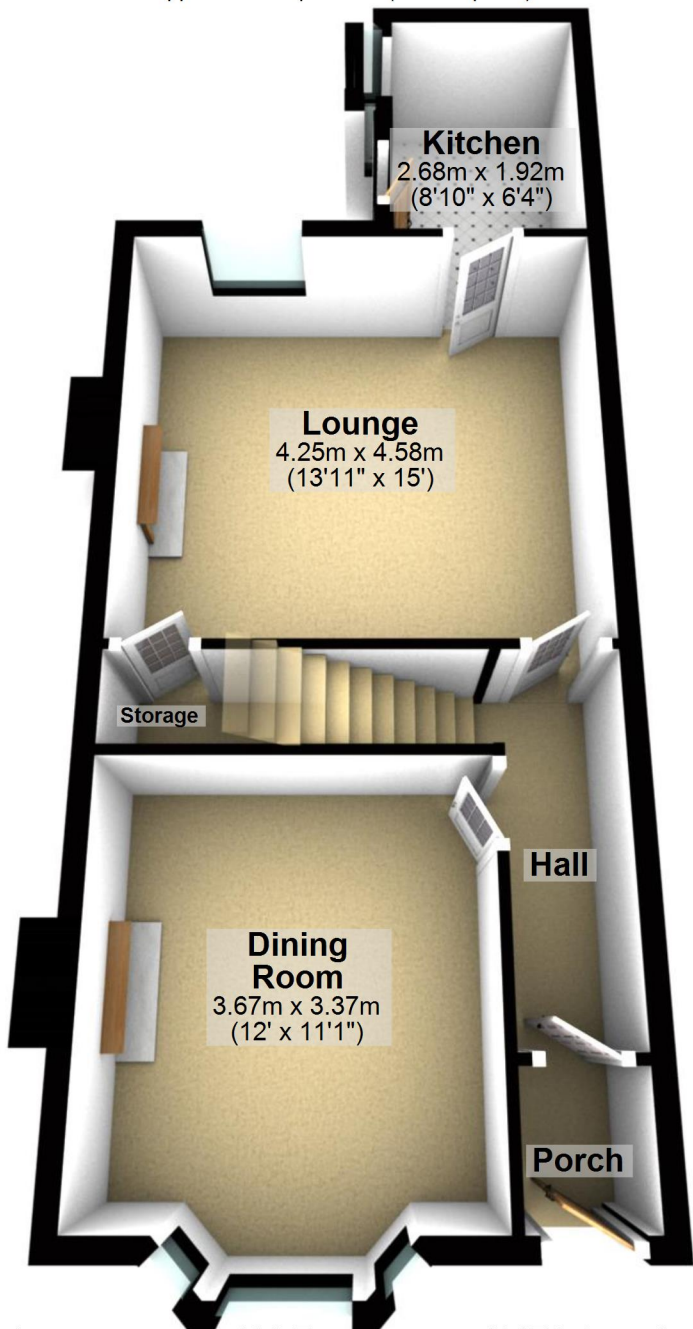
## Second Floor

Approx. 22.3 sq. metres (239.9 sq. feet)



# Ground Floor

Approx. 46.1 sq. metres (496.0 sq. feet)



## Kitchen

2.68m x 1.92m  
(8'10" x 6'4")

## Lounge

4.25m x 4.58m  
(13'11" x 15')

## Dining Room

3.67m x 3.37m  
(12' x 11'1")

## Hall

## Porch

## Storage

Total area: approx. 108.7 sq. metres (1170.4 sq. feet)

For illustrative purposes only. Not to scale. All sizes are approximate.

Plan produced using PlanUp.

# First Floor

Approx. 40.4 sq. metres (434.5 sq. feet)

## Bathroom

3.13m x 2.21m  
(10'3" x 7'3")

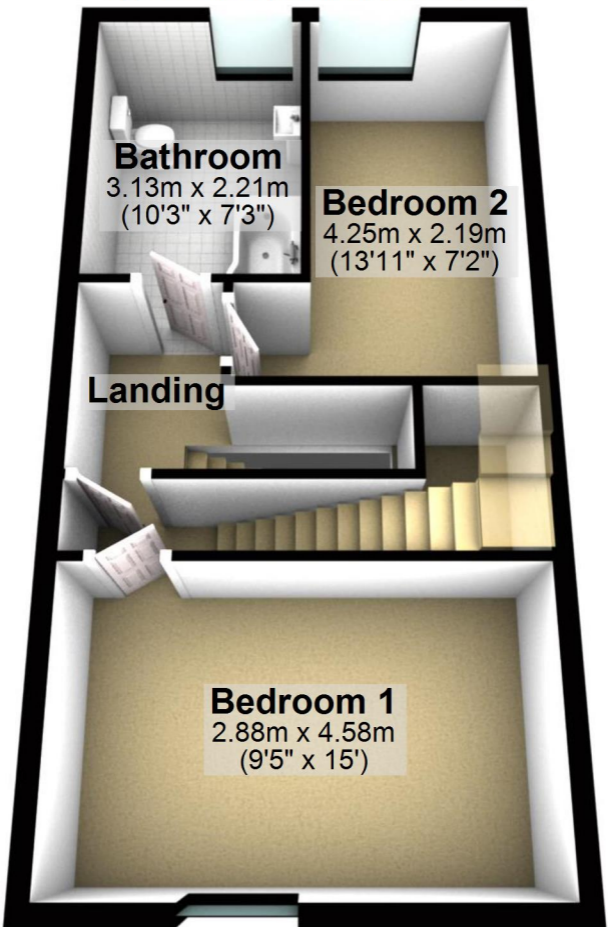
## Bedroom 2

4.25m x 2.19m  
(13'11" x 7'2")

## Landing

## Bedroom 1

2.88m x 4.58m  
(9'5" x 15')



## Second Floor

Approx. 22.3 sq. metres (239.9 sq. feet)

### Loft Room

5.70m x 3.91m  
(18'8" x 12'10")

