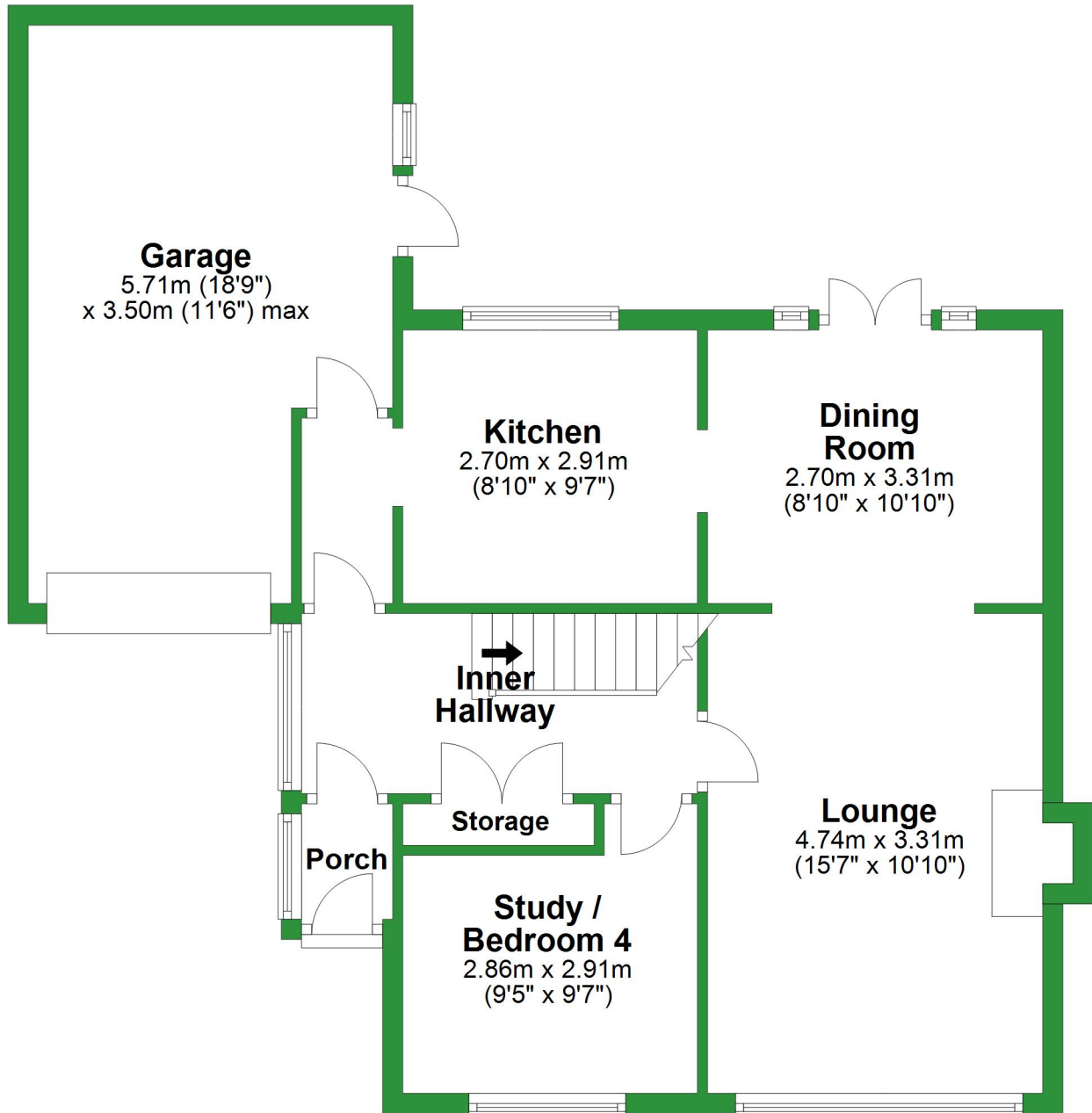


# Ground Floor

Approx. 71.2 sq. metres (766.6 sq. feet)



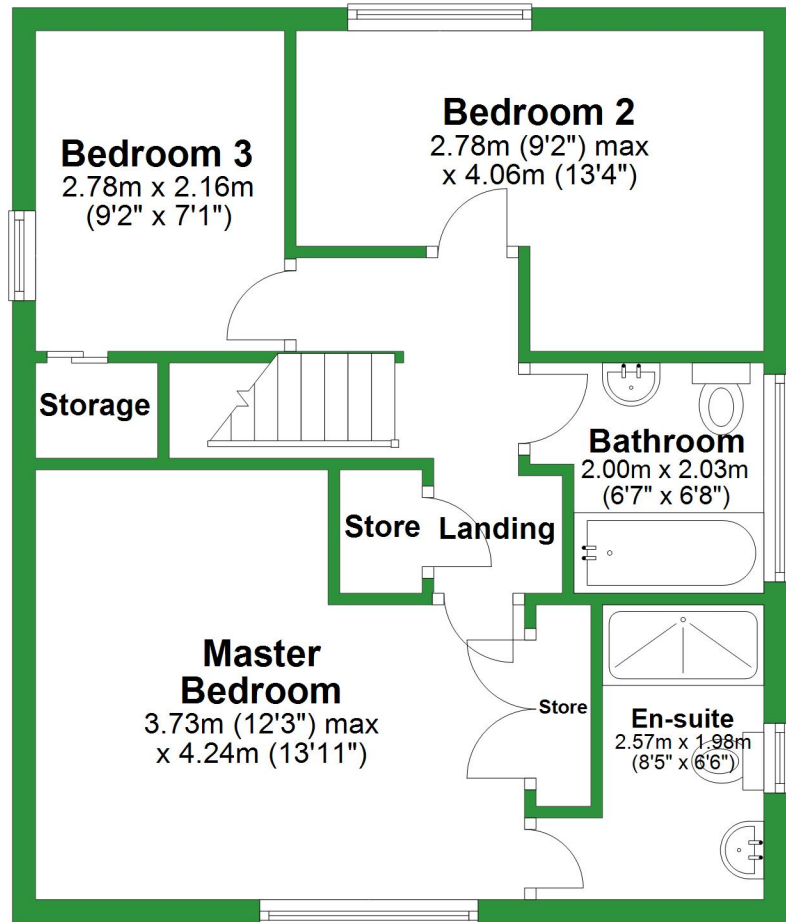
Total area: approx. 119.1 sq. metres (1281.5 sq. feet)

For illustrative purposes only. Not to scale. All sizes are approximate.

Plan produced using PlanUp.

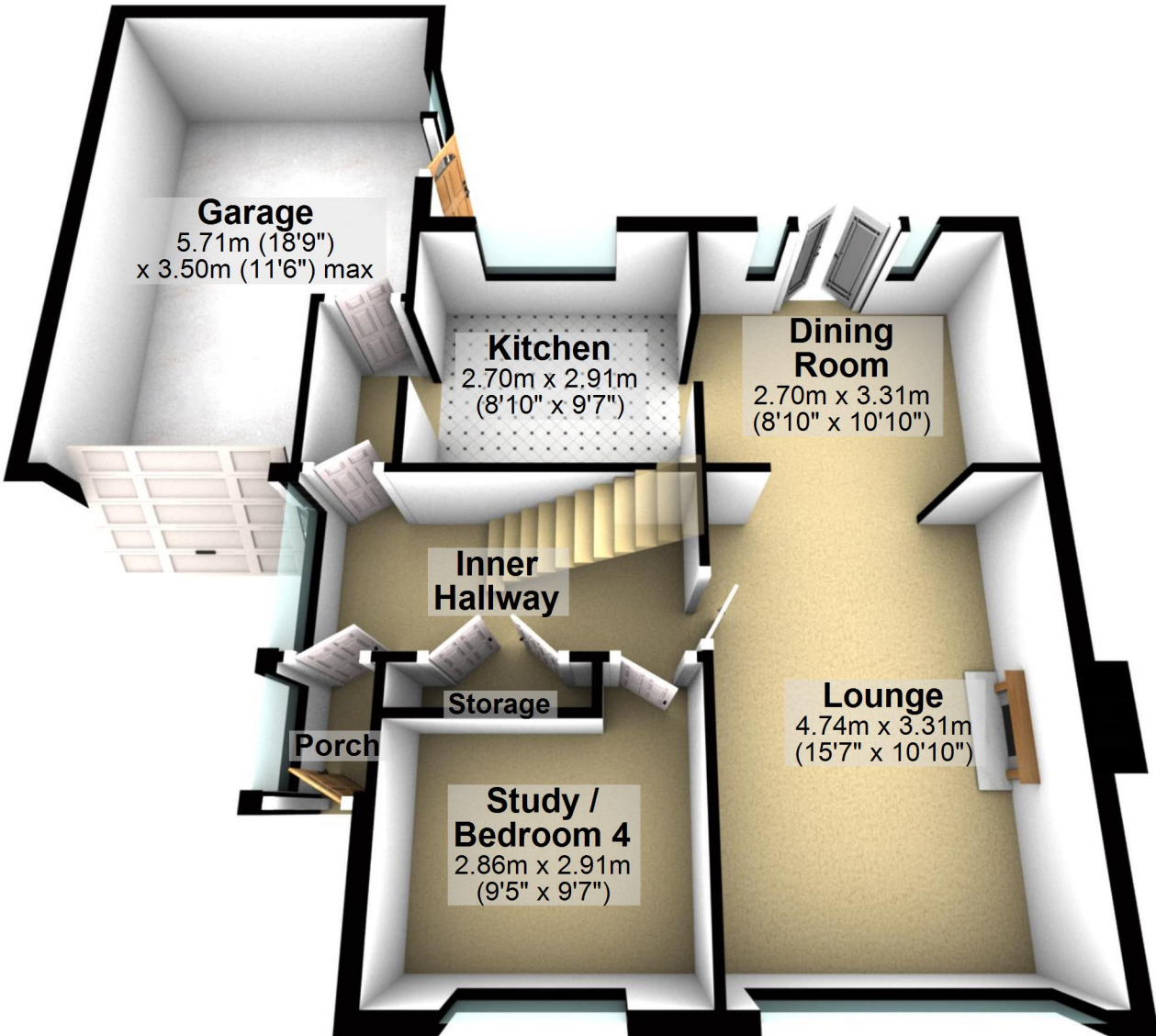
# First Floor

Approx. 47.8 sq. metres (514.8 sq. feet)



# Ground Floor

Approx. 71.2 sq. metres (766.6 sq. feet)



Total area: approx. 119.1 sq. metres (1281.5 sq. feet)

For illustrative purposes only. Not to scale. All sizes are approximate.

Plan produced using PlanUp.

# First Floor

Approx. 47.8 sq. metres (514.8 sq. feet)

**Bedroom 3**  
2.78m x 2.16m  
(9'2" x 7'1")

**Bedroom 2**  
2.78m (9'2") max  
x 4.06m (13'4")

Storage

Store

Landing

**Bathroom**  
2.00m x 2.03m  
(6'7" x 6'8")

**Master  
Bedroom**  
3.73m (12'3") max  
x 4.24m (13'11")

Store

**En-suite**  
2.57m x 1.98m  
(8'5" x 6'6")

