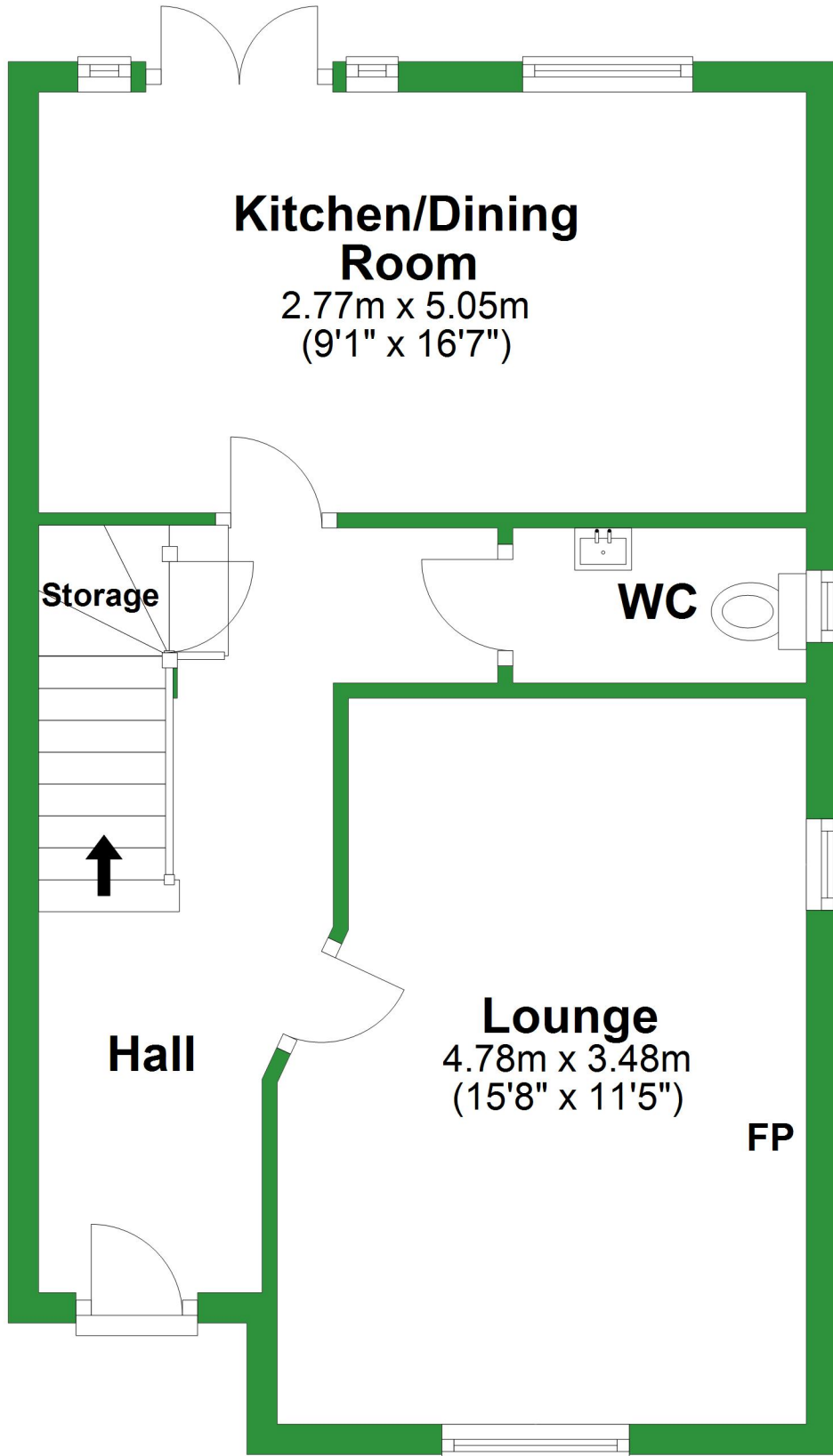


# Ground Floor

Approx. 42.9 sq. metres (462.0 sq. feet)



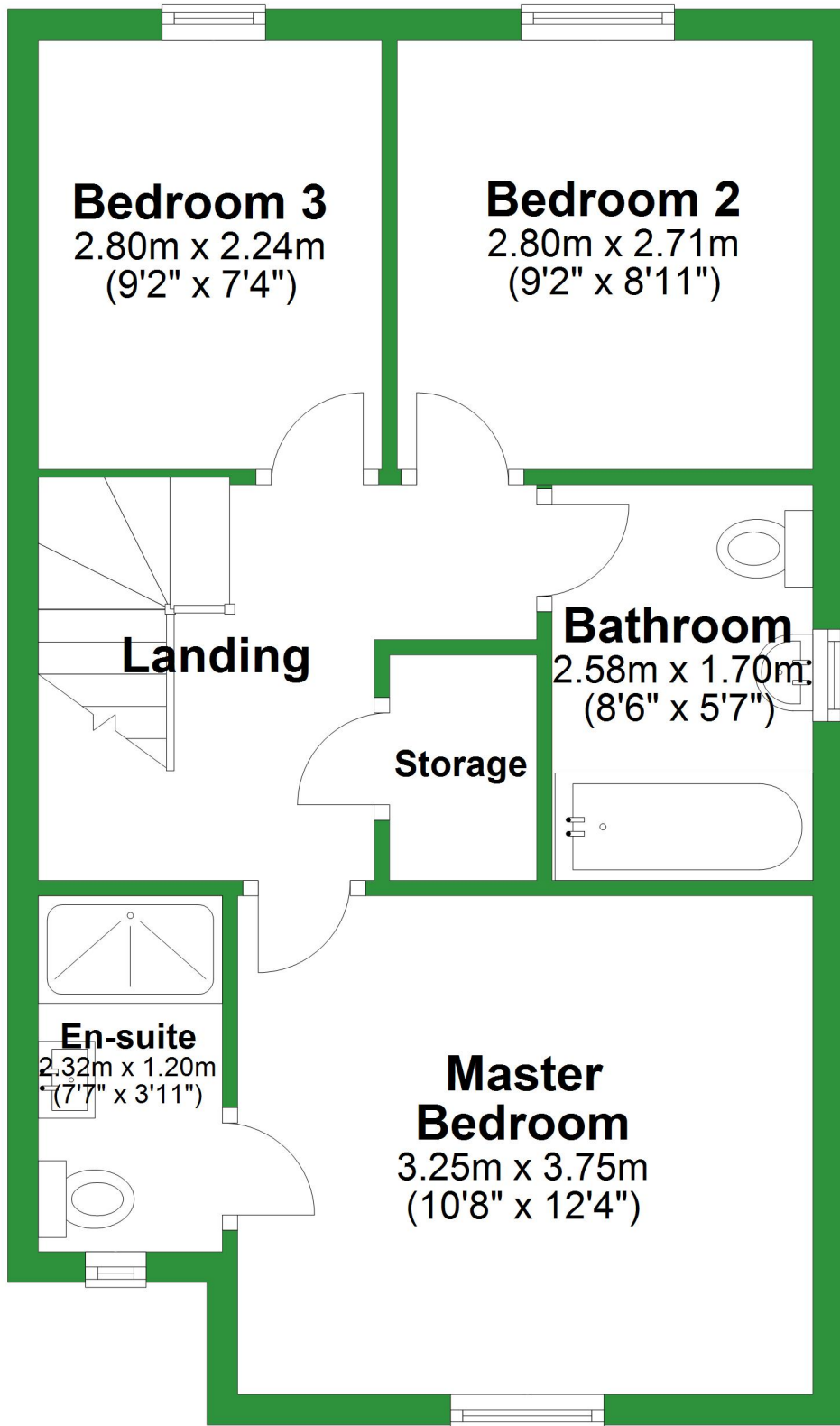
Total area: approx. 86.3 sq. metres (929.0 sq. feet)

For illustrative purposes only. Not to scale. All sizes are approximate.

Plan produced using PlanUp.

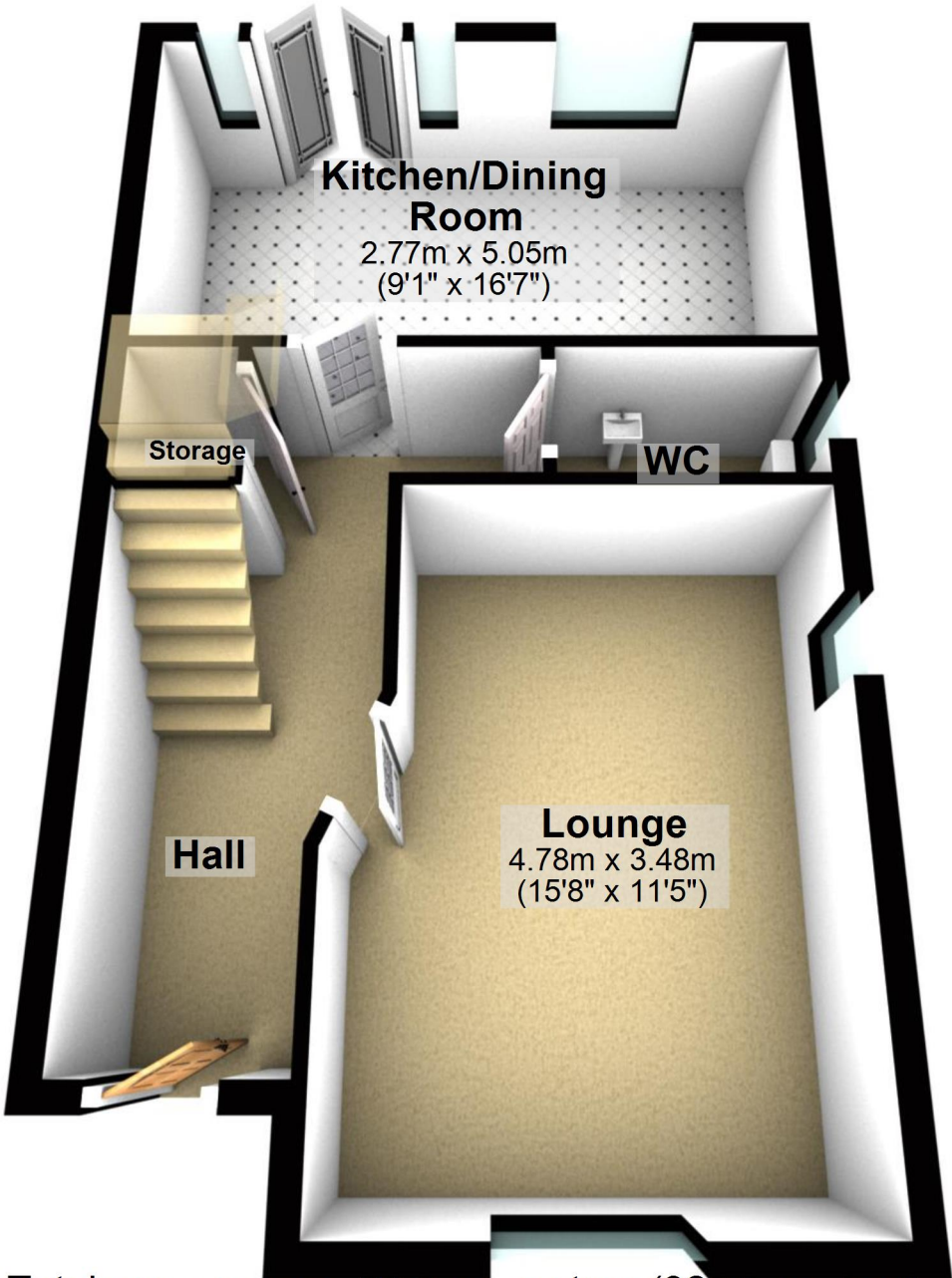
# First Floor

Approx. 43.4 sq. metres (467.0 sq. feet)



# Ground Floor

Approx. 42.9 sq. metres (462.0 sq. feet)



## Kitchen/Dining Room

2.77m x 5.05m  
(9'1" x 16'7")

Storage

WC

Hall

## Lounge

4.78m x 3.48m  
(15'8" x 11'5")

Total area: approx. 86.3 sq. metres (929.0 sq. feet)

For illustrative purposes only. Not to scale. All sizes are approximate.

Plan produced using PlanUp.

# First Floor

Approx. 43.4 sq. metres (467.0 sq. feet)

**Bedroom 3**  
2.80m x 2.24m  
(9'2" x 7'4")

**Bedroom 2**  
2.80m x 2.71m  
(9'2" x 8'11")

**Landing**

**Bathroom**  
2.58m x 1.70m  
(8'6" x 5'7")

**Storage**

**En-suite**  
2.32m x 1.20m  
(7'7" x 3'11")

**Master  
Bedroom**  
3.25m x 3.75m  
(10'8" x 12'4")

