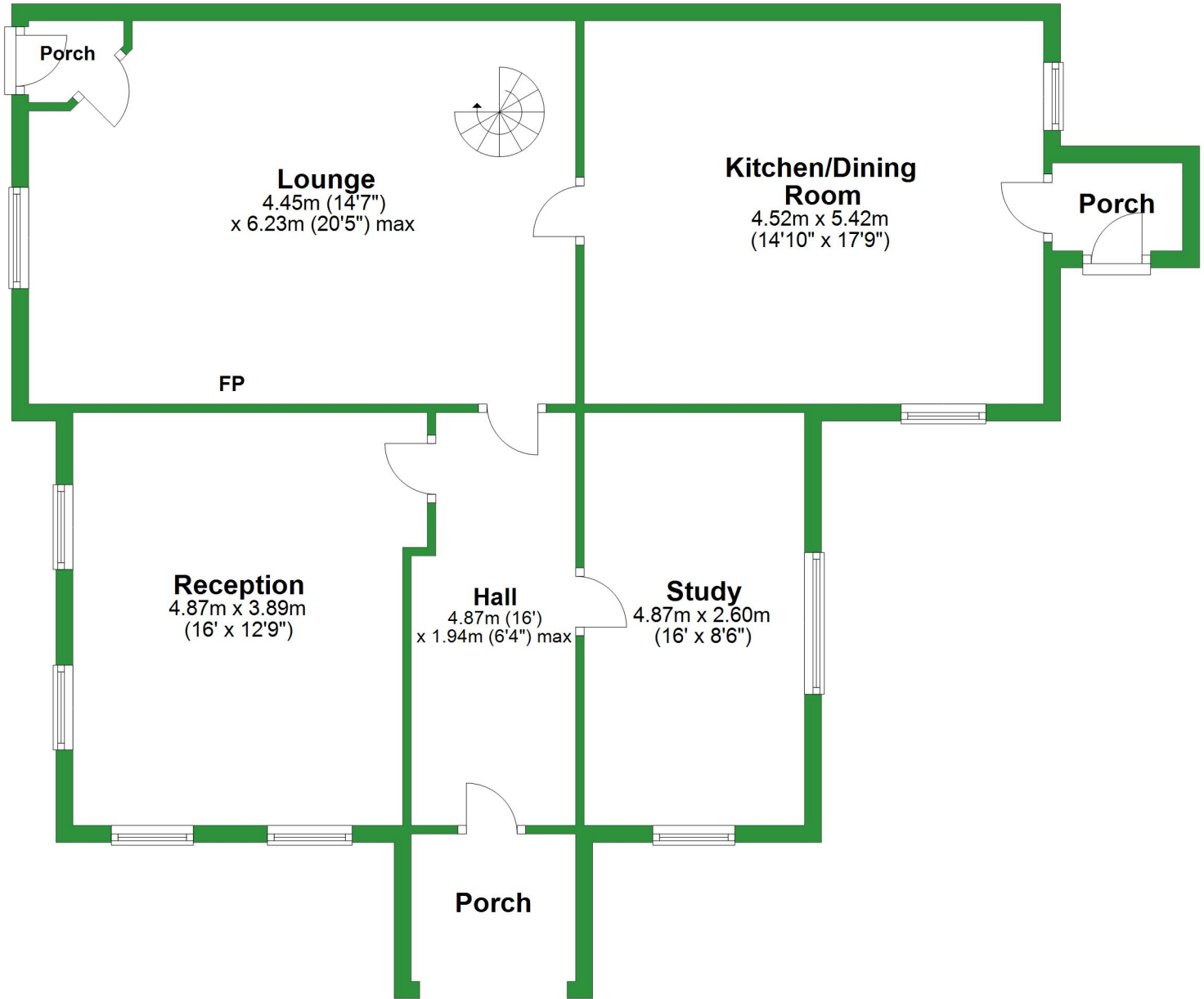


Ground Floor

Approx. 102.3 sq. metres (1100.9 sq. feet)

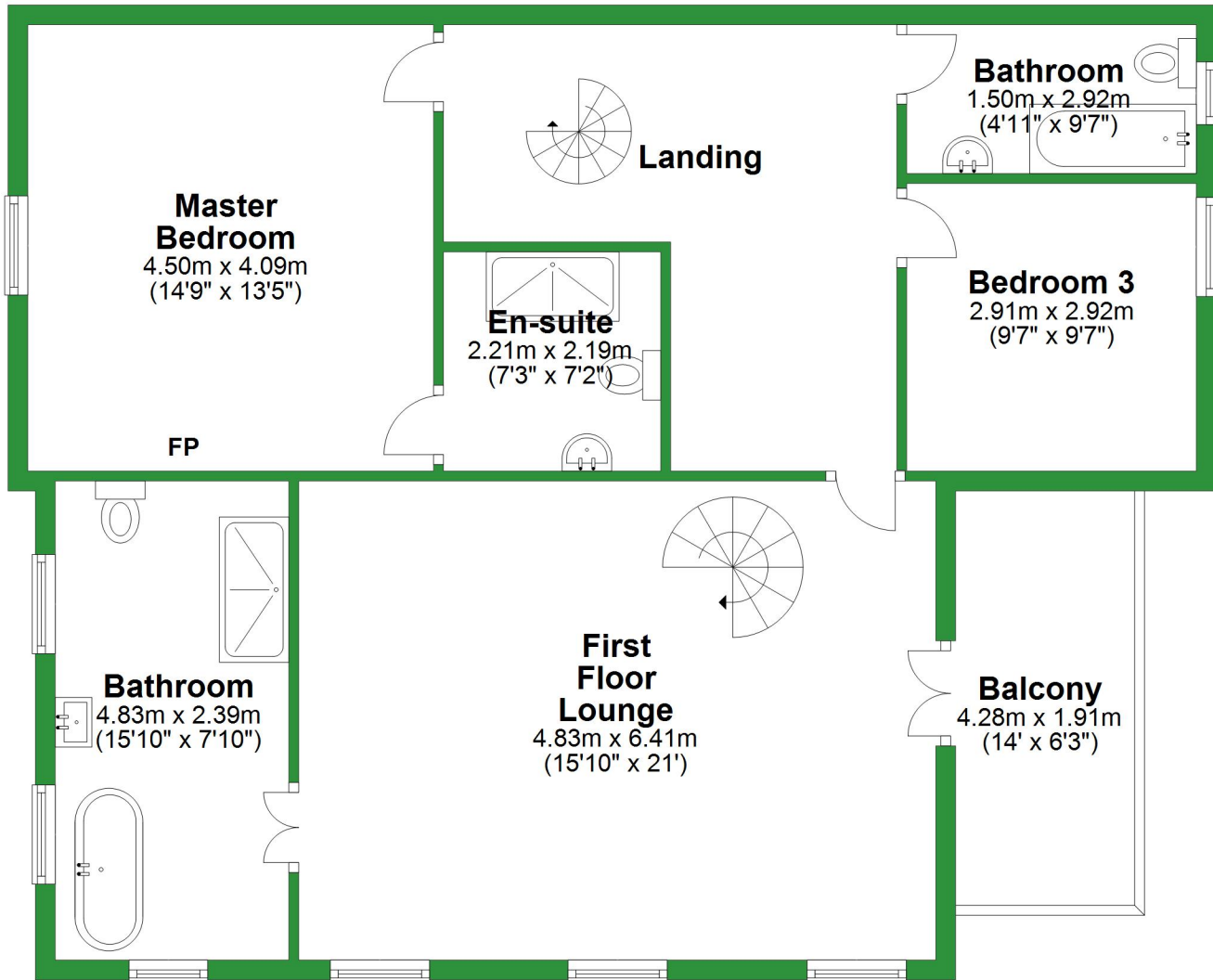


Total area: approx. 257.9 sq. metres (2776.1 sq. feet)

For illustrative purposes only. Not to scale. All sizes are approximate.
Plan produced using PlanUp.

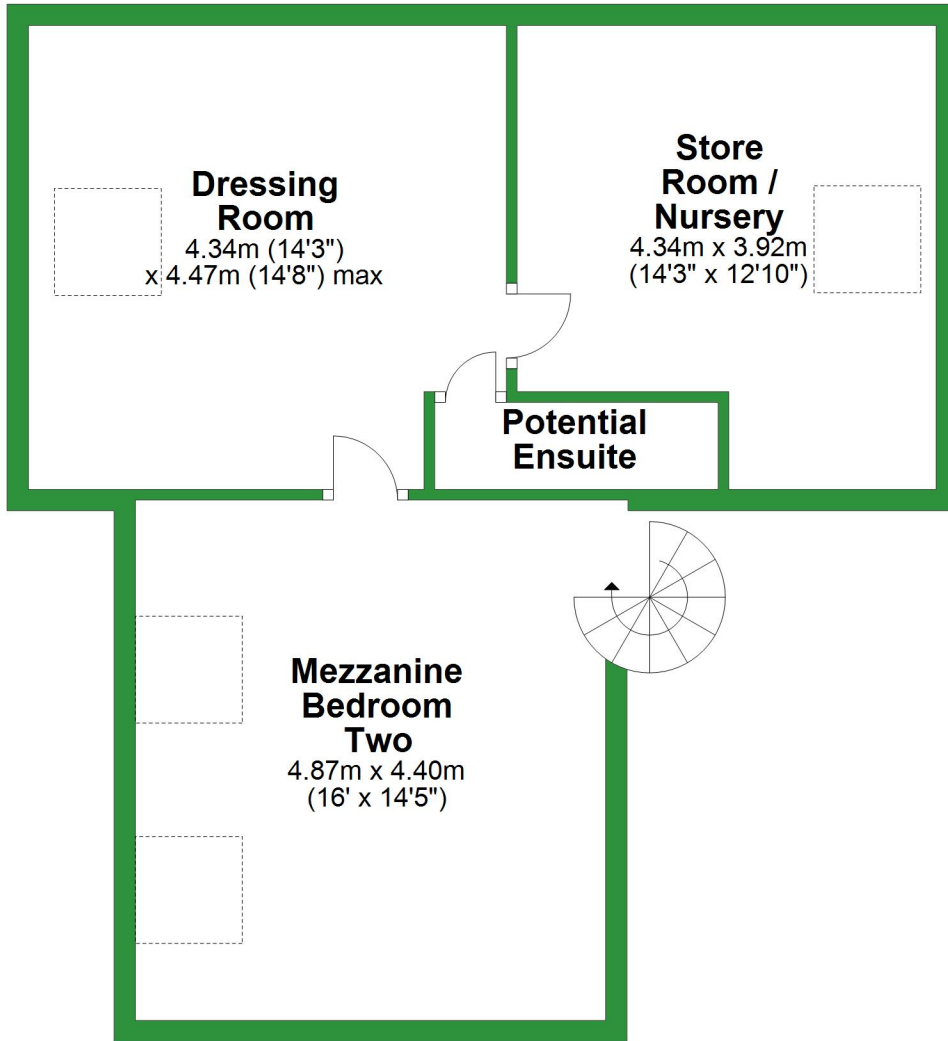
First Floor

Approx. 96.9 sq. metres (1043.2 sq. feet)



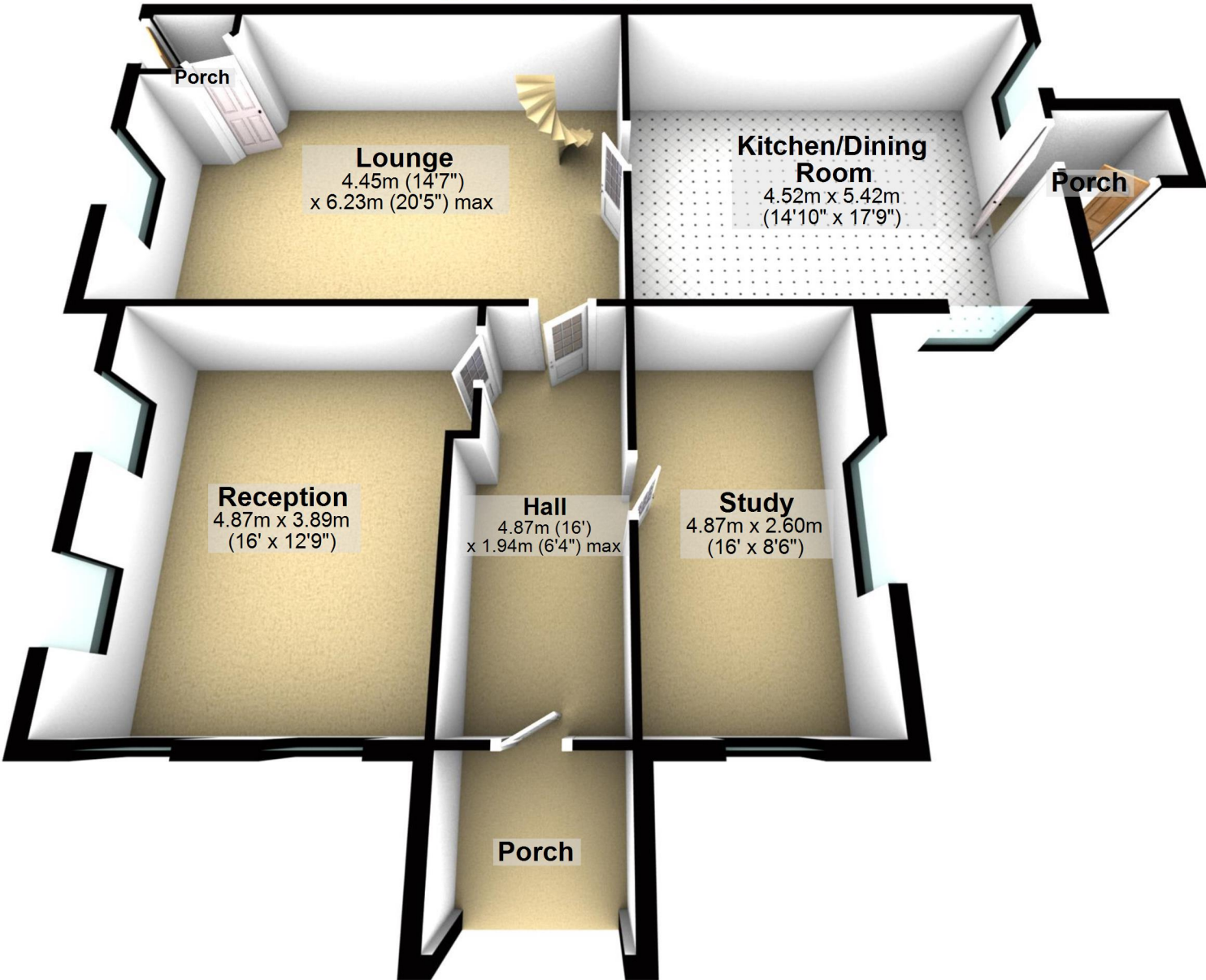
Second Floor

Approx. 58.7 sq. metres (632.0 sq. feet)



Ground Floor

Approx. 102.3 sq. metres (1100.9 sq. feet)

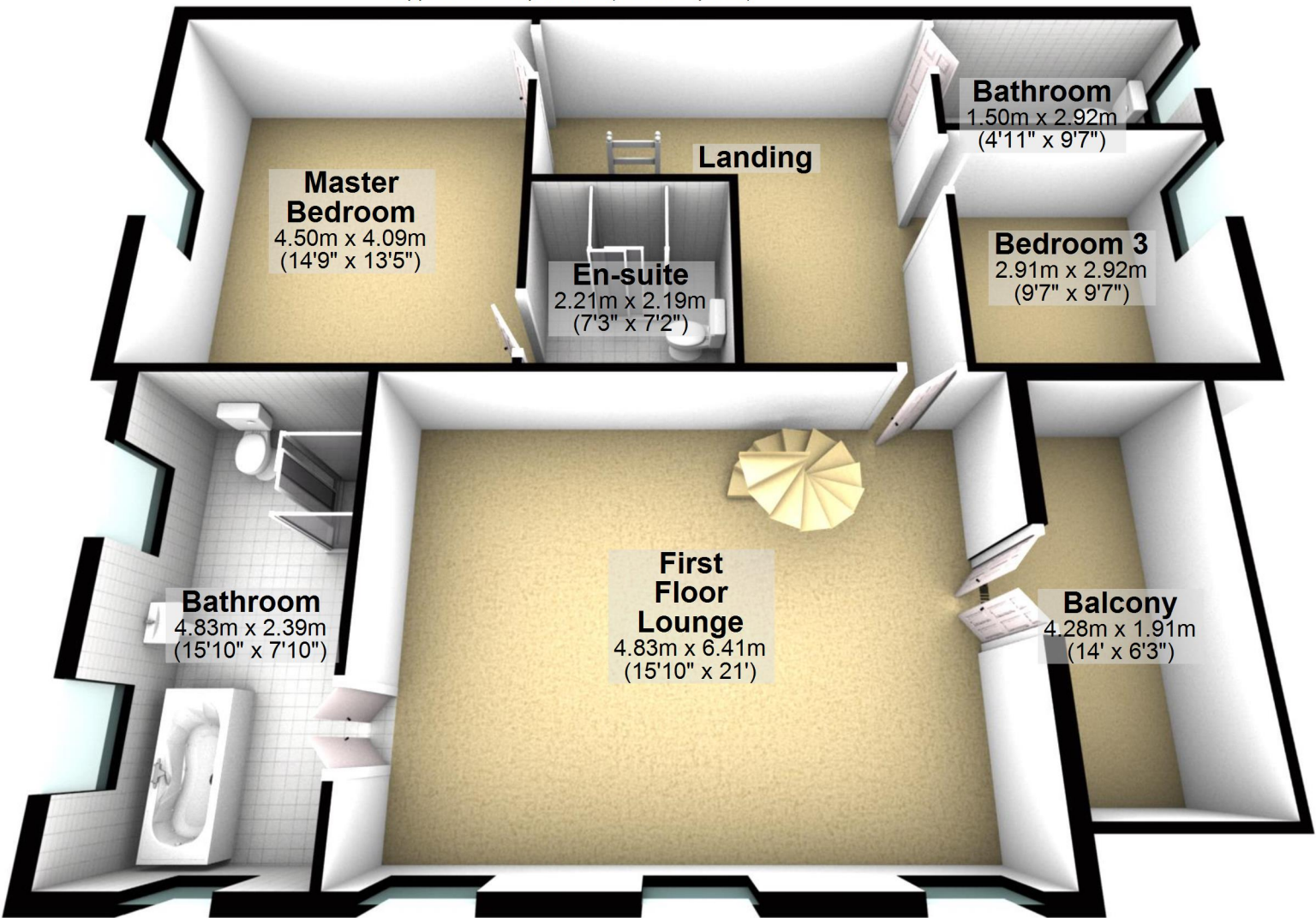


Total area: approx. 257.9 sq. metres (2776.1 sq. feet)

For illustrative purposes only. Not to scale. All sizes are approximate.
Plan produced using PlanUp.

First Floor

Approx. 96.9 sq. metres (1043.2 sq. feet)



Master Bedroom
4.50m x 4.09m
(14'9" x 13'5")

En-suite
2.21m x 2.19m
(7'3" x 7'2")

Bathroom
1.50m x 2.92m
(4'11" x 9'7")

Bedroom 3
2.91m x 2.92m
(9'7" x 9'7")

Landing

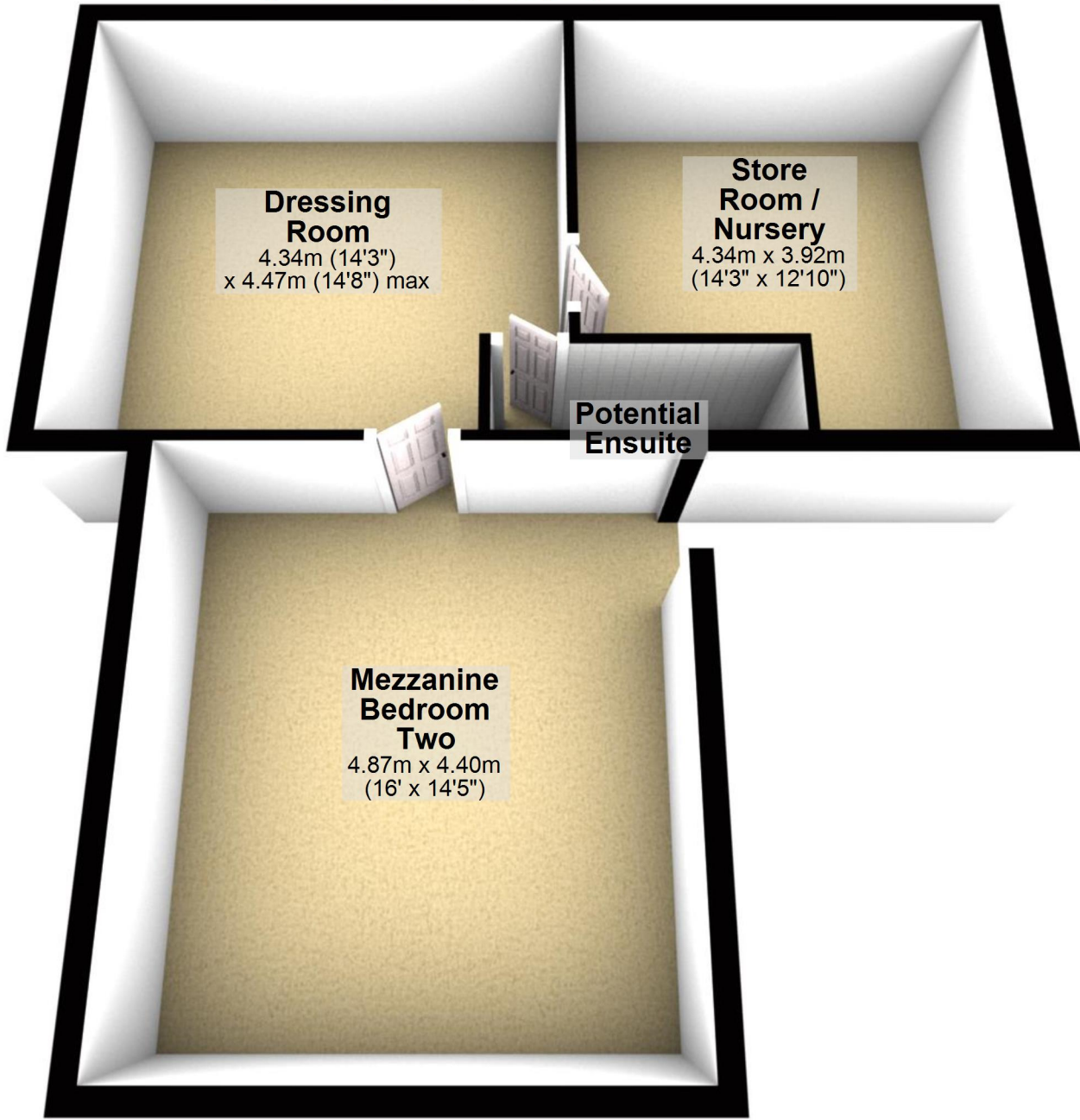
Bathroom
4.83m x 2.39m
(15'10" x 7'10")

First Floor Lounge
4.83m x 6.41m
(15'10" x 21')

Balcony
4.28m x 1.91m
(14' x 6'3")

Second Floor

Approx. 58.7 sq. metres (632.0 sq. feet)



Dressing Room

4.34m (14'3")
x 4.47m (14'8") max

Store Room / Nursery

4.34m x 3.92m
(14'3" x 12'10")

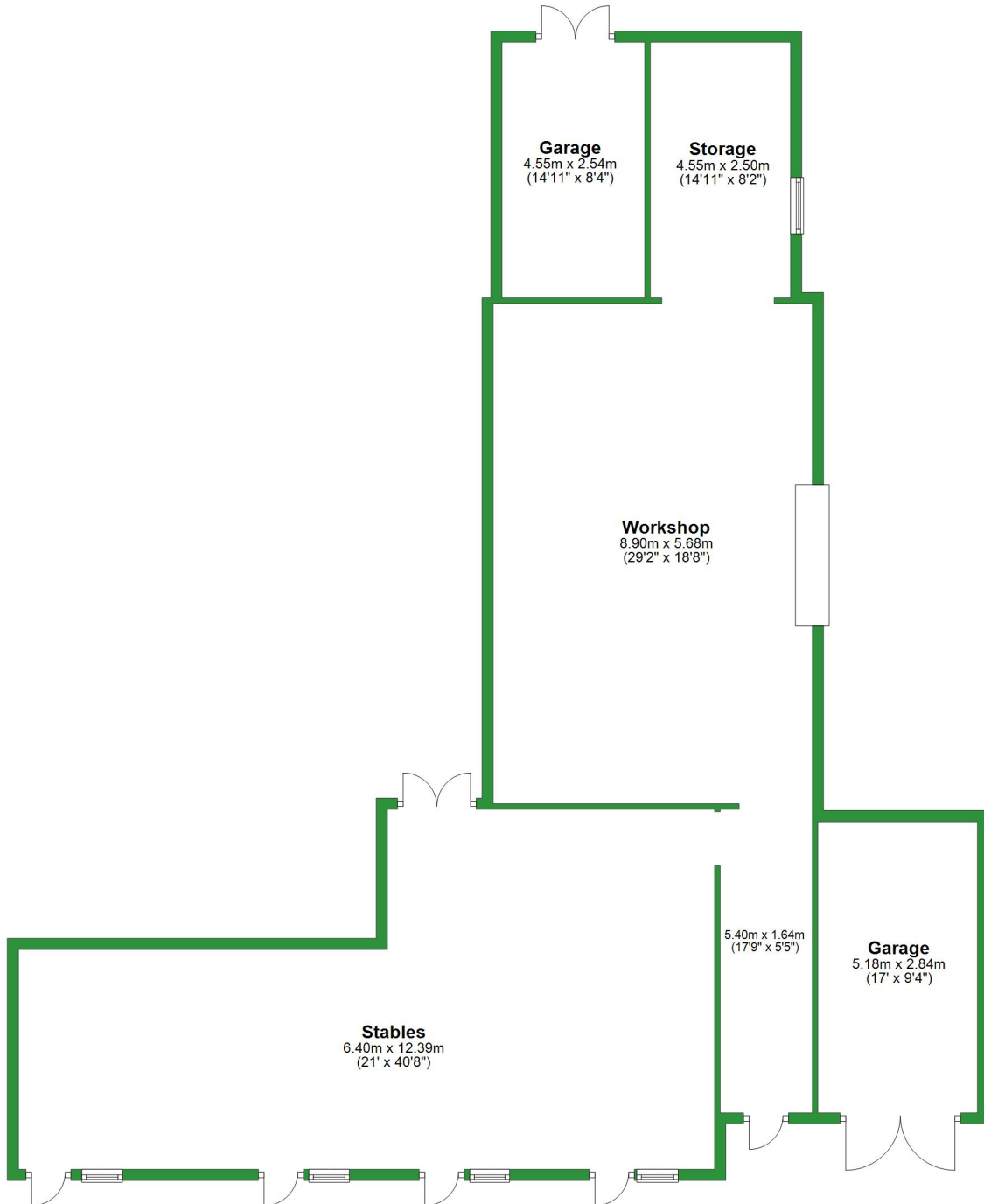
Potential Ensuite

Mezzanine Bedroom Two

4.87m x 4.40m
(16' x 14'5")

Ground Floor

Approx. 162.6 sq. metres (1750.3 sq. feet)

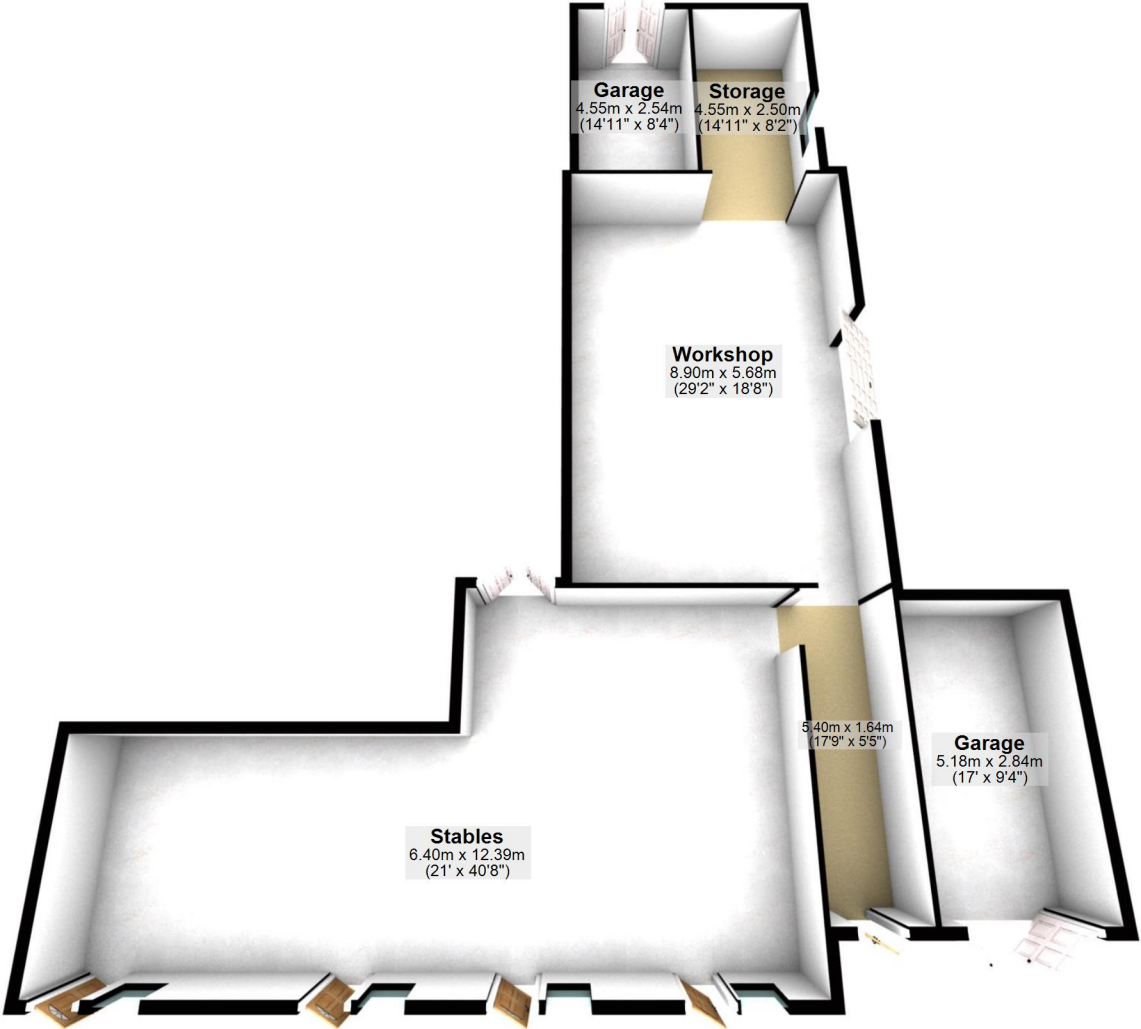


Total area: approx. 162.6 sq. metres (1750.3 sq. feet)

For illustrative purposes only. Not to scale. All sizes are approximate.
Plan produced using PlanUp.

Ground Floor

Approx. 162.6 sq. metres (1750.3 sq. feet)



Total area: approx. 162.6 sq. metres (1750.3 sq. feet)

For illustrative purposes only. Not to scale. All sizes are approximate.
Plan produced using PlanUp.