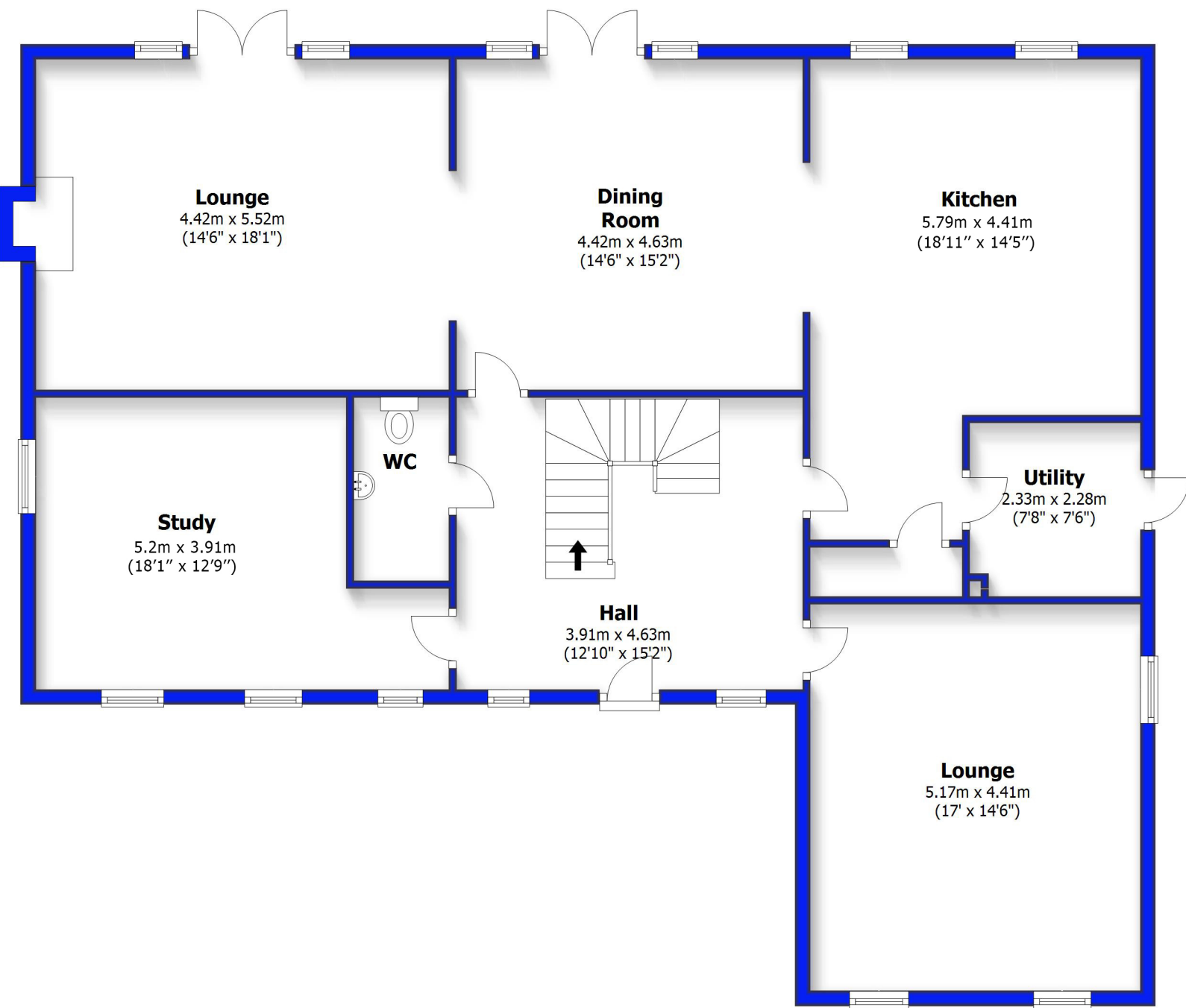


Ground Floor

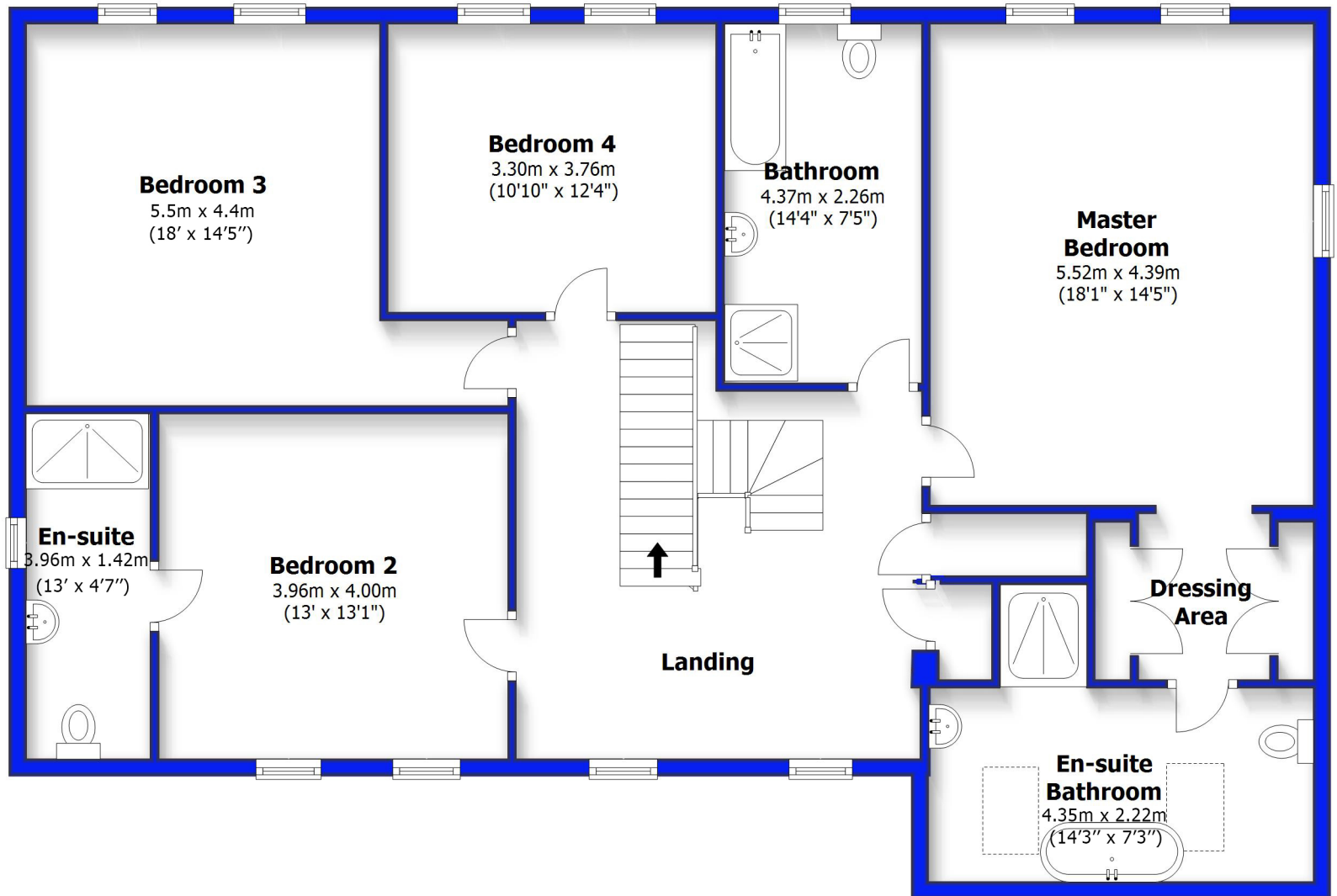
Approx. 142.2 sq. metres (1530.5 sq. feet)



Total area: approx. 328.4 sq. metres (3534.7 sq. feet)

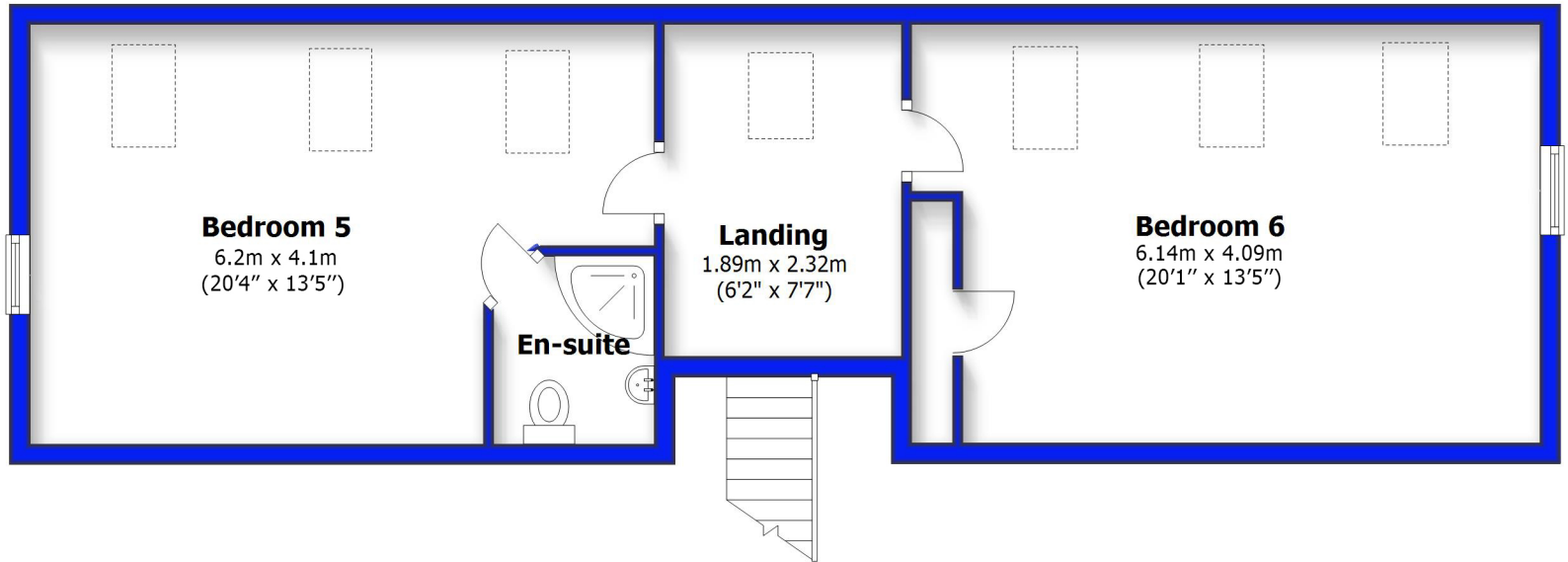
First Floor

Approx. 131.2 sq. metres (1412.2 sq. feet)



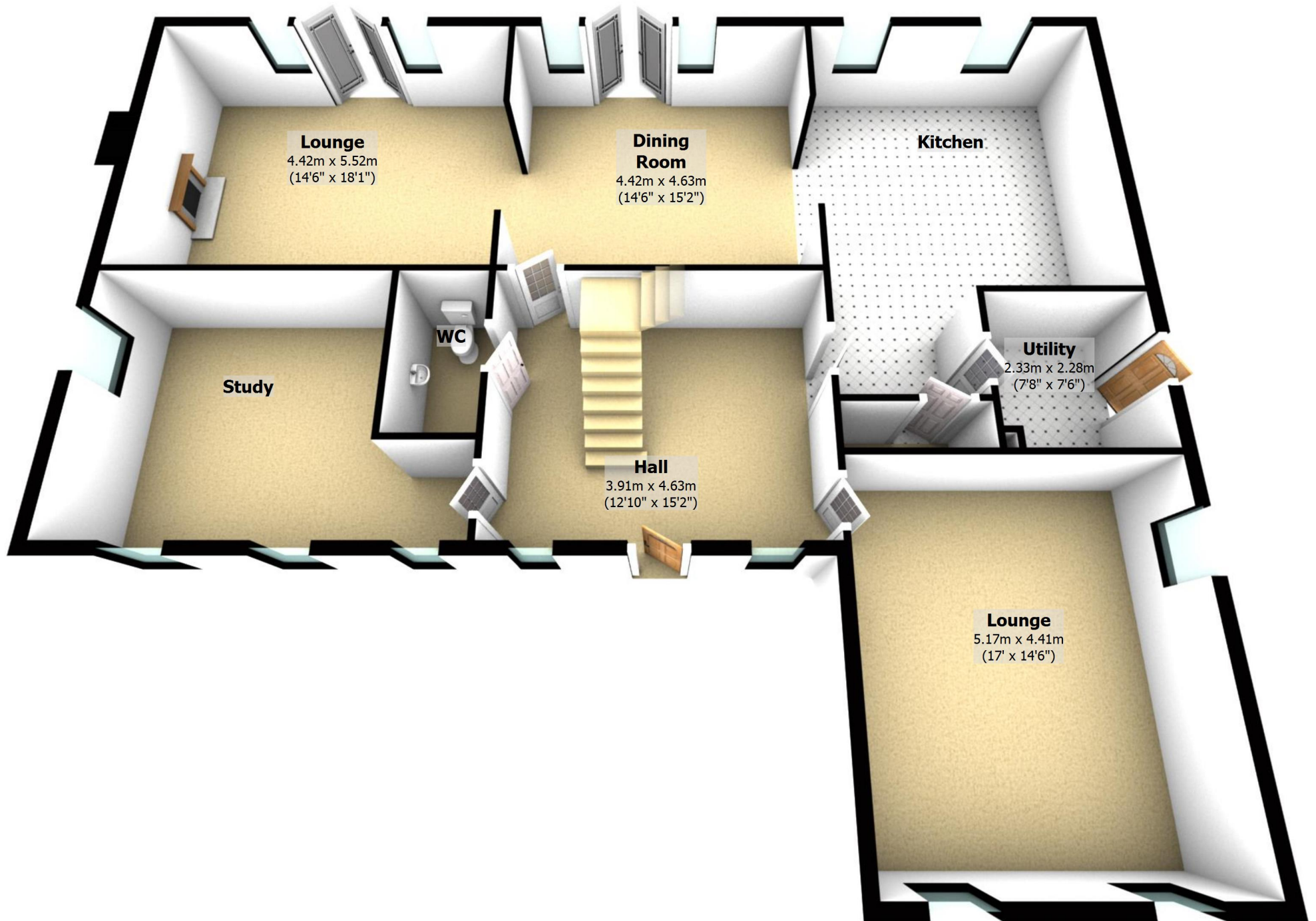
Second Floor

Approx. 55.0 sq. metres (592.1 sq. feet)



Ground Floor

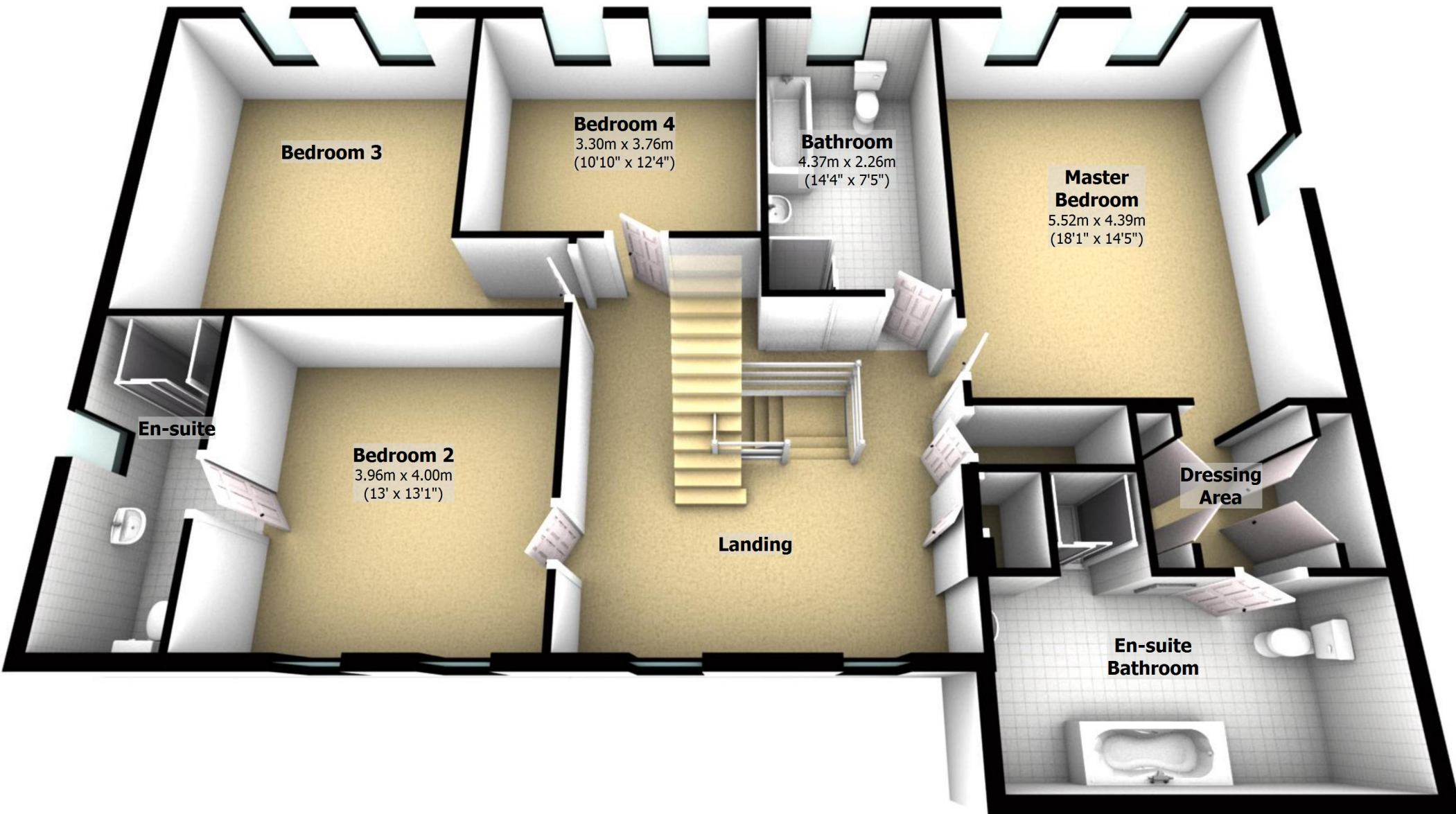
Approx. 142.2 sq. metres (1530.5 sq. feet)



Total area: approx. 328.4 sq. metres (3534.7 sq. feet)

First Floor

Approx. 131.2 sq. metres (1412.2 sq. feet)



Second Floor

Approx. 55.0 sq. metres (592.1 sq. feet)

