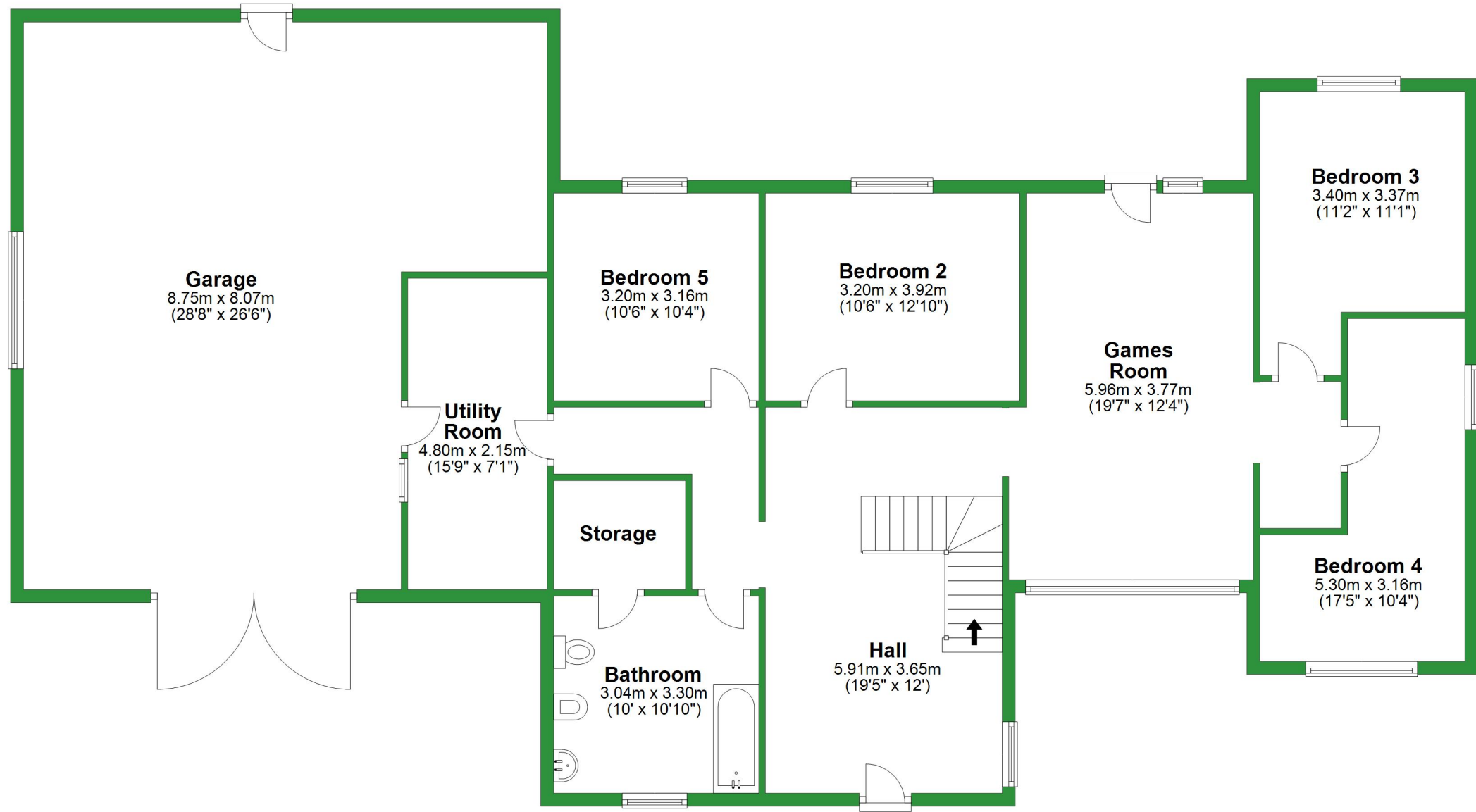


## Ground Floor

Approx. 186.9 sq. metres (2011.3 sq. feet)

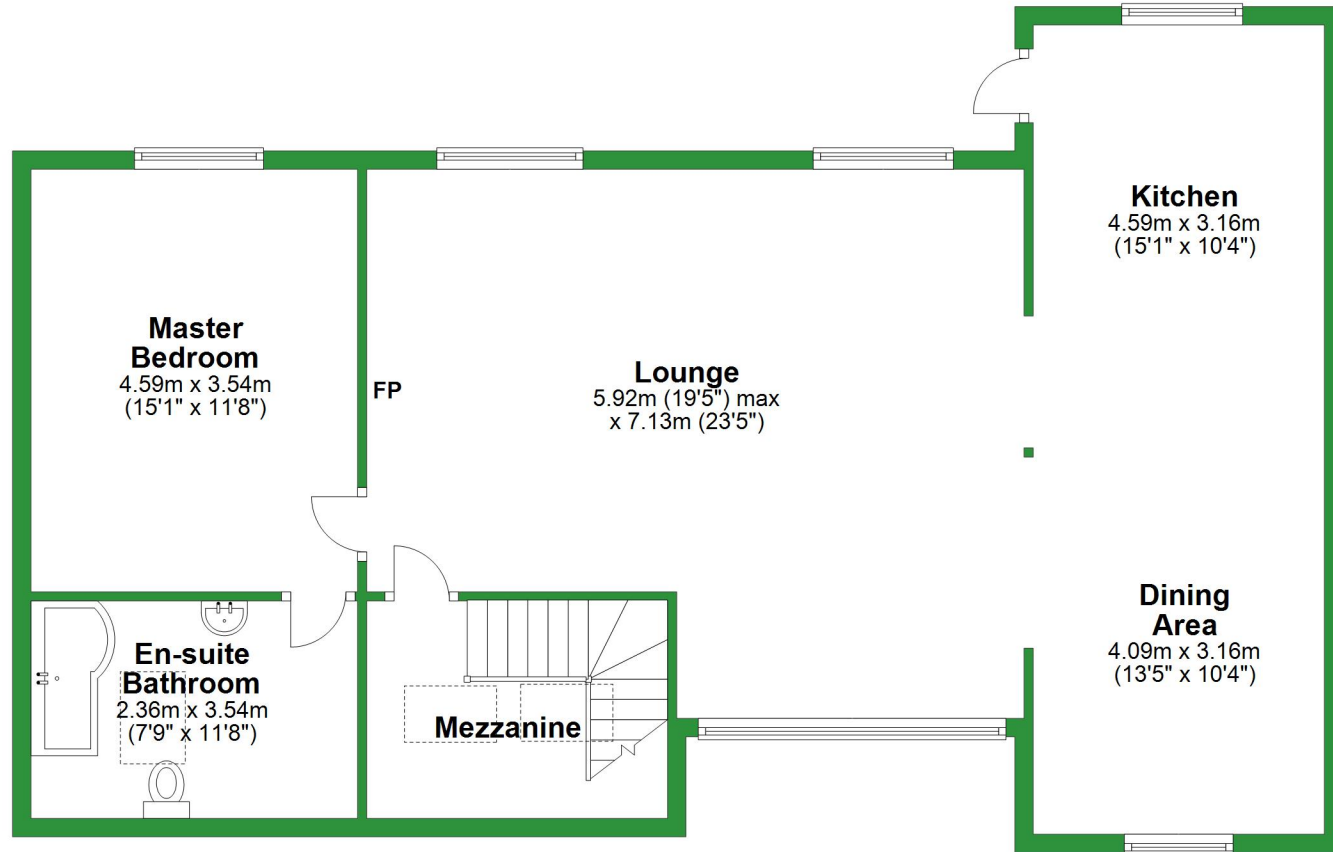


Total area: approx. 286.8 sq. metres (3087.4 sq. feet)

For illustrative purposes only. Not to scale. All sizes are approximate.  
Plan produced using PlanUp.

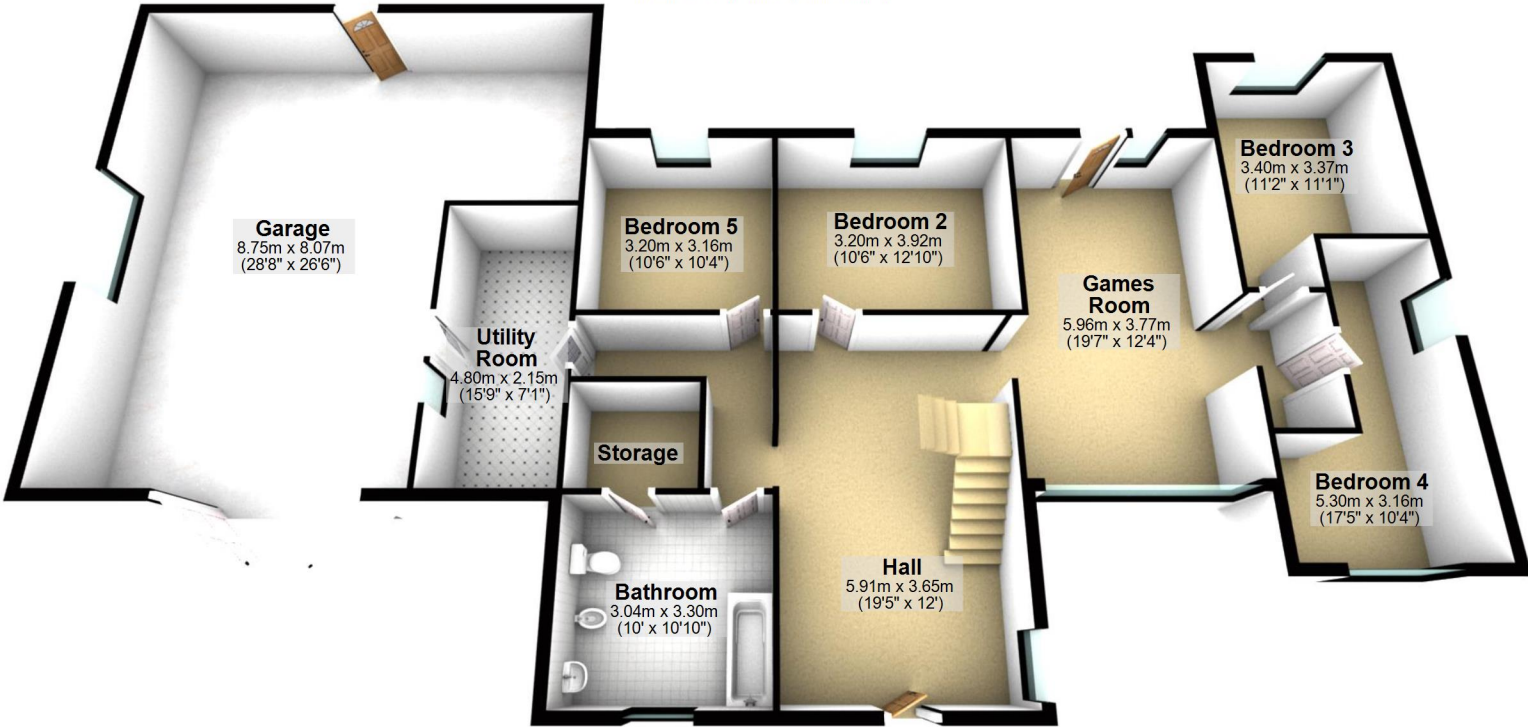
# First Floor

Approx. 100.0 sq. metres (1076.0 sq. feet)



## Ground Floor

Approx. 186.9 sq. metres (2011.3 sq. feet)

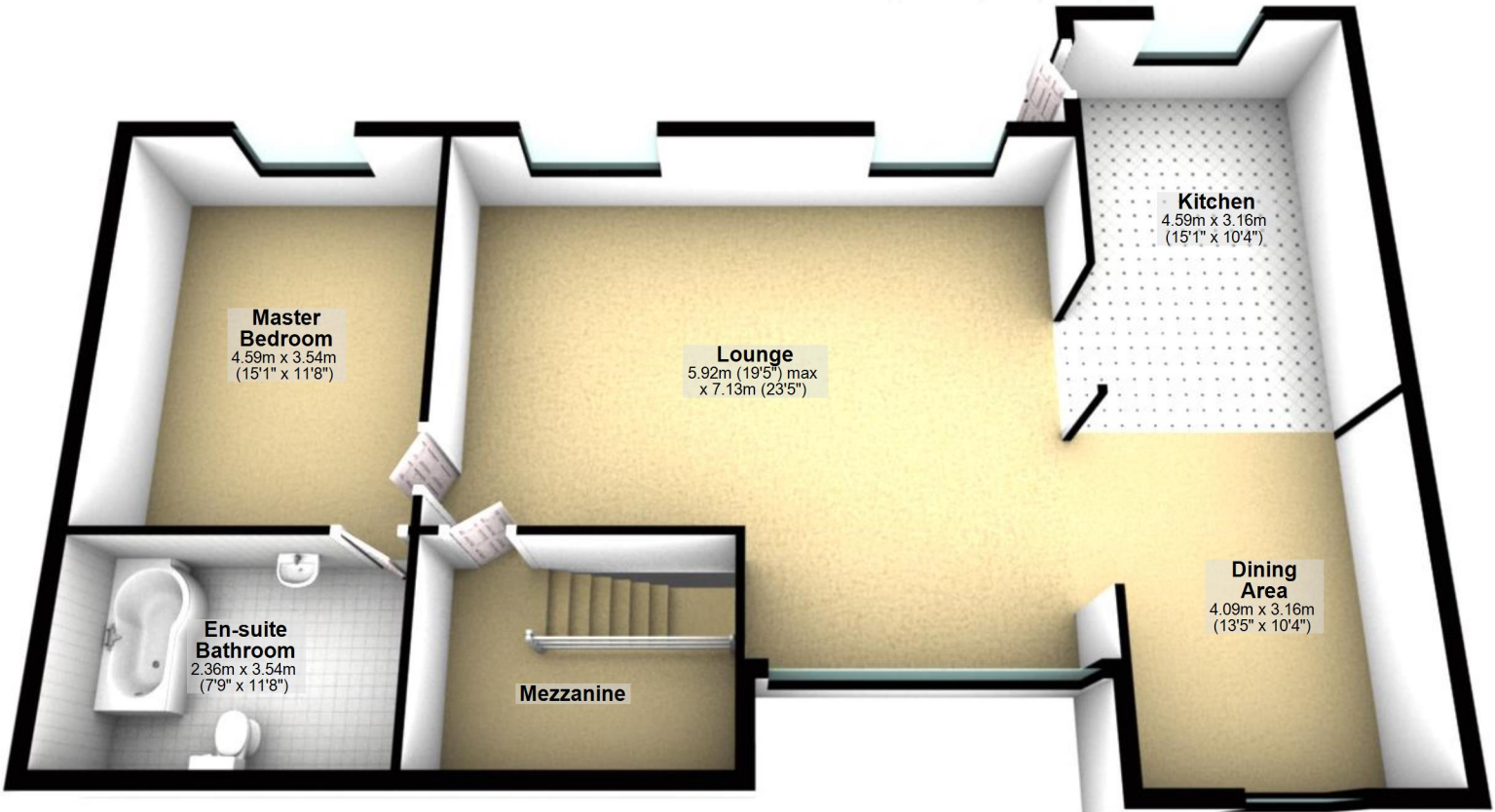


Total area: approx. 286.8 sq. metres (3087.4 sq. feet)

For illustrative purposes only. Not to scale. All sizes are approximate.  
Plan produced using PlanUp.

## First Floor

Approx. 100.0 sq. metres (1076.0 sq. feet)



**Master Bedroom**  
4.59m x 3.54m  
(15'1" x 11'8")

**Lounge**  
5.92m (19'5") max  
x 7.13m (23'5")

**Kitchen**  
4.59m x 3.16m  
(15'1" x 10'4")

**Dining Area**  
4.09m x 3.16m  
(13'5" x 10'4")

**En-suite Bathroom**  
2.36m x 3.54m  
(7'9" x 11'8")

**Mezzanine**