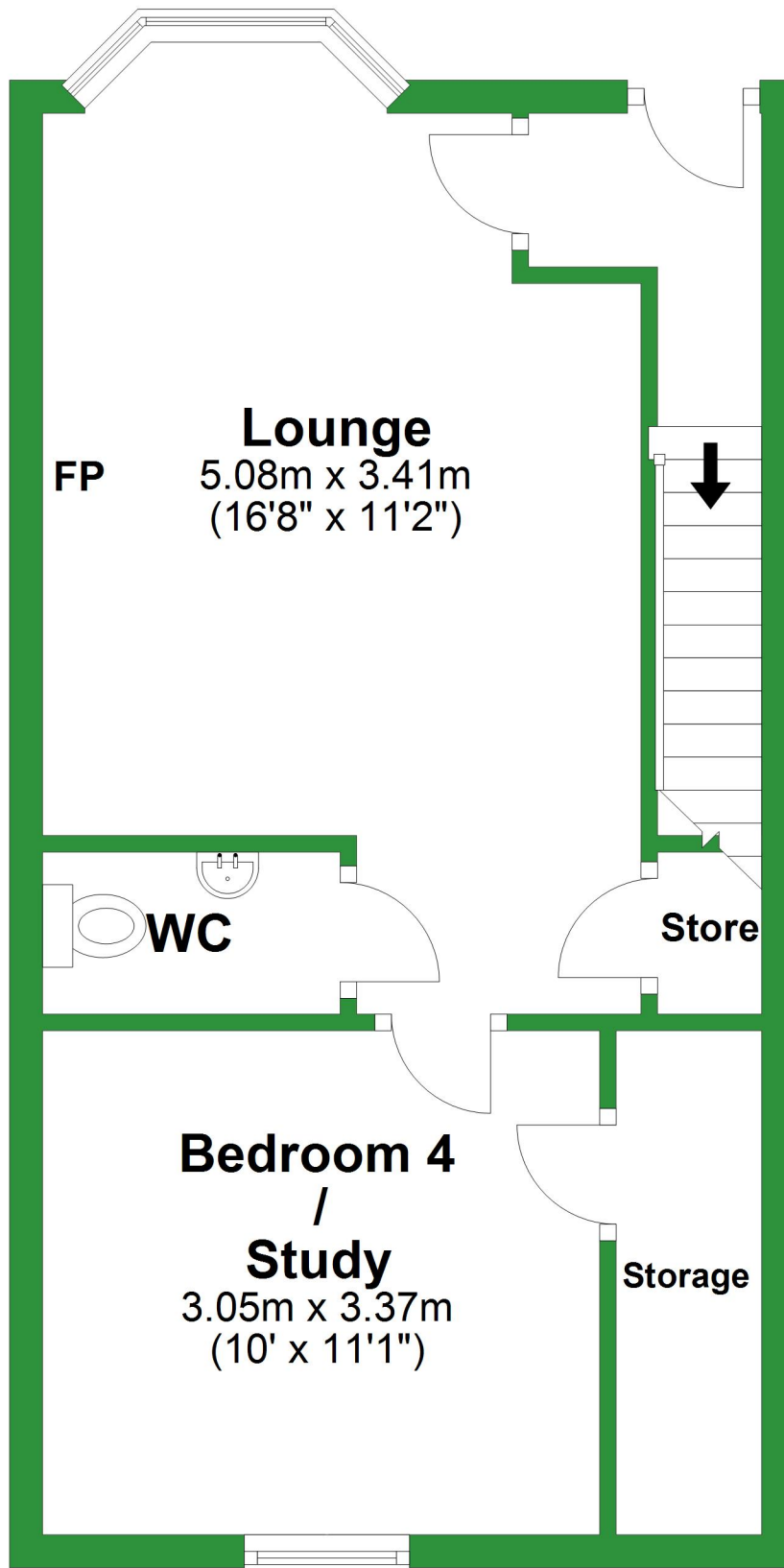


Basement

Approx. 37.6 sq. metres (405.1 sq. feet)



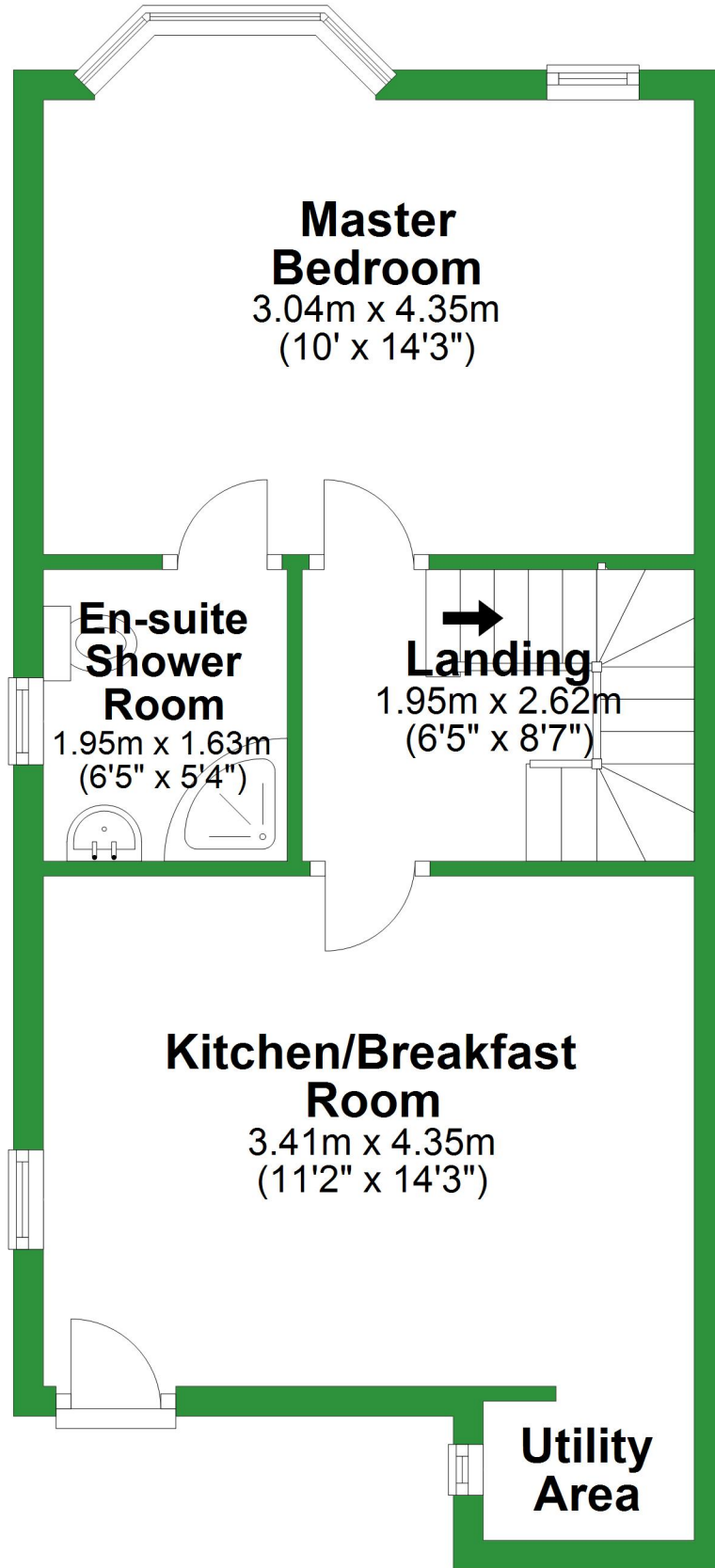
Total area: approx. 112.5 sq. metres (1210.7 sq. feet)

For illustrative purposes only. Not to scale. All sizes are approximate.

Plan produced using PlanUp.

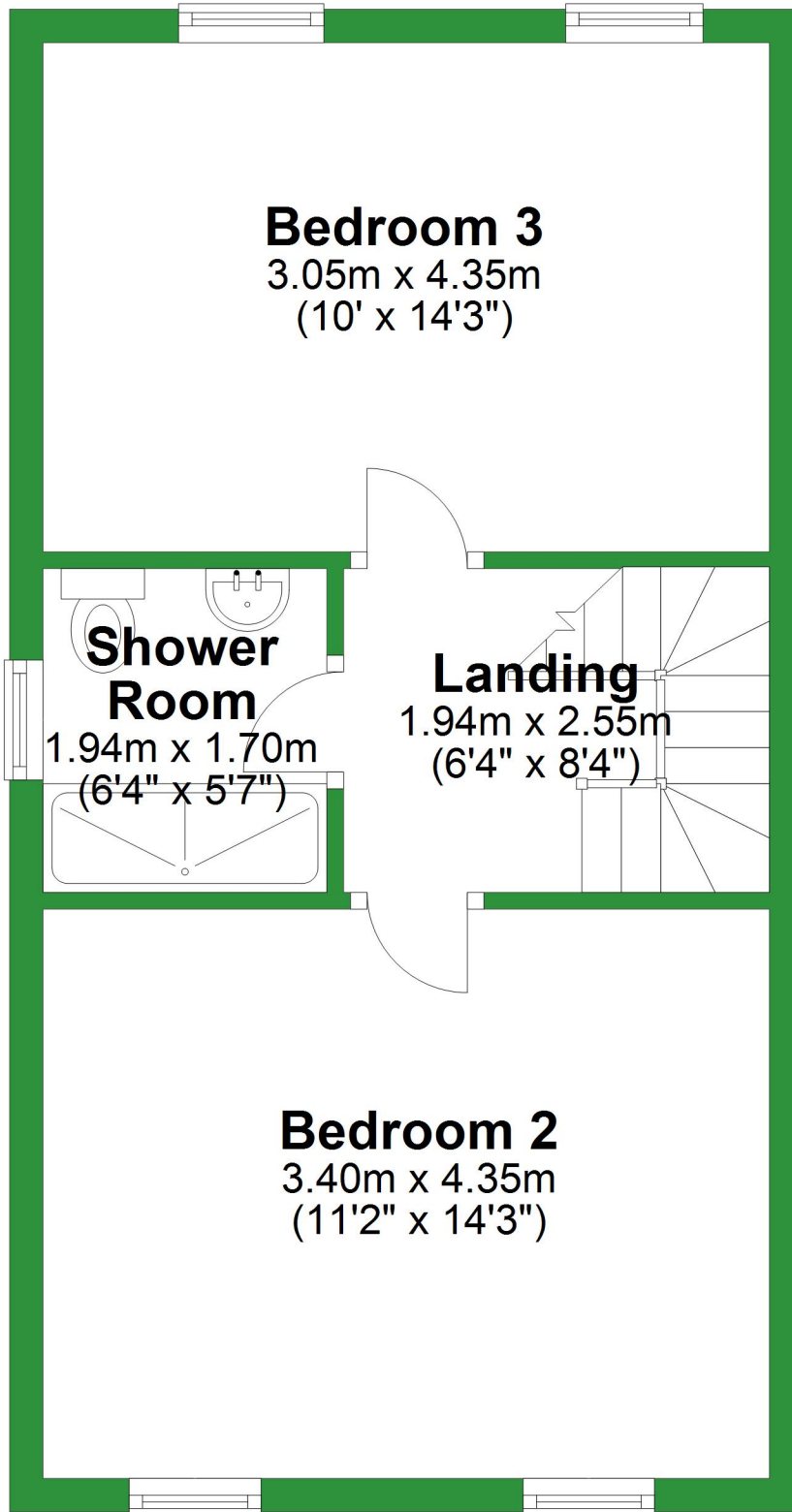
Ground Floor

Approx. 39.1 sq. metres (420.8 sq. feet)



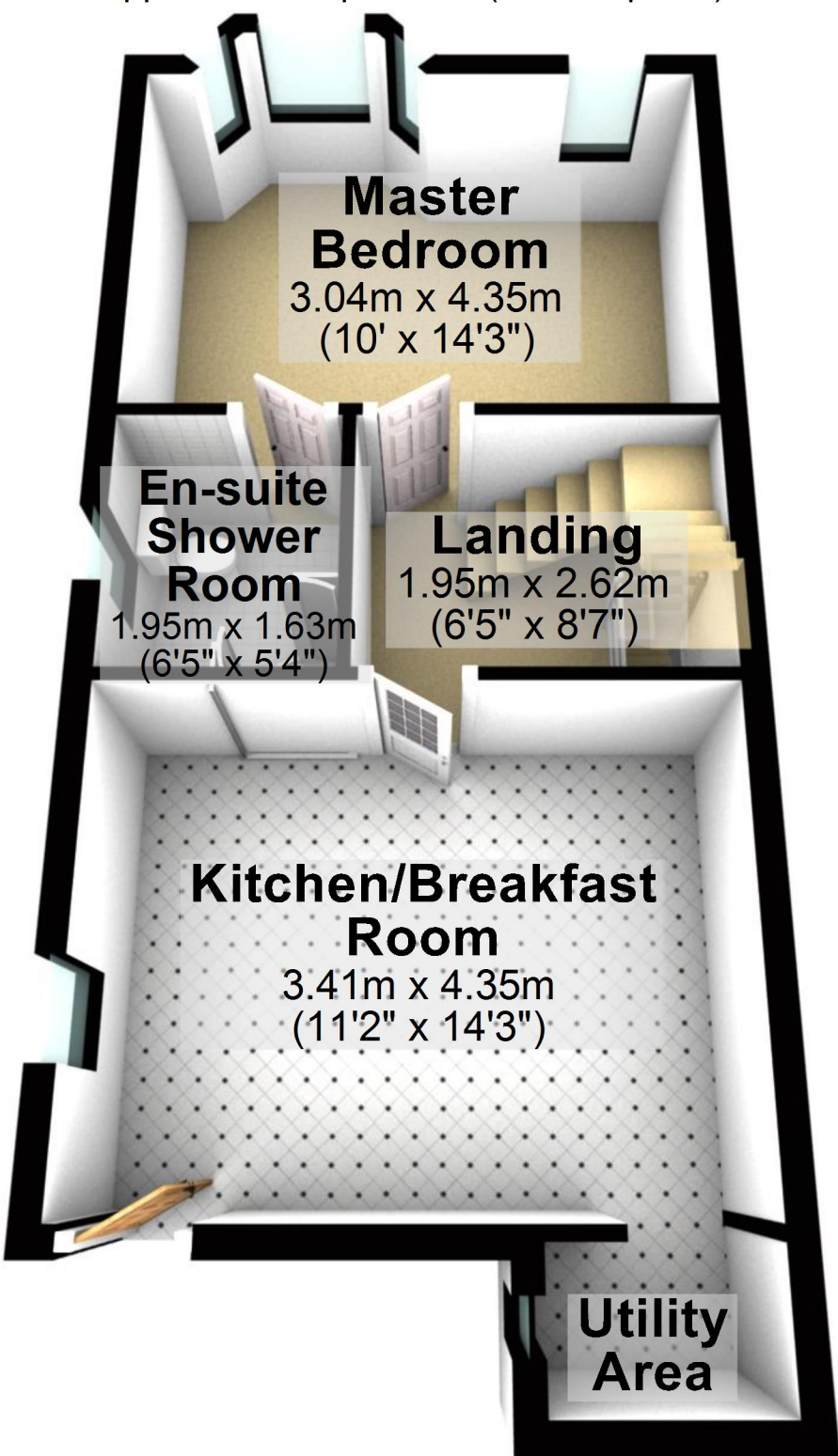
First Floor

Approx. 35.8 sq. metres (384.9 sq. feet)



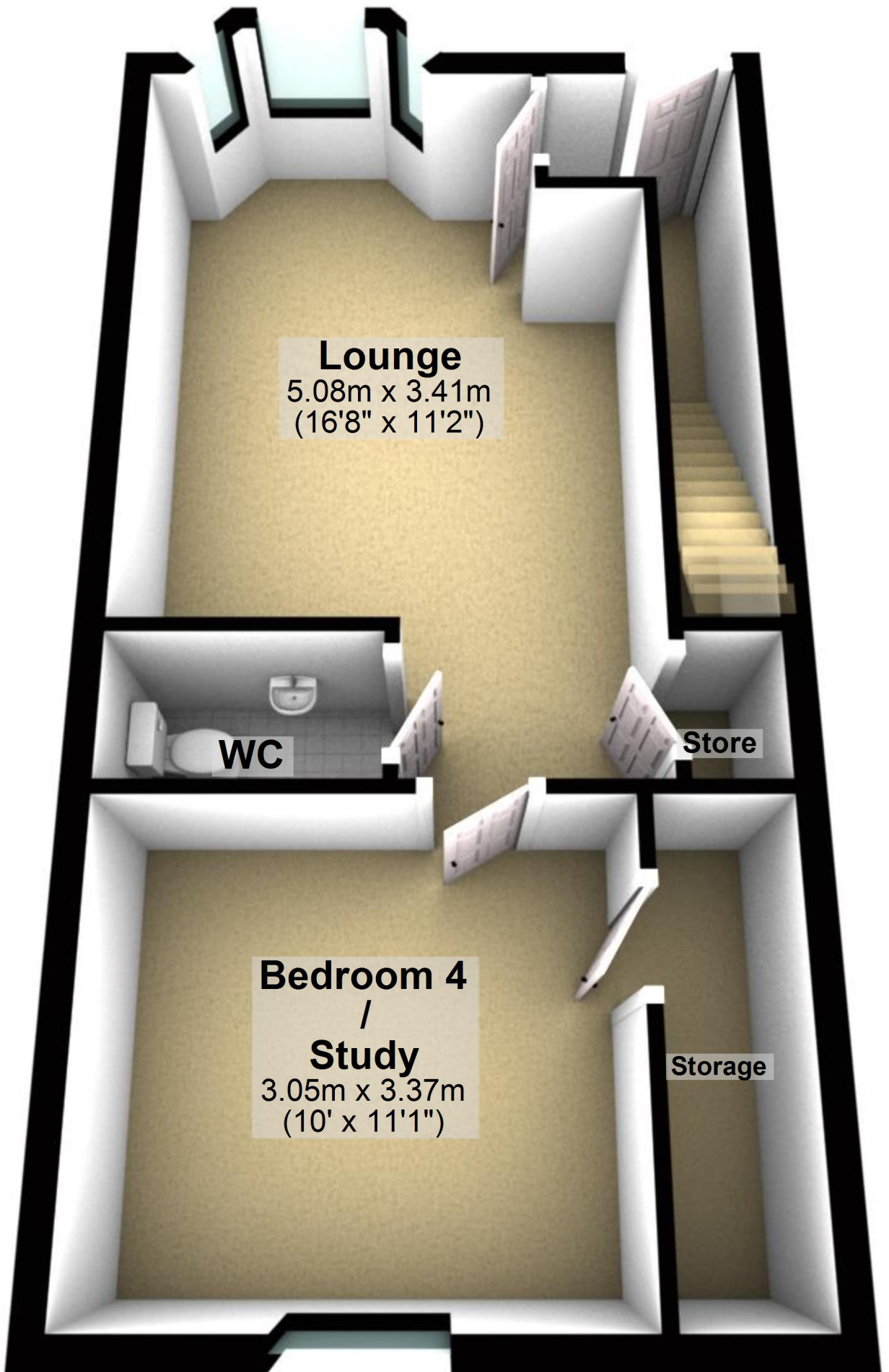
Ground Floor

Approx. 39.1 sq. metres (420.8 sq. feet)



Basement

Approx. 37.6 sq. metres (405.1 sq. feet)



Lounge
5.08m x 3.41m
(16'8" x 11'2")

WC

Store

**Bedroom 4
/
Study**
3.05m x 3.37m
(10' x 11'1")

Storage

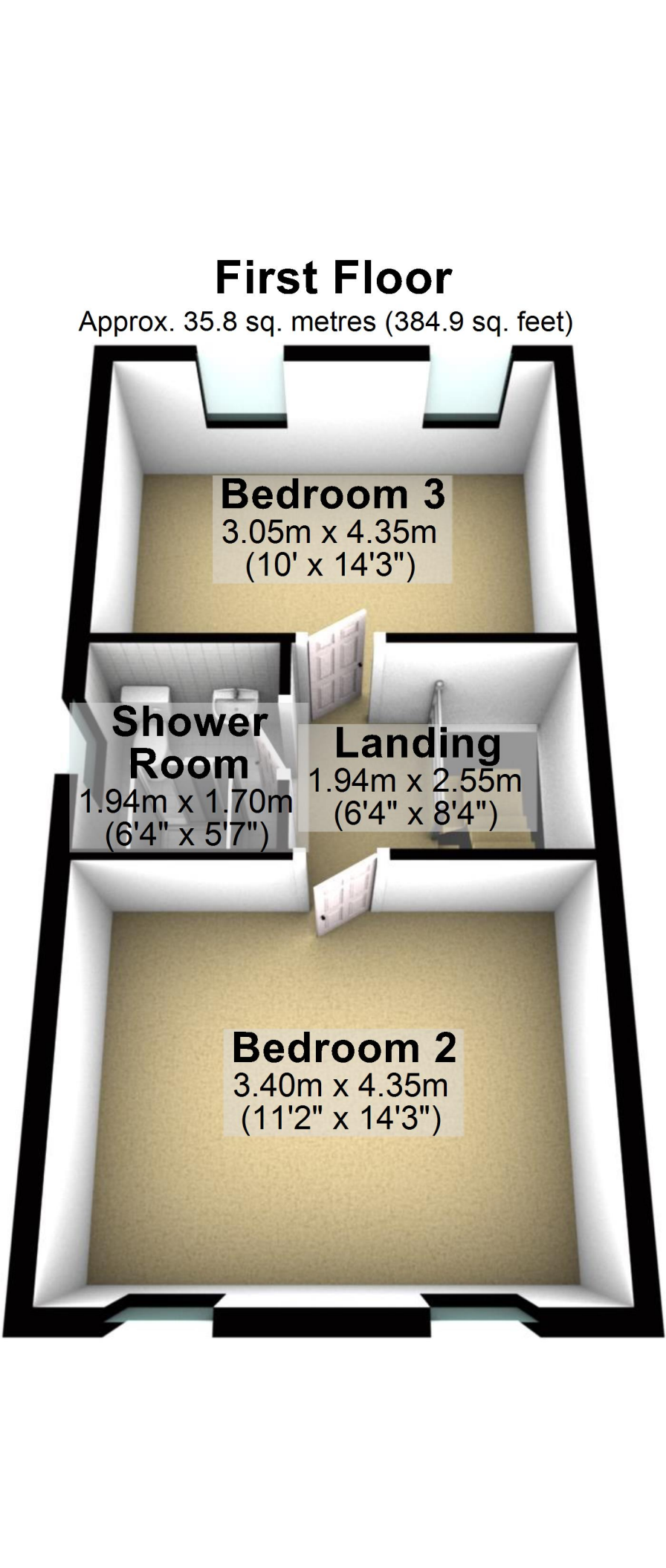
Total area: approx. 112.5 sq. metres (1210.7 sq. feet)

For illustrative purposes only. Not to scale. All sizes are approximate.

Plan produced using PlanUp.

First Floor

Approx. 35.8 sq. metres (384.9 sq. feet)



Bedroom 3
3.05m x 4.35m
(10' x 14'3")

Shower Room
1.94m x 1.70m
(6'4" x 5'7")

Landing
1.94m x 2.55m
(6'4" x 8'4")

Bedroom 2
3.40m x 4.35m
(11'2" x 14'3")