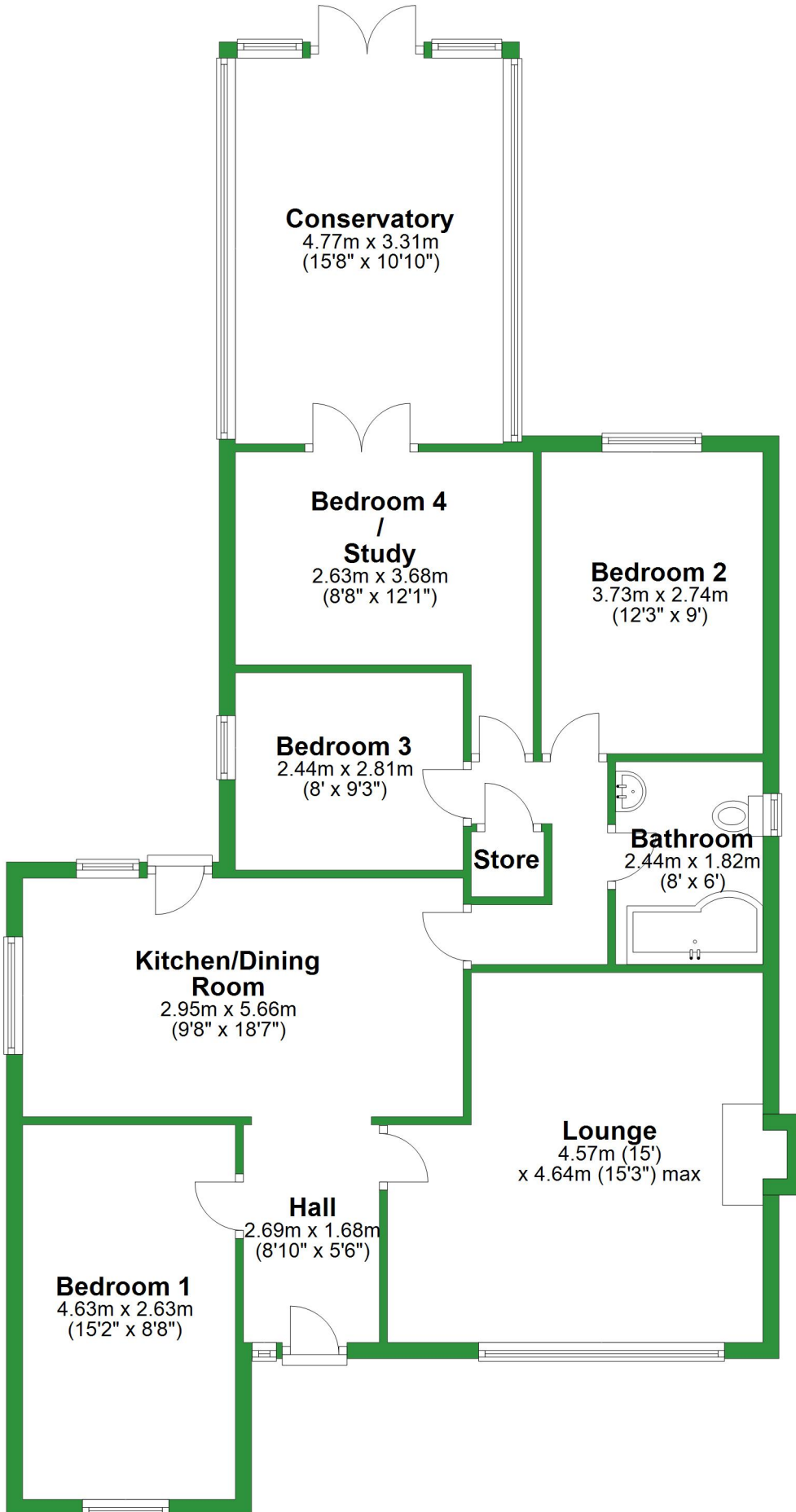


# Ground Floor

Approx. 108.0 sq. metres (1162.2 sq. feet)

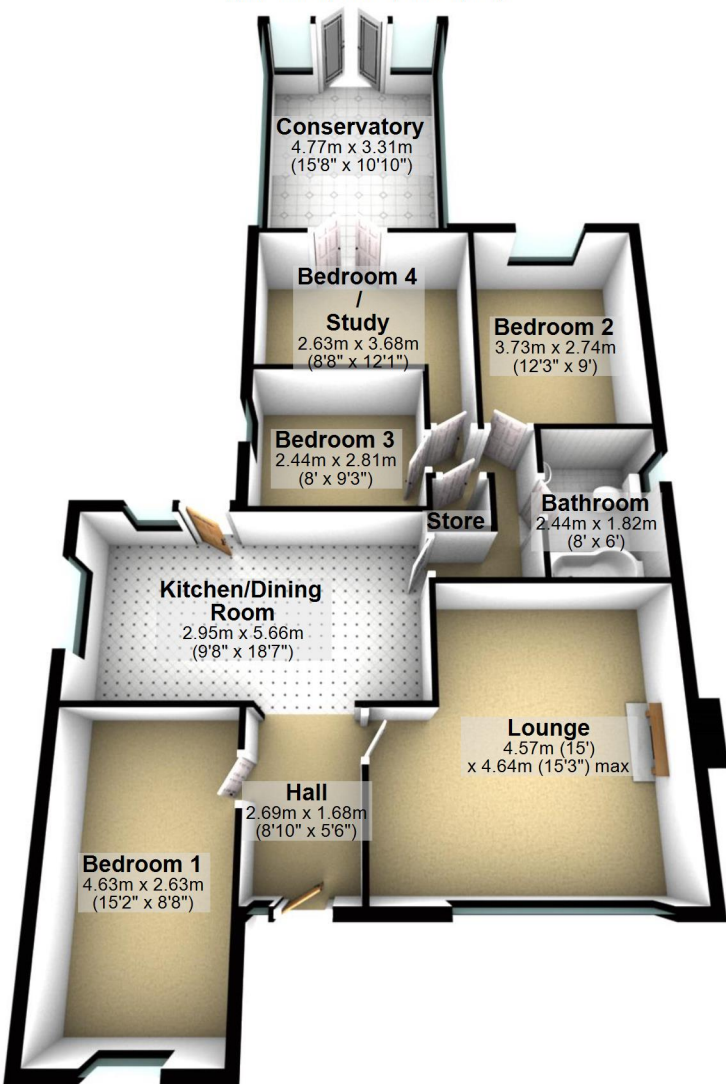


Total area: approx. 108.0 sq. metres (1162.2 sq. feet)

For illustrative purposes only. Not to scale. All sizes are approximate.  
Plan produced using PlanUp.

## Ground Floor

Approx. 108.0 sq. metres (1162.2 sq. feet)



Total area: approx. 108.0 sq. metres (1162.2 sq. feet)

For illustrative purposes only. Not to scale. All sizes are approximate.

Plan produced using PlanUp.