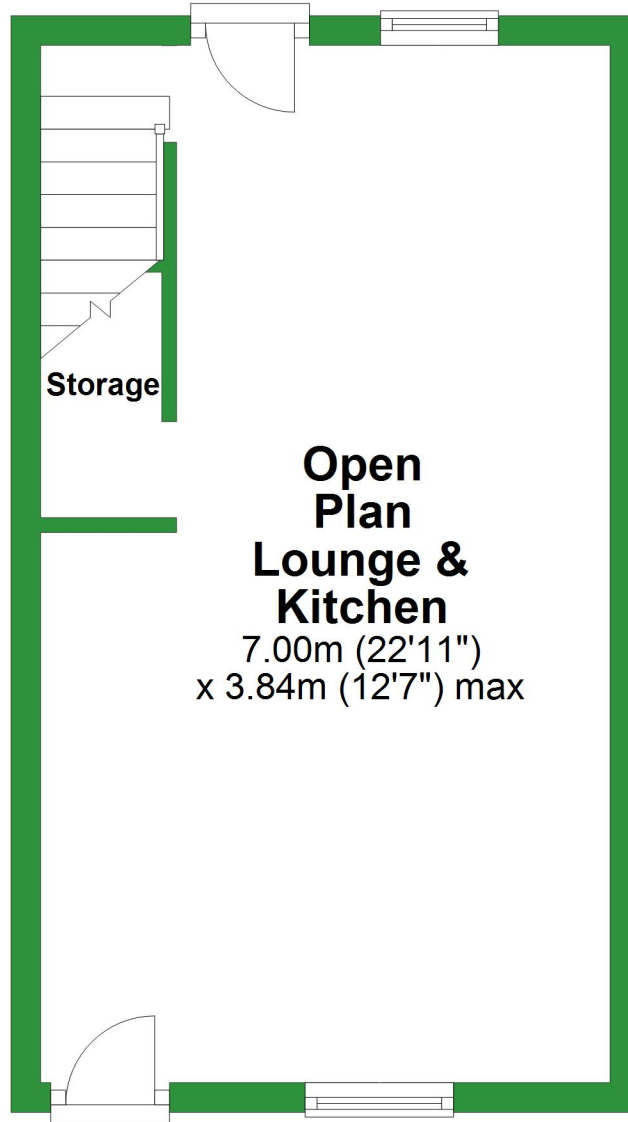


# Ground Floor

Approx. 26.9 sq. metres (289.1 sq. feet)

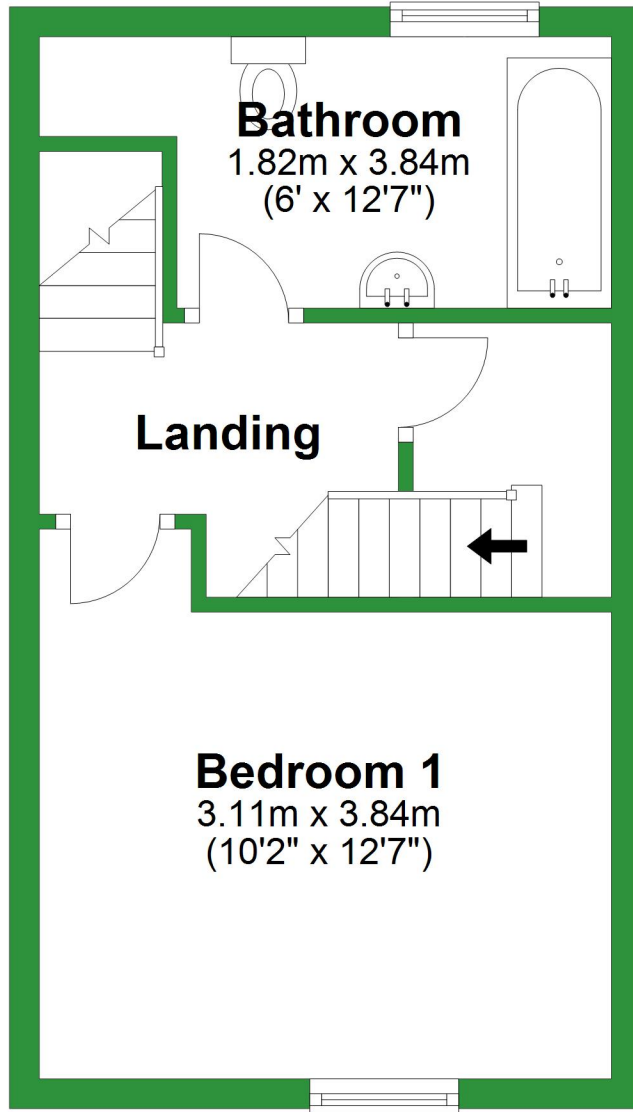


Total area: approx. 70.5 sq. metres (759.1 sq. feet)

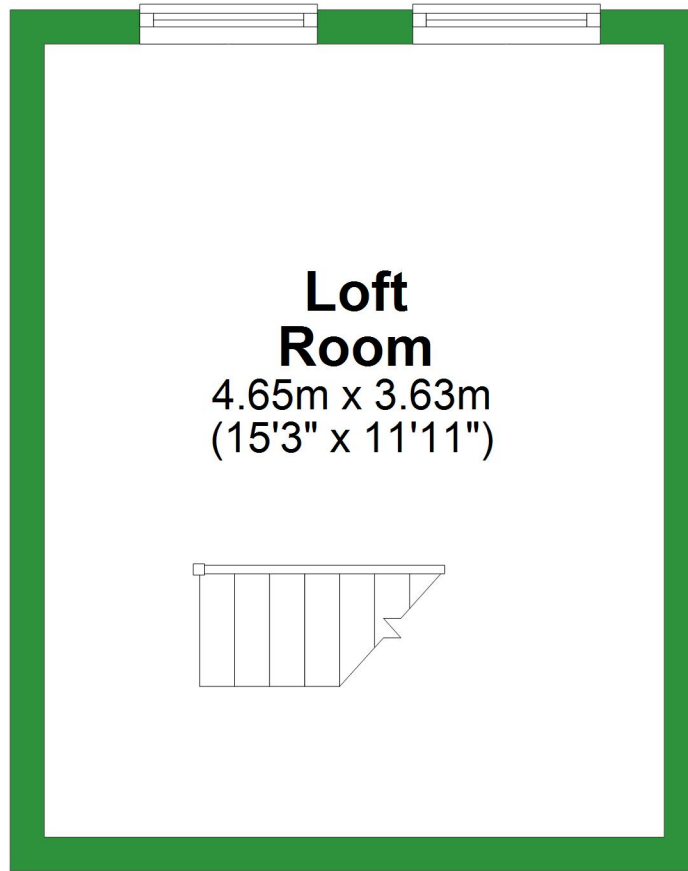
For illustrative purposes only. Not to scale. All sizes are approximate.  
Plan produced using PlanUp.

# First Floor

Approx. 26.8 sq. metres (288.3 sq. feet)

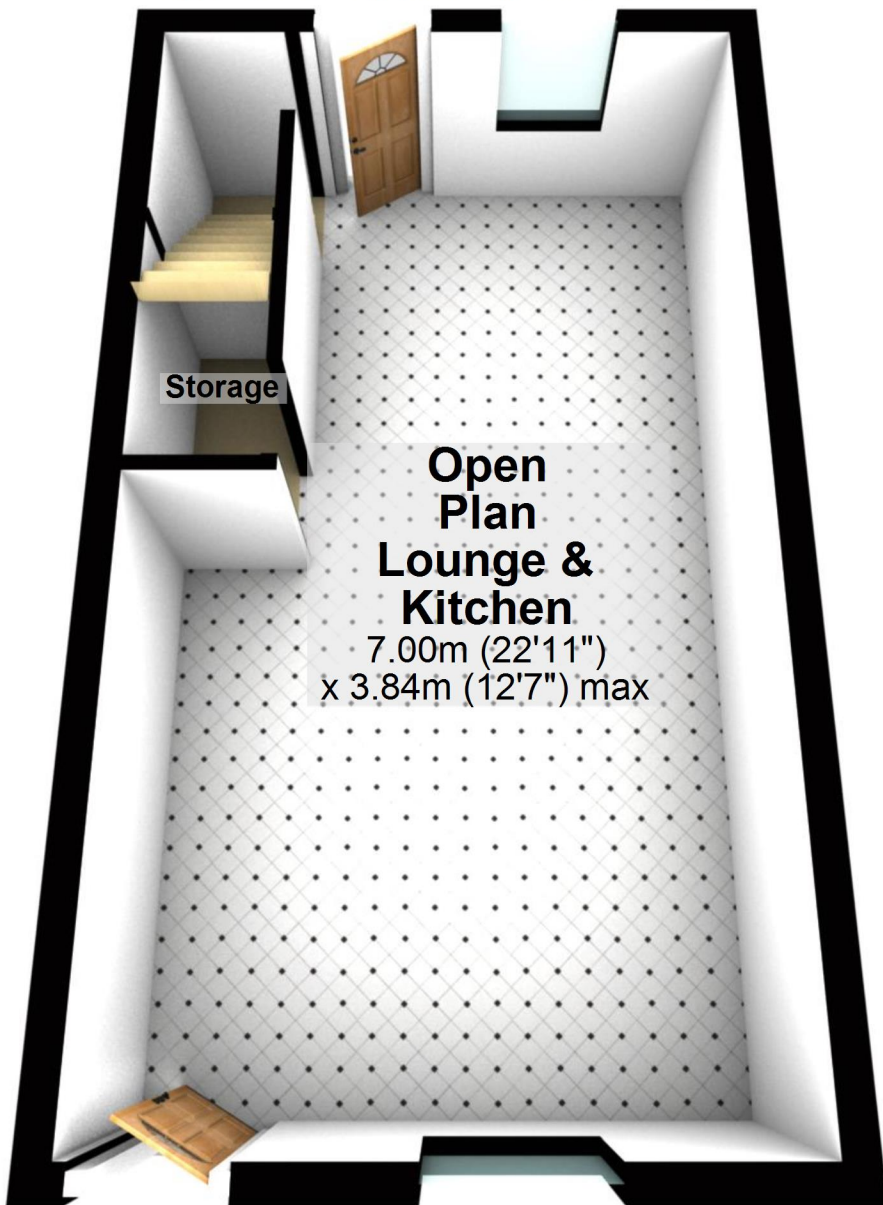


Approx. 16.9 sq. metres (181.7 sq. feet)



# Ground Floor

Approx. 26.9 sq. metres (289.1 sq. feet)



Storage

**Open  
Plan  
Lounge &  
Kitchen**

7.00m (22'11")  
x 3.84m (12'7") max

**Total area: approx. 70.5 sq. metres (759.1 sq. feet)**

For illustrative purposes only. Not to scale. All sizes are approximate.

Plan produced using PlanUp.

# First Floor

Approx. 26.8 sq. metres (288.3 sq. feet)

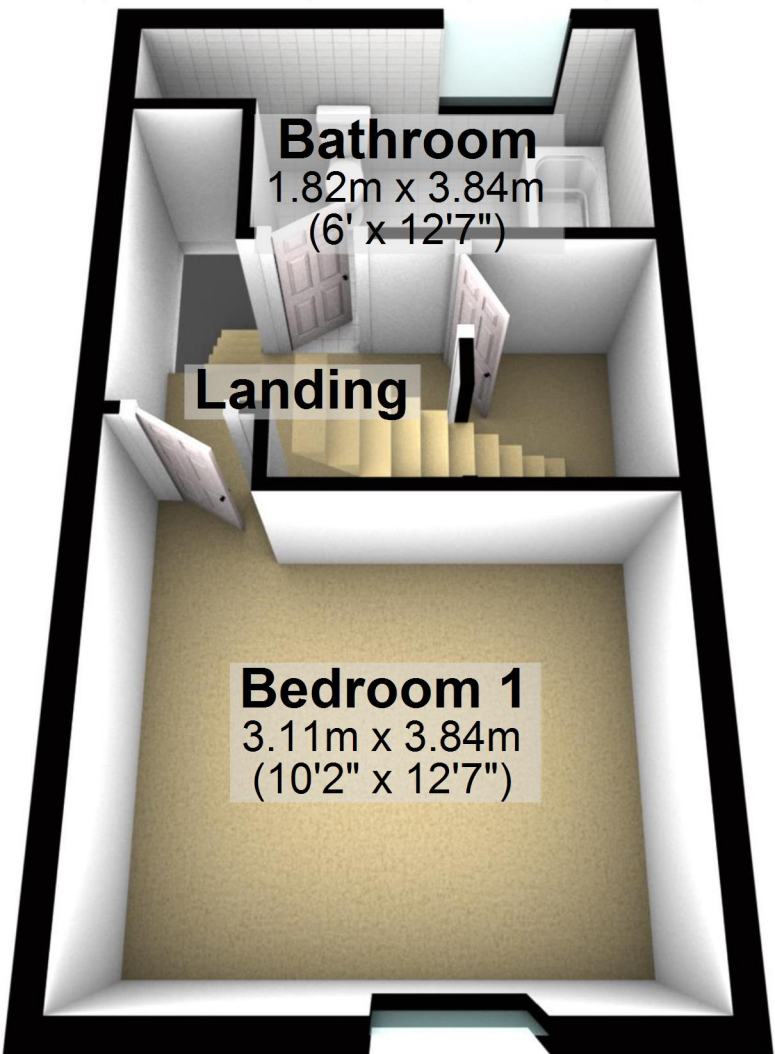
## Bathroom

1.82m x 3.84m  
(6' x 12'7")

## Landing

## Bedroom 1

3.11m x 3.84m  
(10'2" x 12'7")



# Second Floor

Approx. 16.9 sq. metres (181.7 sq. feet)

## Loft Room

4.65m x 3.63m  
(15'3" x 11'11")

