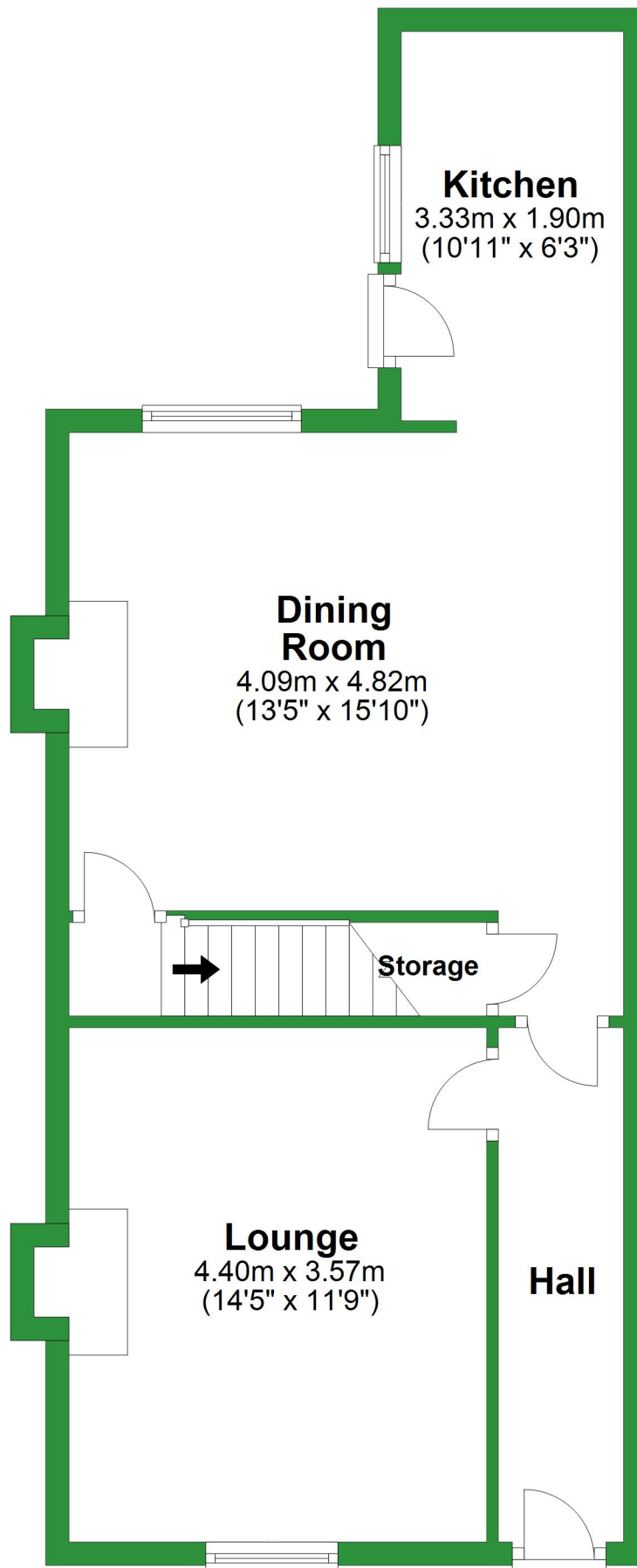


# Ground Floor

Approx. 51.5 sq. metres (554.3 sq. feet)

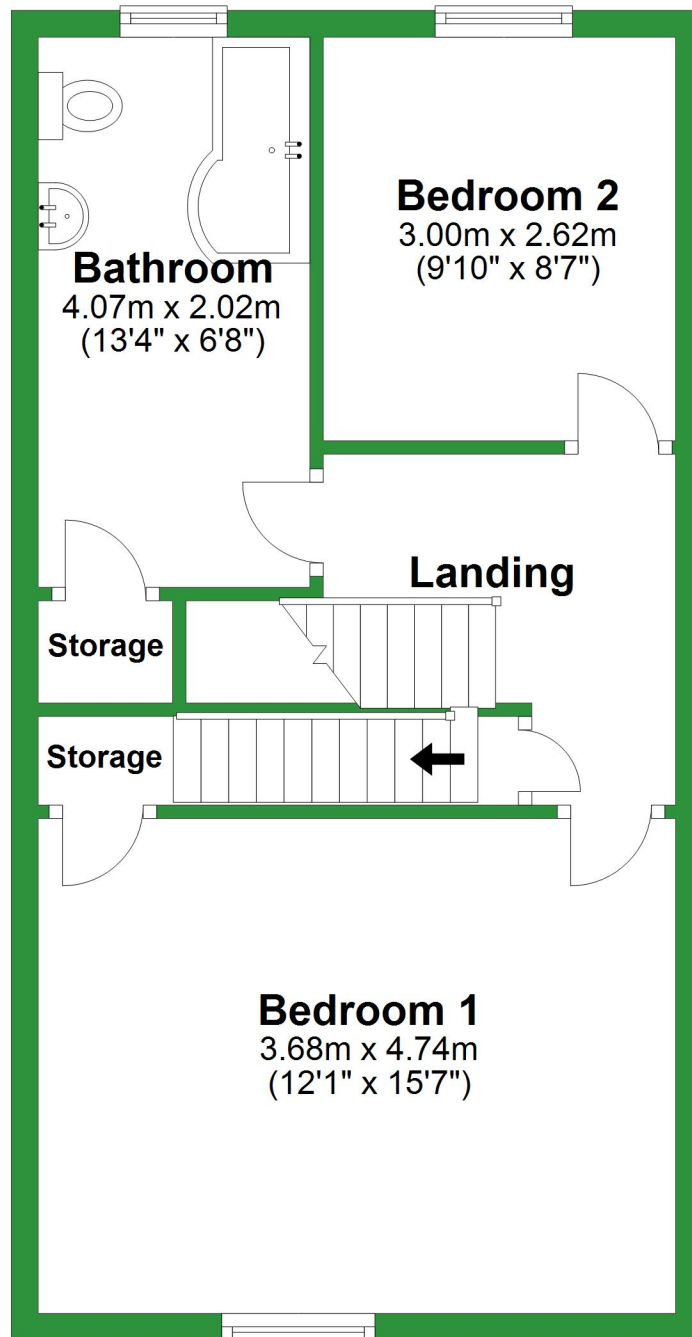


Total area: approx. 130.5 sq. metres (1404.2 sq. feet)

For illustrative purposes only. Not to scale. All sizes are approximate.  
Plan produced using PlanUp.

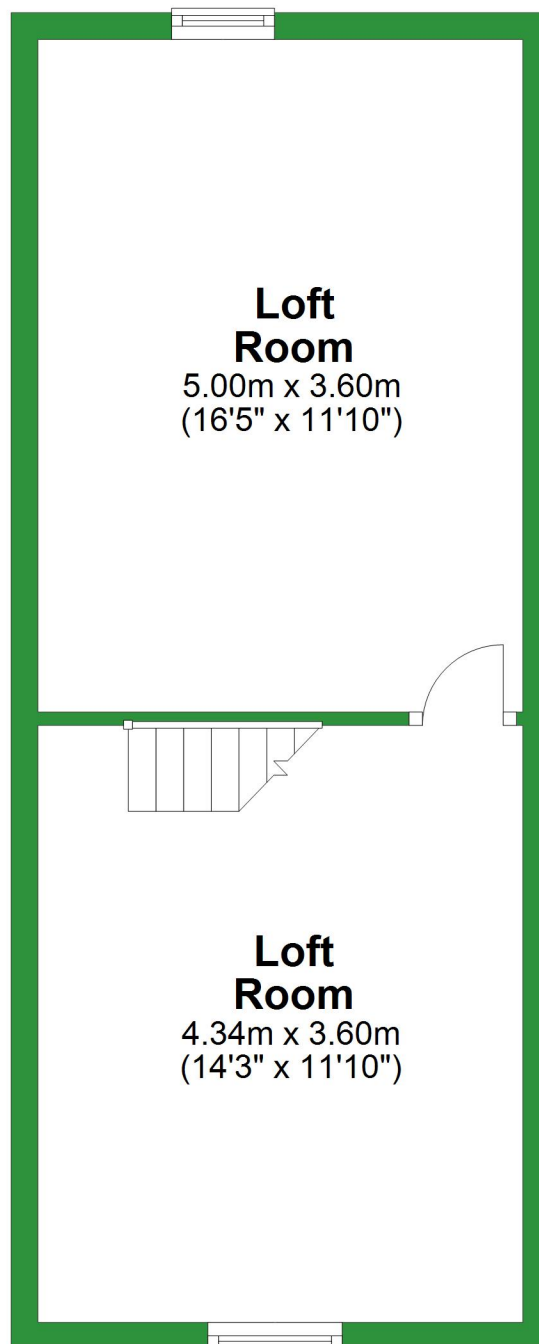
## First Floor

Approx. 44.9 sq. metres (483.8 sq. feet)



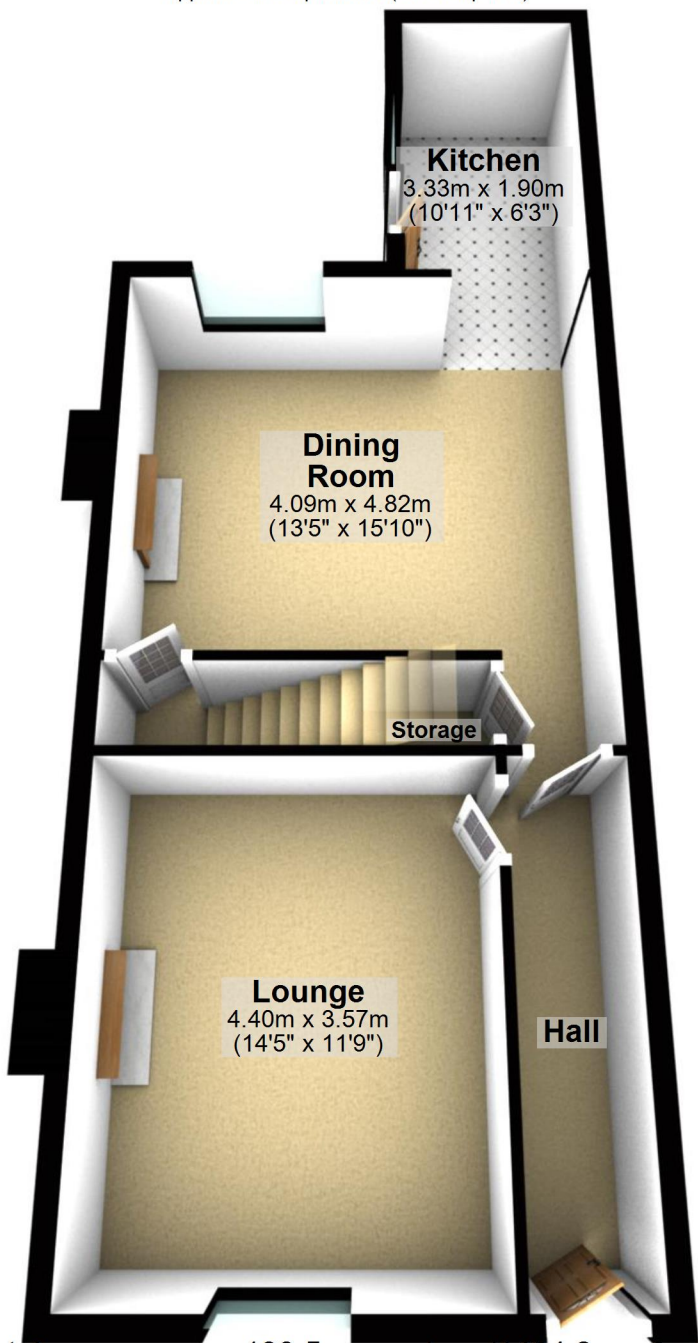
## Second Floor

Approx. 34.0 sq. metres (366.1 sq. feet)



# Ground Floor

Approx. 51.5 sq. metres (554.3 sq. feet)



## Kitchen

3.33m x 1.90m  
(10'11" x 6'3")

## Dining Room

4.09m x 4.82m  
(13'5" x 15'10")

Storage

## Lounge

4.40m x 3.57m  
(14'5" x 11'9")

Hall

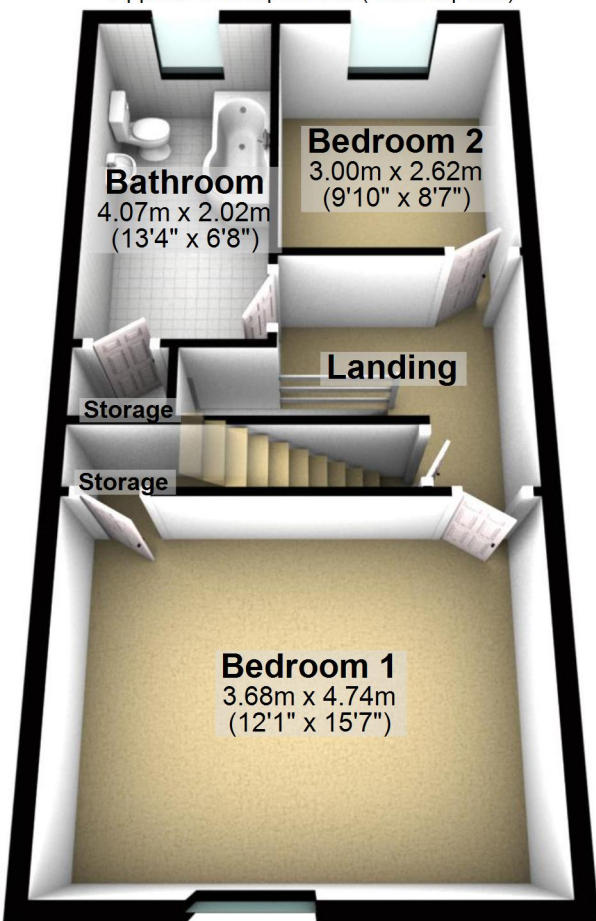
Total area: approx. 130.5 sq. metres (1404.2 sq. feet)

For illustrative purposes only. Not to scale. All sizes are approximate.

Plan produced using PlanUp.

# First Floor

Approx. 44.9 sq. metres (483.8 sq. feet)



## Second Floor

Approx. 34.0 sq. metres (366.1 sq. feet)

### Loft Room

5.00m x 3.60m  
(16'5" x 11'10")

### Loft Room

4.34m x 3.60m  
(14'3" x 11'10")

