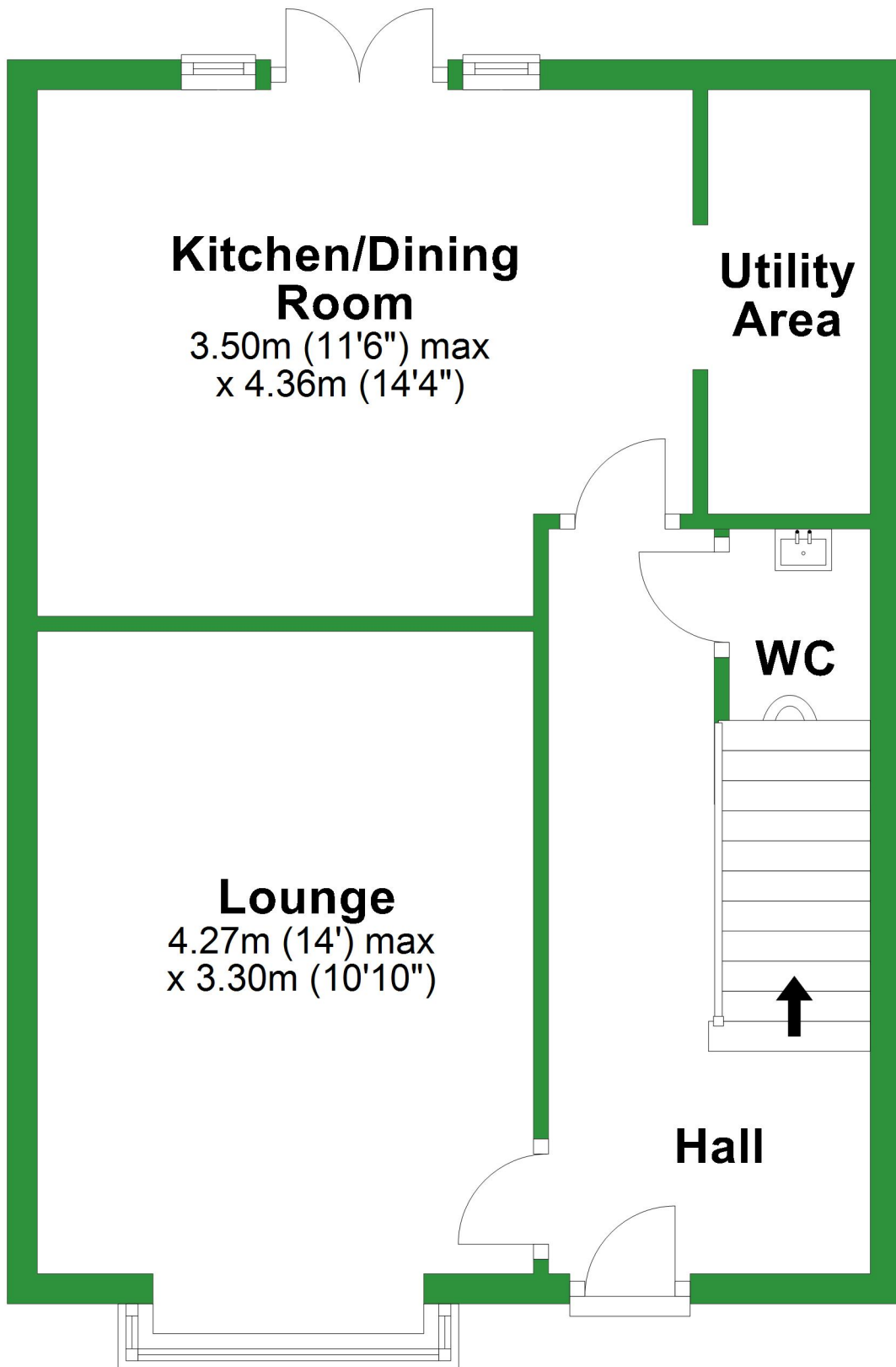


# Ground Floor

Approx. 44.0 sq. metres (473.2 sq. feet)



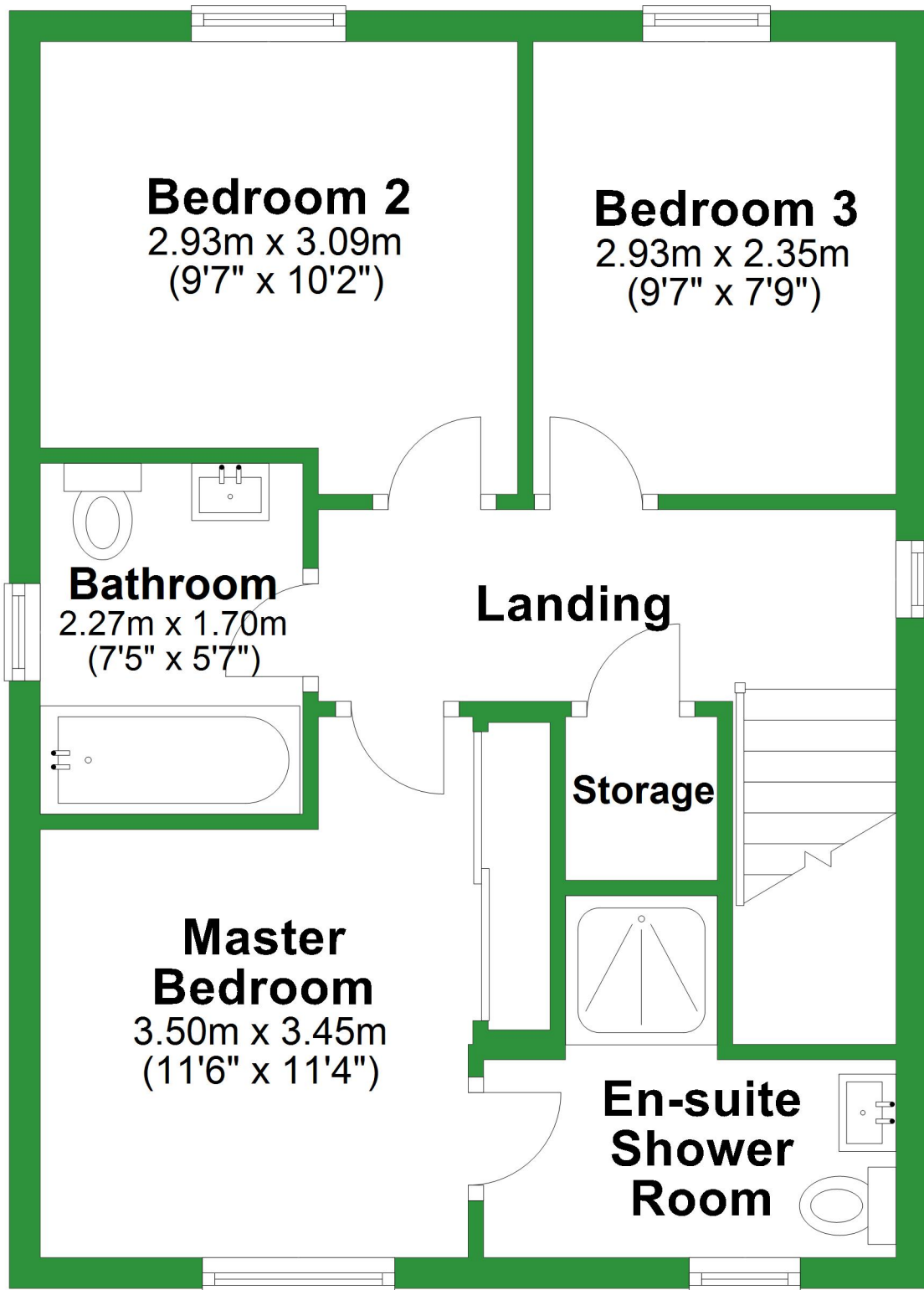
Total area: approx. 87.6 sq. metres (942.5 sq. feet)

For illustrative purposes only. Not to scale. All sizes are approximate.

Plan produced using PlanUp.

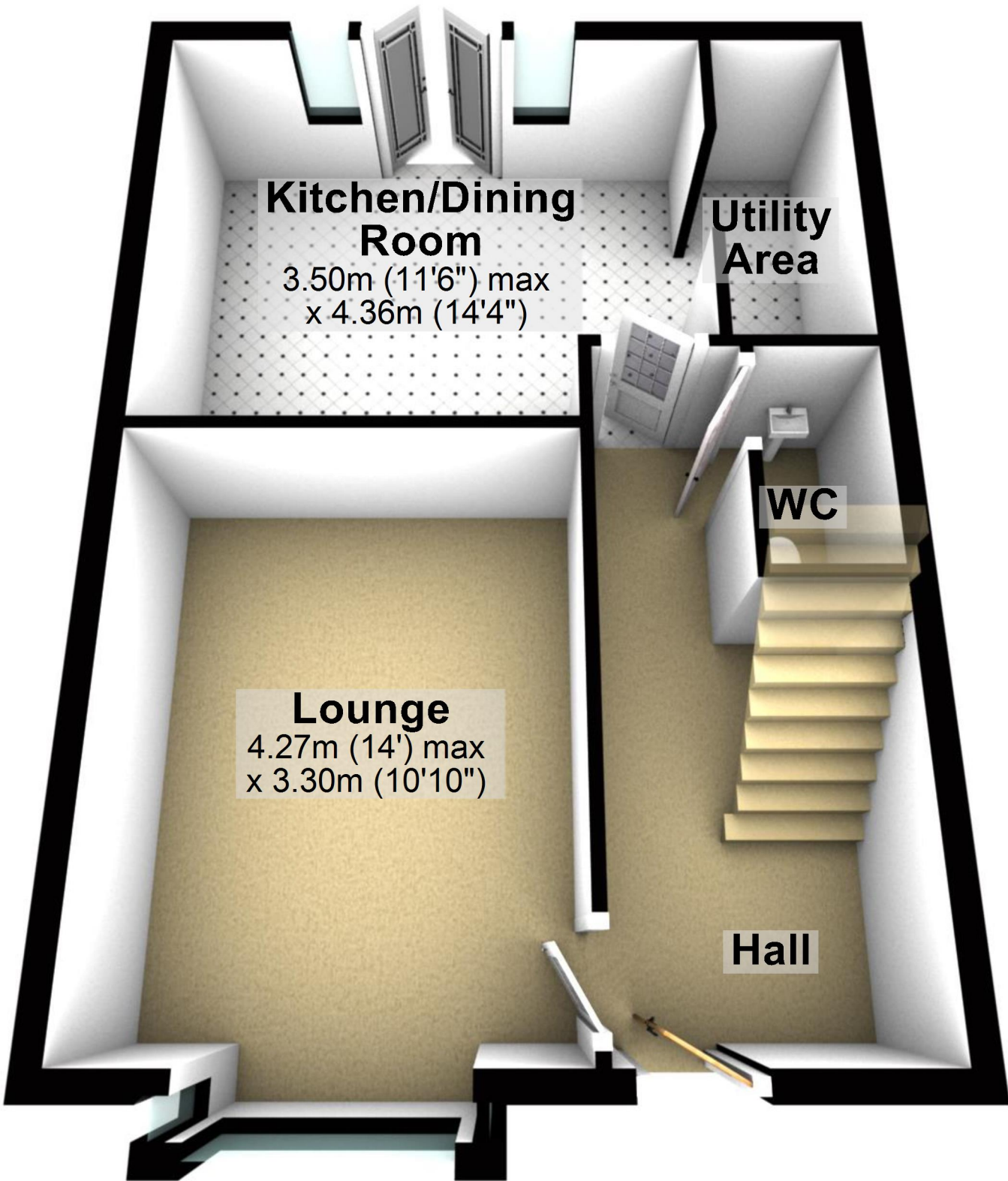
# First Floor

Approx. 43.6 sq. metres (469.3 sq. feet)



# Ground Floor

Approx. 44.0 sq. metres (473.2 sq. feet)



Total area: approx. 87.6 sq. metres (942.5 sq. feet)

For illustrative purposes only. Not to scale. All sizes are approximate.

Plan produced using PlanUp.

# First Floor

Approx. 43.6 sq. metres (469.3 sq. feet)

