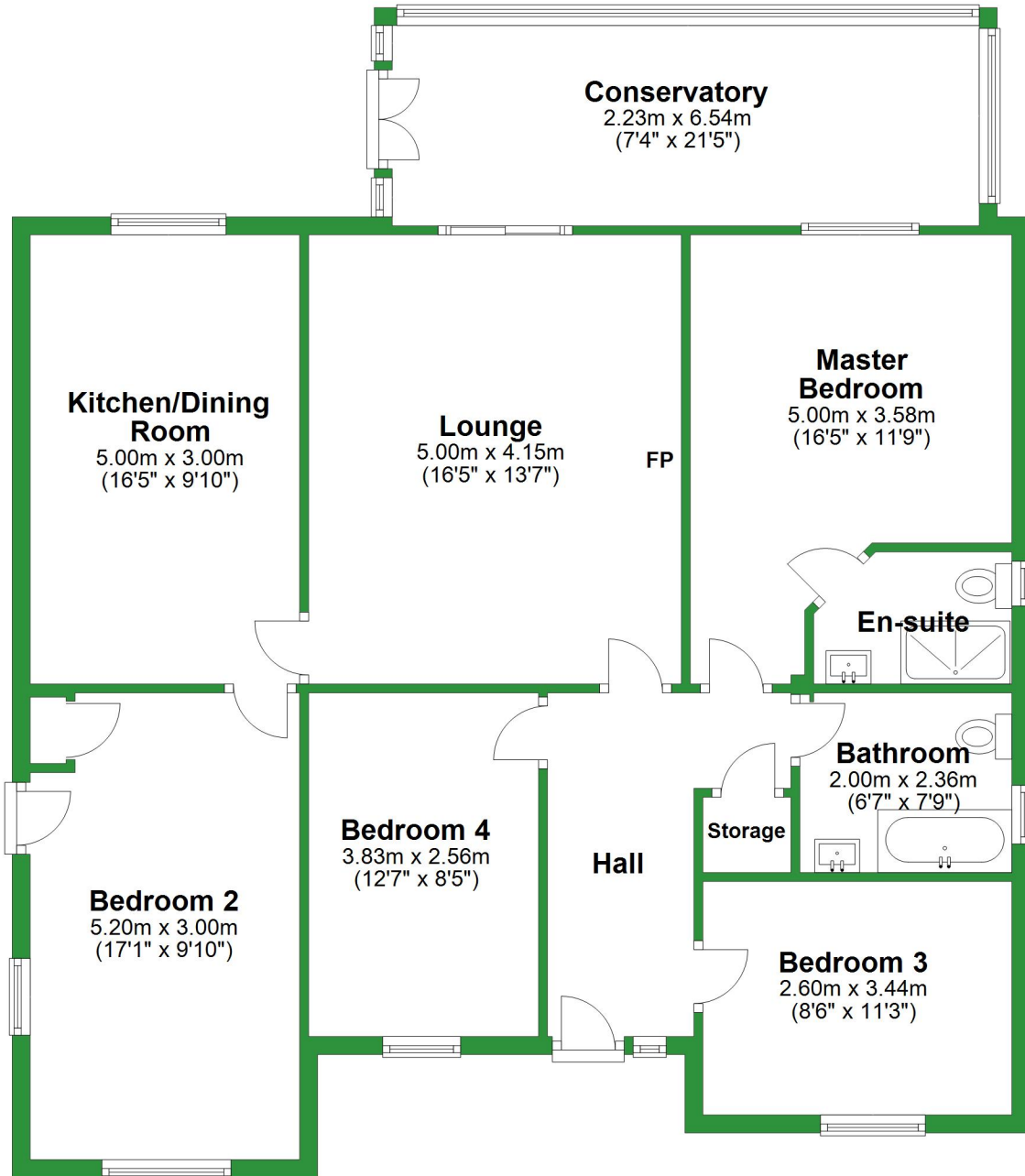


Ground Floor

Approx. 118.4 sq. metres (1274.9 sq. feet)

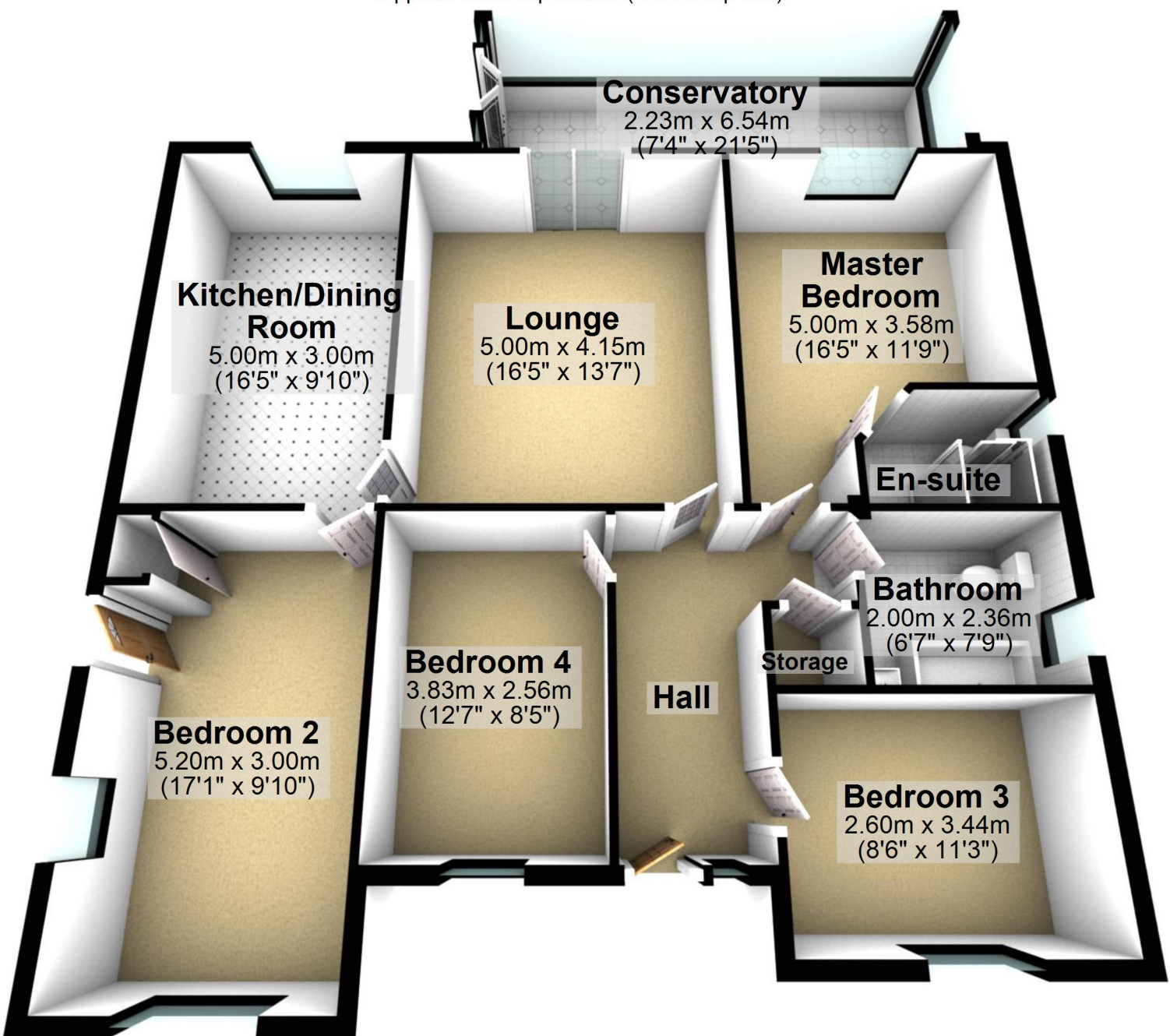


Total area: approx. 118.4 sq. metres (1274.9 sq. feet)

For illustrative purposes only. Not to scale. All sizes are approximate.
Plan produced using PlanUp.

Ground Floor

Approx. 118.4 sq. metres (1274.9 sq. feet)



Total area: approx. 118.4 sq. metres (1274.9 sq. feet)

For illustrative purposes only. Not to scale. All sizes are approximate.

Plan produced using PlanUp.