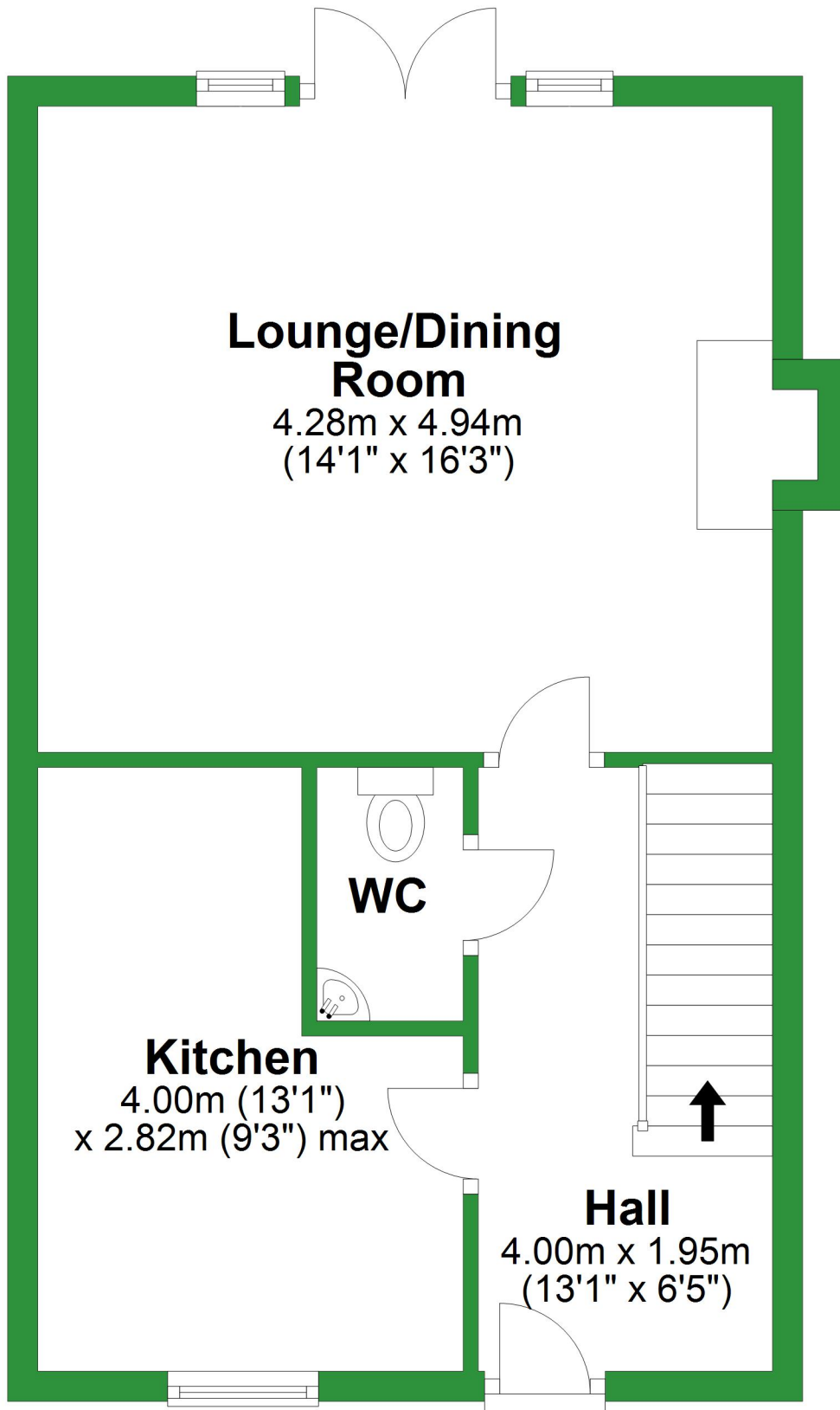


# Ground Floor

Approx. 40.8 sq. metres (439.3 sq. feet)



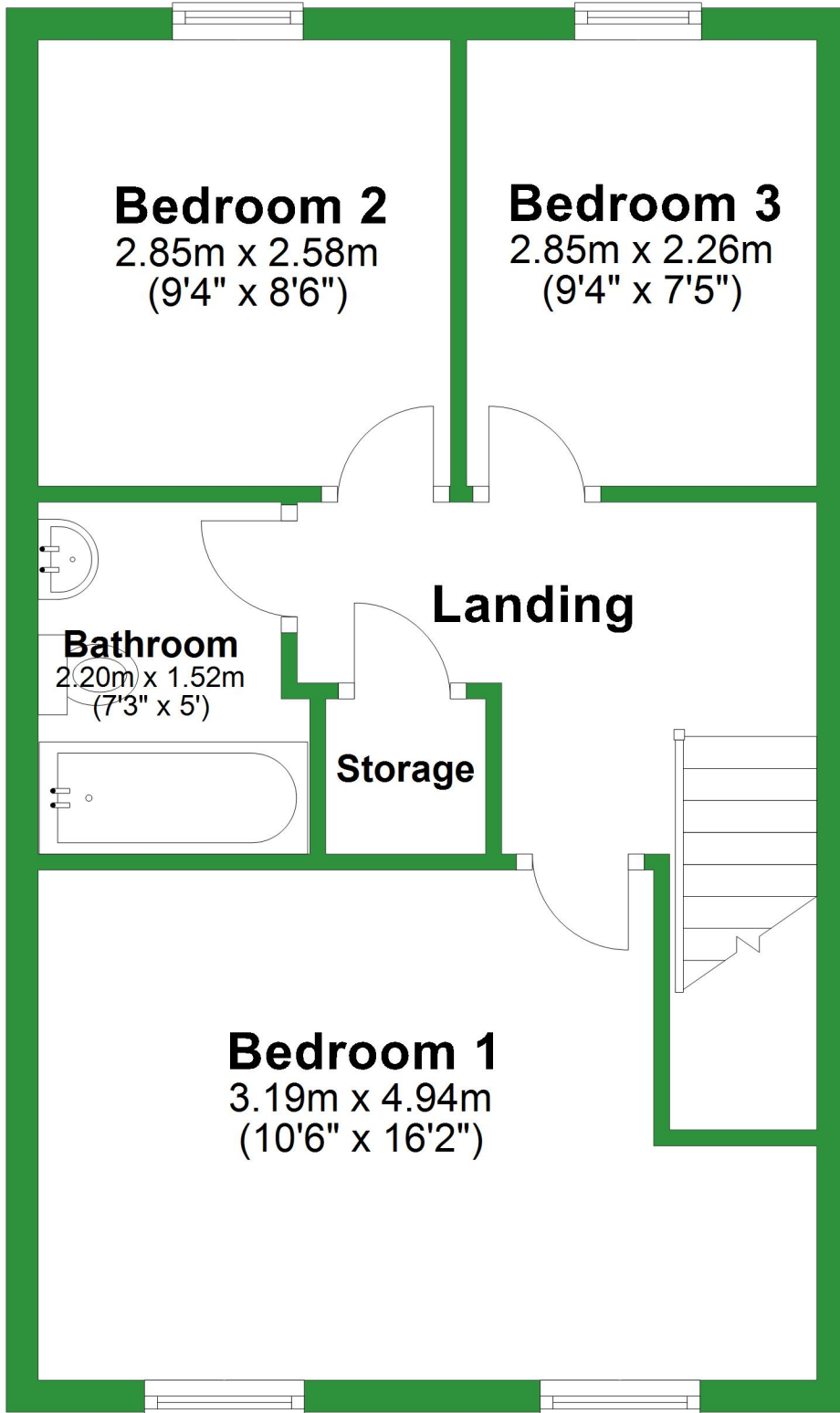
Total area: approx. 81.6 sq. metres (878.6 sq. feet)

For illustrative purposes only. Not to scale. All sizes are approximate.

Plan produced using PlanUp.

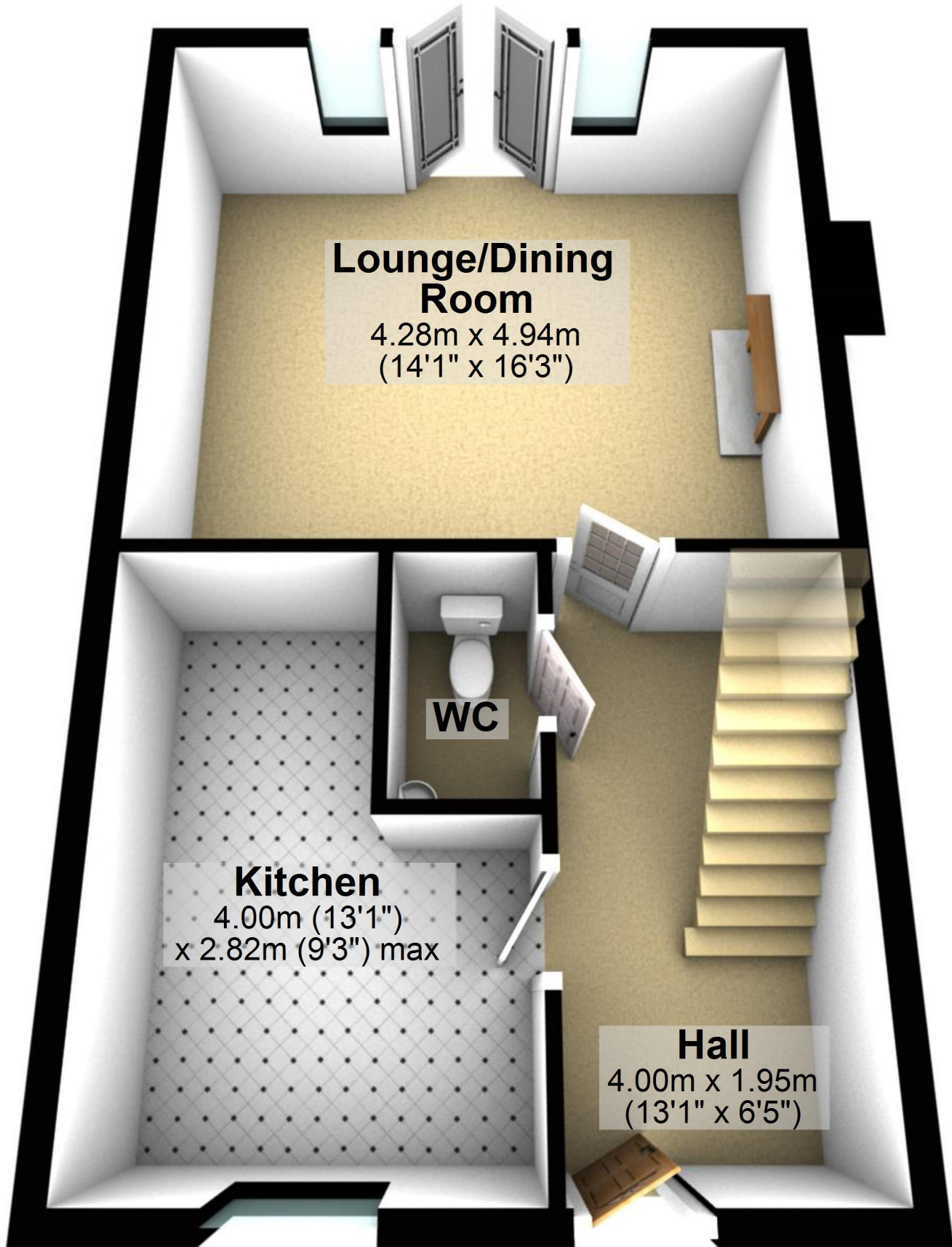
# First Floor

Approx. 40.8 sq. metres (439.3 sq. feet)



# Ground Floor

Approx. 40.8 sq. metres (439.3 sq. feet)



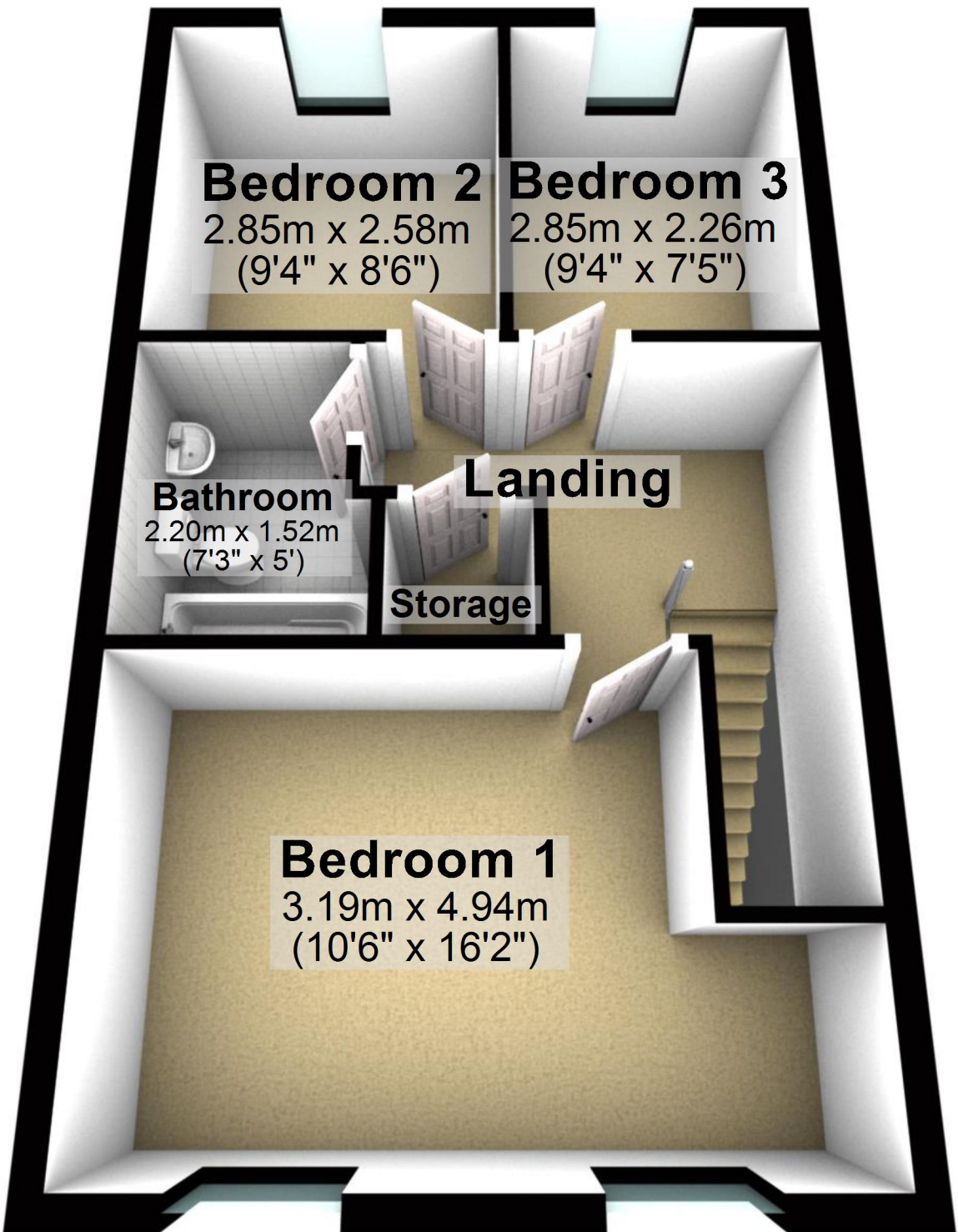
Total area: approx. 81.6 sq. metres (878.6 sq. feet)

For illustrative purposes only. Not to scale. All sizes are approximate.

Plan produced using PlanUp.

# First Floor

Approx. 40.8 sq. metres (439.3 sq. feet)



## Bedroom 2

2.85m x 2.58m  
(9'4" x 8'6")

## Bedroom 3

2.85m x 2.26m  
(9'4" x 7'5")

## Bathroom

2.20m x 1.52m  
(7'3" x 5')

## Landing

## Storage

## Bedroom 1

3.19m x 4.94m  
(10'6" x 16'2")