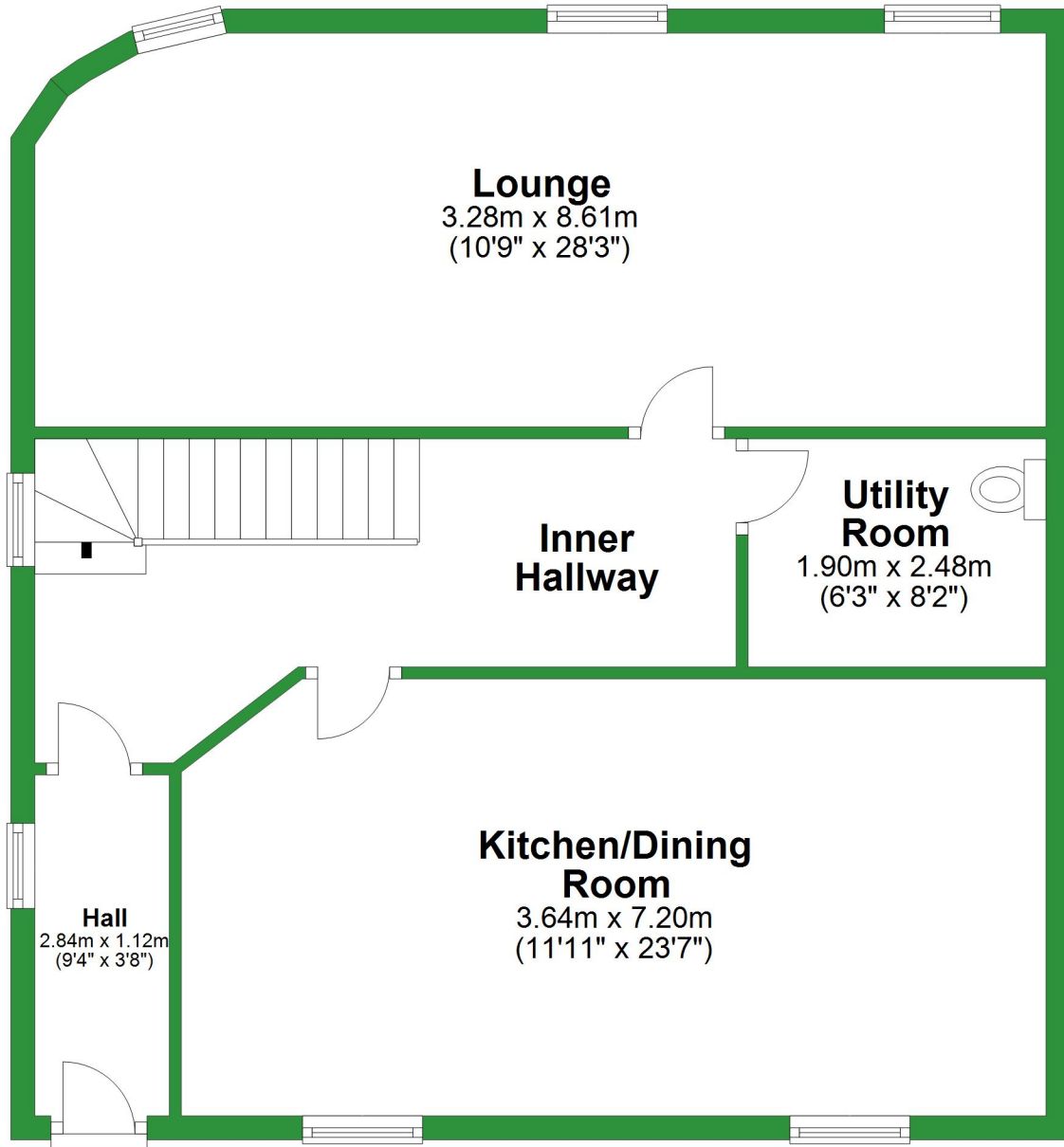


Ground Floor

Approx. 75.5 sq. metres (812.5 sq. feet)



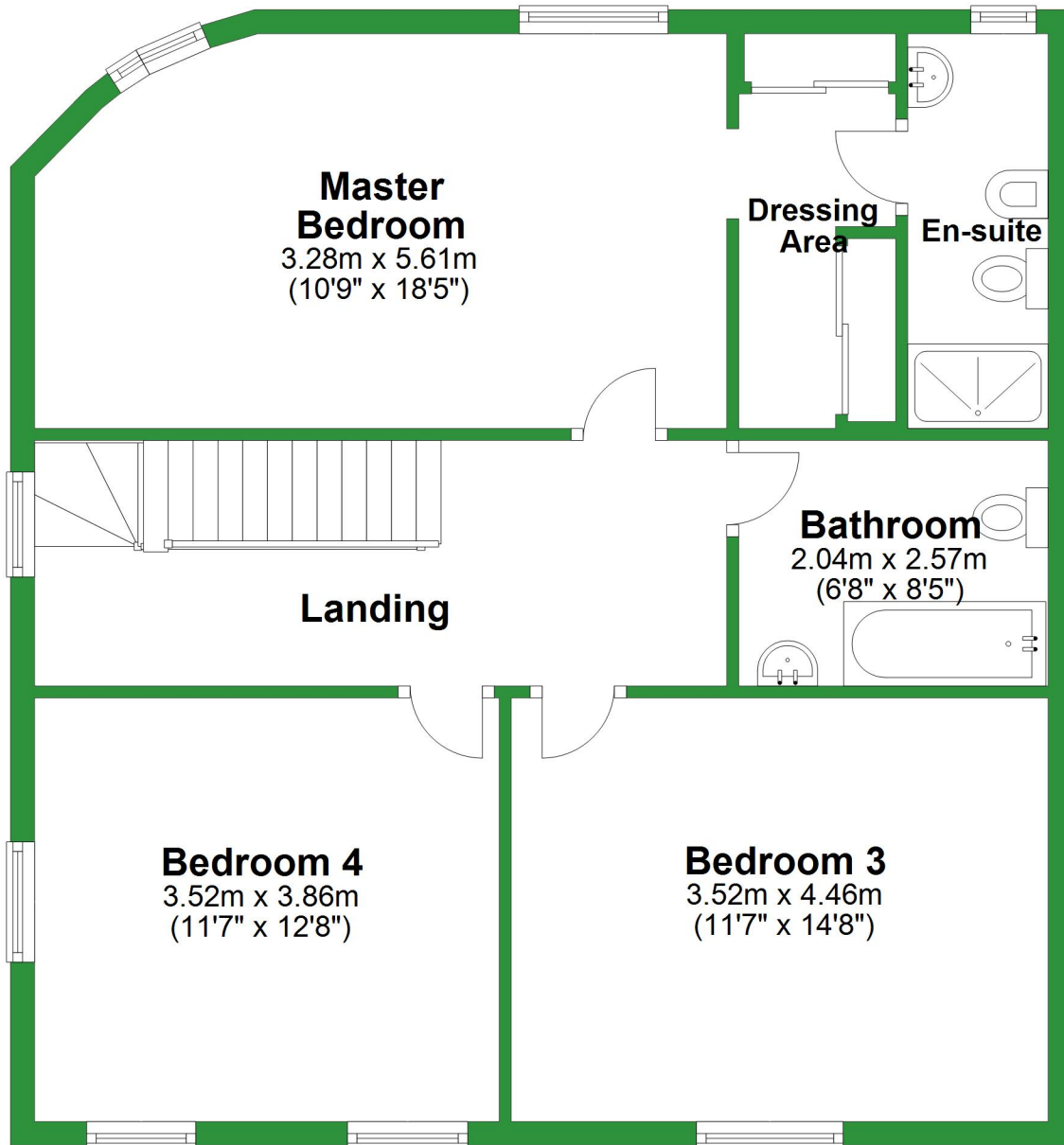
Total area: approx. 189.7 sq. metres (2041.7 sq. feet)

For illustrative purposes only. Not to scale. All sizes are approximate.

Plan produced using PlanUp.

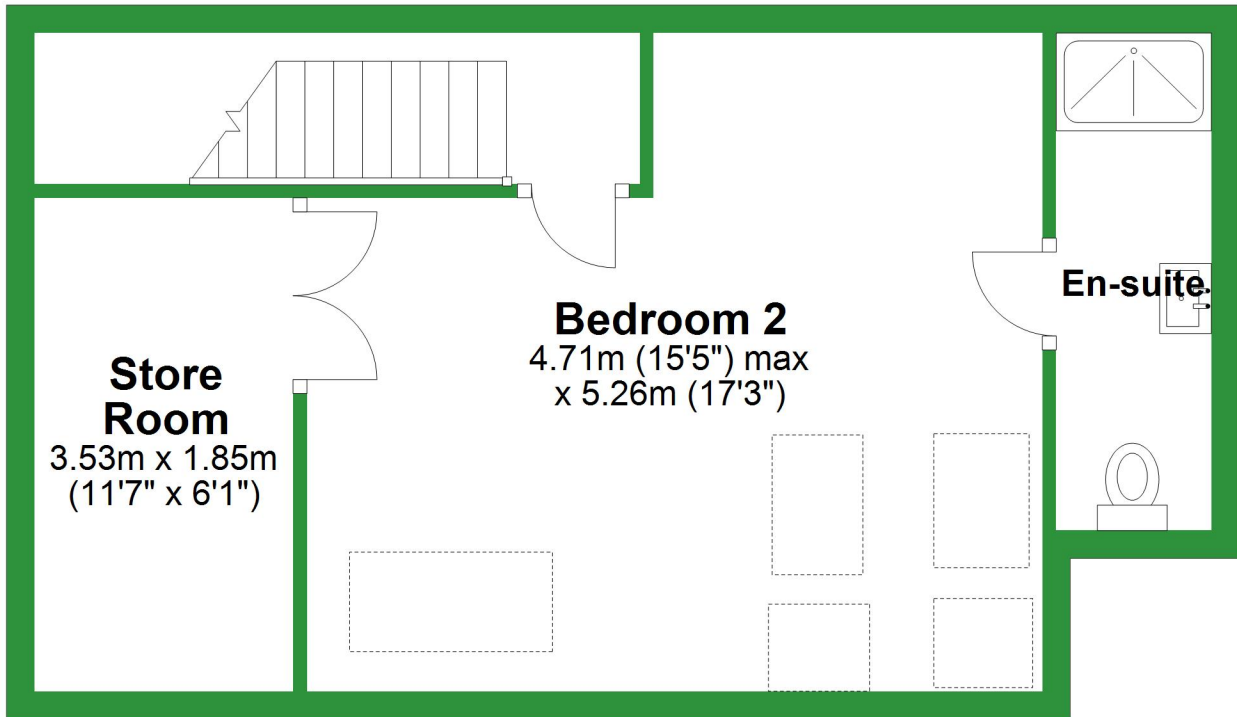
First Floor

Approx. 75.9 sq. metres (817.3 sq. feet)



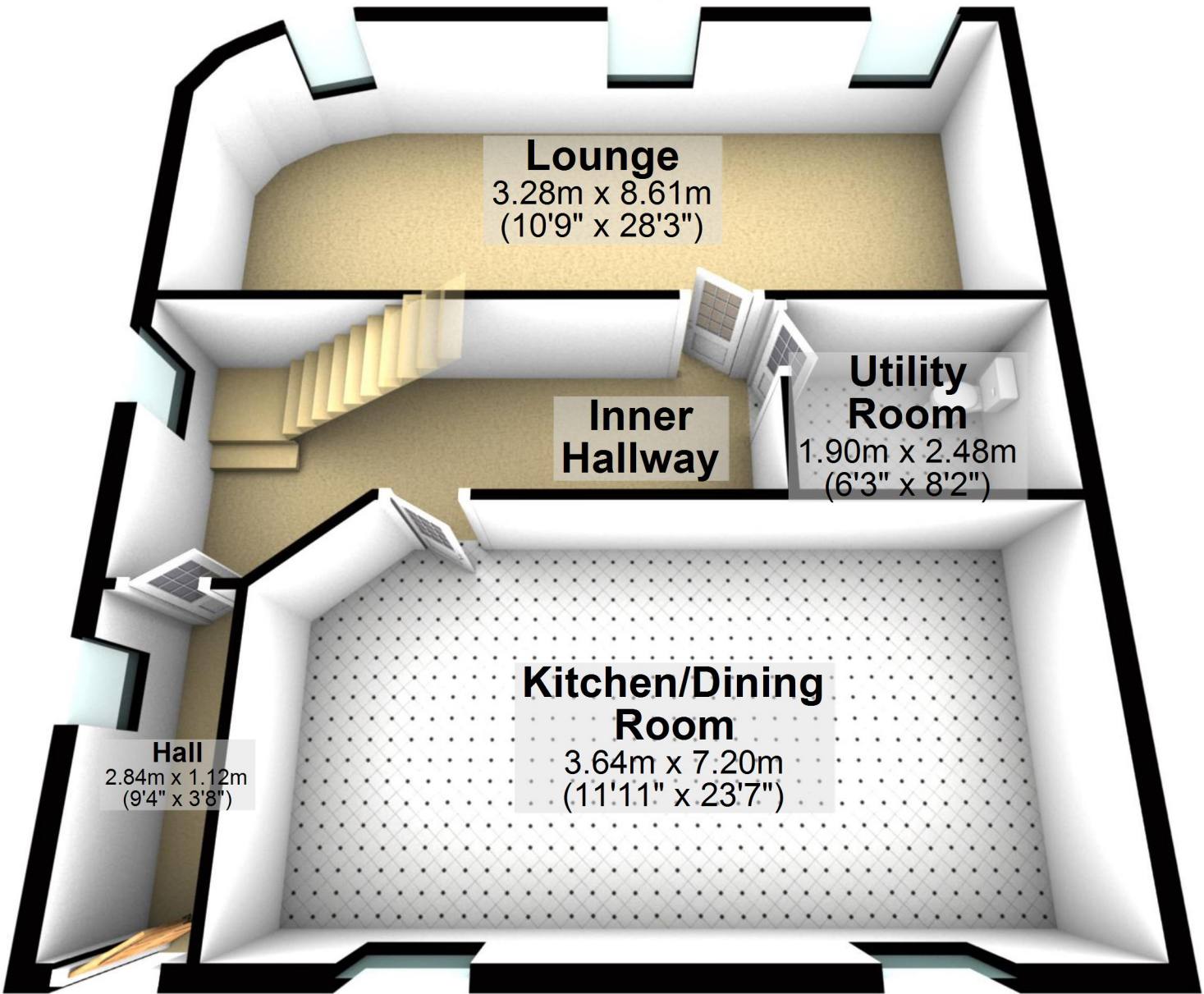
Second Floor

Approx. 38.3 sq. metres (411.9 sq. feet)



Ground Floor

Approx. 75.5 sq. metres (812.5 sq. feet)



Lounge

3.28m x 8.61m
(10'9" x 28'3")

Inner Hallway

Utility Room

1.90m x 2.48m
(6'3" x 8'2")

Kitchen/Dining Room

3.64m x 7.20m
(11'11" x 23'7")

Hall

2.84m x 1.12m
(9'4" x 3'8")

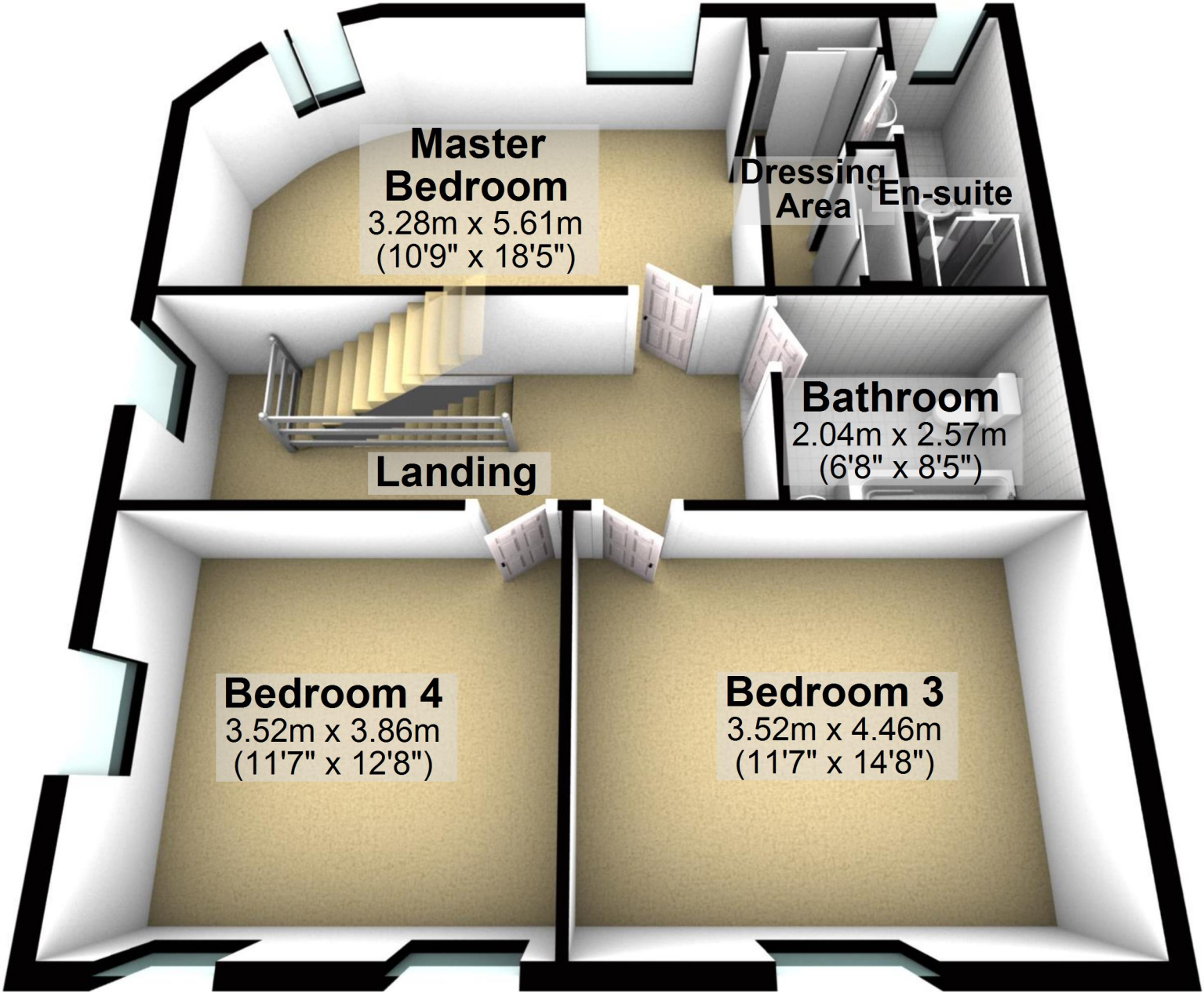
Total area: approx. 189.7 sq. metres (2041.7 sq. feet)

For illustrative purposes only. Not to scale. All sizes are approximate.

Plan produced using PlanUp.

First Floor

Approx. 75.9 sq. metres (817.3 sq. feet)



Master Bedroom
3.28m x 5.61m
(10'9" x 18'5")

Dressing Area
En-suite

Bathroom
2.04m x 2.57m
(6'8" x 8'5")

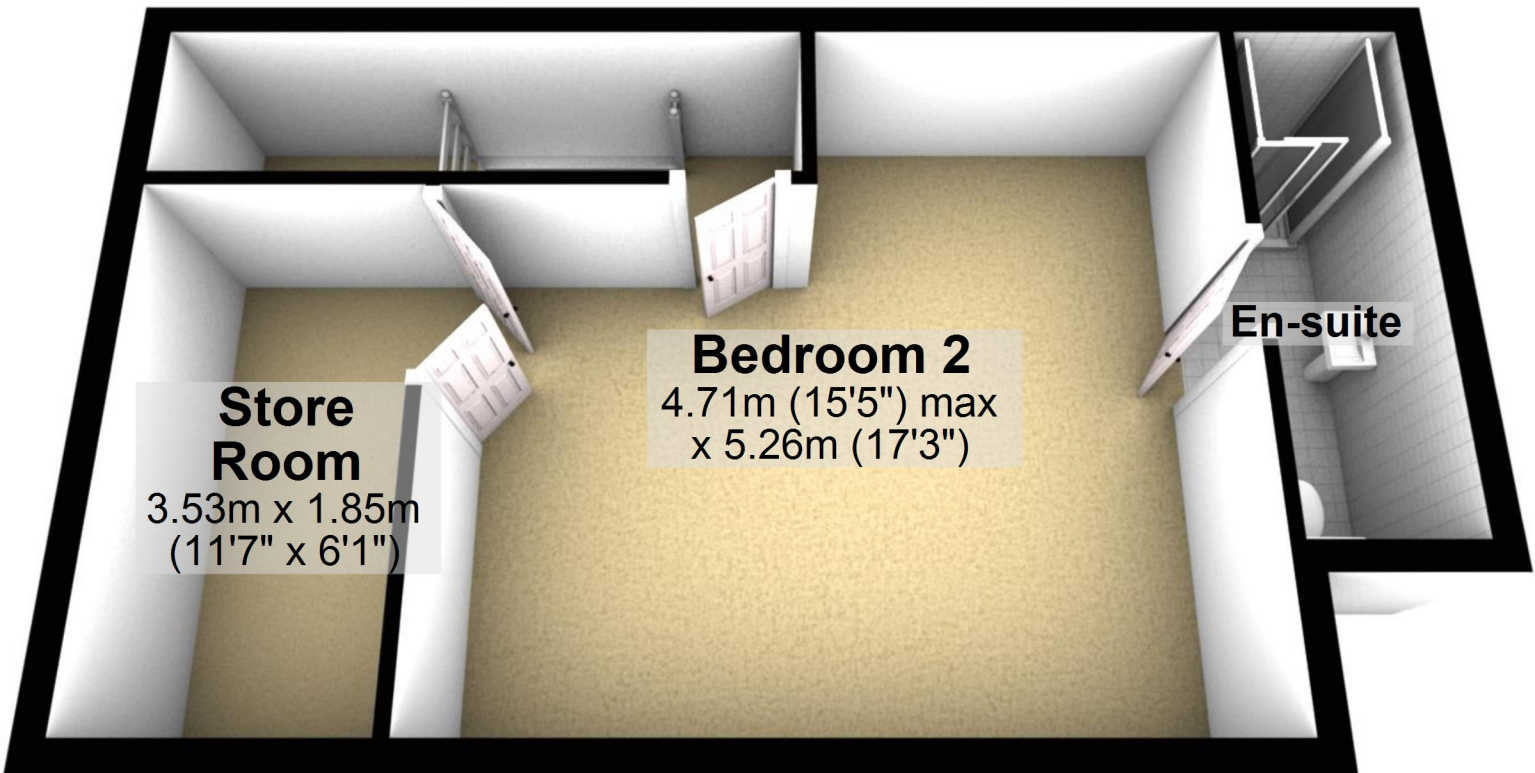
Landing

Bedroom 4
3.52m x 3.86m
(11'7" x 12'8")

Bedroom 3
3.52m x 4.46m
(11'7" x 14'8")

Second Floor

Approx. 38.3 sq. metres (411.9 sq. feet)



Store Room

3.53m x 1.85m
(11'7" x 6'1")

Bedroom 2

4.71m (15'5") max
x 5.26m (17'3")

En-suite