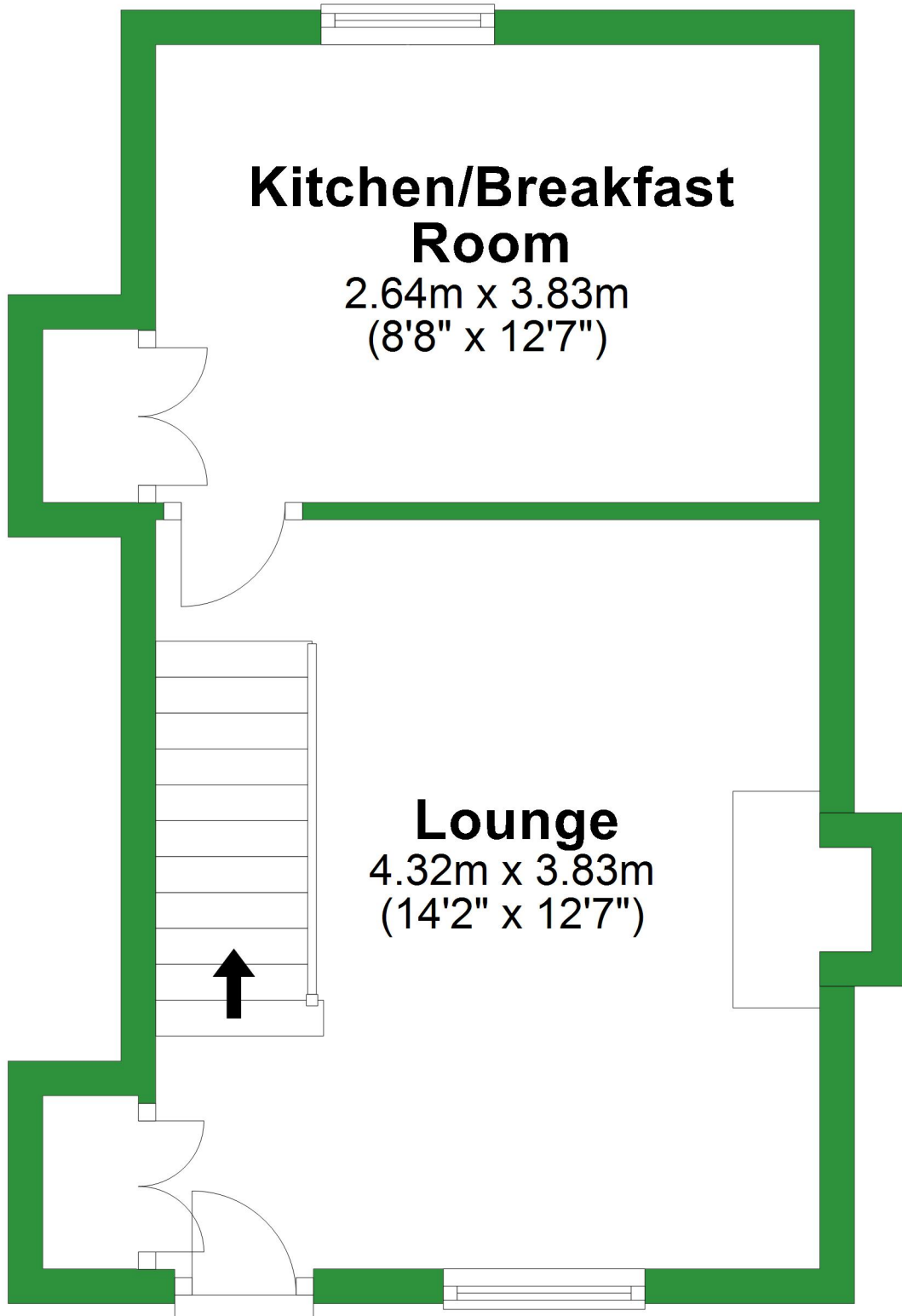


Ground Floor

Approx. 28.3 sq. metres (305.1 sq. feet)



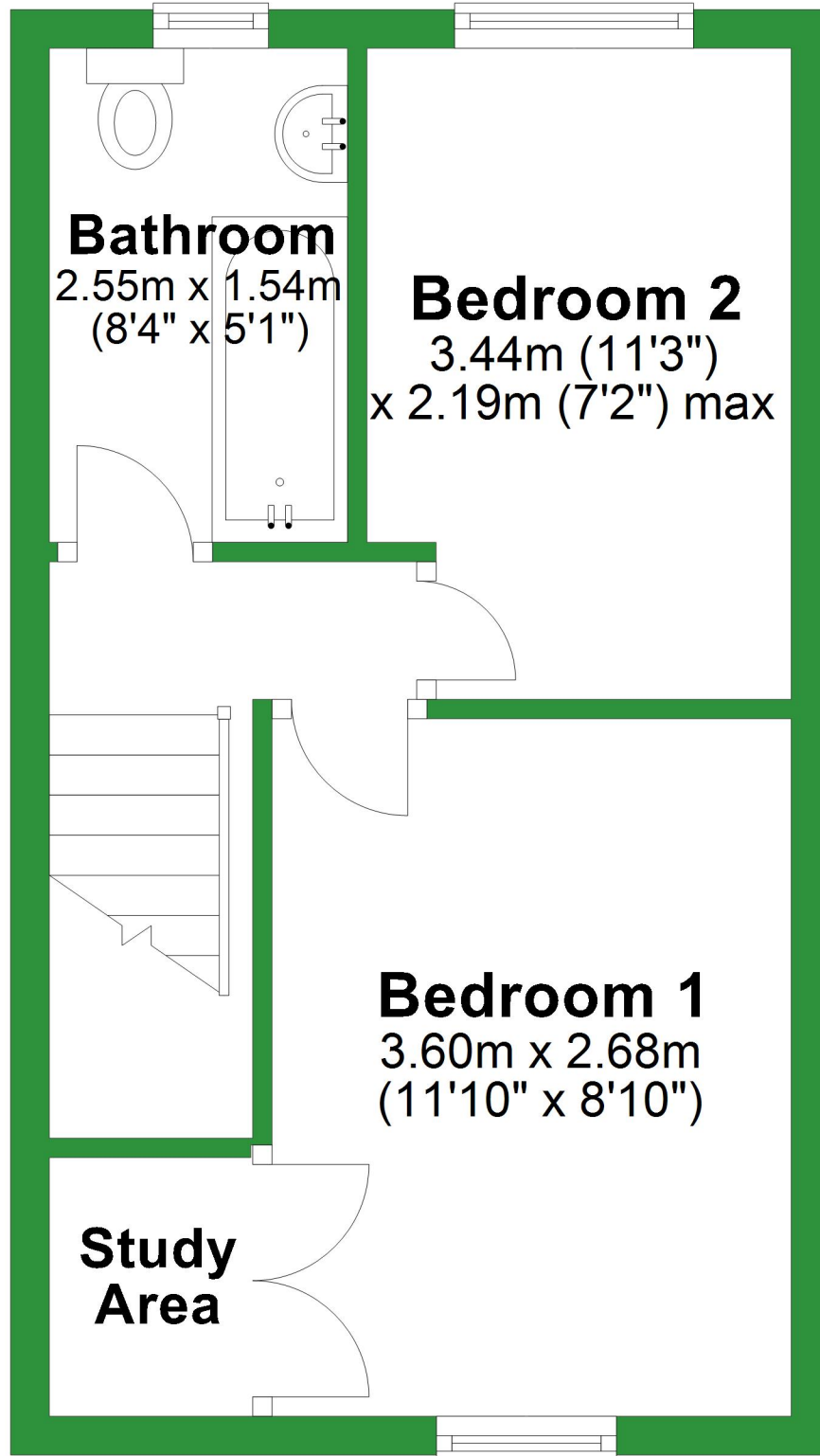
Total area: approx. 60.1 sq. metres (646.4 sq. feet)

For illustrative purposes only. Not to scale. All sizes are approximate.

Plan produced using PlanUp.

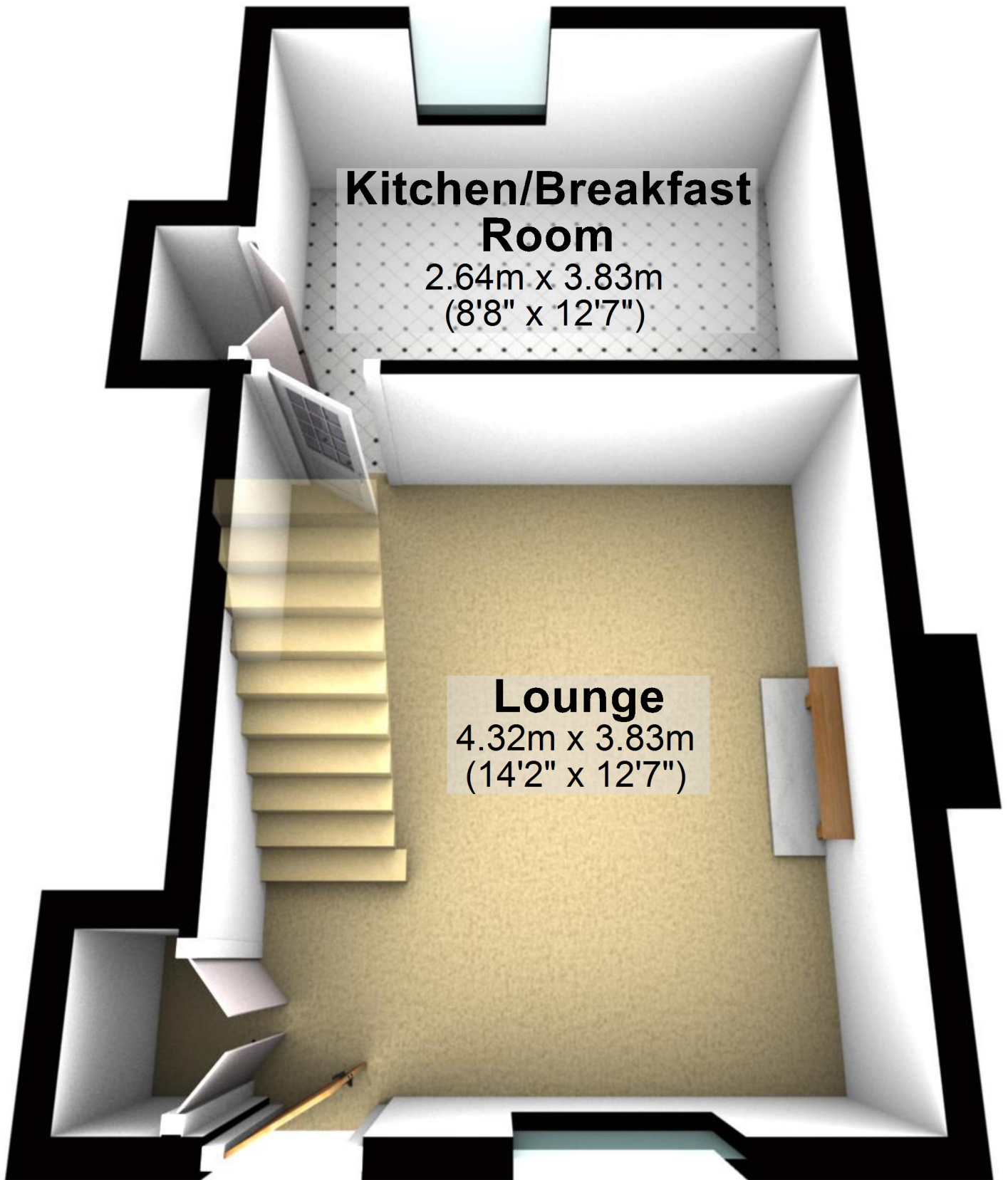
First Floor

Approx. 31.7 sq. metres (341.4 sq. feet)



Ground Floor

Approx. 28.3 sq. metres (305.1 sq. feet)



Kitchen/Breakfast Room

2.64m x 3.83m
(8'8" x 12'7")

Lounge

4.32m x 3.83m
(14'2" x 12'7")

Total area: approx. 60.1 sq. metres (646.4 sq. feet)

For illustrative purposes only. Not to scale. All sizes are approximate.

Plan produced using PlanUp.

First Floor

Approx. 31.7 sq. metres (341.4 sq. feet)

Bathroom

2.55m x 1.54m
(8'4" x 5'1")

Bedroom 2

3.44m (11'3")
x 2.19m (7'2") max

Bedroom 1

3.60m x 2.68m
(11'10" x 8'10")

Study
Area

