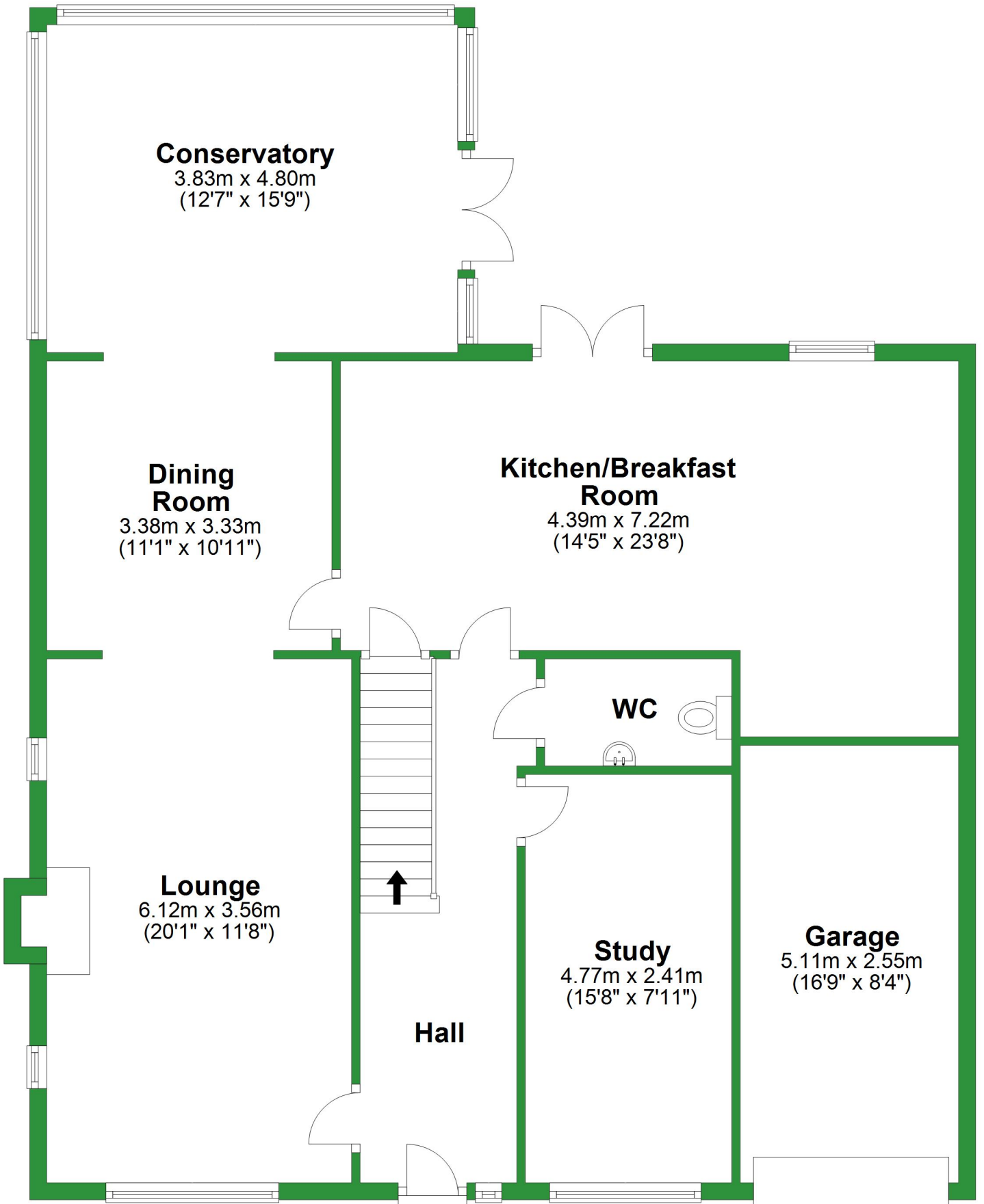


# Ground Floor

Approx. 121.1 sq. metres (1303.5 sq. feet)

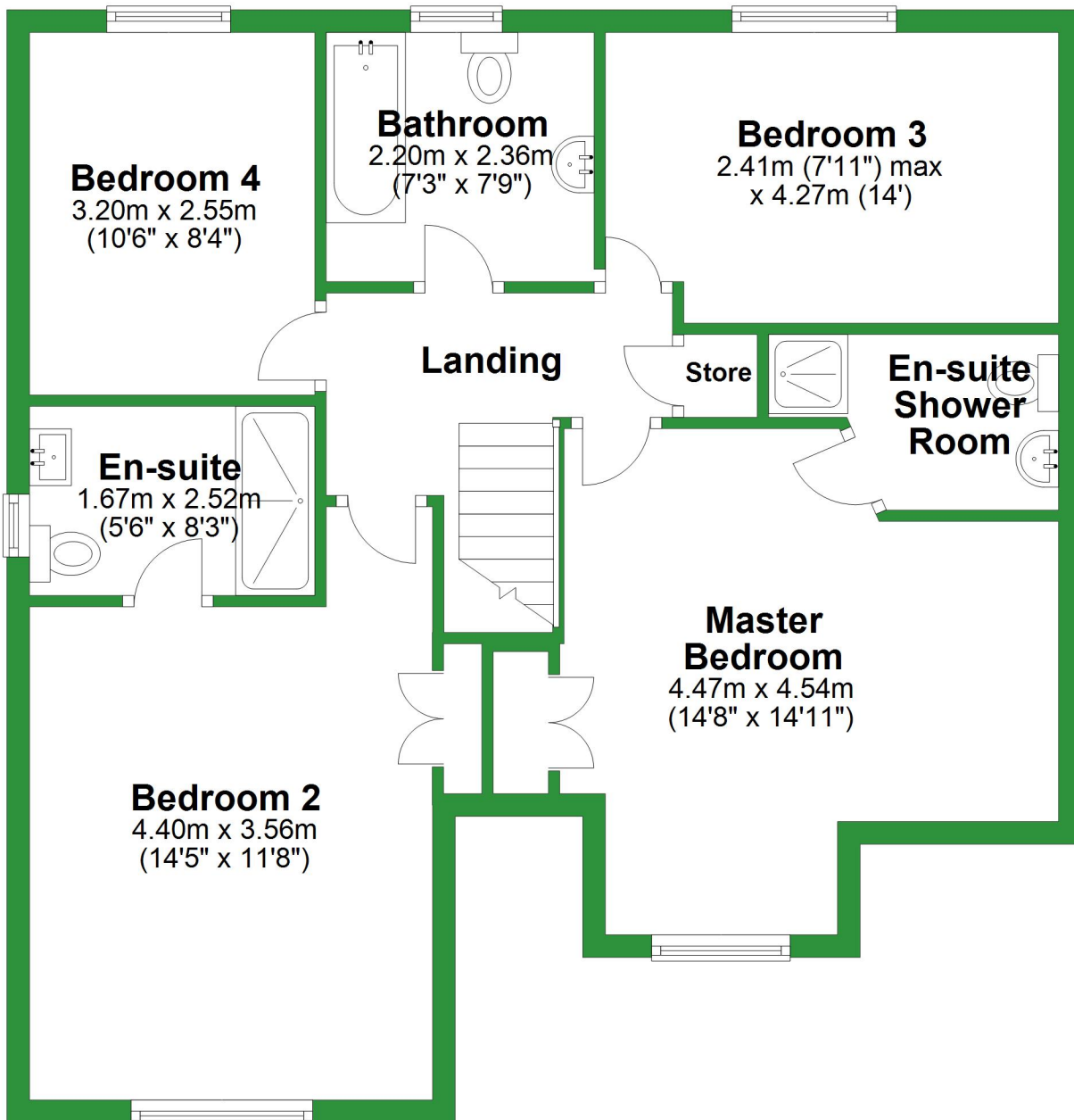


Total area: approx. 195.0 sq. metres (2099.1 sq. feet)

For illustrative purposes only. Not to scale. All sizes are approximate.  
Plan produced using PlanUp.

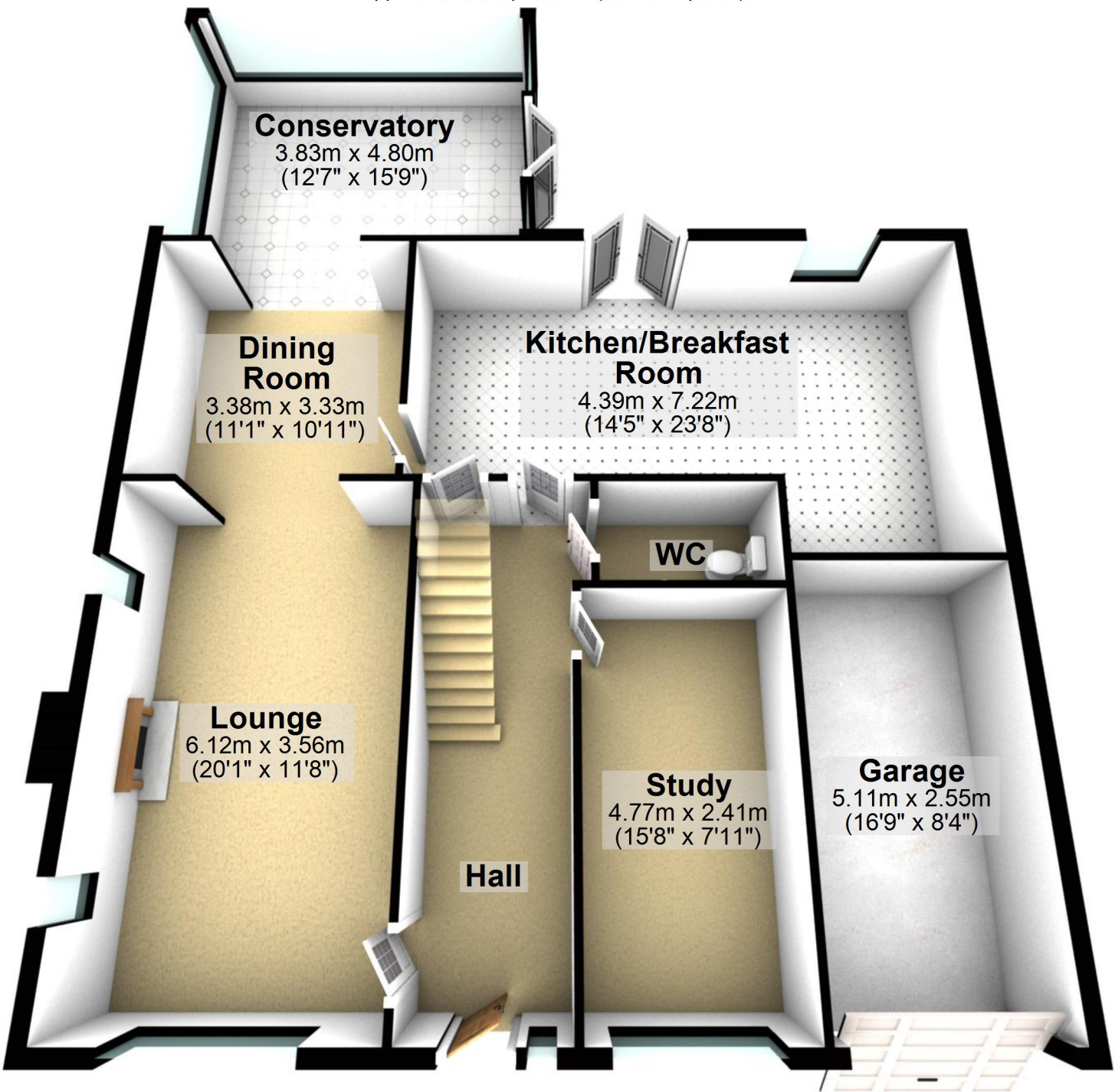
# First Floor

Approx. 73.9 sq. metres (795.5 sq. feet)



## Ground Floor

Approx. 121.1 sq. metres (1303.5 sq. feet)

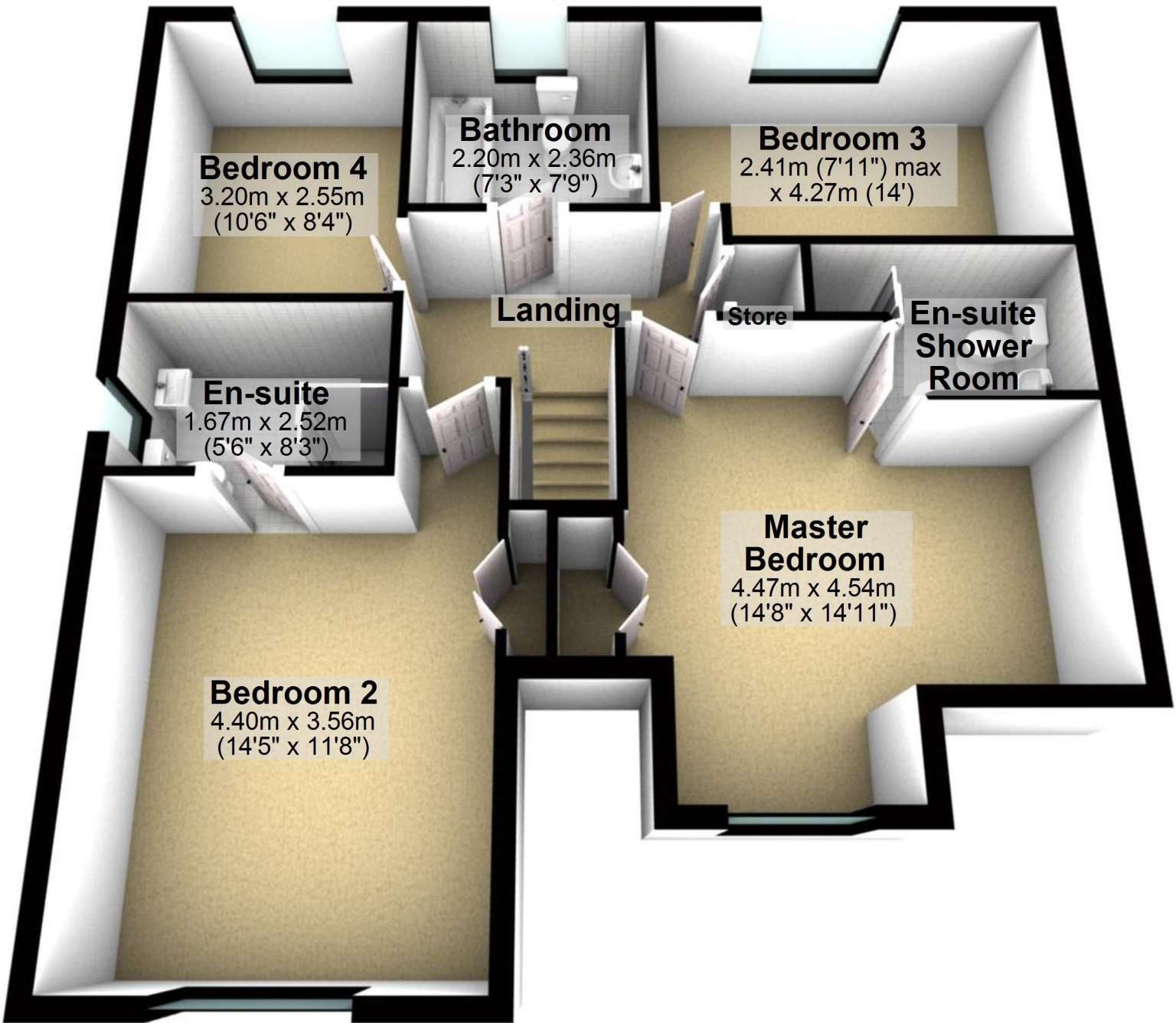


Total area: approx. 195.0 sq. metres (2099.1 sq. feet)

For illustrative purposes only. Not to scale. All sizes are approximate.  
Plan produced using PlanUp.

# First Floor

Approx. 73.9 sq. metres (795.5 sq. feet)



**Bedroom 4**  
3.20m x 2.55m  
(10'6" x 8'4")

**Bathroom**  
2.20m x 2.36m  
(7'3" x 7'9")

**Bedroom 3**  
2.41m (7'11") max  
x 4.27m (14')

**Landing**

**Store**

**En-suite  
Shower  
Room**

**En-suite**  
1.67m x 2.52m  
(5'6" x 8'3")

**Master  
Bedroom**  
4.47m x 4.54m  
(14'8" x 14'11")

**Bedroom 2**  
4.40m x 3.56m  
(14'5" x 11'8")