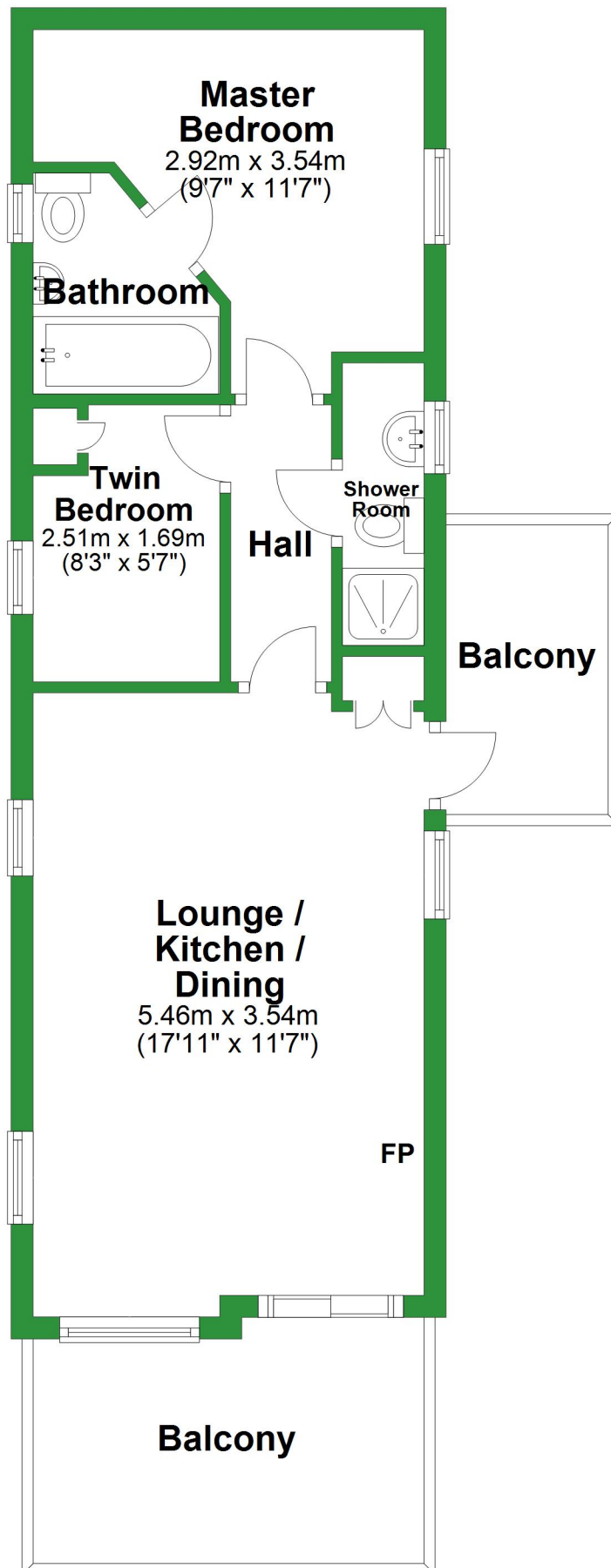


# Ground Floor

Approx. 40.4 sq. metres (435.1 sq. feet)

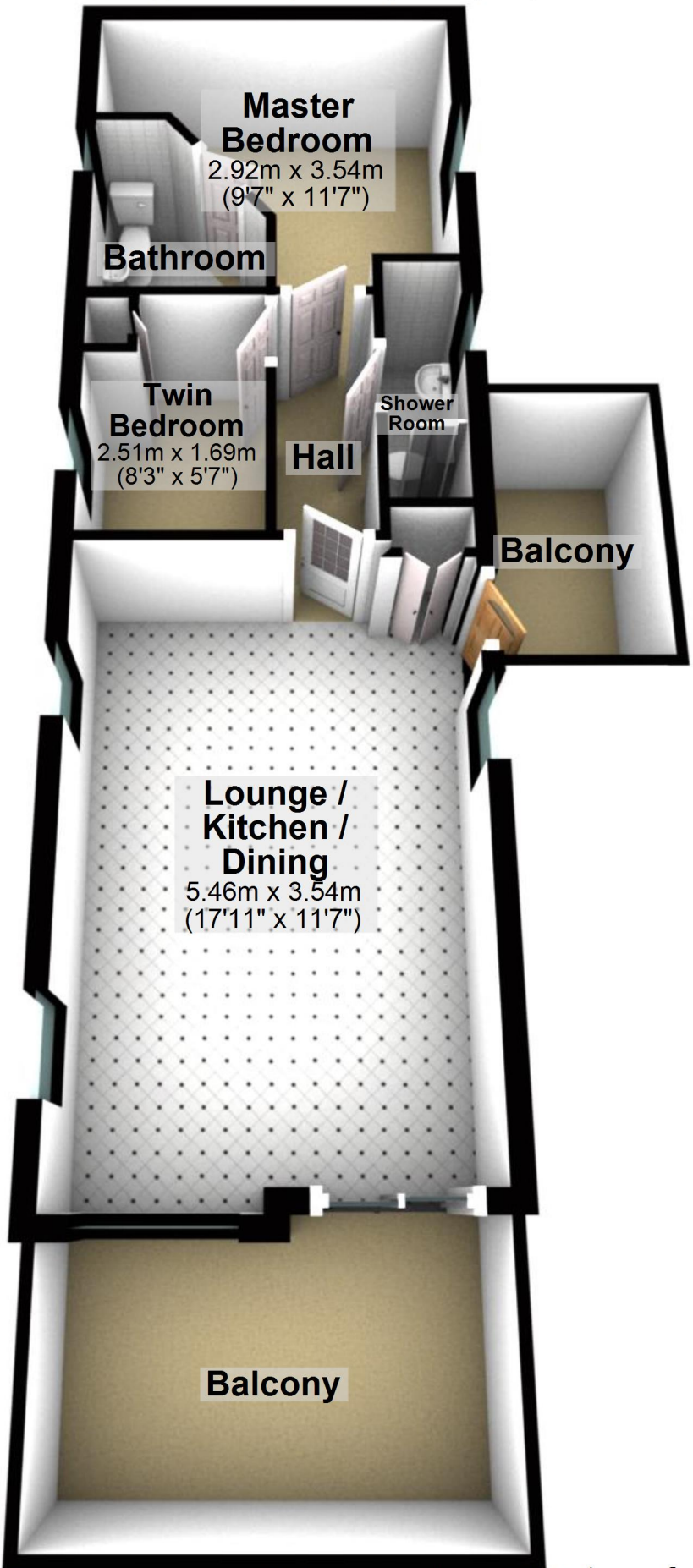


Total area: approx. 40.4 sq. metres (435.1 sq. feet)

For illustrative purposes only. Not to scale. All sizes are approximate.  
Plan produced using PlanUp.

# Ground Floor

Approx. 40.4 sq. metres (435.1 sq. feet)



Total area: approx. 40.4 sq. metres (435.1 sq. feet)

For illustrative purposes only. Not to scale. All sizes are approximate.

Plan produced using PlanUp.

