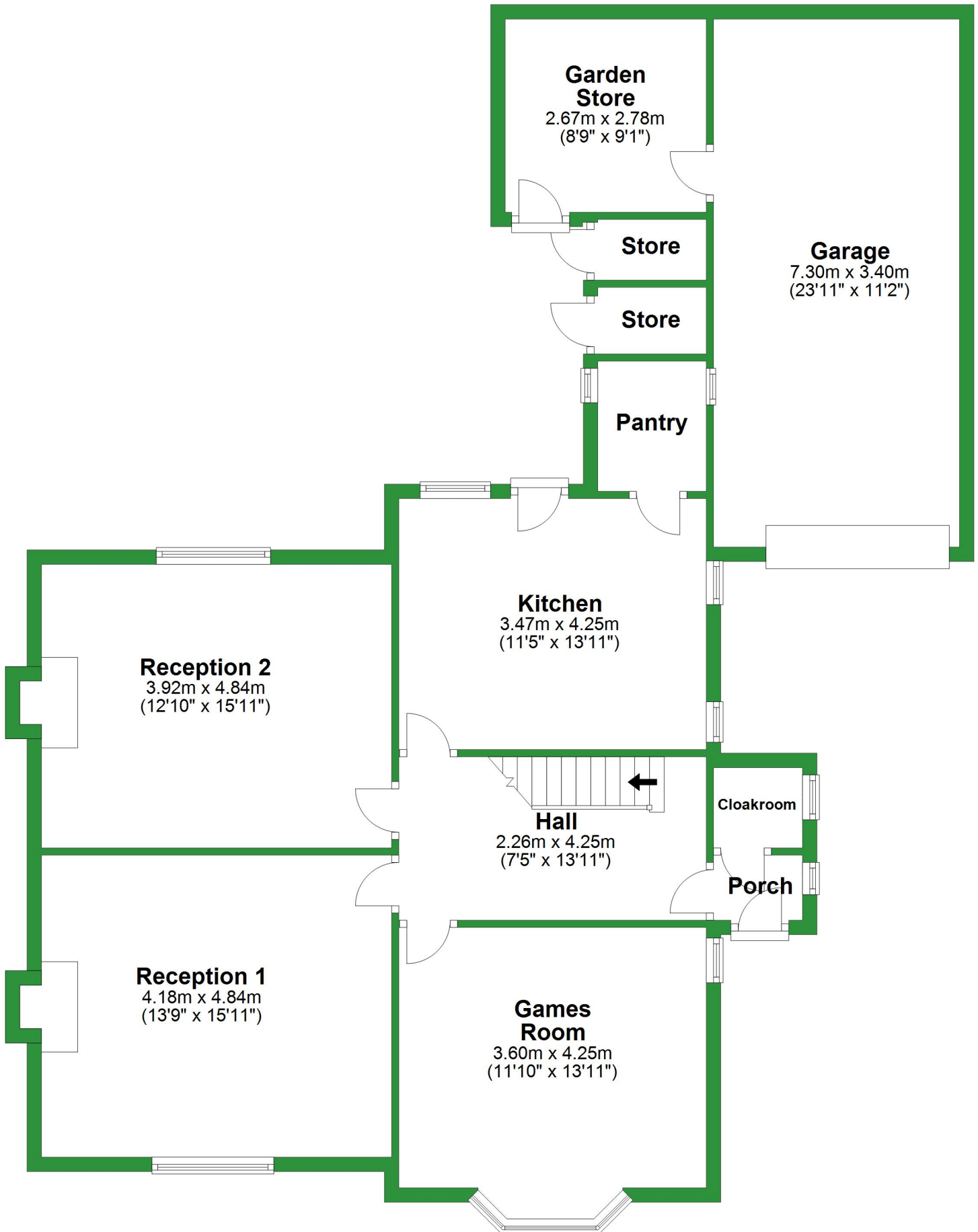


# Ground Floor

Approx. 123.0 sq. metres (1323.8 sq. feet)

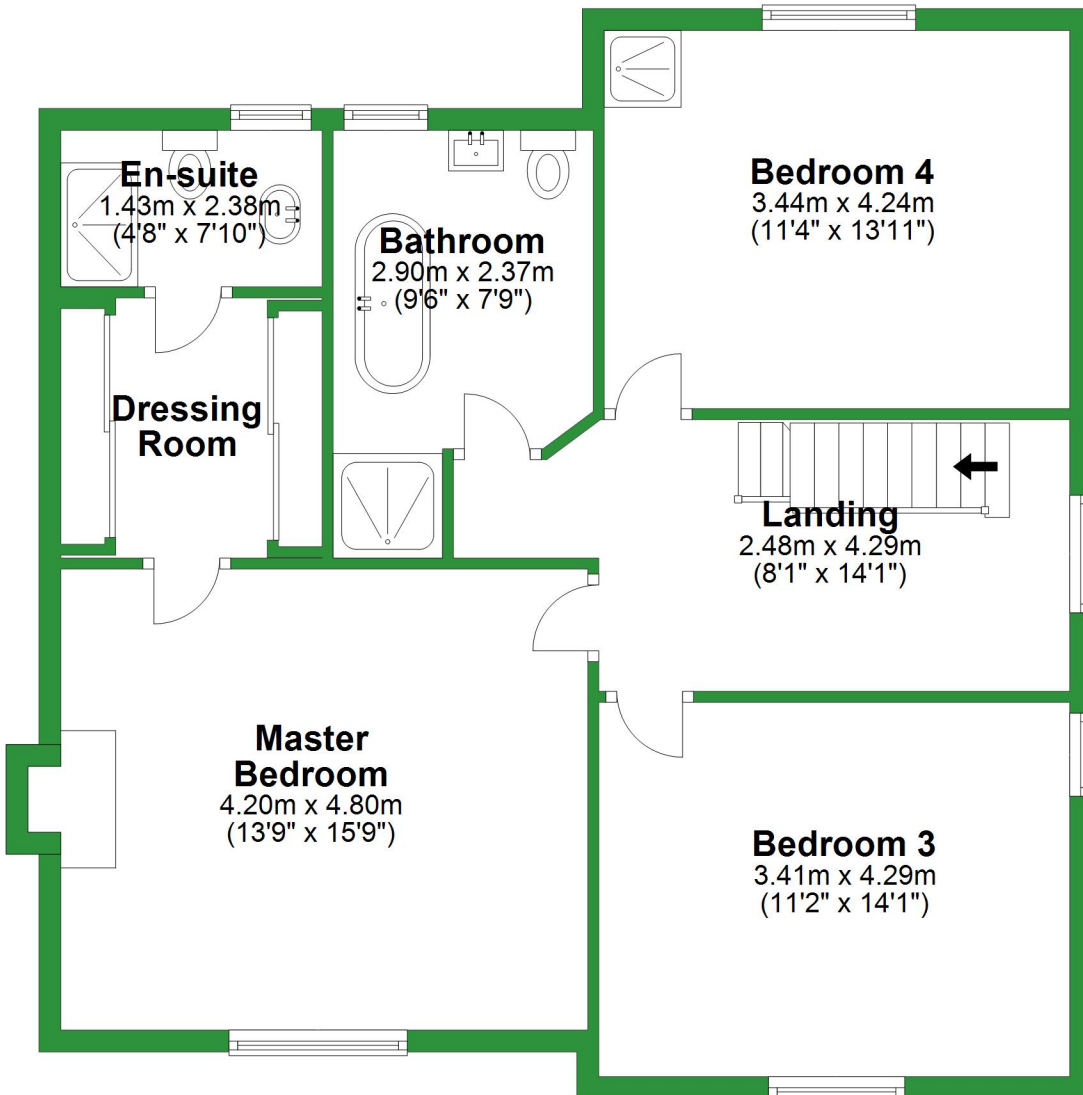


Total area: approx. 238.3 sq. metres (2564.5 sq. feet)

For illustrative purposes only. Not to scale. All sizes are approximate.  
Plan produced using PlanUp.

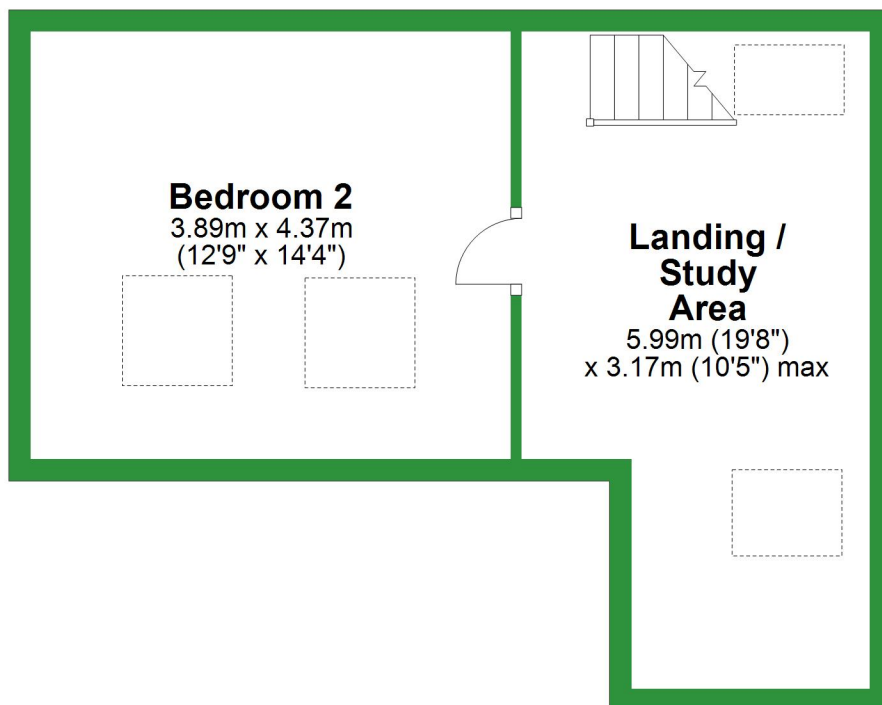
## First Floor

Approx. 81.0 sq. metres (871.9 sq. feet)



## Second Floor

Approx. 34.3 sq. metres (368.9 sq. feet)



# Ground Floor

Approx. 123.0 sq. metres (1323.8 sq. feet)

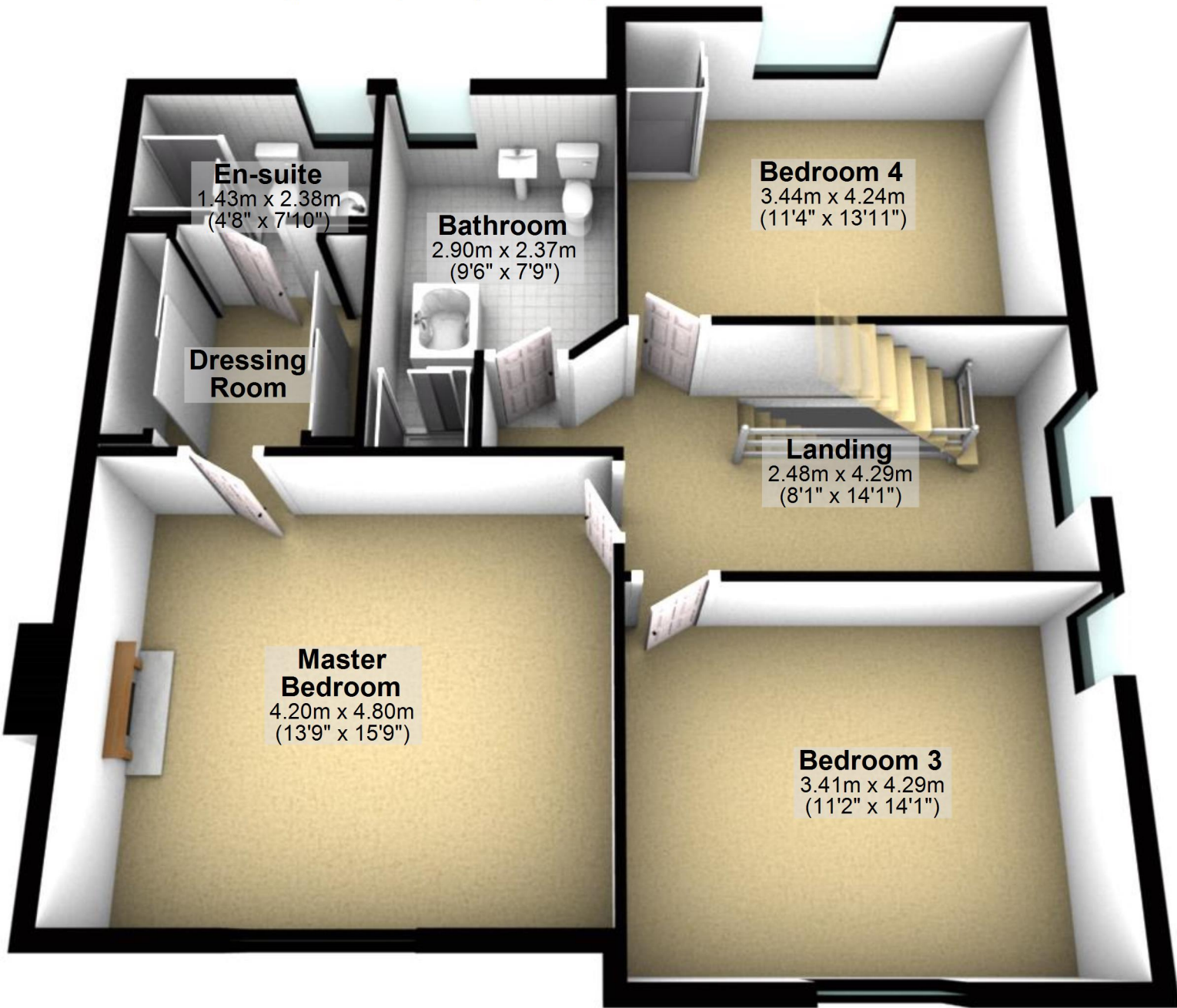


Total area: approx. 238.3 sq. metres (2564.5 sq. feet)

For illustrative purposes only. Not to scale. All sizes are approximate.  
Plan produced using PlanUp.

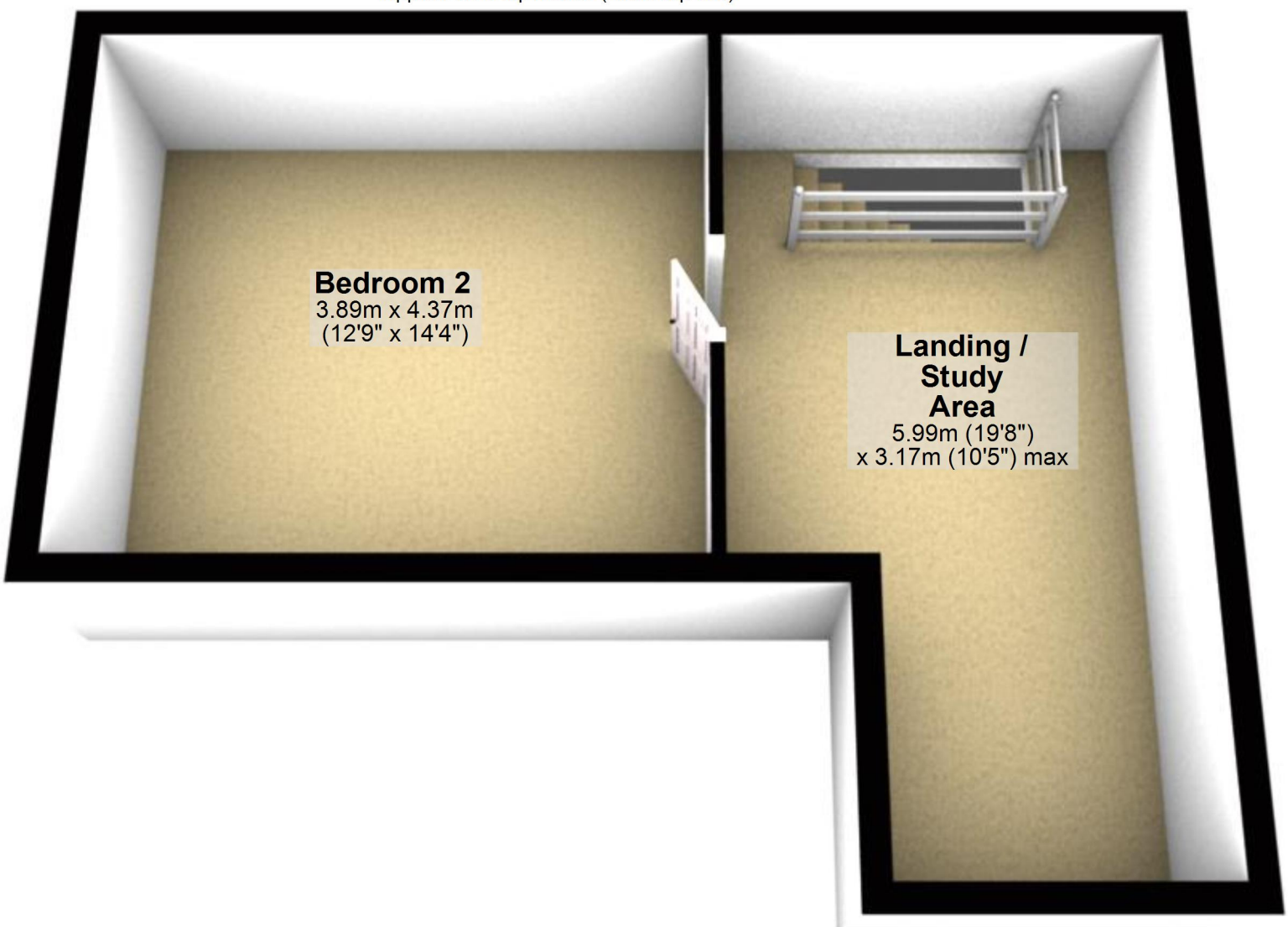
## First Floor

Approx. 81.0 sq. metres (871.9 sq. feet)

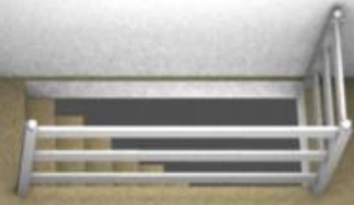


## Second Floor

Approx. 34.3 sq. metres (368.9 sq. feet)



**Bedroom 2**  
3.89m x 4.37m  
(12'9" x 14'4")



**Landing /  
Study  
Area**  
5.99m (19'8")  
x 3.17m (10'5") max