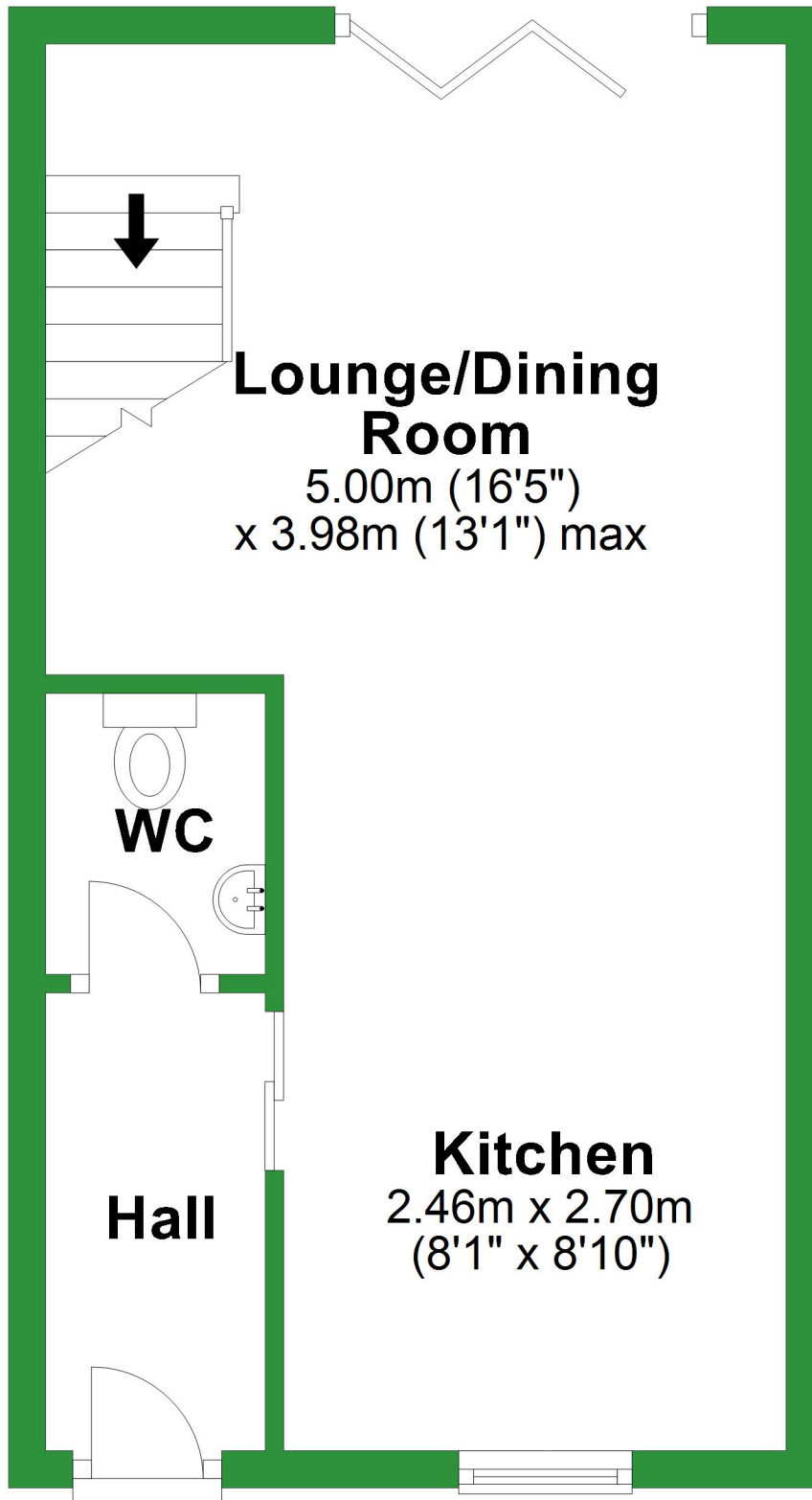


Ground Floor

Approx. 30.1 sq. metres (323.9 sq. feet)



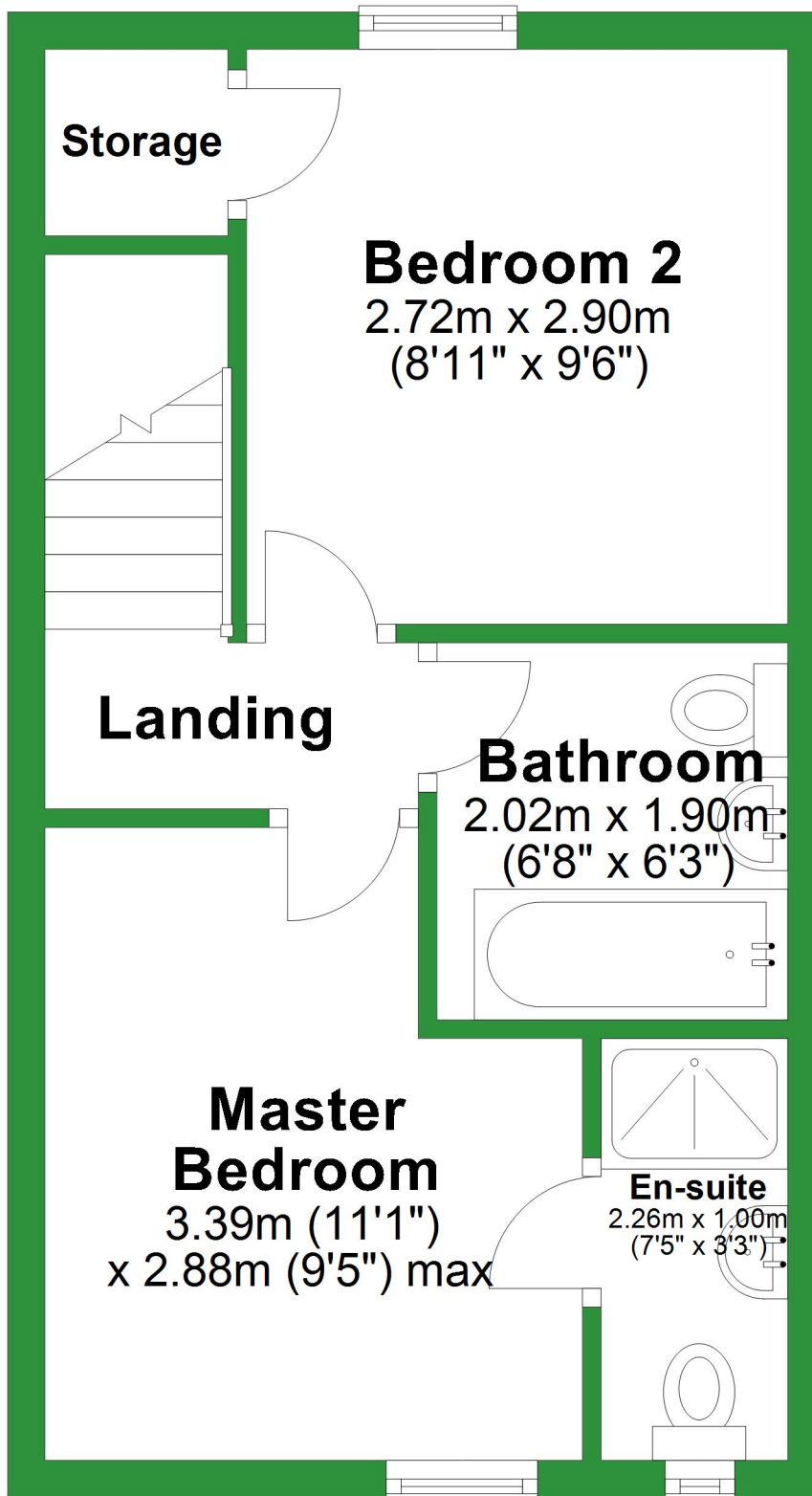
Total area: approx. 60.2 sq. metres (647.7 sq. feet)

For illustrative purposes only. Not to scale. All sizes are approximate.

Plan produced using PlanUp.

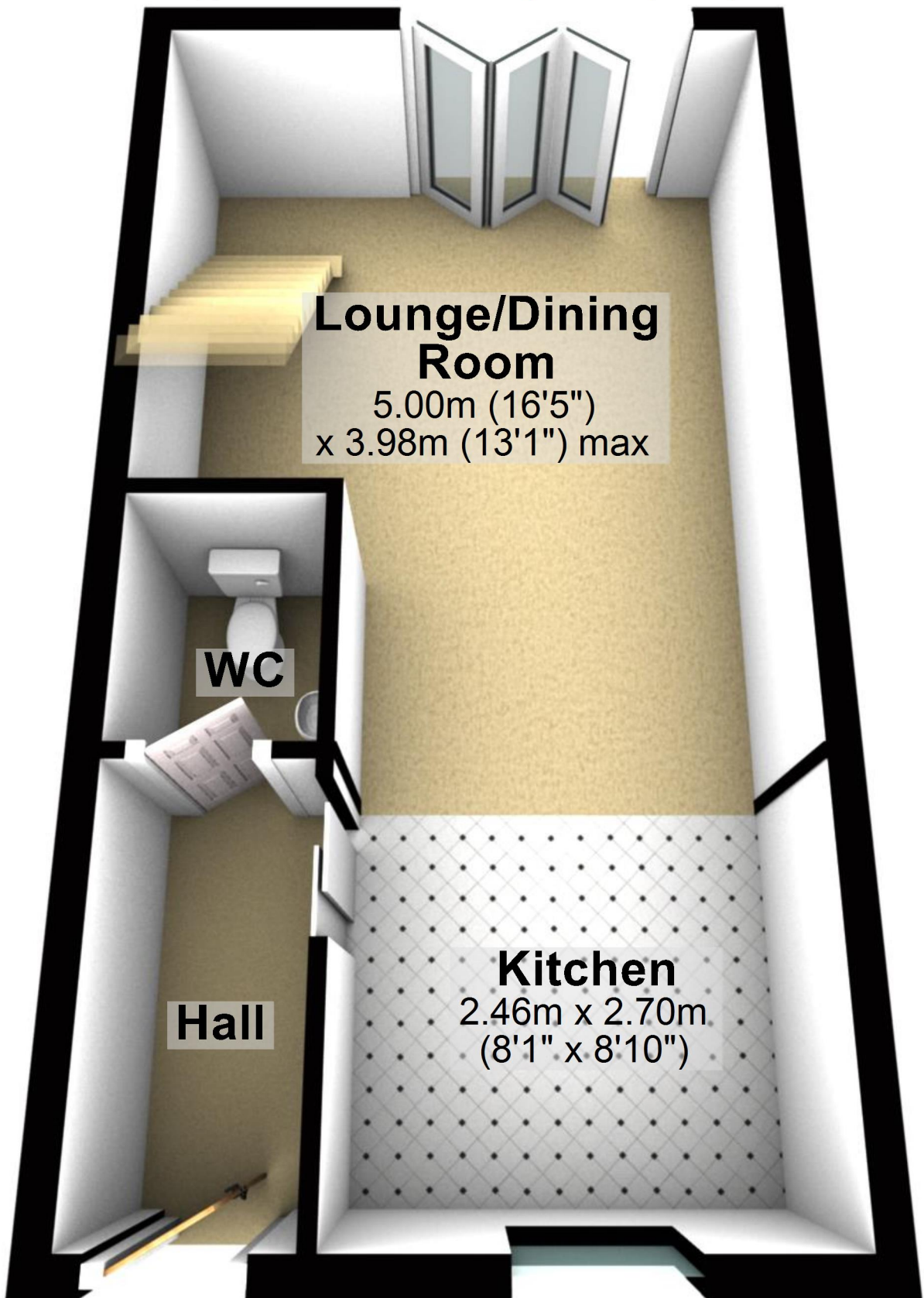
First Floor

Approx. 30.1 sq. metres (323.9 sq. feet)



Ground Floor

Approx. 30.1 sq. metres (323.9 sq. feet)



Lounge/Dining Room

5.00m (16'5")
x 3.98m (13'1") max

WC

Hall

Kitchen

2.46m x 2.70m
(8'1" x 8'10")

Total area: approx. 60.2 sq. metres (647.7 sq. feet)

For illustrative purposes only. Not to scale. All sizes are approximate.

Plan produced using PlanUp.

First Floor

Approx. 30.1 sq. metres (323.9 sq. feet)

Storage

Bedroom 2

2.72m x 2.90m
(8'11" x 9'6")

Landing

Bathroom

2.02m x 1.90m
(6'8" x 6'3")

**Master
Bedroom**

3.39m (11'1")
x 2.88m (9'5") max

En-suite

2.26m x 1.00m
(7'5" x 3'3")

