

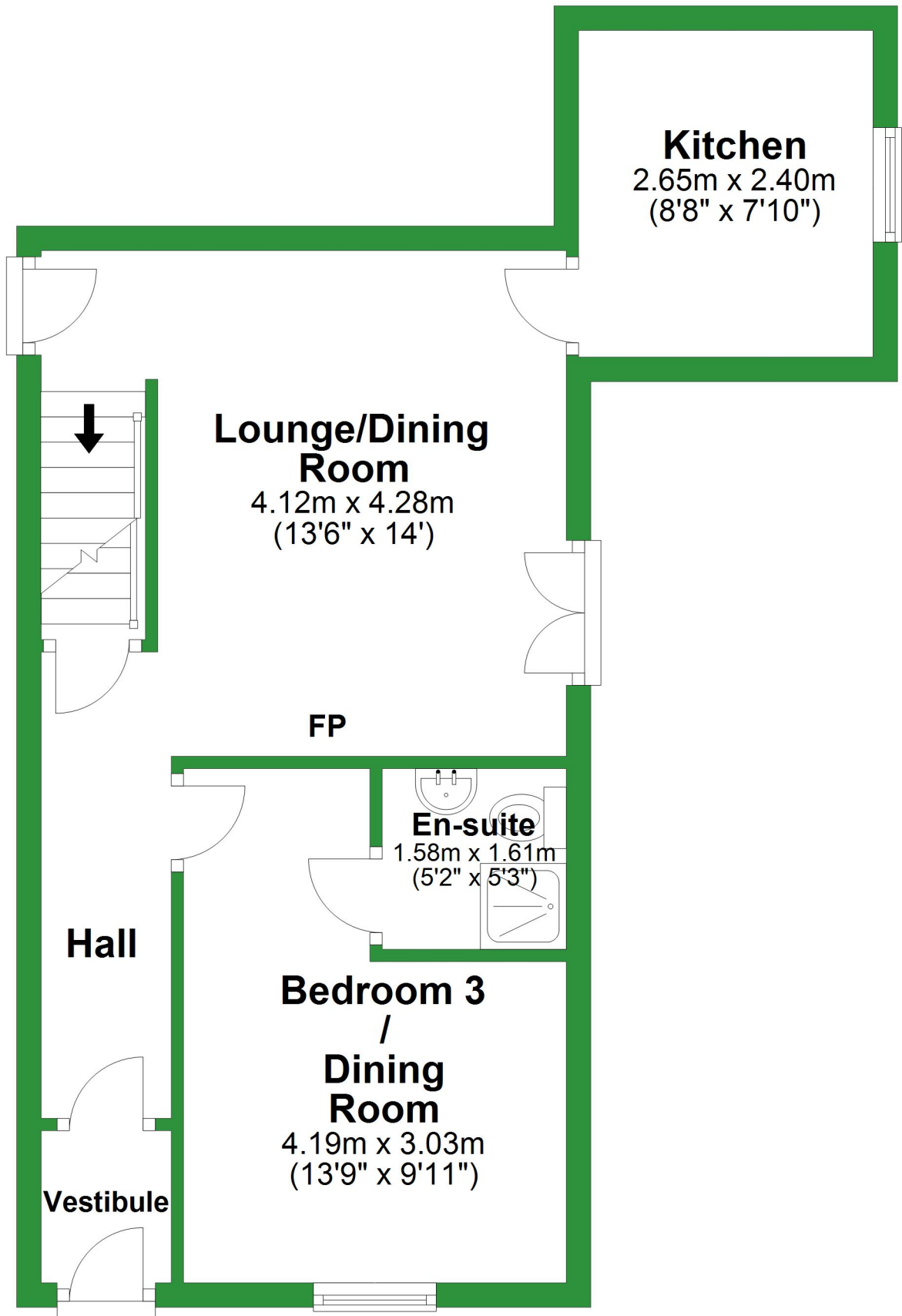
Total area: approx. 108.8 sq. metres (1170.8 sq. feet)

For illustrative purposes only. Not to scale. All sizes are approximate.

Plan produced using PlanUp.

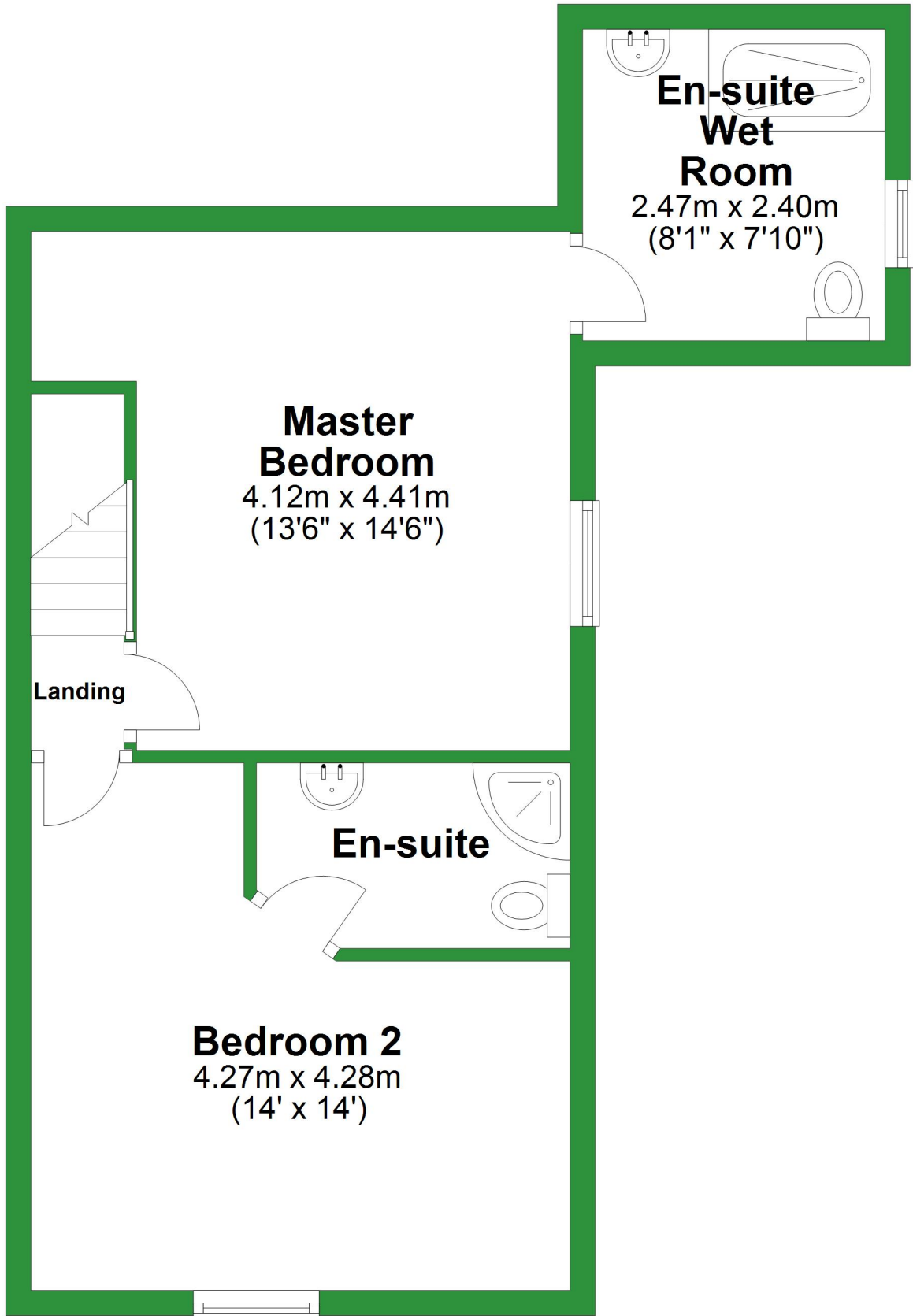
# Ground Floor

Approx. 42.1 sq. metres (453.6 sq. feet)



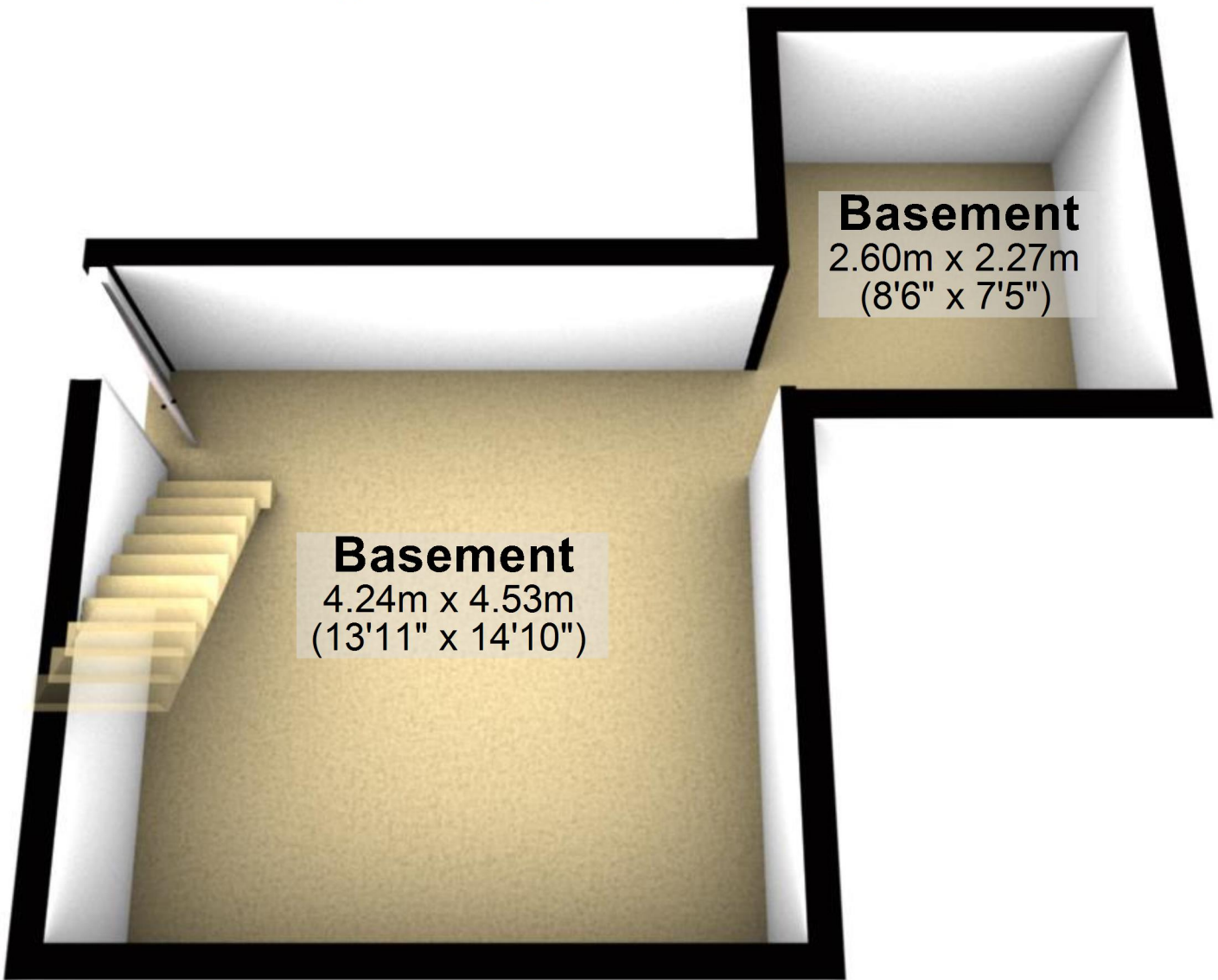
# First Floor

Approx. 42.0 sq. metres (452.2 sq. feet)



# Basement

Approx. 24.6 sq. metres (265.0 sq. feet)



**Basement**  
2.60m x 2.27m  
(8'6" x 7'5")

**Basement**  
4.24m x 4.53m  
(13'11" x 14'10")

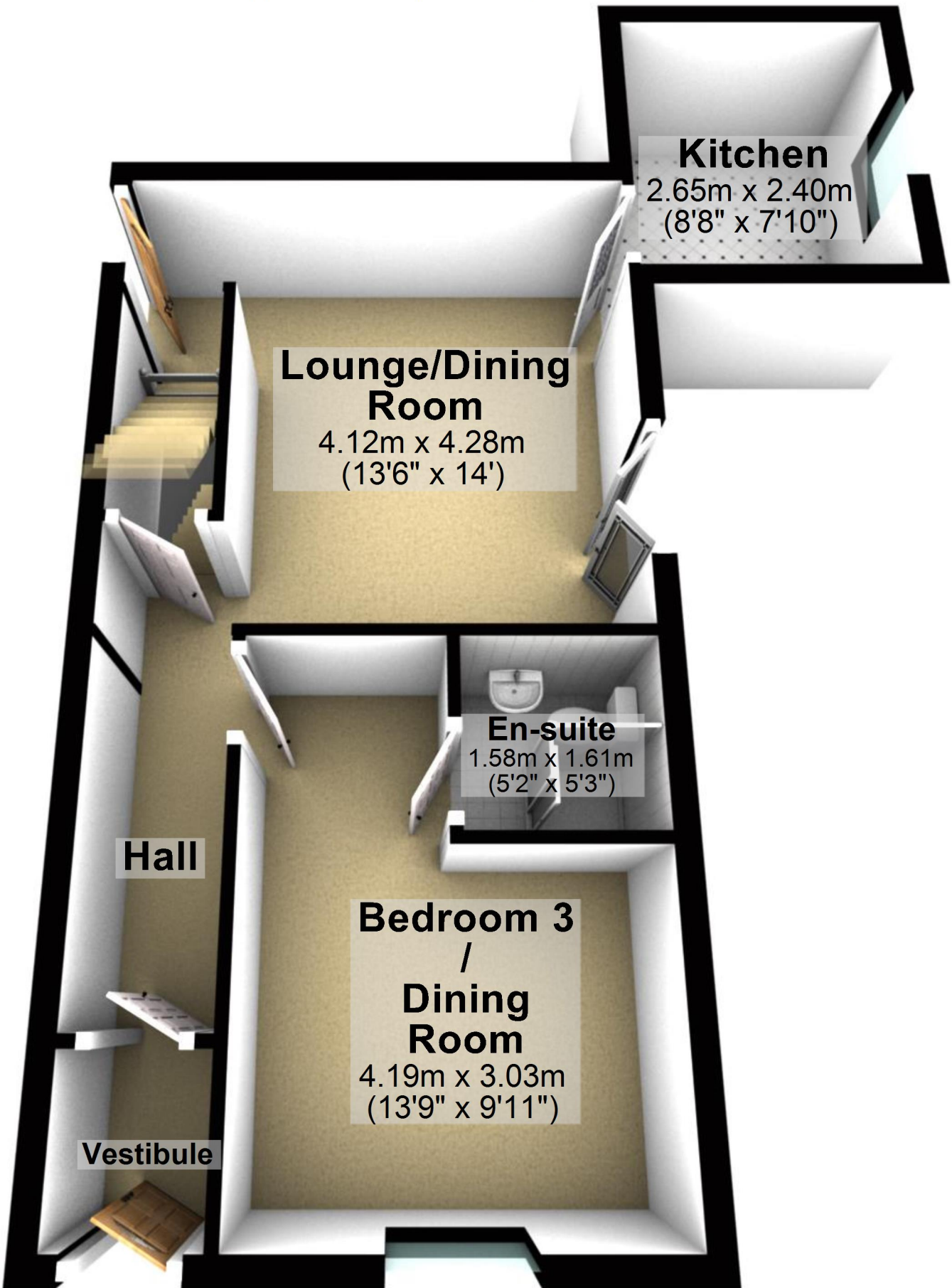
Total area: approx. 108.8 sq. metres (1170.8 sq. feet)

For illustrative purposes only. Not to scale. All sizes are approximate.

Plan produced using PlanUp.

# Ground Floor

Approx. 42.1 sq. metres (453.6 sq. feet)



## Kitchen

2.65m x 2.40m  
(8'8" x 7'10")

## Lounge/Dining Room

4.12m x 4.28m  
(13'6" x 14')

## En-suite

1.58m x 1.61m  
(5'2" x 5'3")

## Hall

## Bedroom 3

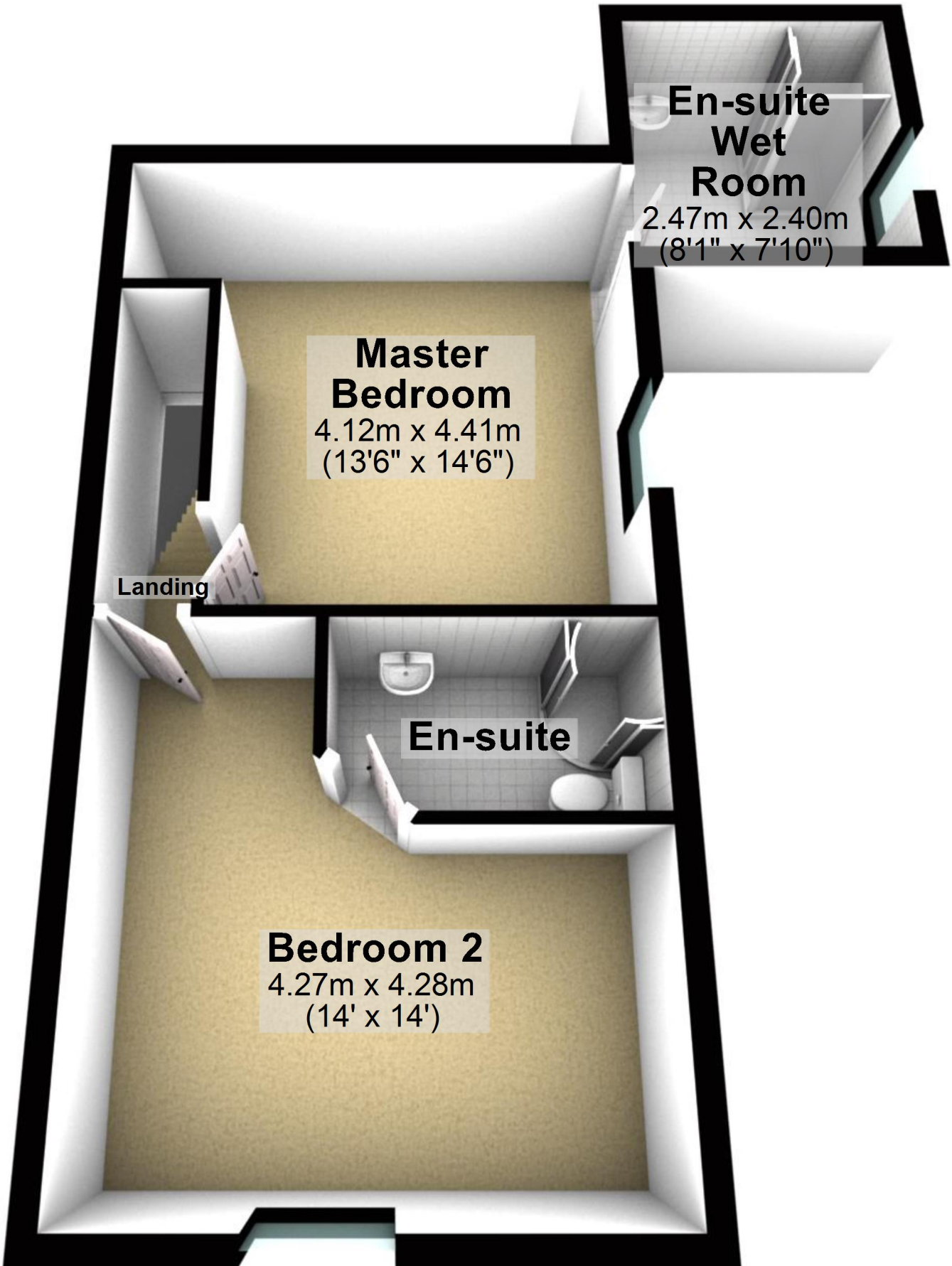
## / Dining Room

4.19m x 3.03m  
(13'9" x 9'11")

## Vestibule

# First Floor

Approx. 42.0 sq. metres (452.2 sq. feet)



**En-suite  
Wet  
Room**

2.47m x 2.40m  
(8'1" x 7'10")

**Master  
Bedroom**

4.12m x 4.41m  
(13'6" x 14'6")

Landing

**En-suite**

**Bedroom 2**

4.27m x 4.28m  
(14' x 14')