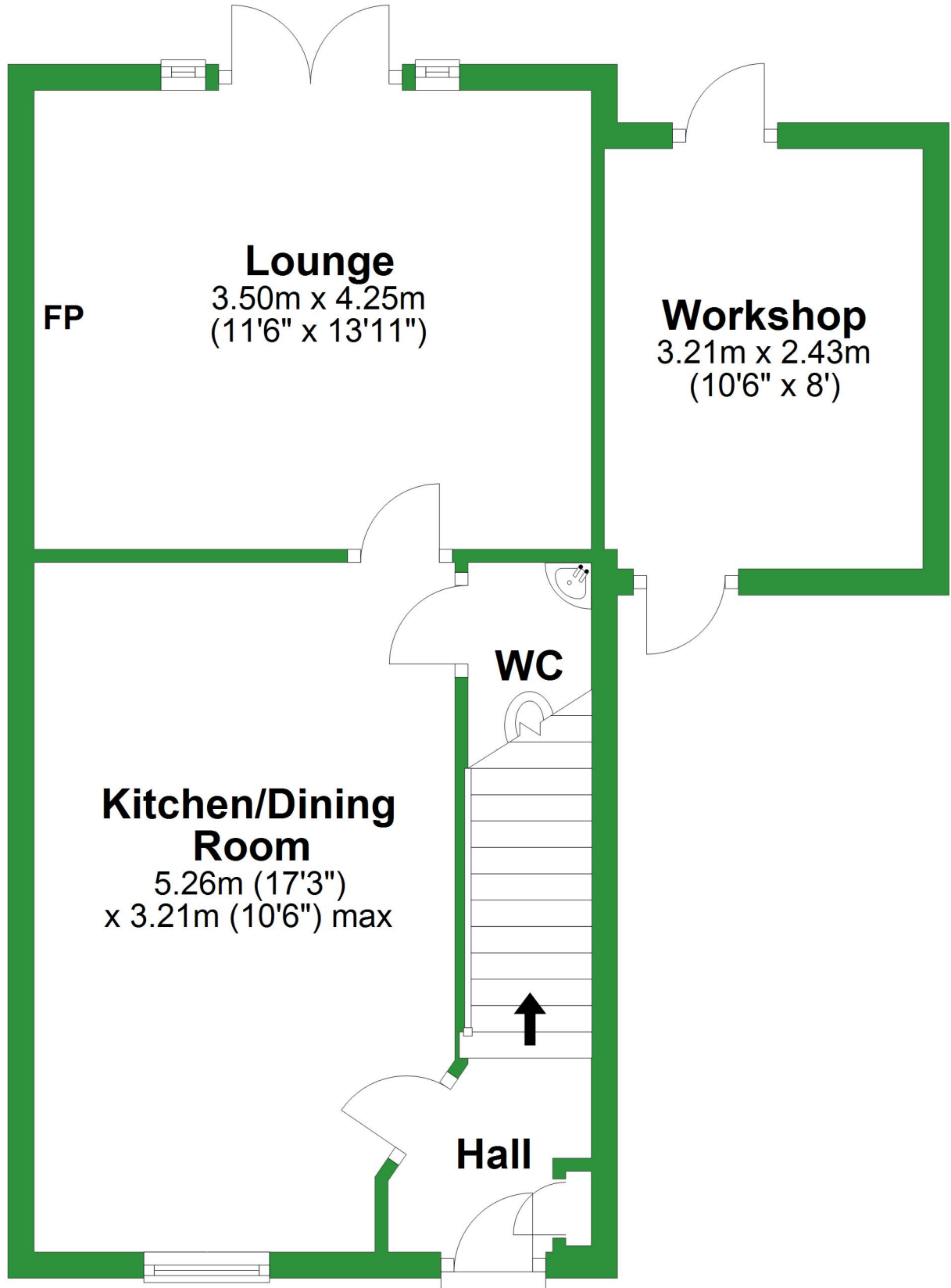


# Ground Floor

Approx. 45.8 sq. metres (492.7 sq. feet)



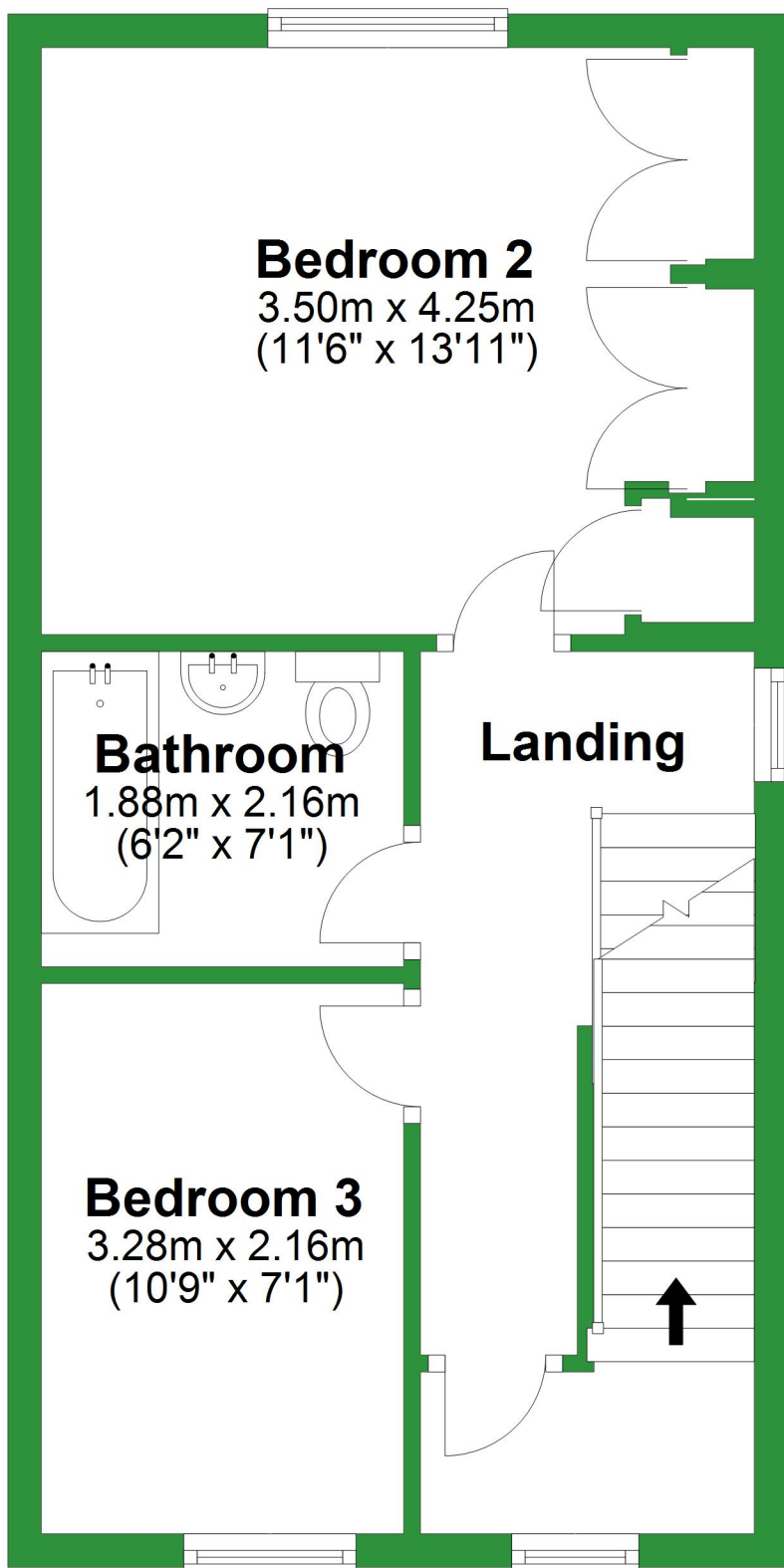
Total area: approx. 112.7 sq. metres (1213.6 sq. feet)

For illustrative purposes only. Not to scale. All sizes are approximate.

Plan produced using PlanUp.

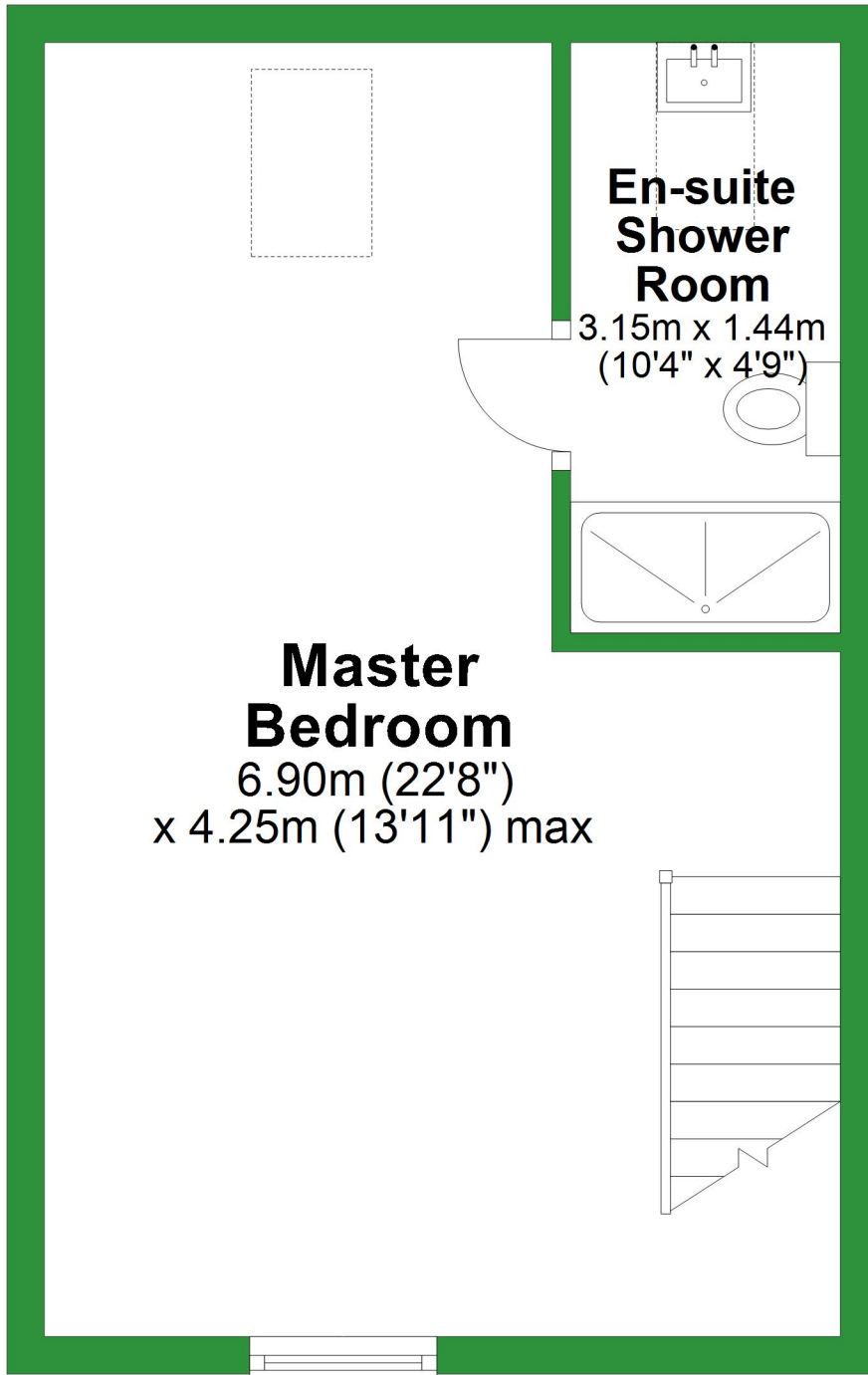
# First Floor

Approx. 37.7 sq. metres (405.3 sq. feet)



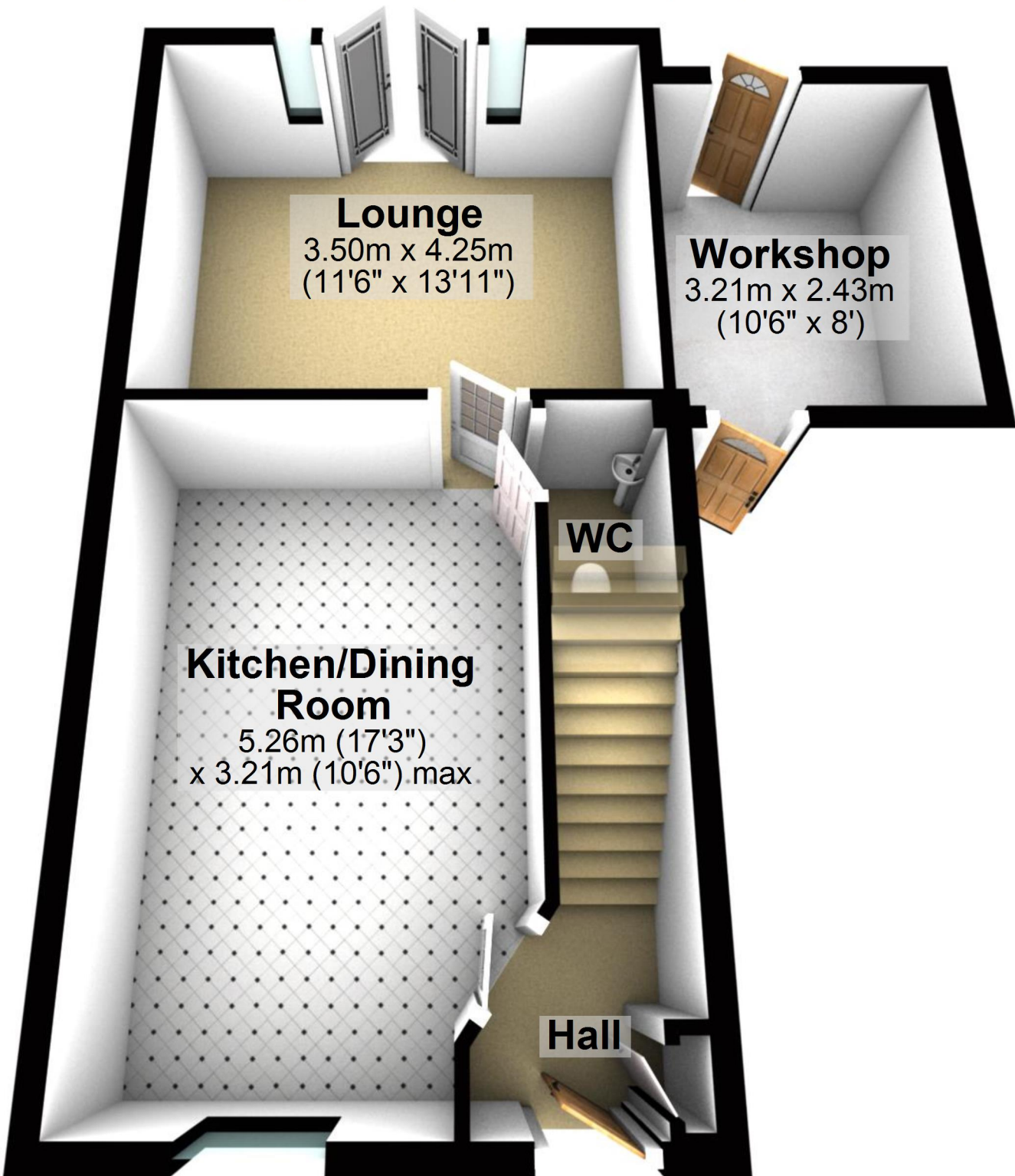
# Second Floor

Approx. 29.3 sq. metres (315.5 sq. feet)



# Ground Floor

Approx. 45.8 sq. metres (492.7 sq. feet)



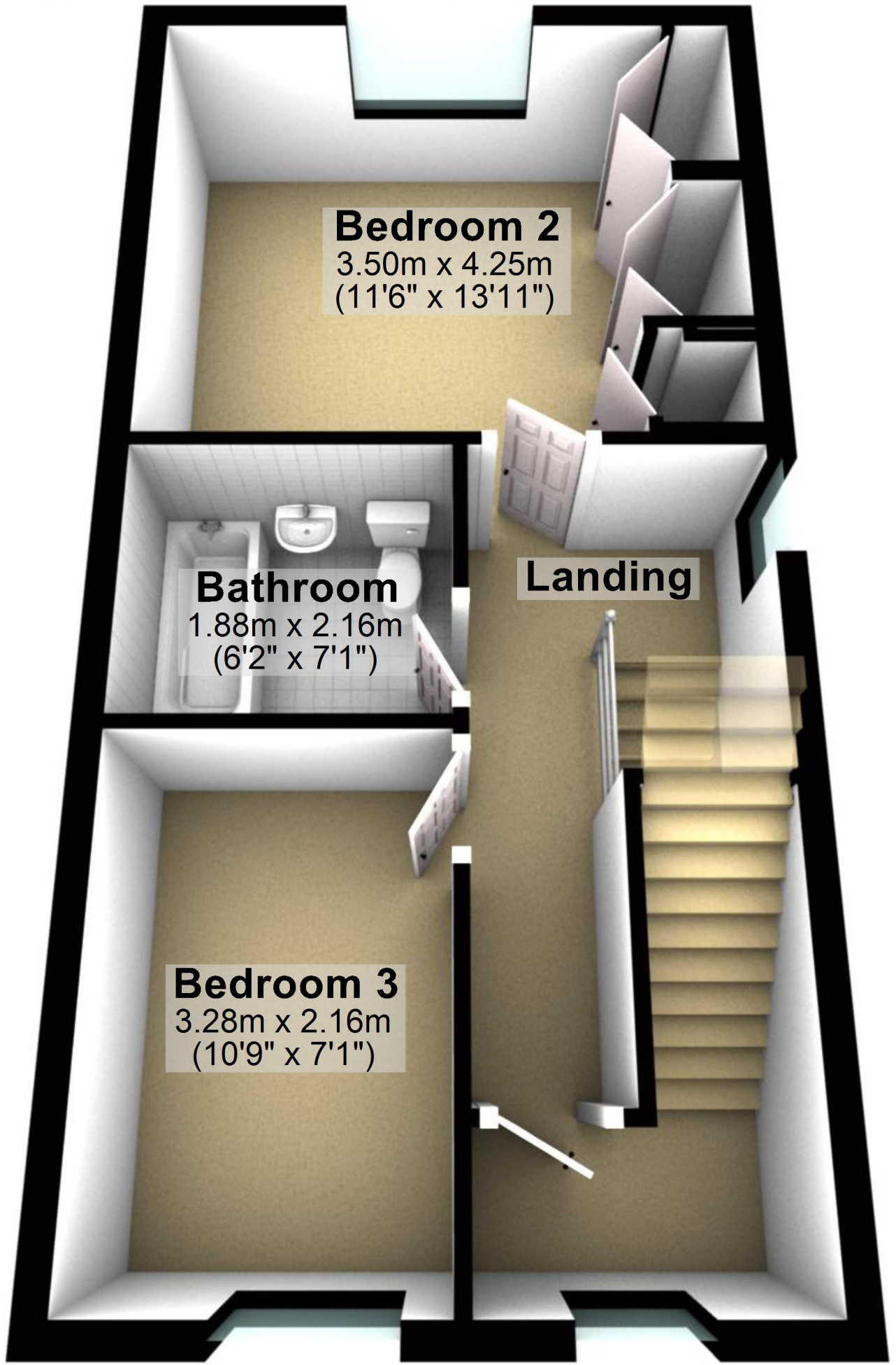
Total area: approx. 112.7 sq. metres (1213.6 sq. feet)

For illustrative purposes only. Not to scale. All sizes are approximate.

Plan produced using PlanUp.

# First Floor

Approx. 37.7 sq. metres (405.3 sq. feet)



## Bedroom 2

3.50m x 4.25m  
(11'6" x 13'11")

## Bathroom

1.88m x 2.16m  
(6'2" x 7'1")

## Landing

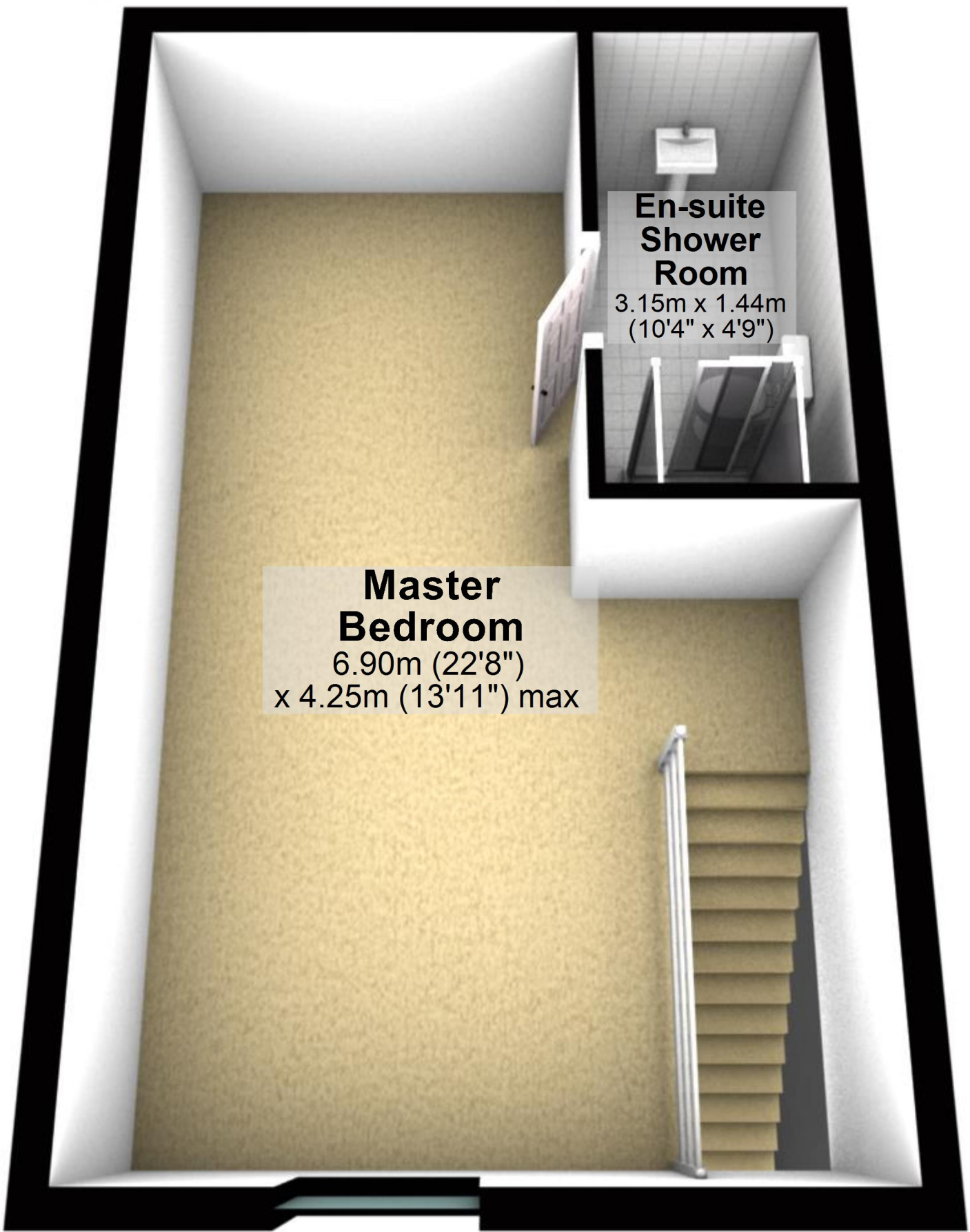
## Bedroom 3

3.28m x 2.16m  
(10'9" x 7'1")



# Second Floor

Approx. 29.3 sq. metres (315.5 sq. feet)



## En-suite Shower Room

3.15m x 1.44m  
(10'4" x 4'9")

## Master Bedroom

6.90m (22'8")  
x 4.25m (13'11") max