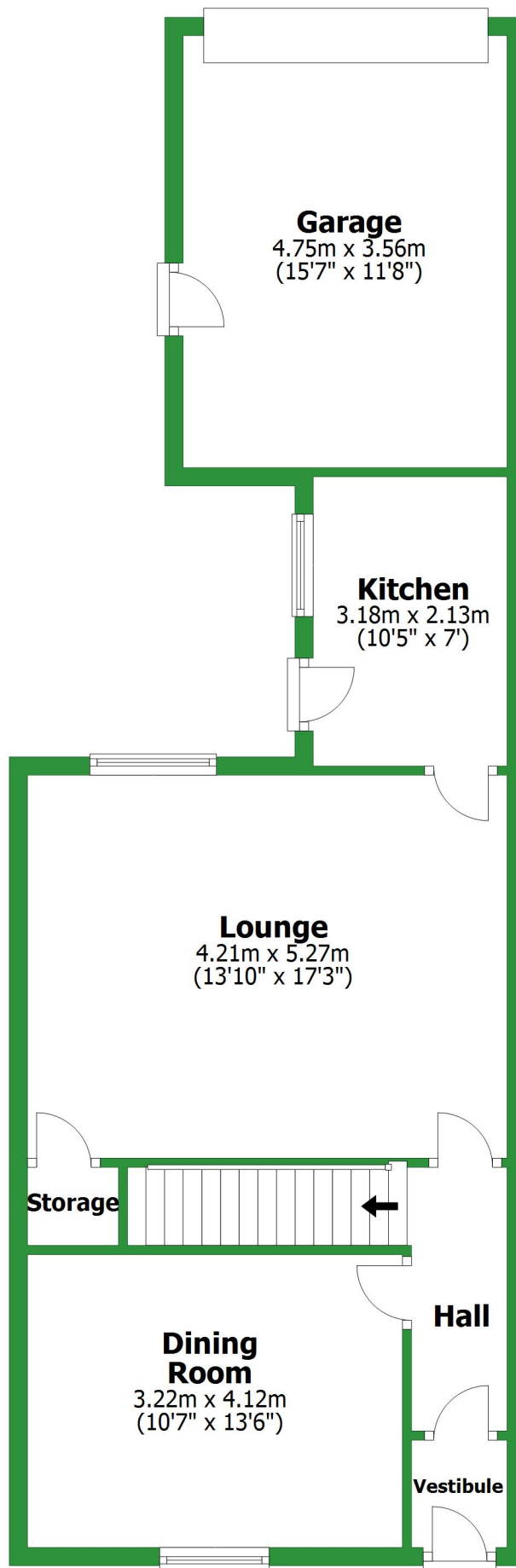


Ground Floor

Approx. 68.9 sq. metres (741.1 sq. feet)

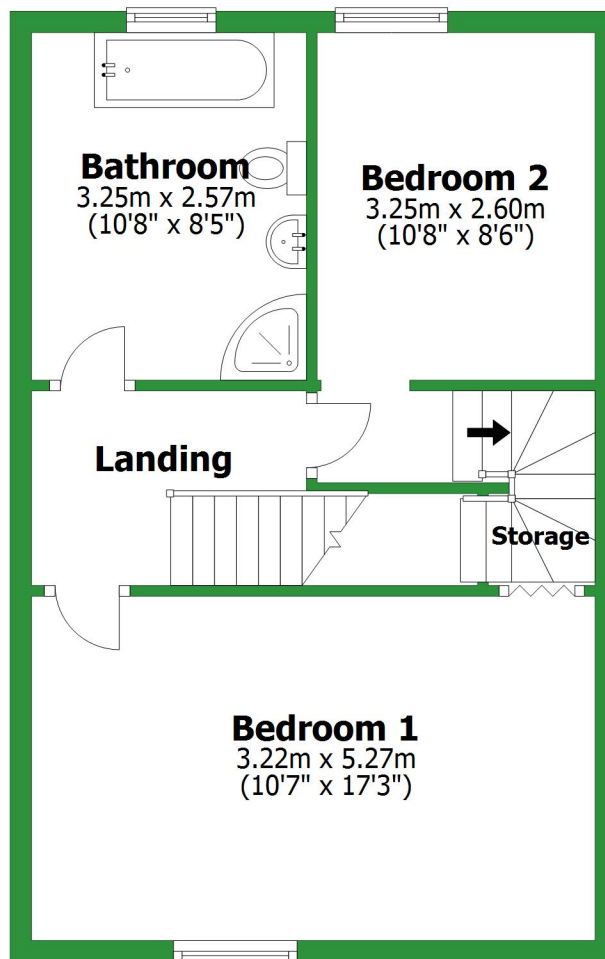


Total area: approx. 128.4 sq. metres (1381.8 sq. feet)

For illustrative purposes only. Not to scale. All sizes are approximate.
Plan produced using PlanUp.

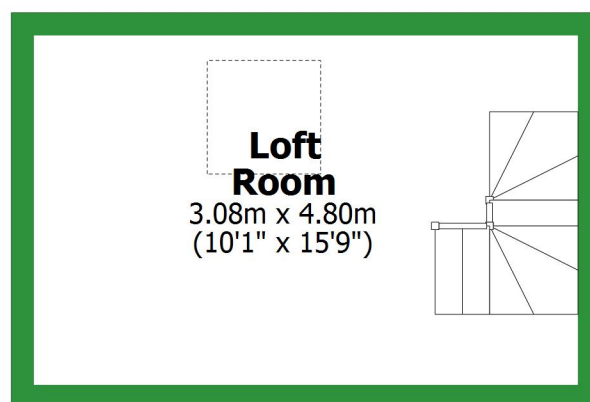
First Floor

Approx. 44.7 sq. metres (481.6 sq. feet)



Second Floor

Approx. 14.8 sq. metres (159.1 sq. feet)



Ground Floor

Approx. 68.9 sq. metres (741.1 sq. feet)

Garage

4.75m x 3.56m
(15'7" x 11'8")

Kitchen

3.18m x 2.13m
(10'5" x 7')

Lounge

4.21m x 5.27m
(13'10" x 17'3")

Storage

Dining Room

3.22m x 4.12m
(10'7" x 13'6")

Hall

Vestibule

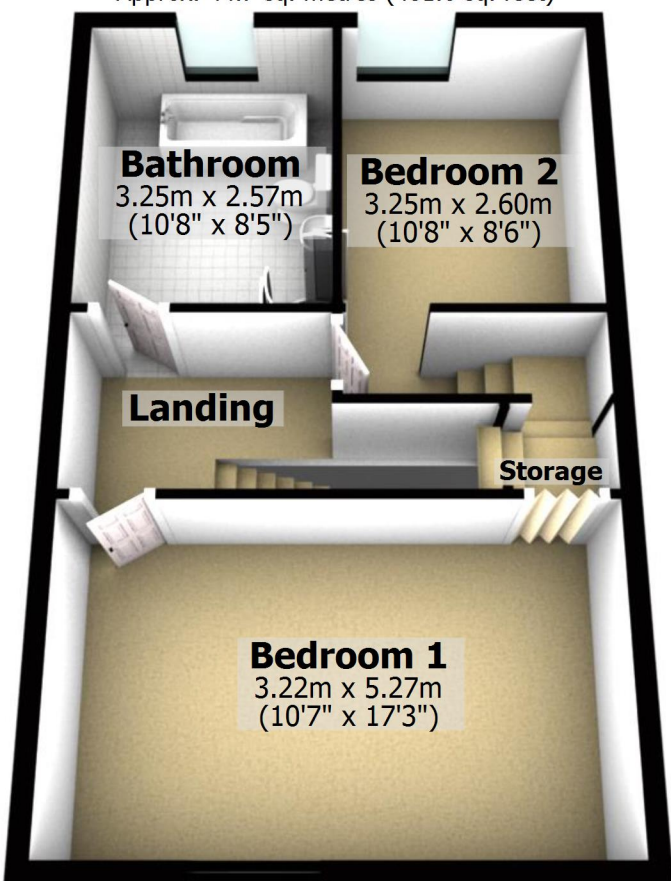
Total area: approx. 128.4 sq. metres (1381.8 sq. feet)

For illustrative purposes only. Not to scale. All sizes are approximate.

Plan produced using PlanUp.

First Floor

Approx. 44.7 sq. metres (481.6 sq. feet)



Second Floor

Approx. 14.8 sq. metres (159.1 sq. feet)

Loft Room

3.08m x 4.80m
(10'1" x 15'9")

