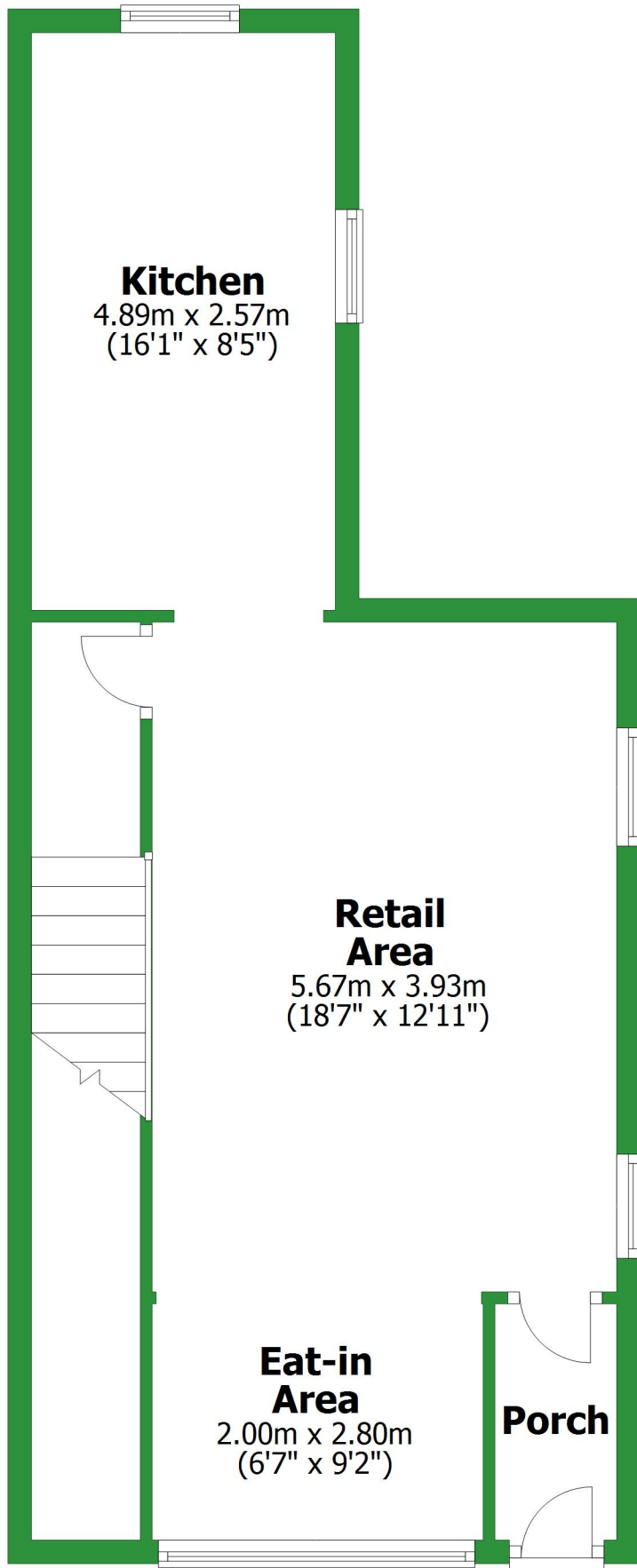


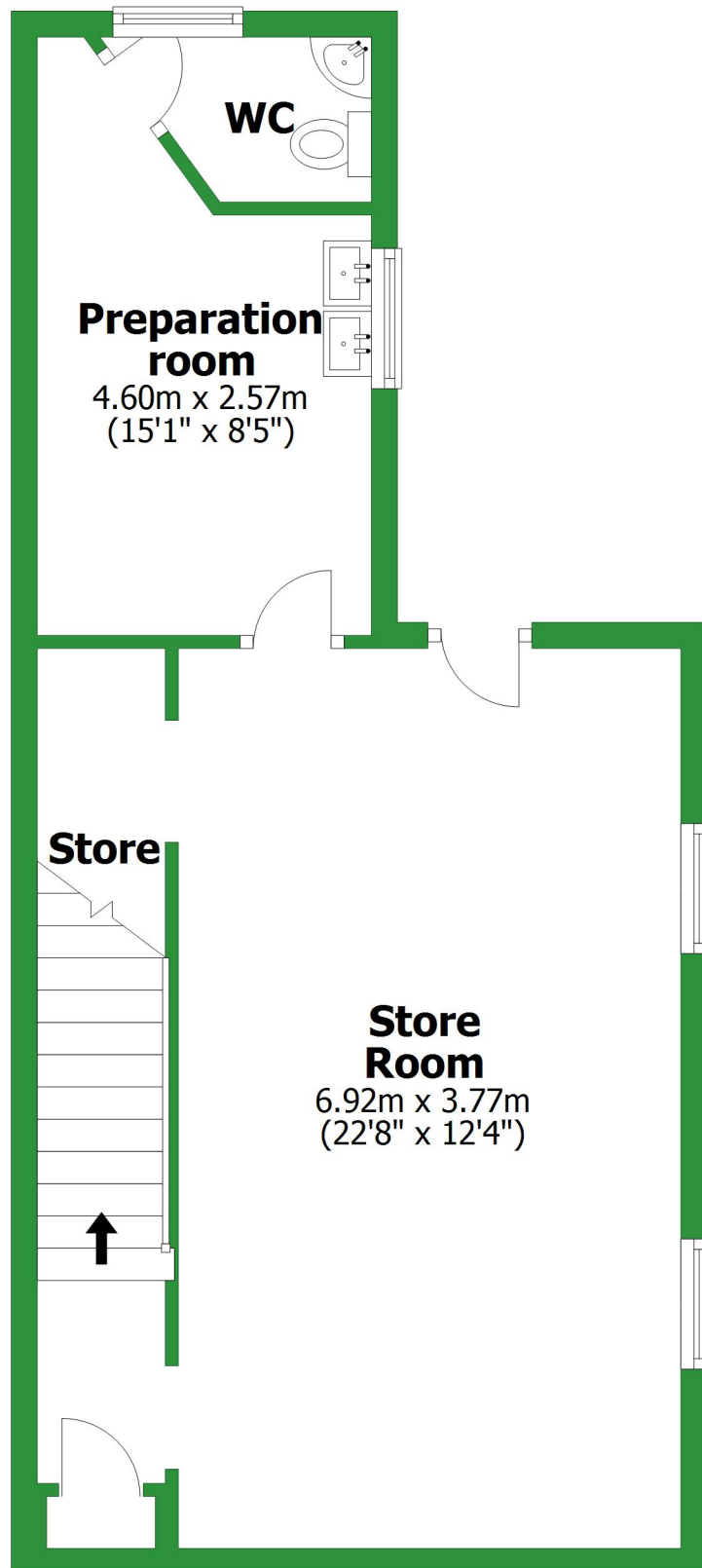
Ground Floor

Approx. 51.3 sq. metres (552.0 sq. feet)



Basement

Approx. 46.3 sq. metres (498.7 sq. feet)



Total area: approx. 97.6 sq. metres (1050.8 sq. feet)

For illustrative purposes only. Not to scale. All sizes are approximate.
Plan produced using PlanUp.

Ground Floor

Approx. 51.3 sq. metres (552.0 sq. feet)

Kitchen

4.89m x 2.57m
(16'1" x 8'5")

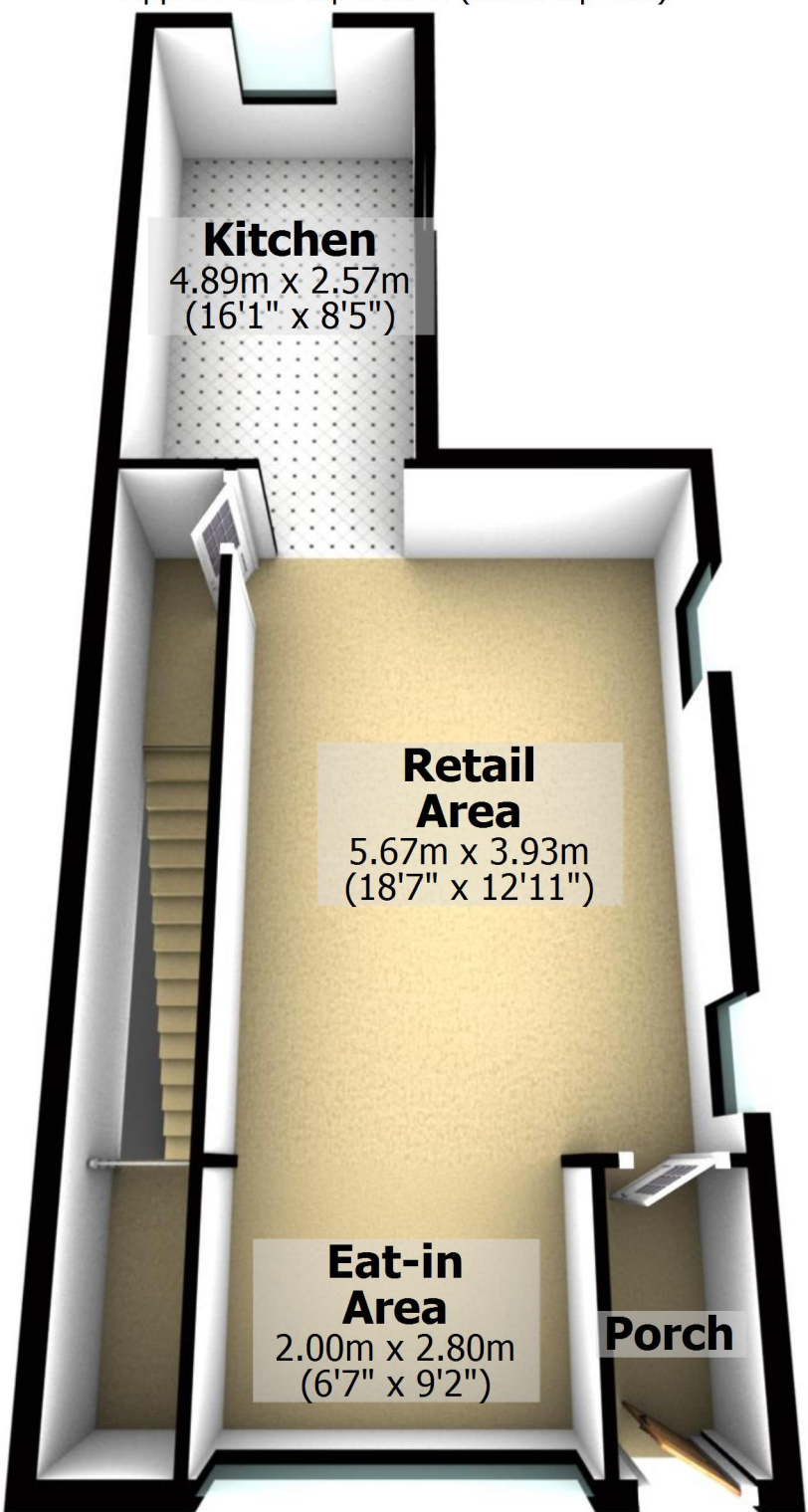
Retail Area

5.67m x 3.93m
(18'7" x 12'11")

Eat-in Area

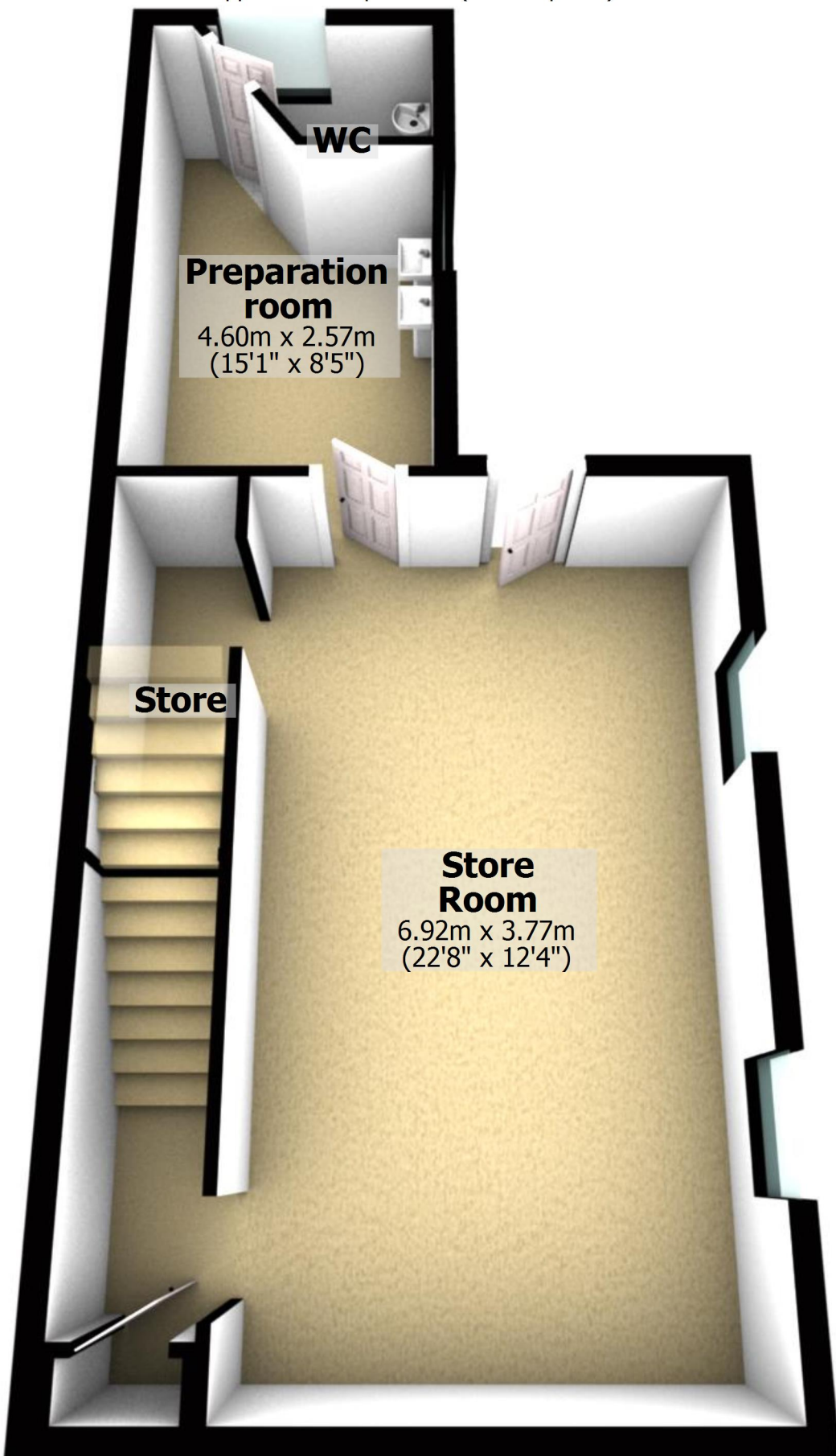
2.00m x 2.80m
(6'7" x 9'2")

Porch



Basement

Approx. 46.3 sq. metres (498.7 sq. feet)



Total area: approx. 97.6 sq. metres (1050.8 sq. feet)

For illustrative purposes only. Not to scale. All sizes are approximate.

Plan produced using PlanUp.