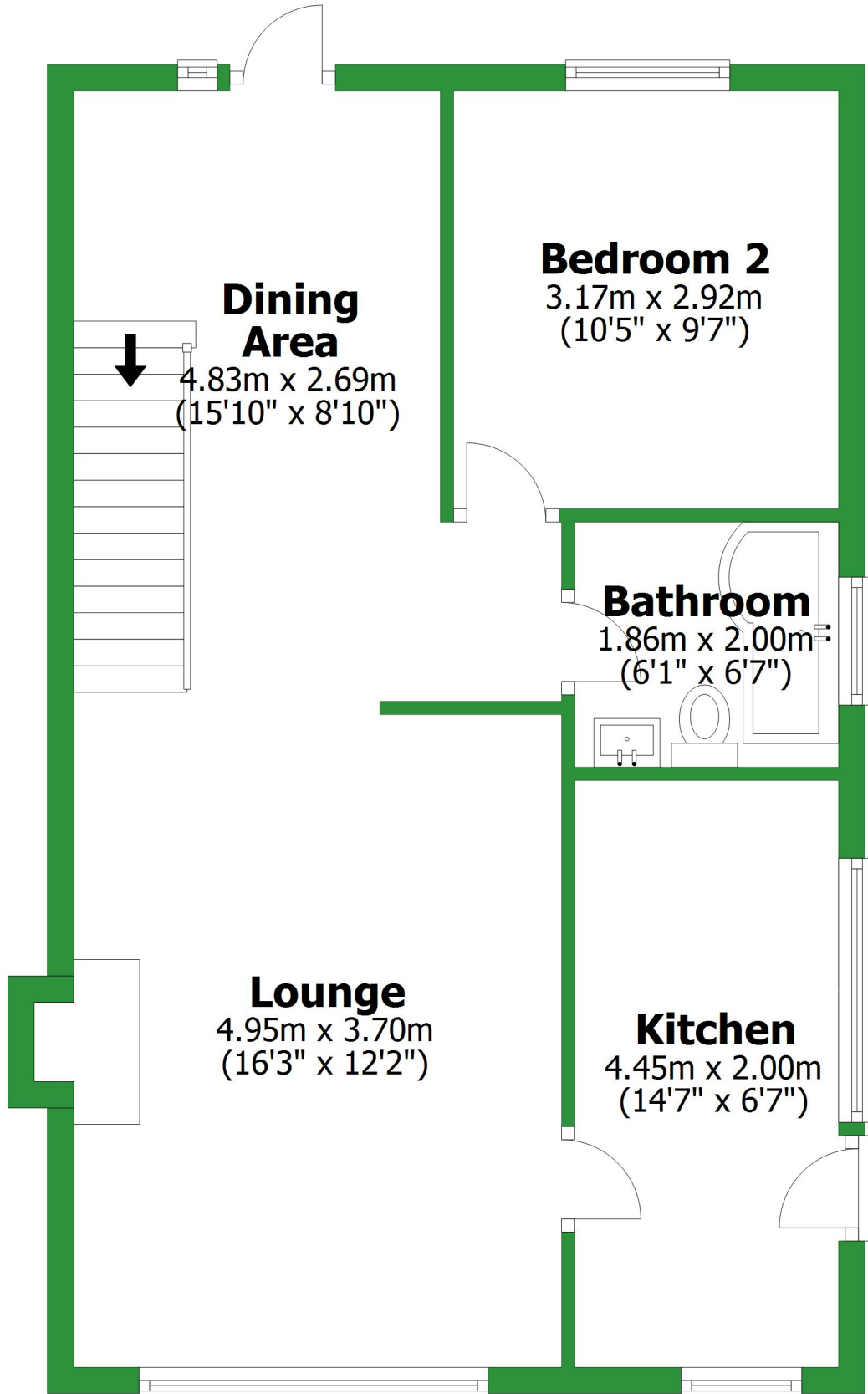


# Ground Floor

Approx. 56.1 sq. metres (604.3 sq. feet)



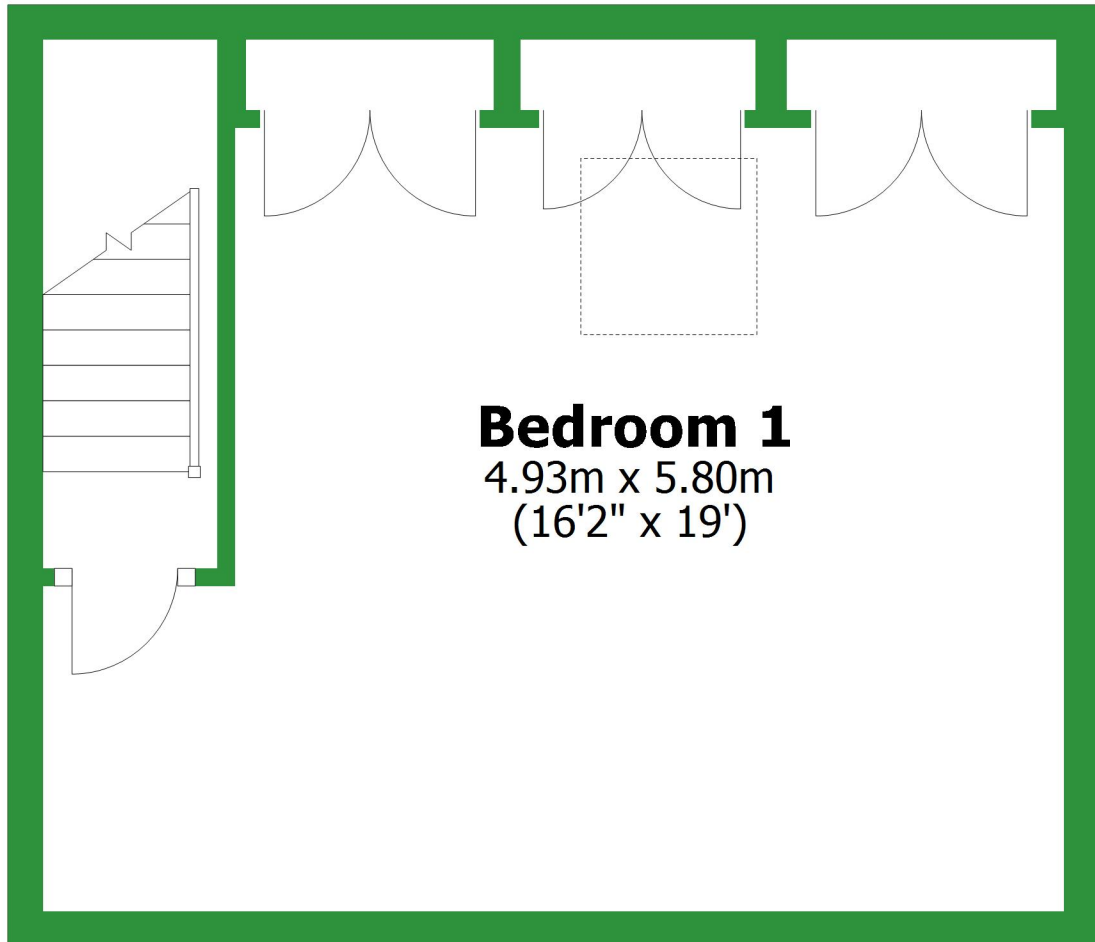
Total area: approx. 84.8 sq. metres (912.7 sq. feet)

For illustrative purposes only. Not to scale. All sizes are approximate.

Plan produced using PlanUp.

# First Floor

Approx. 28.7 sq. metres (308.4 sq. feet)

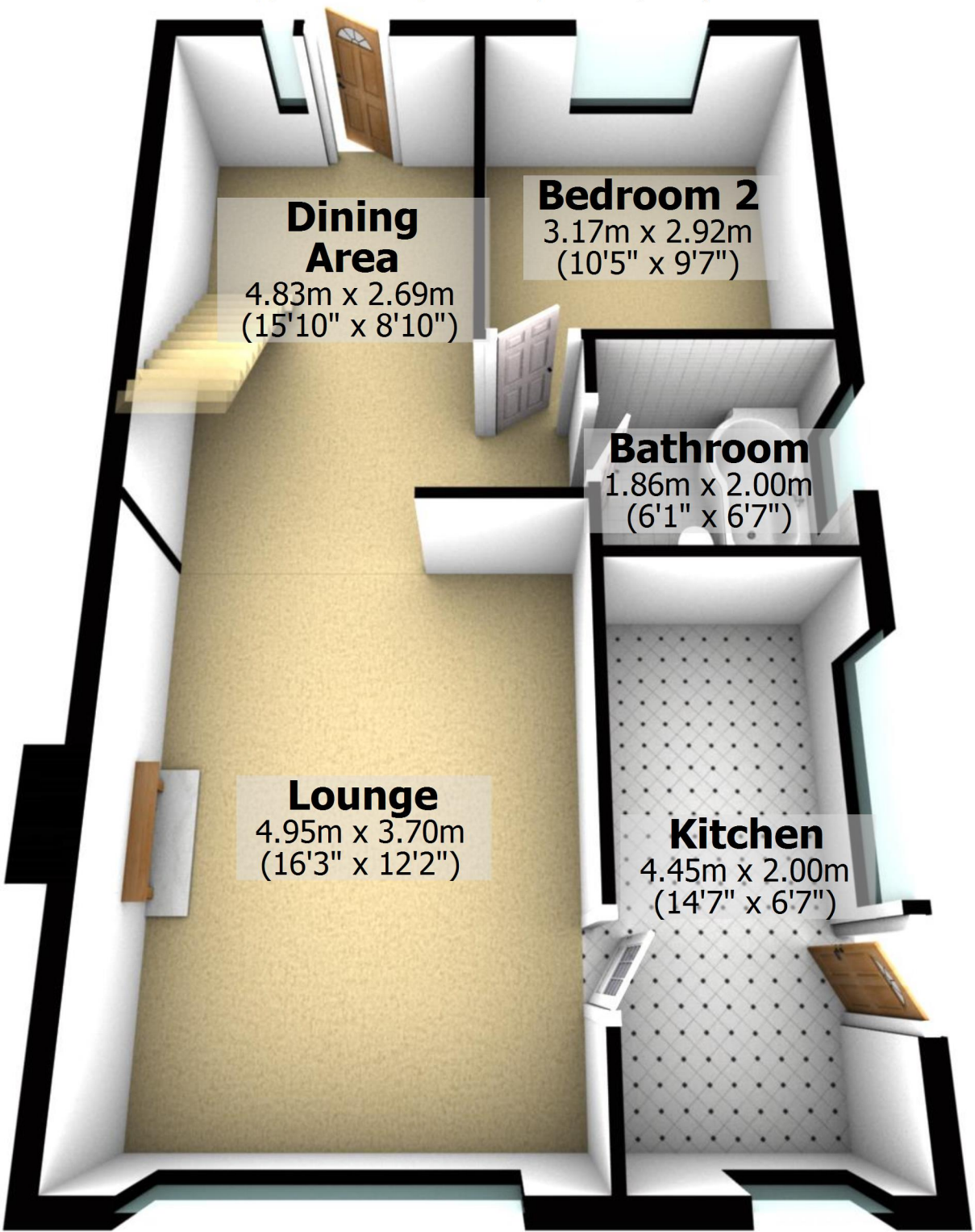


## Bedroom 1

4.93m x 5.80m  
(16'2" x 19')

# Ground Floor

Approx. 56.1 sq. metres (604.3 sq. feet)



## Dining Area

4.83m x 2.69m  
(15'10" x 8'10")

## Bedroom 2

3.17m x 2.92m  
(10'5" x 9'7")

## Bathroom

1.86m x 2.00m  
(6'1" x 6'7")

## Lounge

4.95m x 3.70m  
(16'3" x 12'2")

## Kitchen

4.45m x 2.00m  
(14'7" x 6'7")

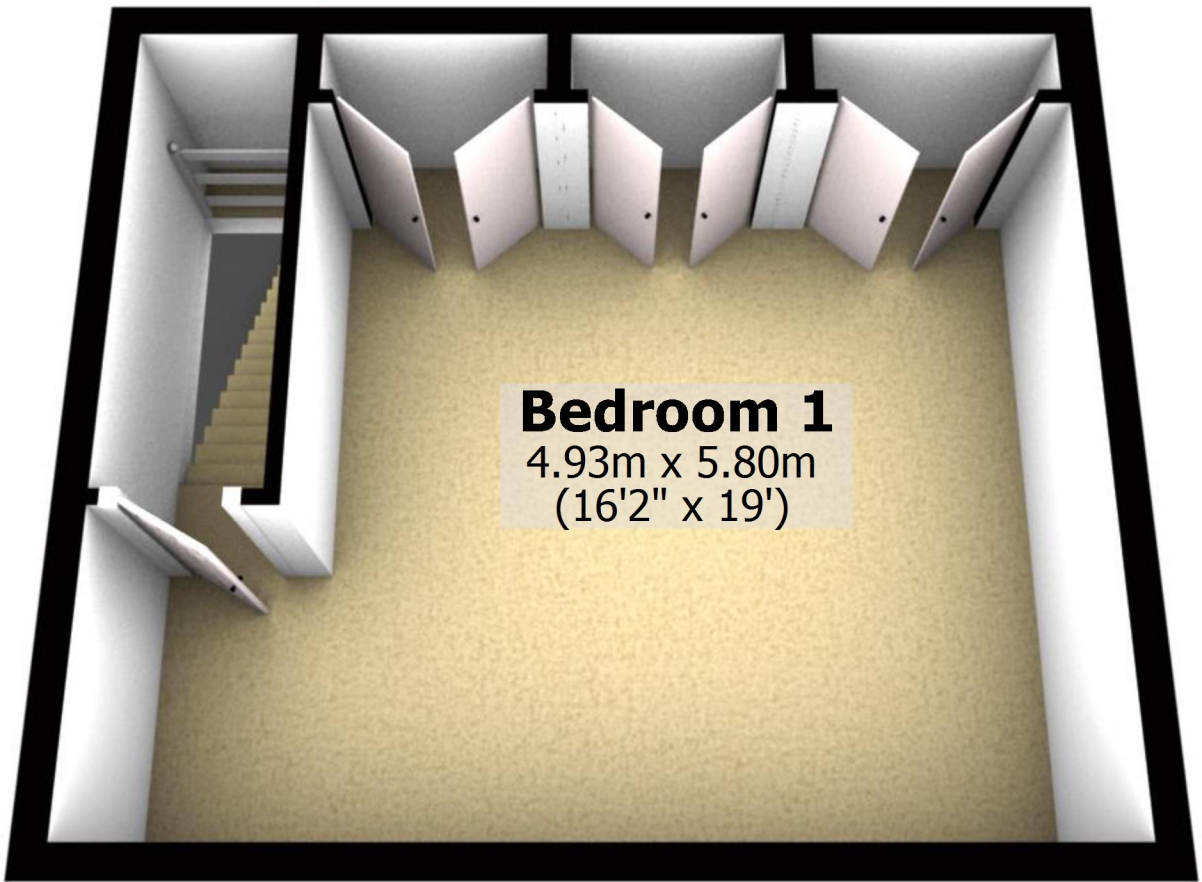
Total area: approx. 84.8 sq. metres (912.7 sq. feet)

For illustrative purposes only. Not to scale. All sizes are approximate.

Plan produced using PlanUp.

# First Floor

Approx. 28.7 sq. metres (308.4 sq. feet)



## Bedroom 1

4.93m x 5.80m  
(16'2" x 19')