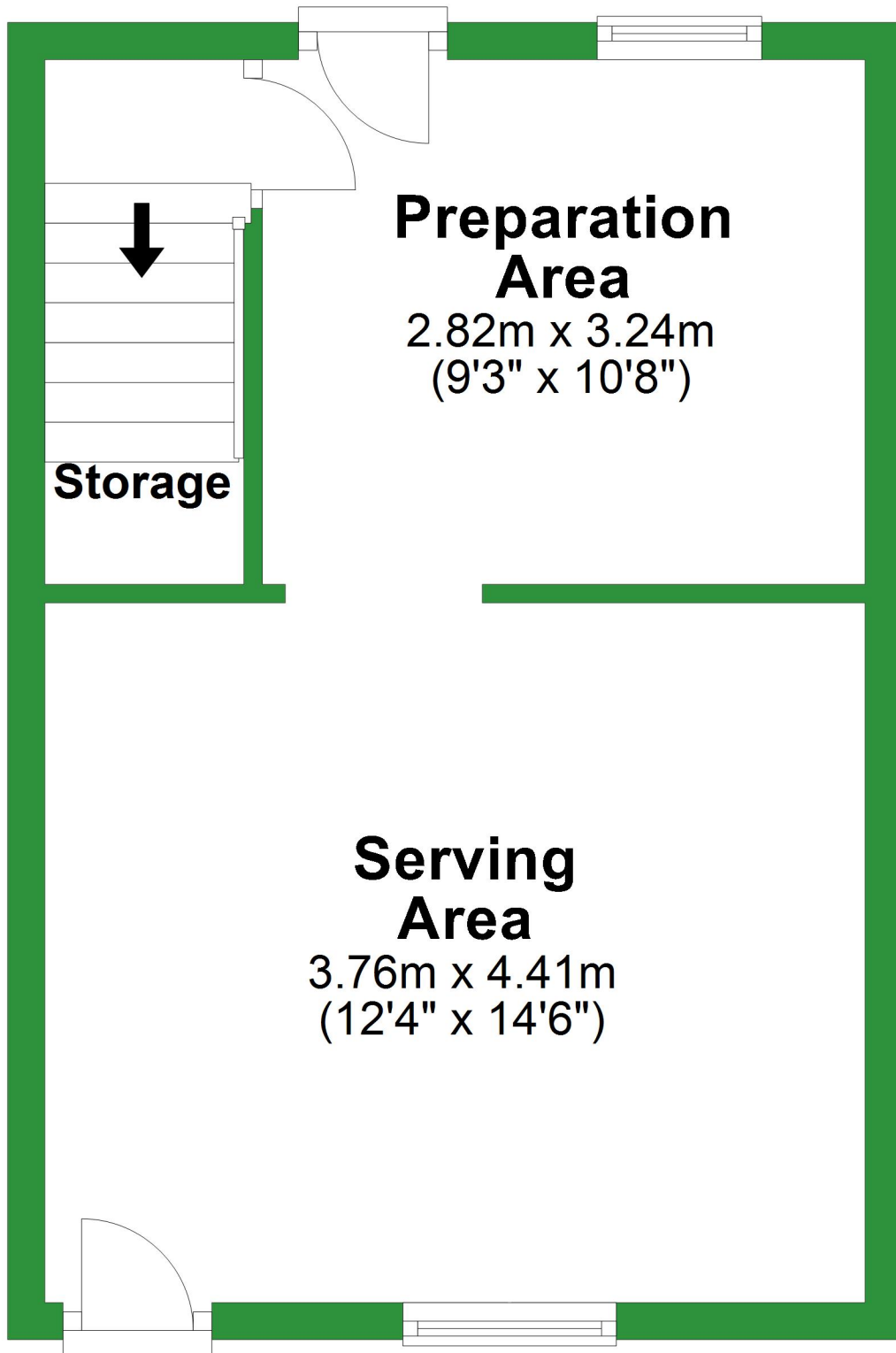


Ground Floor

Approx. 29.5 sq. metres (317.1 sq. feet)



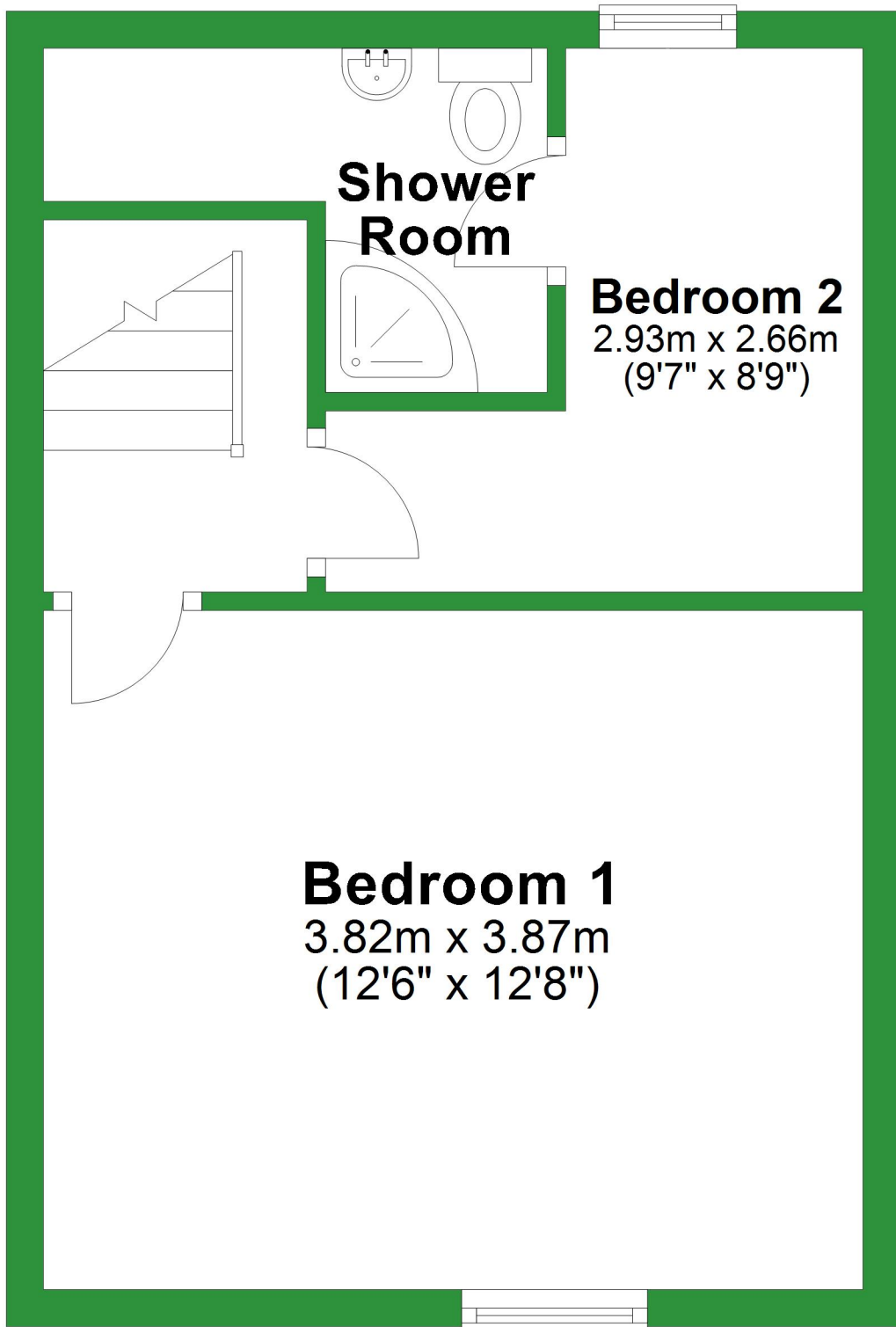
Total area: approx. 59.7 sq. metres (642.1 sq. feet)

For illustrative purposes only. Not to scale. All sizes are approximate.

Plan produced using PlanUp.

First Floor

Approx. 30.2 sq. metres (325.0 sq. feet)



Ground Floor

Approx. 29.5 sq. metres (317.1 sq. feet)

Preparation Area

2.82m x 3.24m
(9'3" x 10'8")

Storage

Serving Area

3.76m x 4.41m
(12'4" x 14'6")

Total area: approx. 59.7 sq. metres (642.1 sq. feet)

For illustrative purposes only. Not to scale. All sizes are approximate.

Plan produced using PlanUp.

First Floor

Approx. 30.2 sq. metres (325.0 sq. feet)



A 3D perspective rendering of a first-floor apartment layout. The floor is a light tan color. The walls are white. The ceiling is a white grid. The layout includes a large bedroom at the front, a smaller bedroom and a bathroom/shower area at the back. There are two doors leading to the bedrooms and one door leading to the bathroom. A small staircase is visible in the middle of the floor. The overall shape is rectangular with a small notch on the right side and a small protrusion on the left side.

**Shower
Room**

Bedroom 2
2.93m x 2.66m
(9'7" x 8'9")

Bedroom 1
3.82m x 3.87m
(12'6" x 12'8")