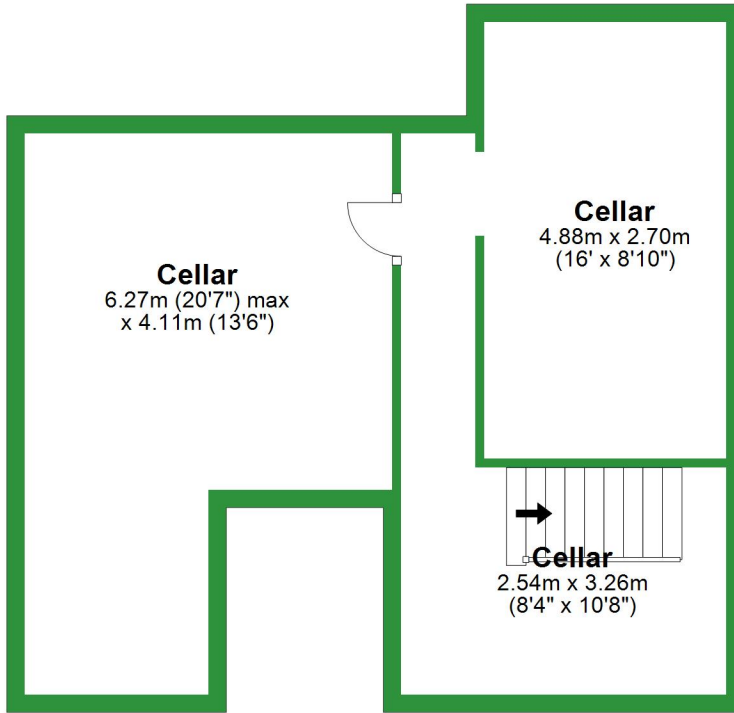


## Basement

Approx. 46.7 sq. metres (502.2 sq. feet)

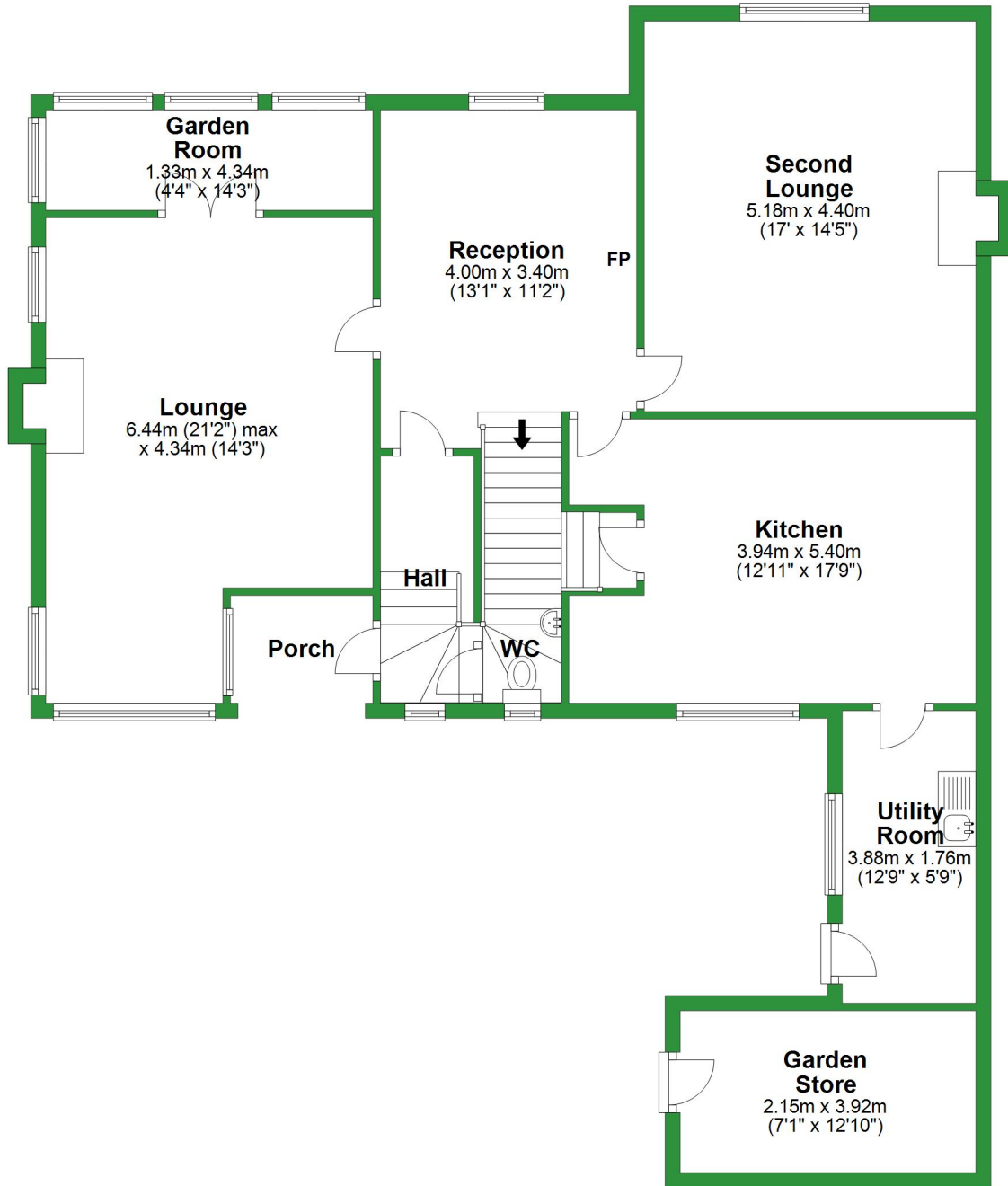


Total area: approx. 277.4 sq. metres (2985.5 sq. feet)

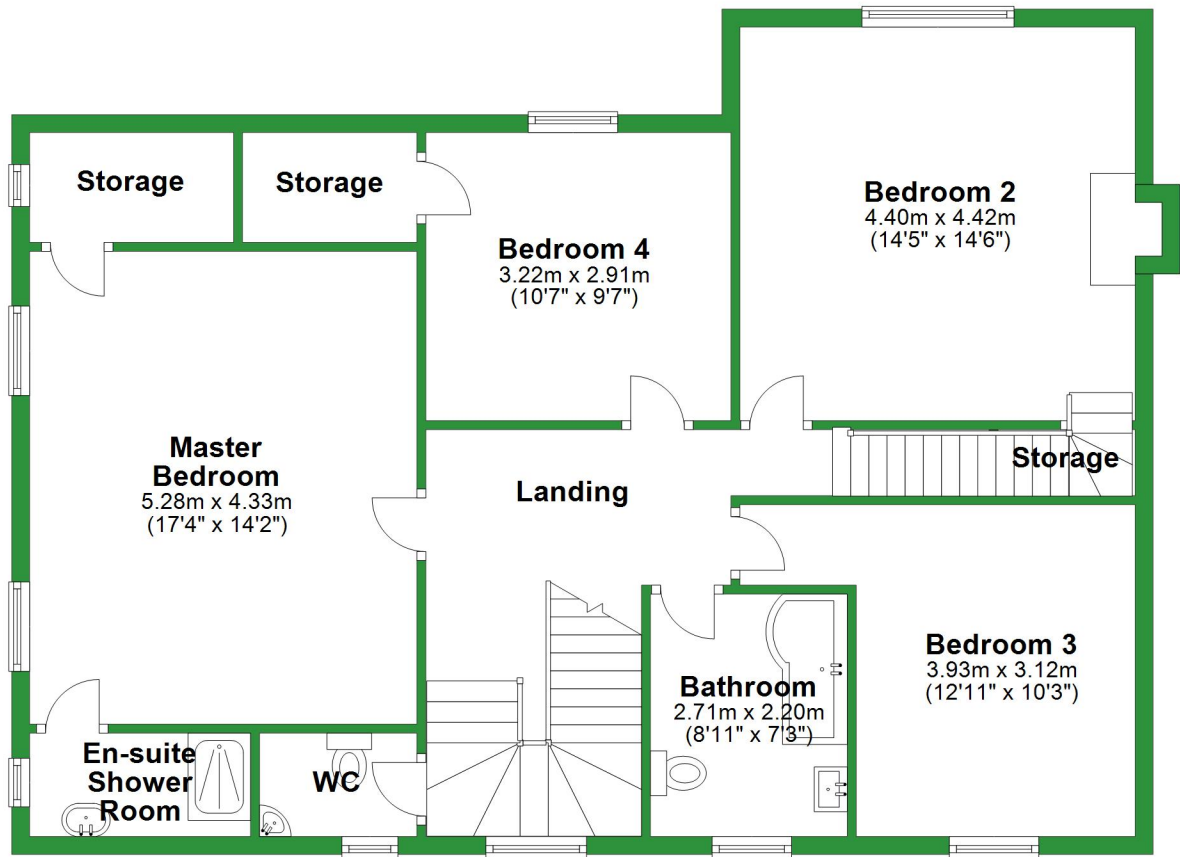
For illustrative purposes only. Not to scale. All sizes are approximate.  
Plan produced using PlanUp.

# Ground Floor

Approx. 109.4 sq. metres (1178.1 sq. feet)

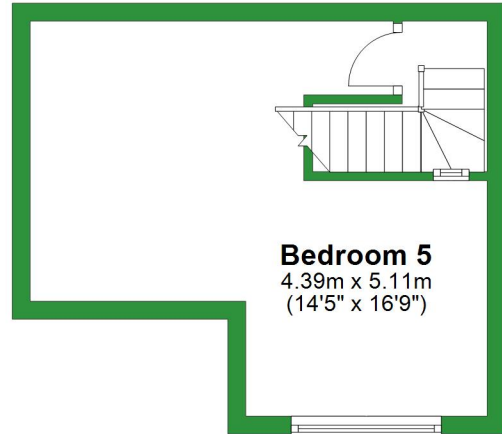


Approx. 101.8 sq. metres (1095.5 sq. feet)



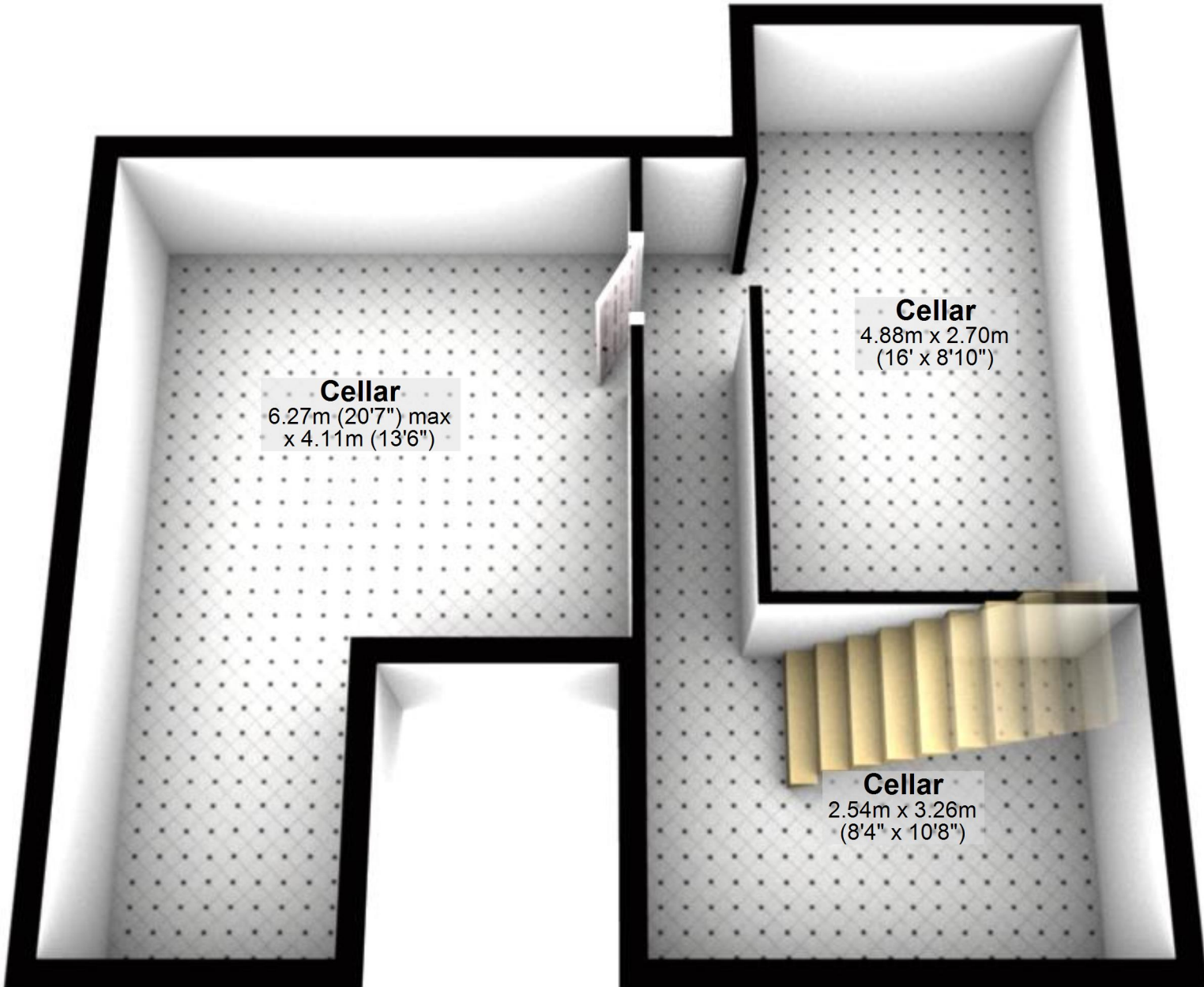
## Second Floor

Approx. 19.5 sq. metres (209.7 sq. feet)



## Basement

Approx. 46.7 sq. metres (502.2 sq. feet)

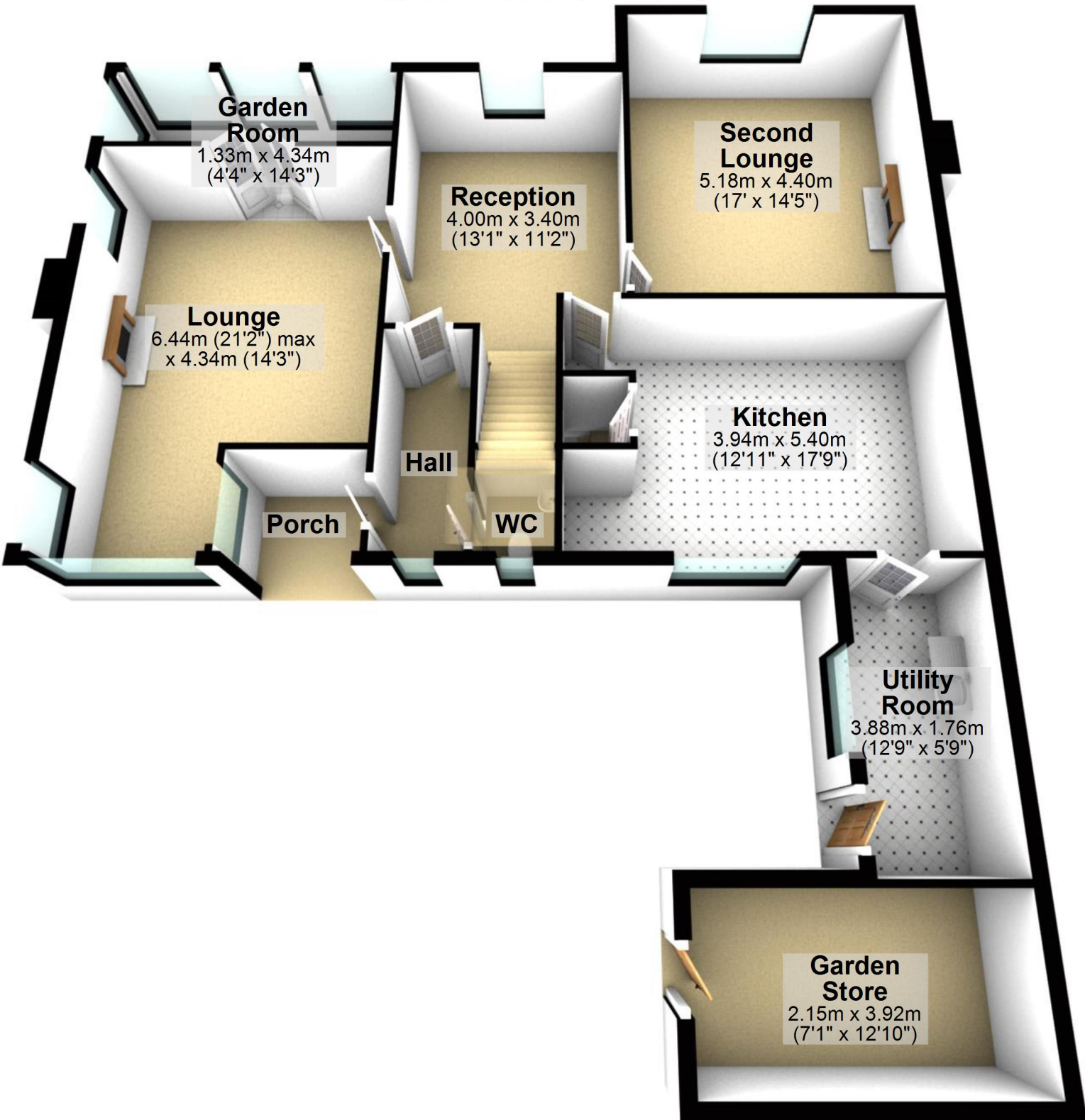


Total area: approx. 277.4 sq. metres (2985.5 sq. feet)

For illustrative purposes only. Not to scale. All sizes are approximate.  
Plan produced using PlanUp.

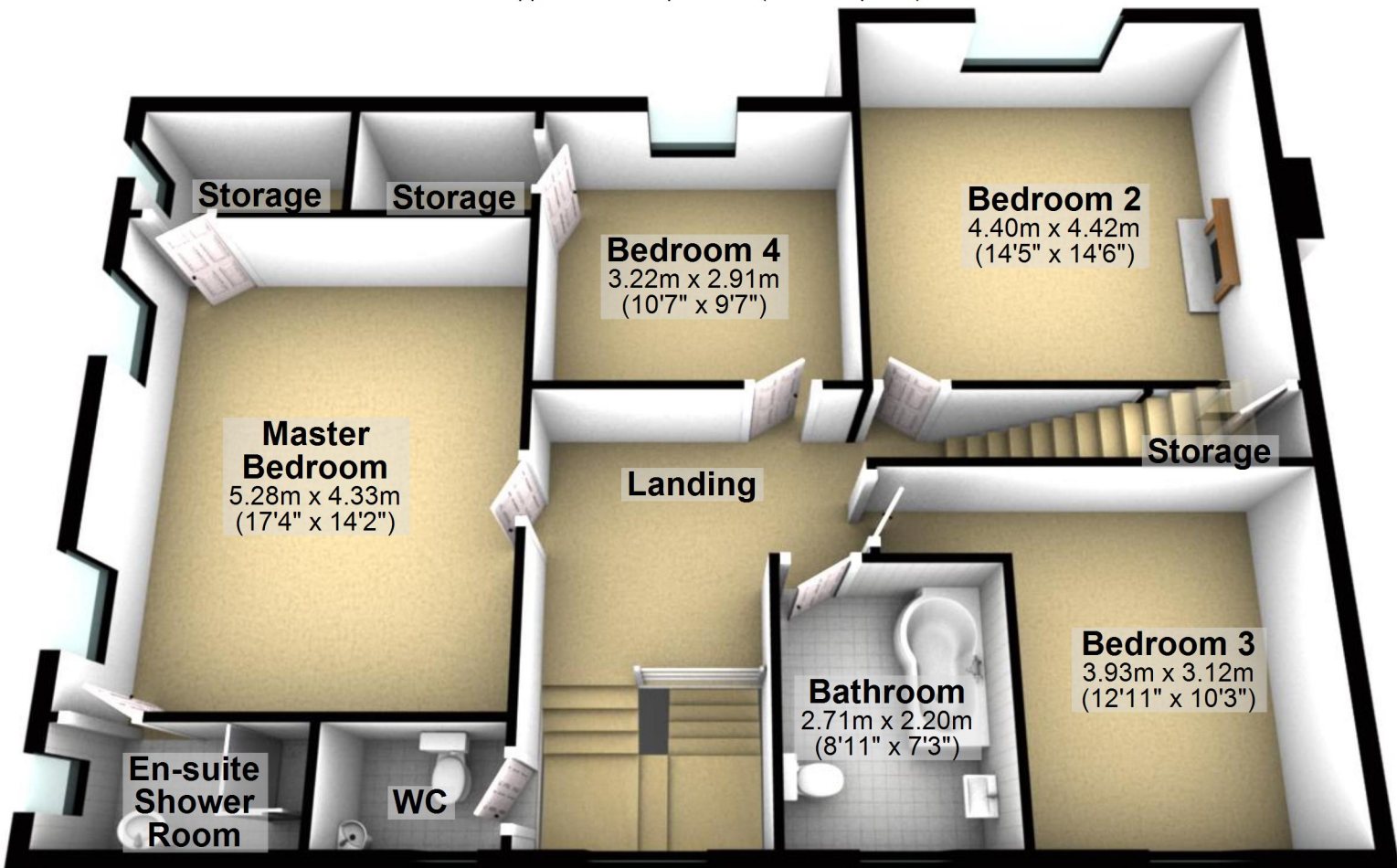
# Ground Floor

Approx. 109.4 sq. metres (1178.1 sq. feet)



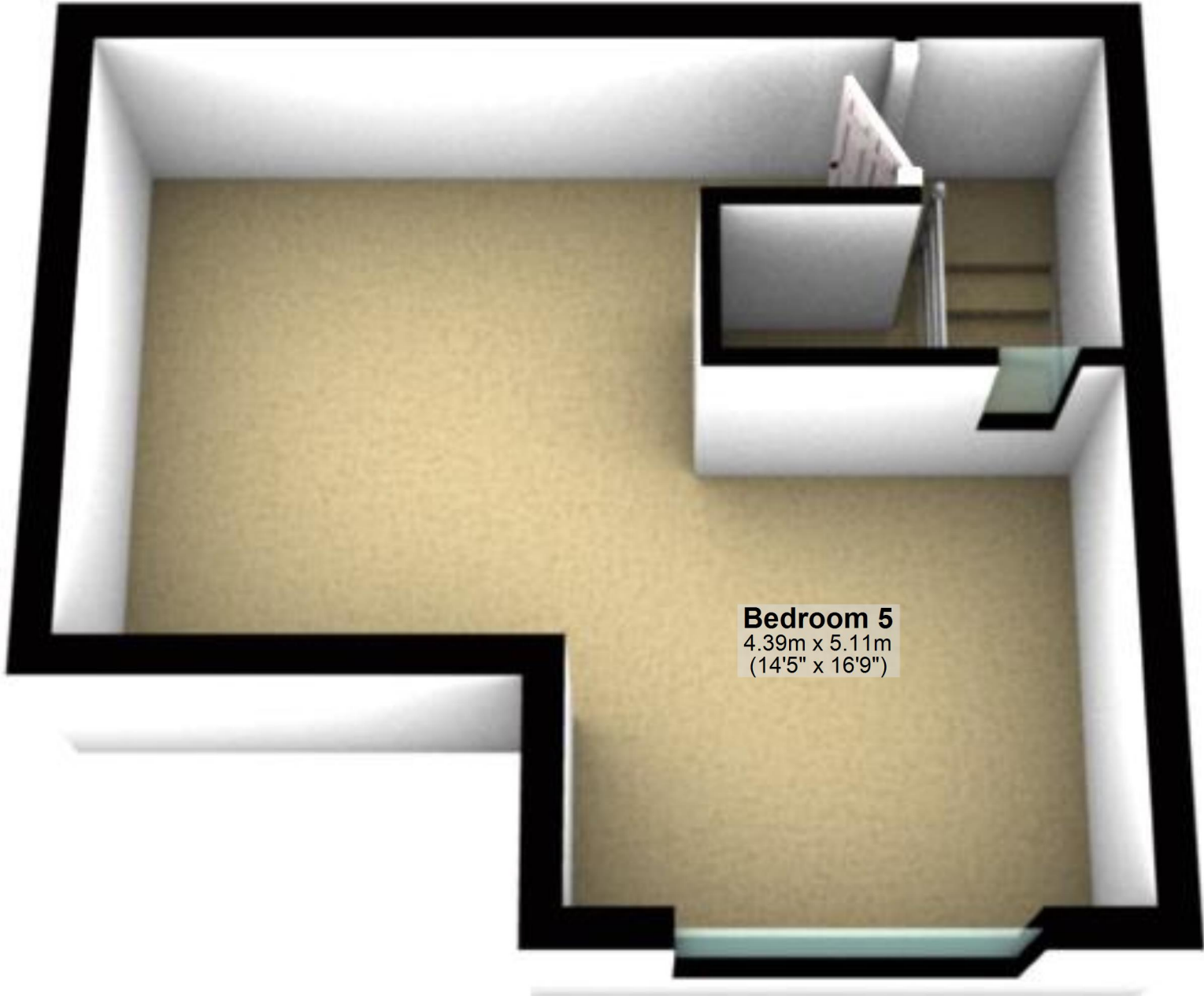
## First Floor

Approx. 101.8 sq. metres (1095.5 sq. feet)



## Second Floor

Approx. 19.5 sq. metres (209.7 sq. feet)



**Bedroom 5**  
4.39m x 5.11m  
(14'5" x 16'9")