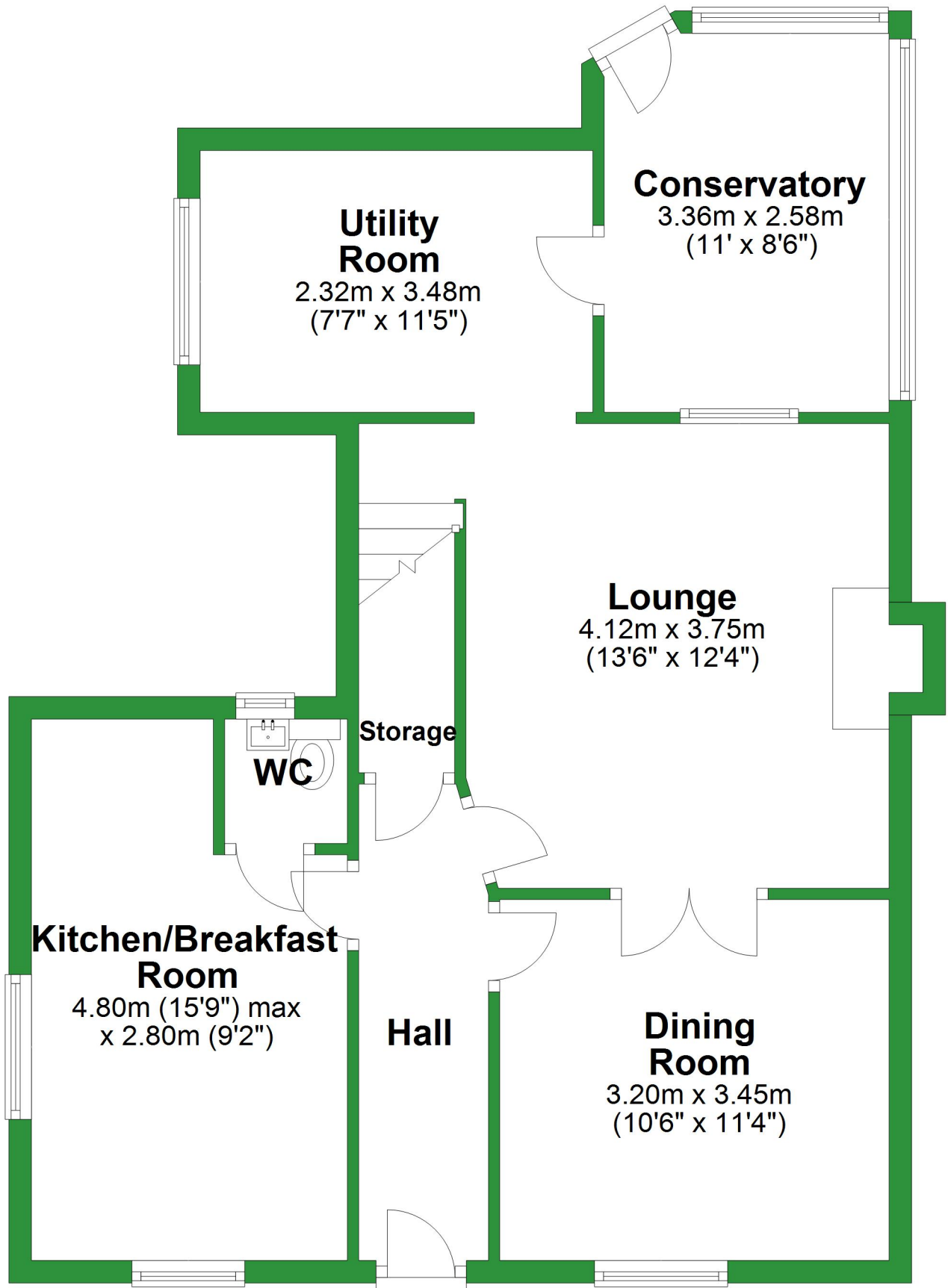


# Ground Floor

Approx. 65.9 sq. metres (709.6 sq. feet)



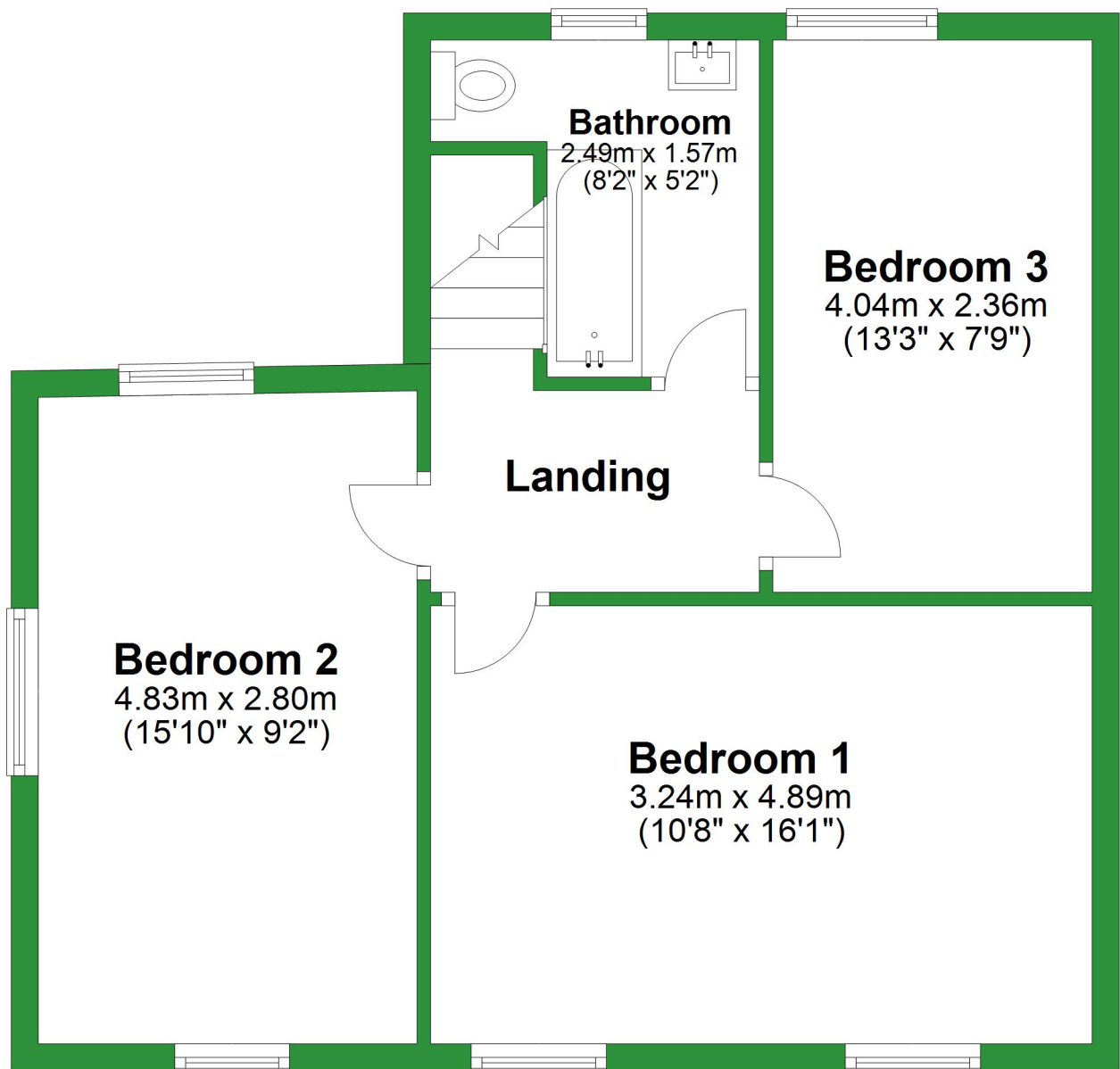
Total area: approx. 116.0 sq. metres (1249.1 sq. feet)

For illustrative purposes only. Not to scale. All sizes are approximate.

Plan produced using PlanUp.

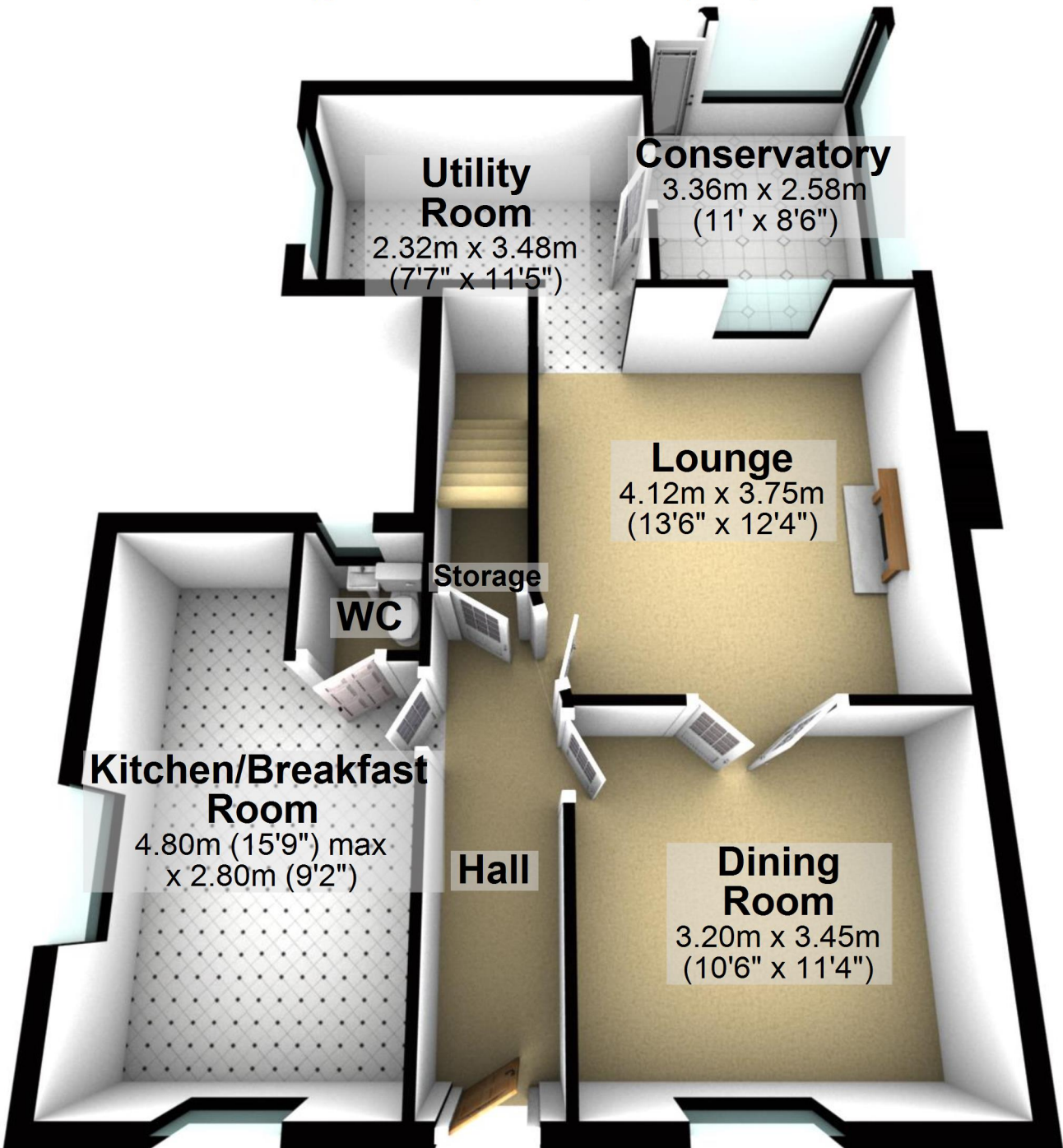
## First Floor

Approx. 50.1 sq. metres (539.5 sq. feet)



## Ground Floor

Approx. 65.9 sq. metres (709.6 sq. feet)



Total area: approx. 116.0 sq. metres (1249.1 sq. feet)

For illustrative purposes only. Not to scale. All sizes are approximate.

Plan produced using PlanUp.

# First Floor

Approx. 50.1 sq. metres (539.5 sq. feet)

