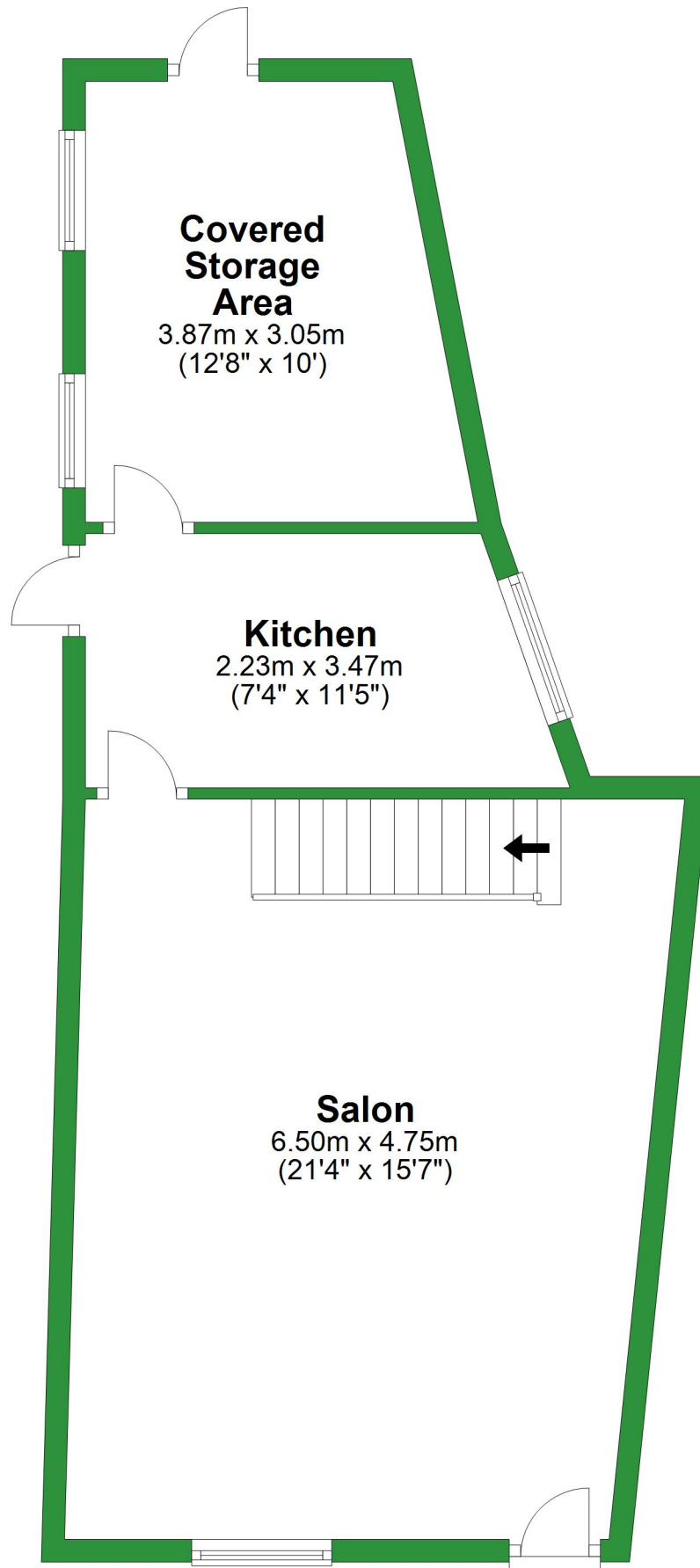


## Ground Floor

Approx. 53.9 sq. metres (580.0 sq. feet)

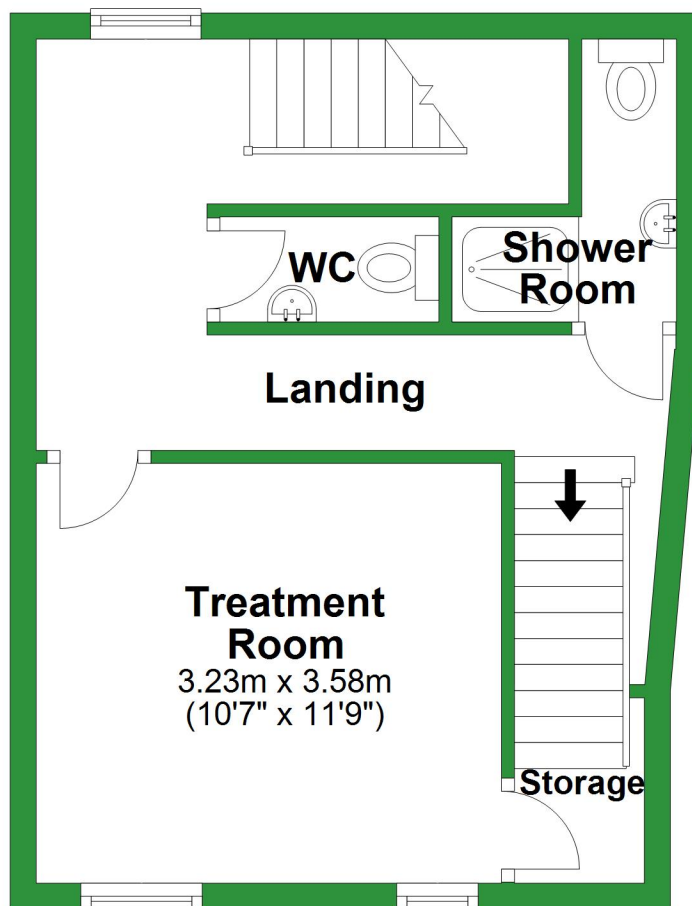


Total area: approx. 113.8 sq. metres (1225.1 sq. feet)

For illustrative purposes only. Not to scale. All sizes are approximate.  
Plan produced using PlanUp.

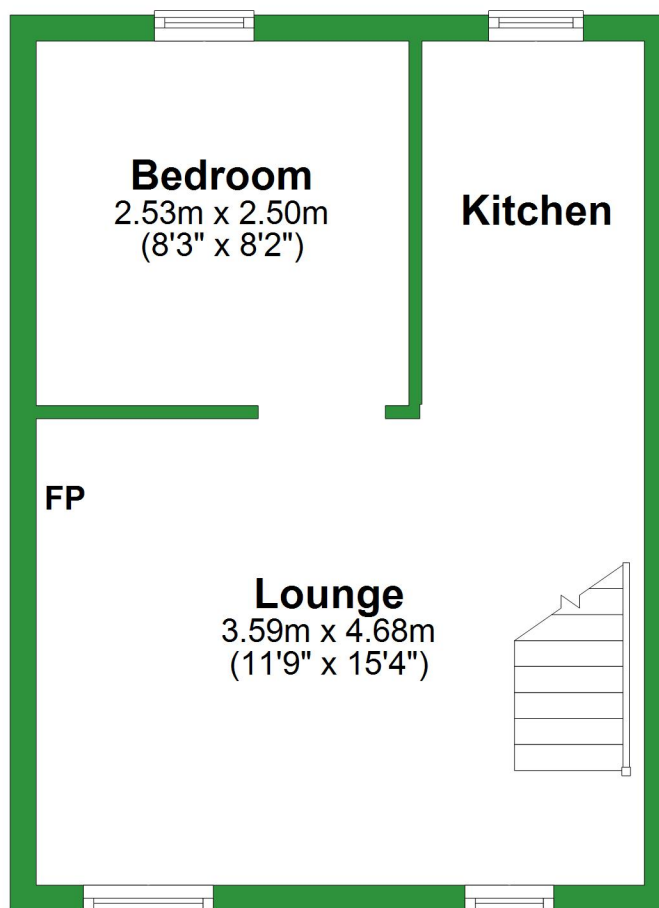
## First Floor

Approx. 30.6 sq. metres (329.0 sq. feet)



## Second Floor

Approx. 29.4 sq. metres (316.1 sq. feet)



# Ground Floor

Approx. 53.9 sq. metres (580.0 sq. feet)

## Covered Storage Area

3.87m x 3.05m  
(12'8" x 10')

## Kitchen

2.23m x 3.47m  
(7'4" x 11'5")

## Salon

6.50m x 4.75m  
(21'4" x 15'7")

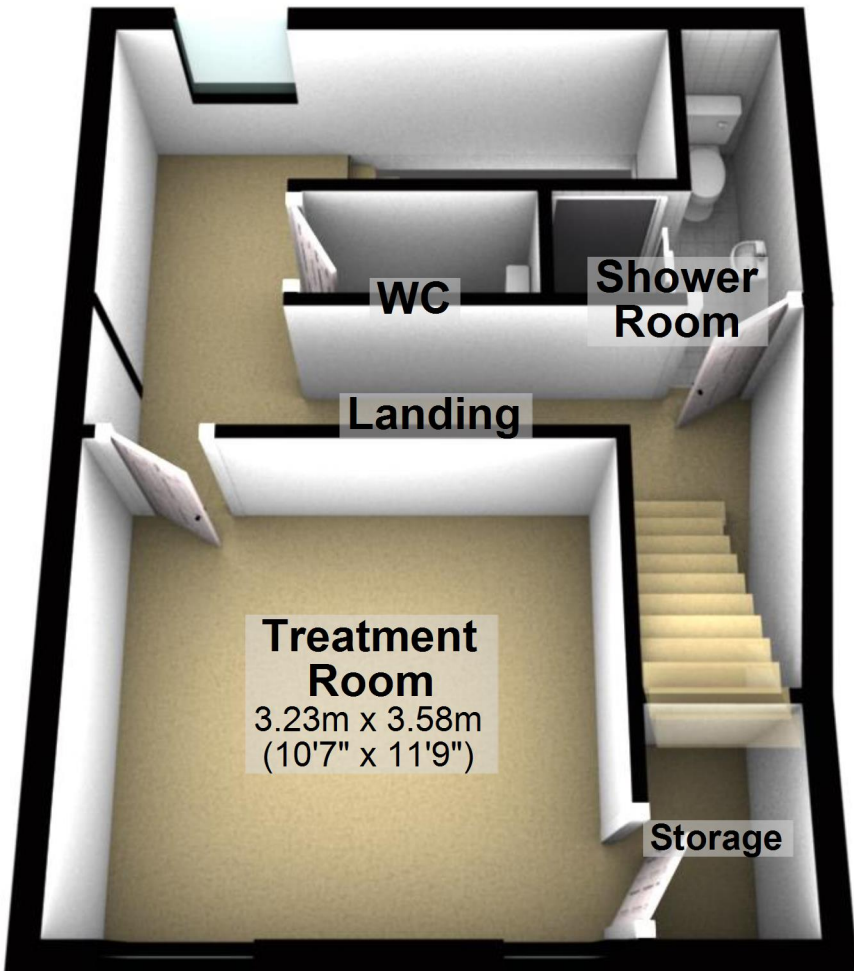
Total area: approx. 113.8 sq. metres (1225.1 sq. feet)

For illustrative purposes only. Not to scale. All sizes are approximate.

Plan produced using PlanUp.

# First Floor

Approx. 30.6 sq. metres (329.0 sq. feet)



## Second Floor

Approx. 29.4 sq. metres (316.1 sq. feet)

