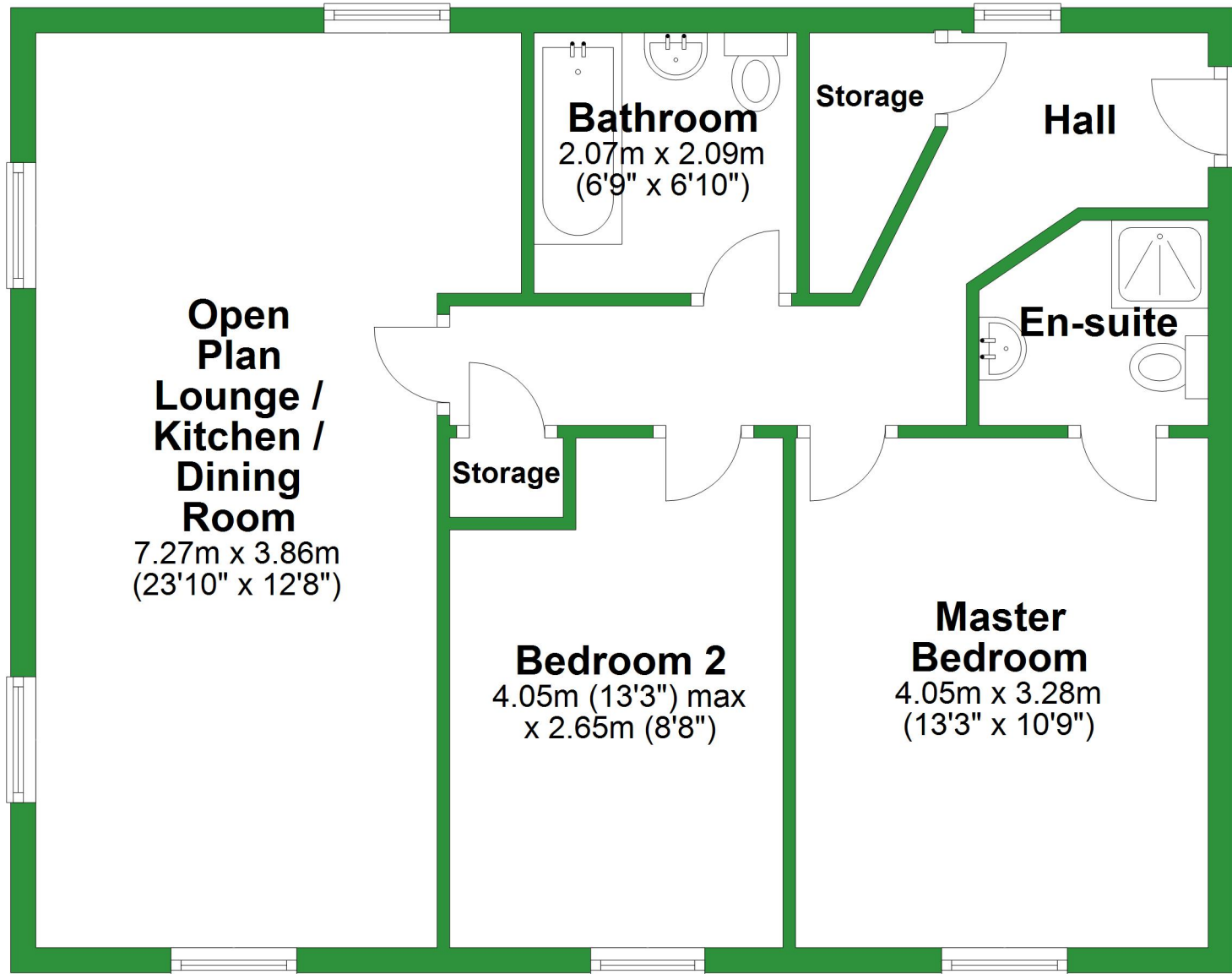


Ground Floor

Approx. 67.8 sq. metres (729.3 sq. feet)

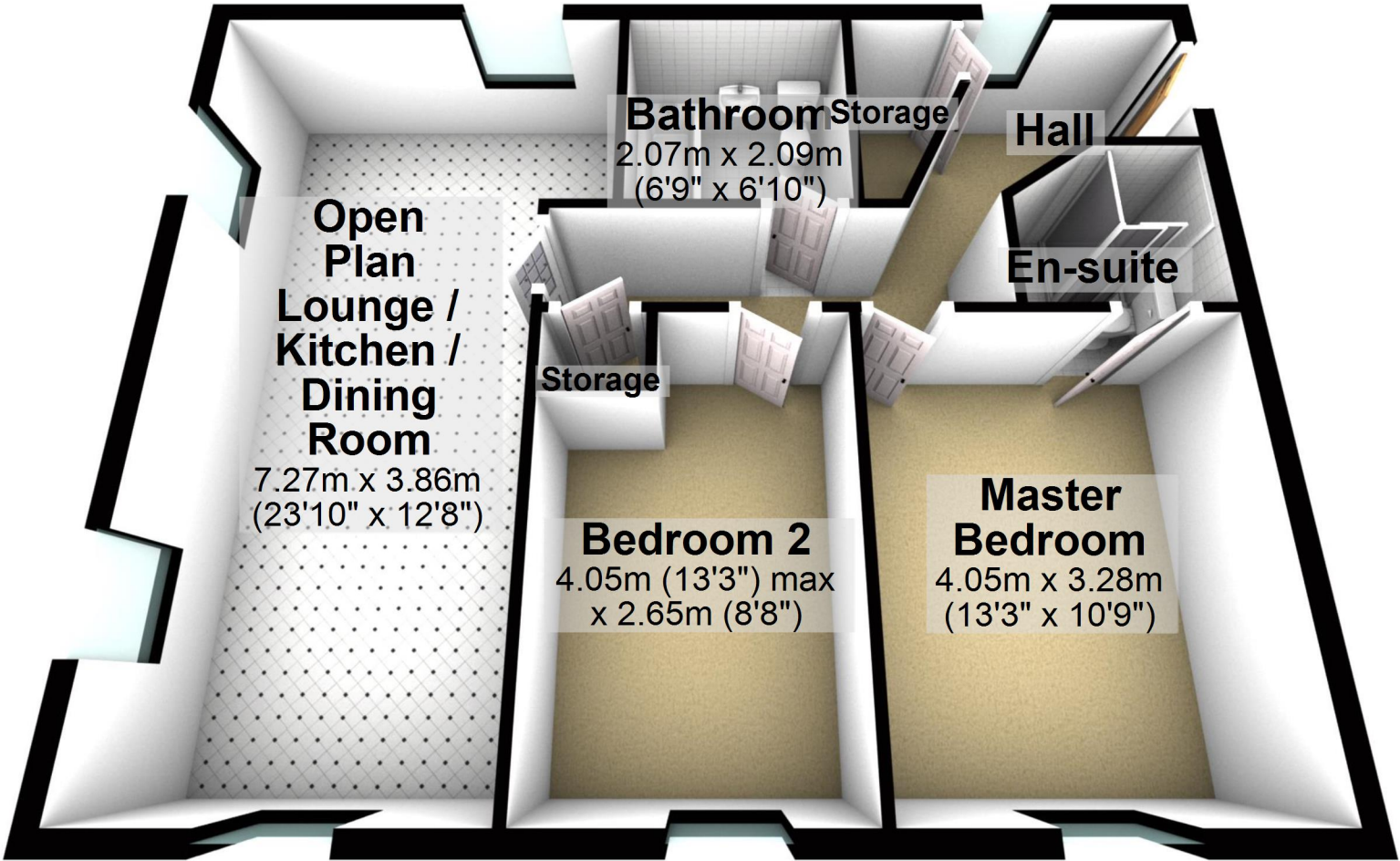


Total area: approx. 67.8 sq. metres (729.3 sq. feet)

For illustrative purposes only. Not to scale. All sizes are approximate.
Plan produced using PlanUp.

Ground Floor

Approx. 67.8 sq. metres (729.3 sq. feet)



Total area: approx. 67.8 sq. metres (729.3 sq. feet)

For illustrative purposes only. Not to scale. All sizes are approximate.
Plan produced using PlanUp.