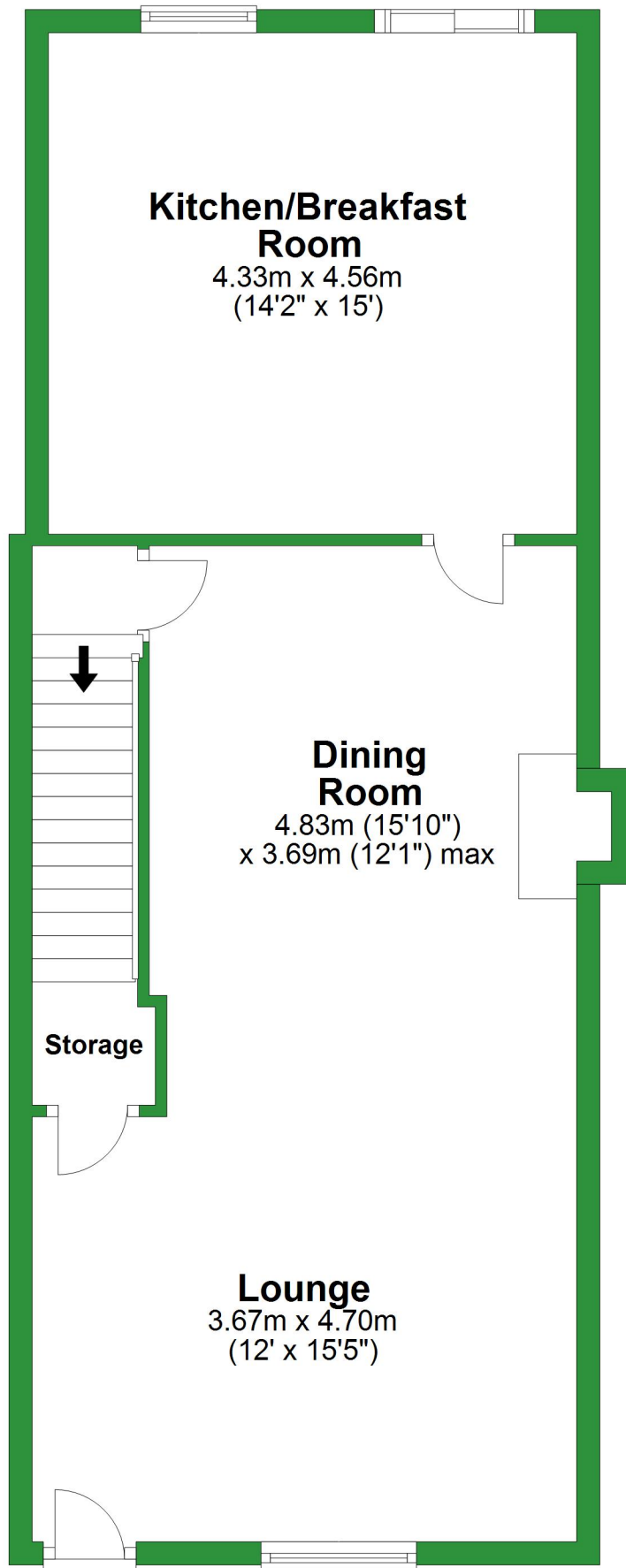


# Ground Floor

Approx. 55.4 sq. metres (596.3 sq. feet)

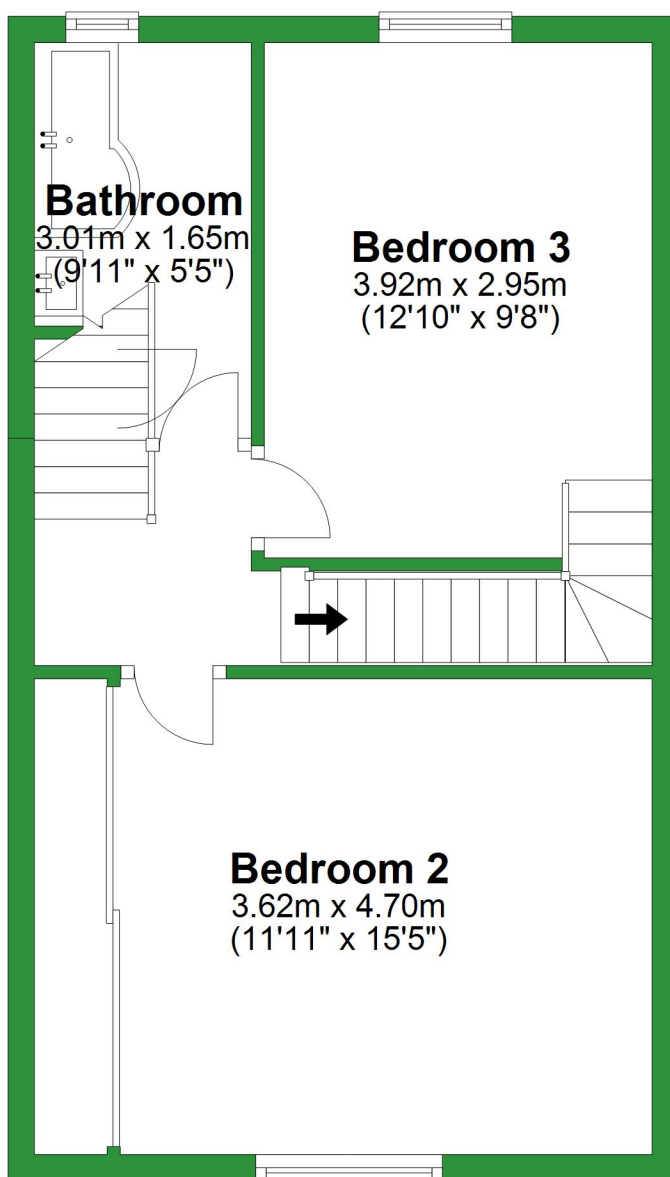


Total area: approx. 122.0 sq. metres (1313.3 sq. feet)

For illustrative purposes only. Not to scale. All sizes are approximate.  
Plan produced using PlanUp.

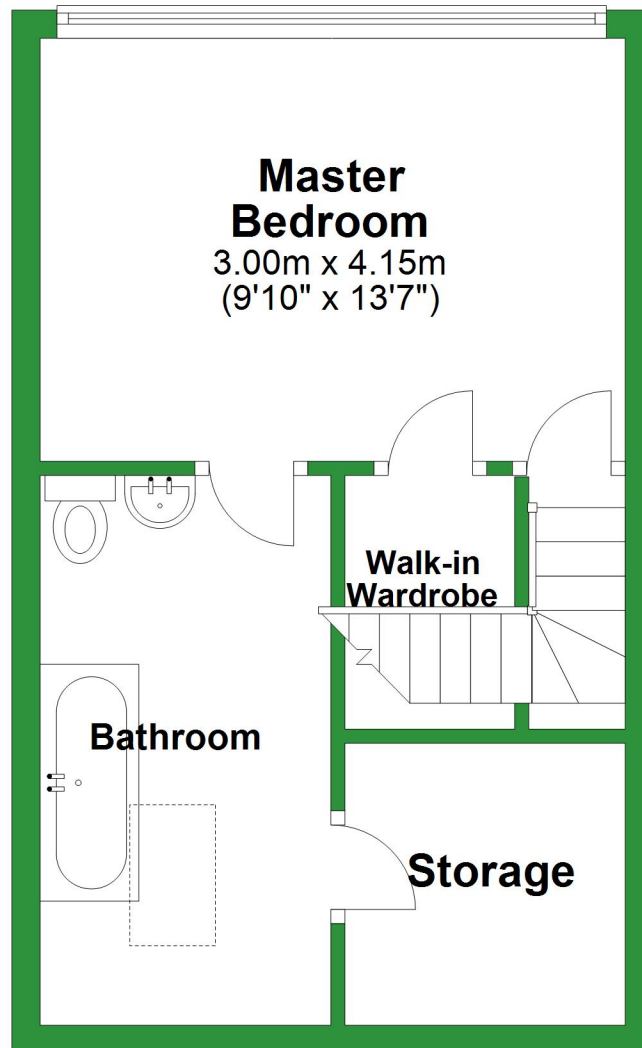
## First Floor

Approx. 39.8 sq. metres (428.0 sq. feet)



## Second Floor

Approx. 26.9 sq. metres (289.1 sq. feet)



# Ground Floor

Approx. 55.4 sq. metres (596.3 sq. feet)

## Kitchen/Breakfast Room

4.33m x 4.56m  
(14'2" x 15')

## Dining Room

4.83m (15'10")  
x 3.69m (12'1") max

Storage

## Lounge

3.67m x 4.70m  
(12' x 15'5")

Total area: approx. 122.0 sq. metres (1313.3 sq. feet)

For illustrative purposes only. Not to scale. All sizes are approximate.

Plan produced using PlanUp.

## First Floor

Approx. 39.8 sq. metres (428.0 sq. feet)

### Bathroom

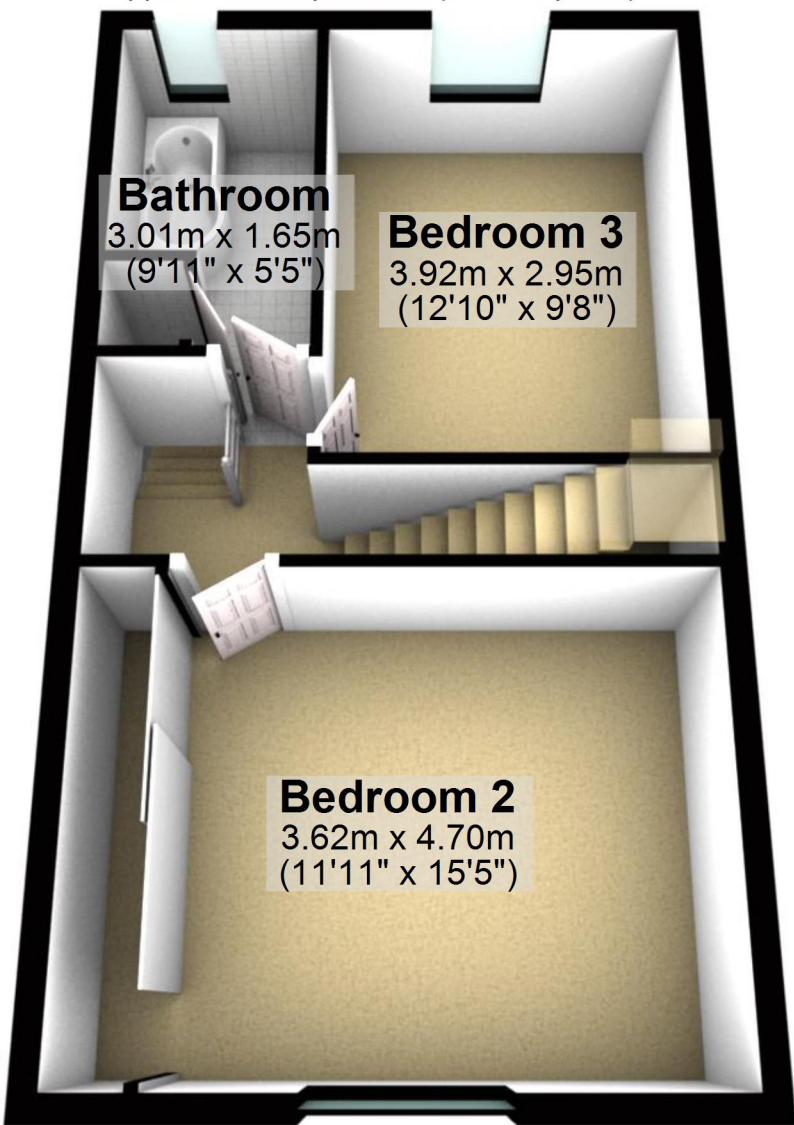
3.01m x 1.65m  
(9'11" x 5'5")

### Bedroom 3

3.92m x 2.95m  
(12'10" x 9'8")

### Bedroom 2

3.62m x 4.70m  
(11'11" x 15'5")



## Second Floor

Approx. 26.9 sq. metres (289.1 sq. feet)

### Master Bedroom

3.00m x 4.15m  
(9'10" x 13'7")

### Bathroom

### Walk-in Wardrobe

### Storage

