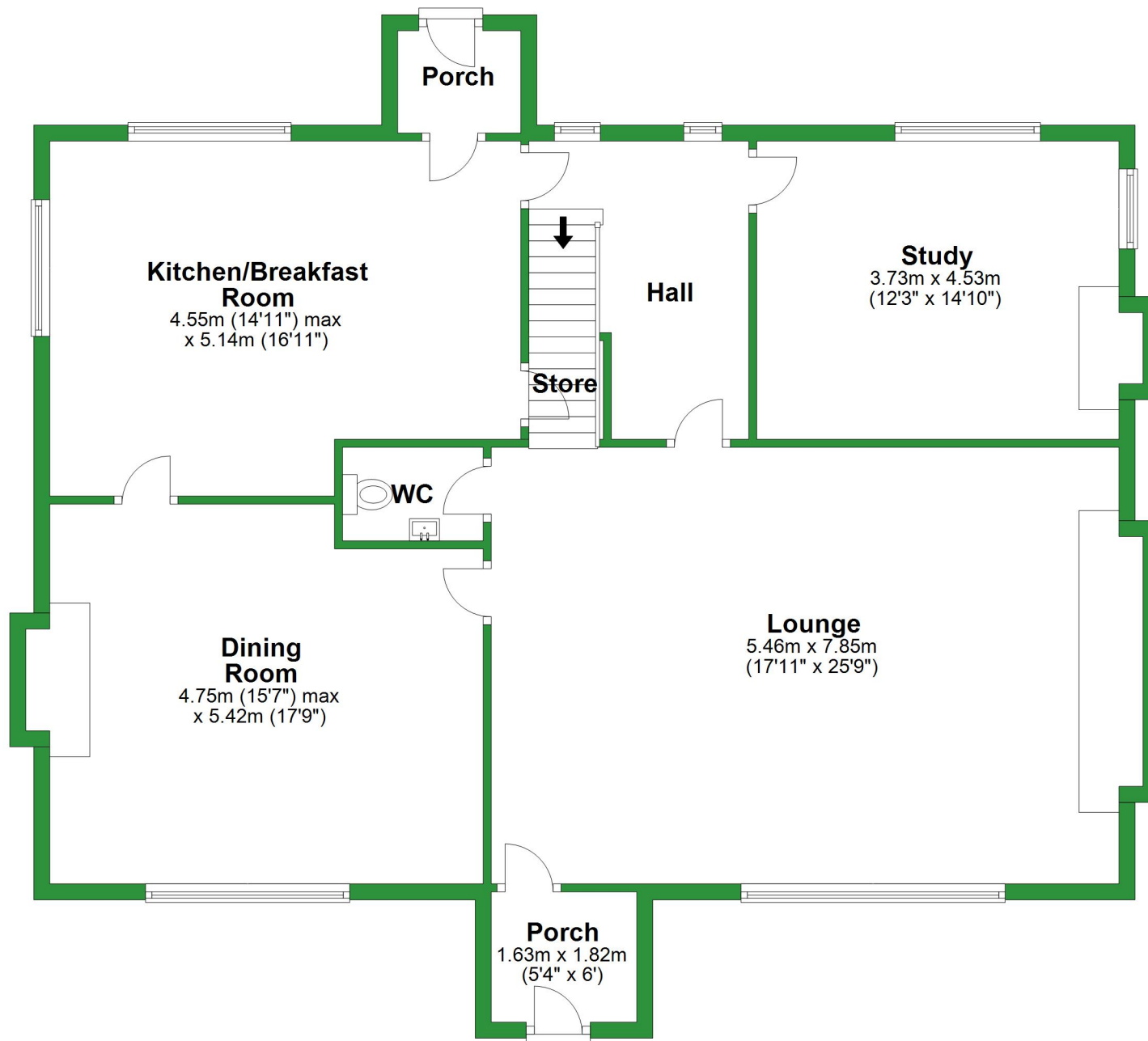


Ground Floor

Approx. 129.5 sq. metres (1393.7 sq. feet)

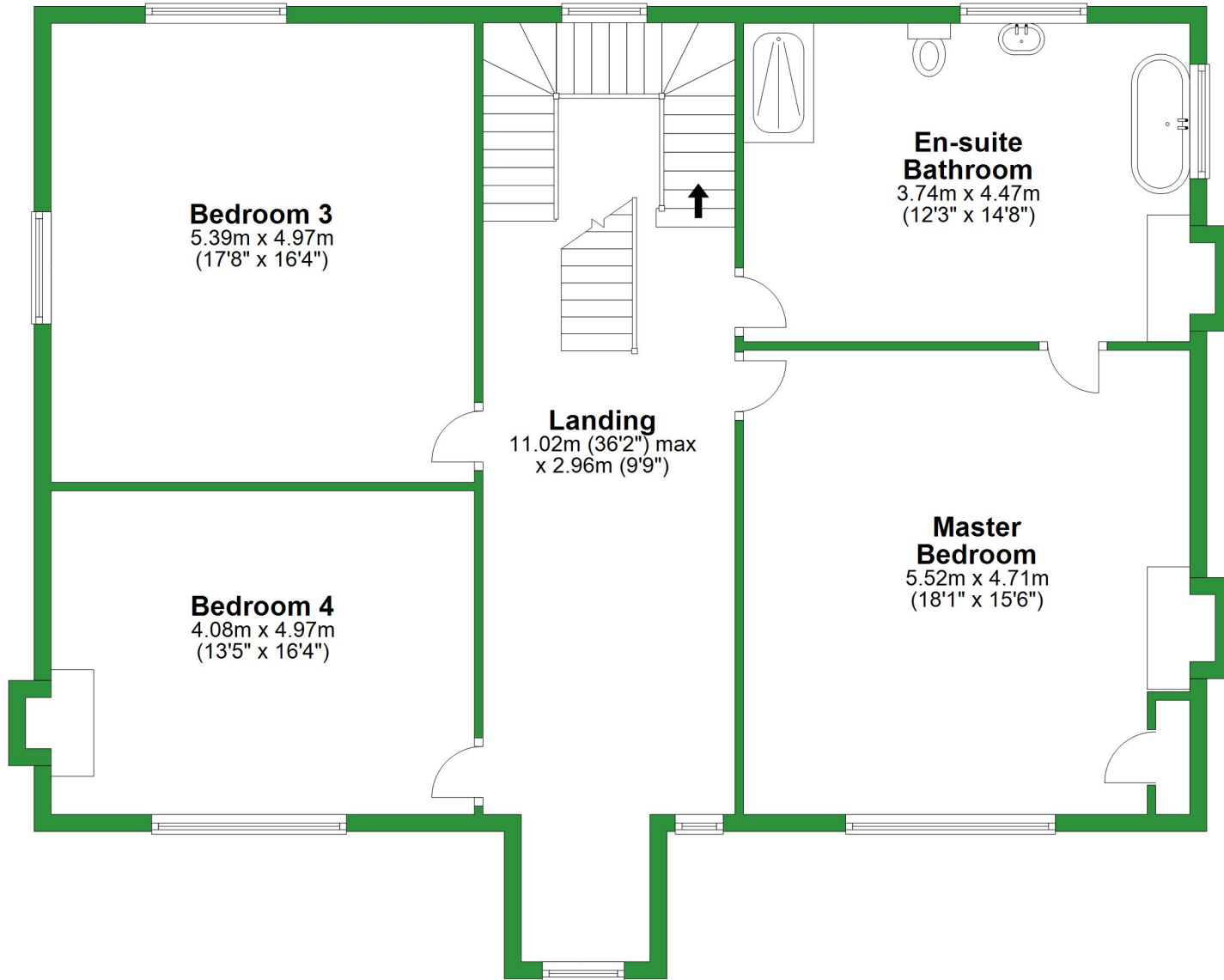


Total area: approx. 367.5 sq. metres (3955.6 sq. feet)

For illustrative purposes only. Not to scale. All sizes are approximate.
Plan produced using PlanUp.

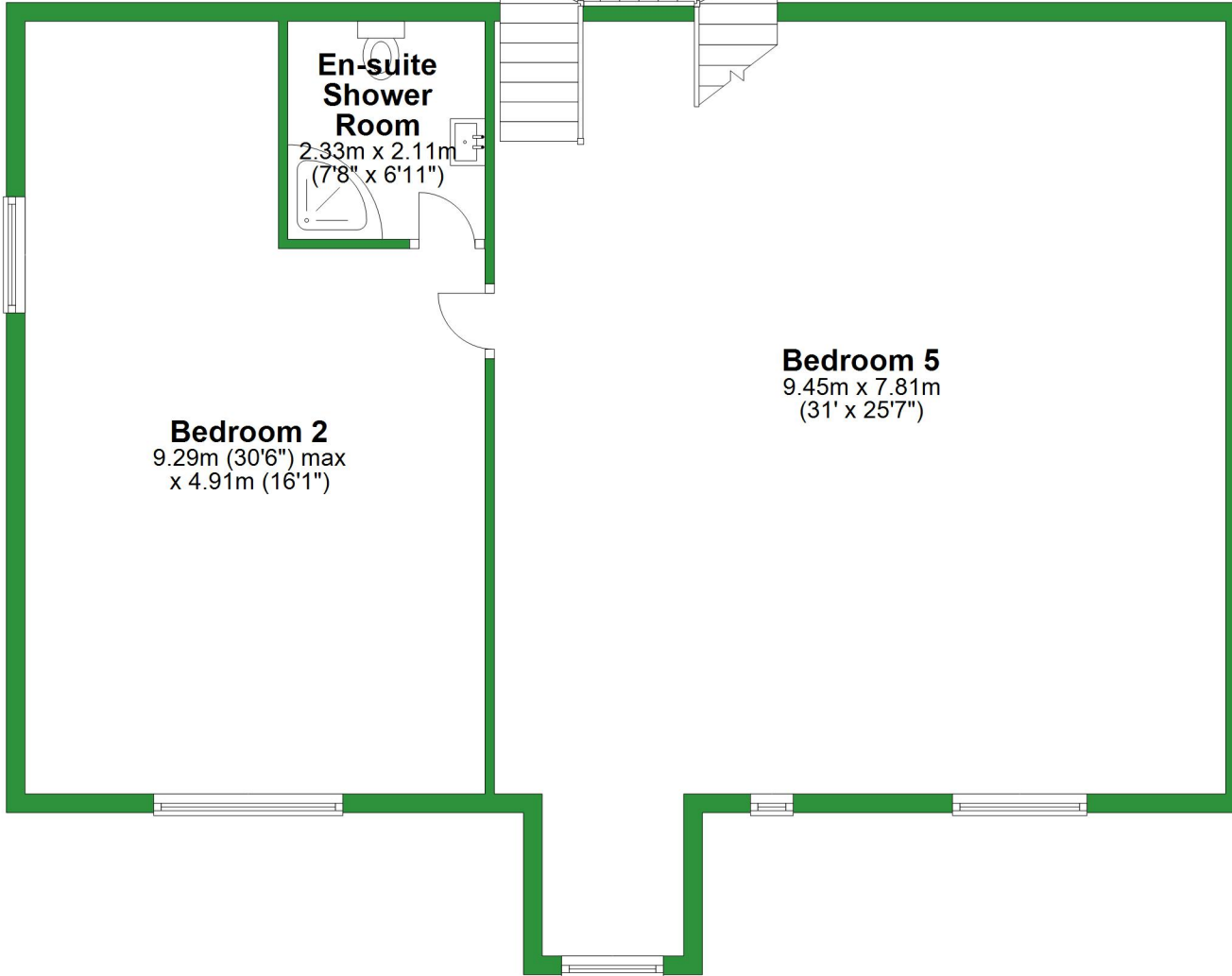
First Floor

Approx. 126.9 sq. metres (1365.6 sq. feet)



Second Floor

Approx. 111.1 sq. metres (1196.3 sq. feet)



**En-suite
Shower
Room**

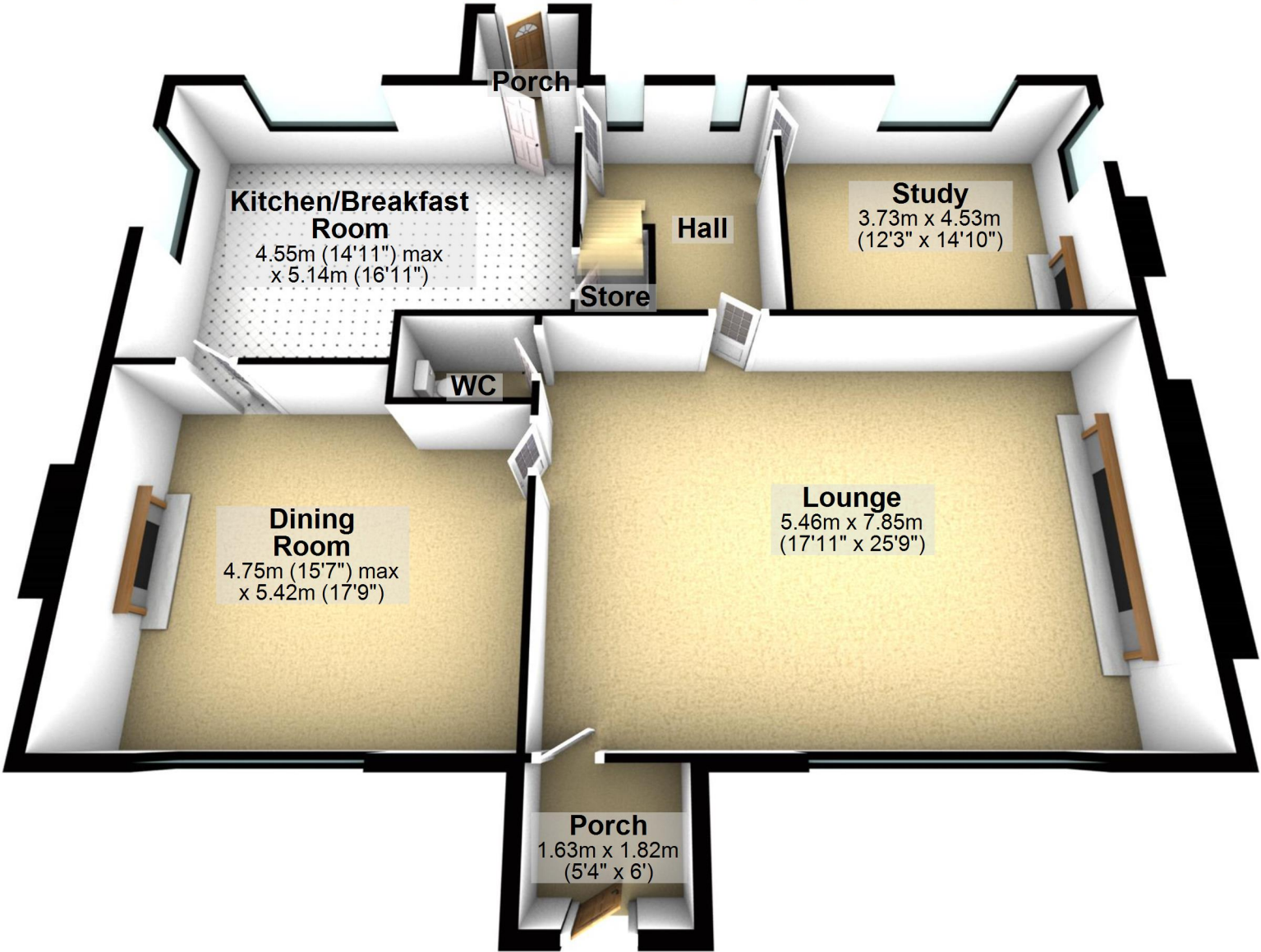
2.33m x 2.11m
(7'8" x 6'11")

Bedroom 2
9.29m (30'6") max
x 4.91m (16'1")

Bedroom 5
9.45m x 7.81m
(31' x 25'7")

Ground Floor

Approx. 129.5 sq. metres (1393.7 sq. feet)



Total area: approx. 367.5 sq. metres (3955.6 sq. feet)

For illustrative purposes only. Not to scale. All sizes are approximate.
Plan produced using PlanUp.

First Floor

Approx. 126.9 sq. metres (1365.6 sq. feet)

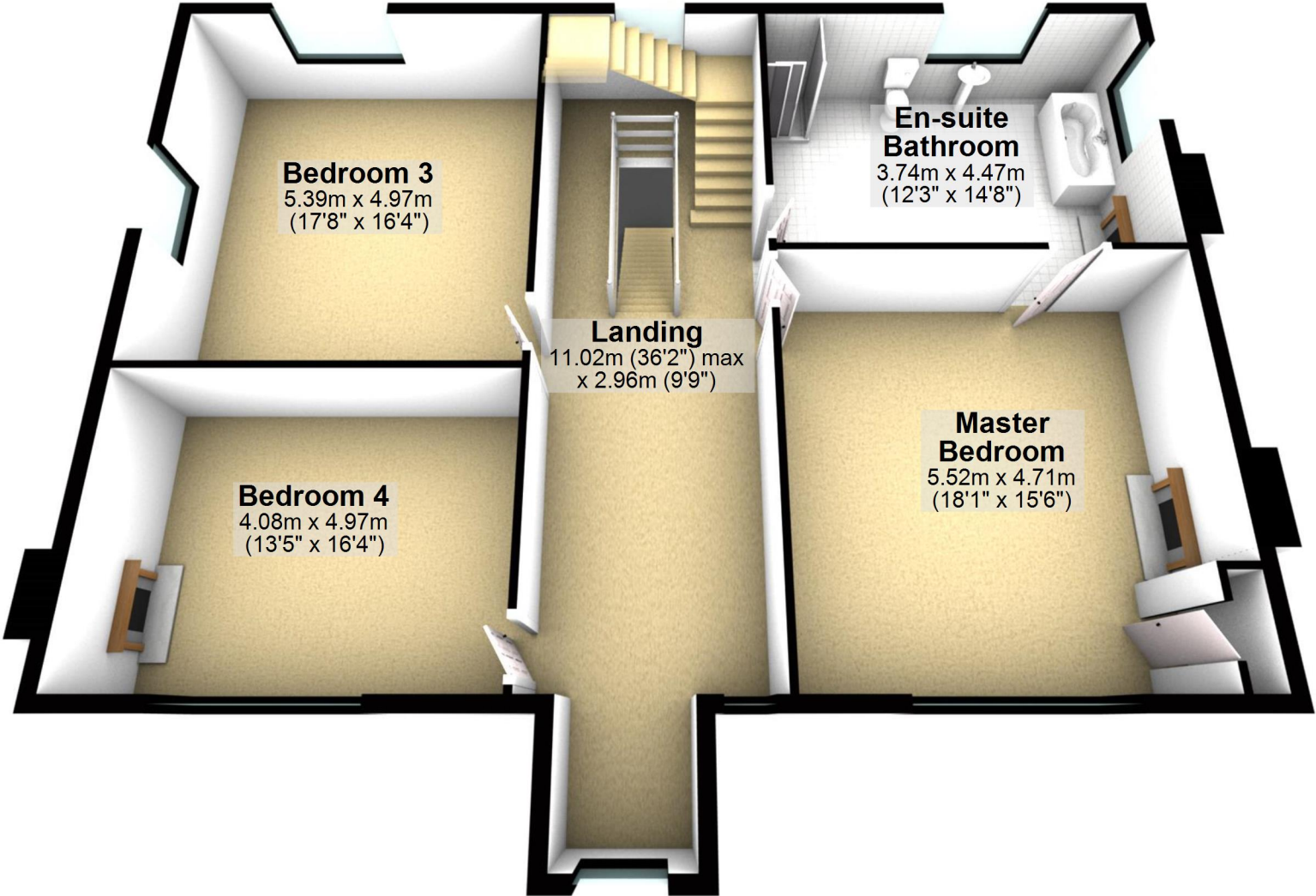
Bedroom 3
5.39m x 4.97m
(17'8" x 16'4")

Bedroom 4
4.08m x 4.97m
(13'5" x 16'4")

Landing
11.02m (36'2") max
x 2.96m (9'9")

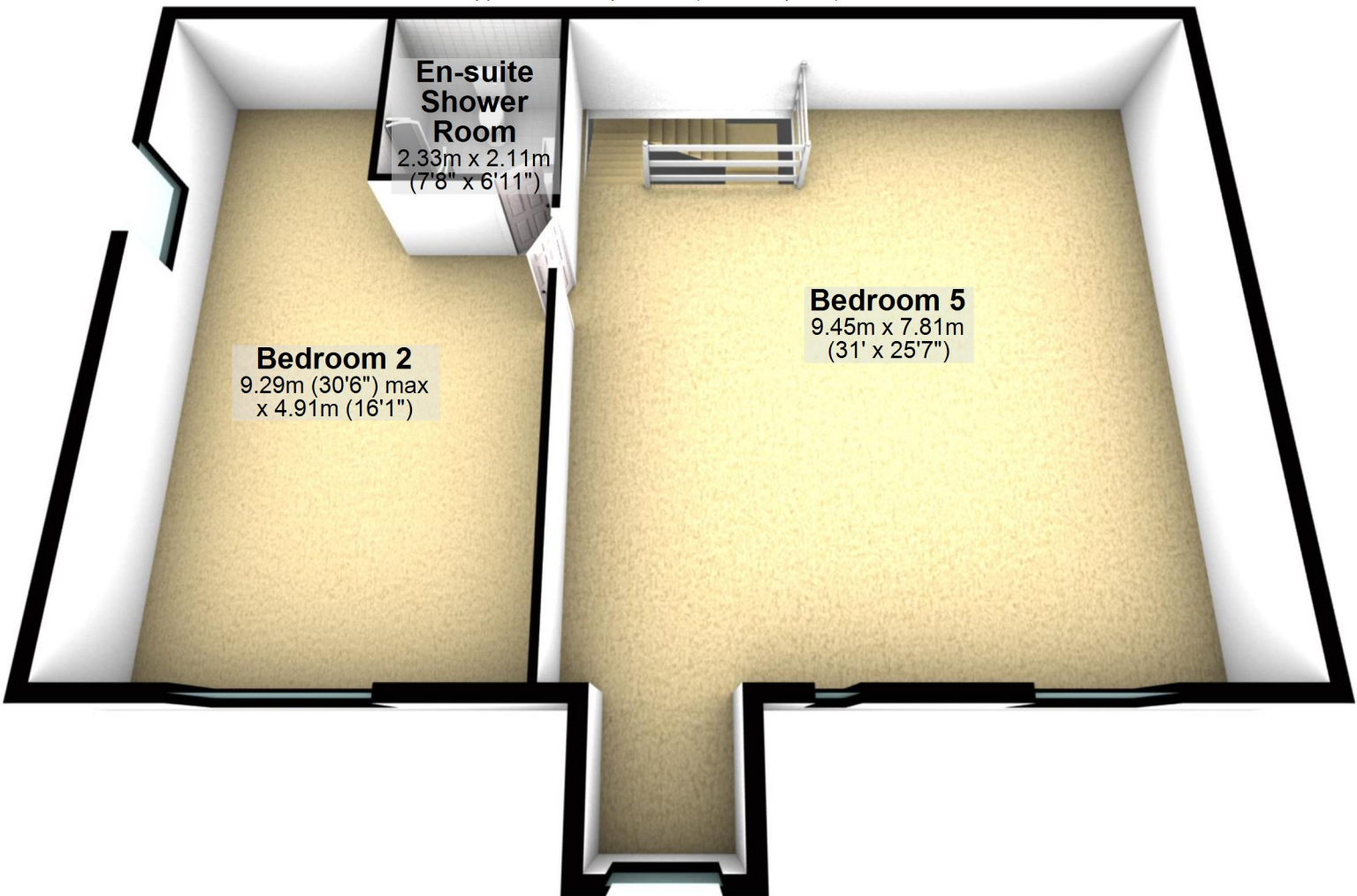
**En-suite
Bathroom**
3.74m x 4.47m
(12'3" x 14'8")

**Master
Bedroom**
5.52m x 4.71m
(18'1" x 15'6")



Second Floor

Approx. 111.1 sq. metres (1196.3 sq. feet)



En-suite Shower Room

2.33m x 2.11m
(7'8" x 6'11")

Bedroom 2

9.29m (30'6") max
x 4.91m (16'1")

Bedroom 5

9.45m x 7.81m
(31' x 25'7")