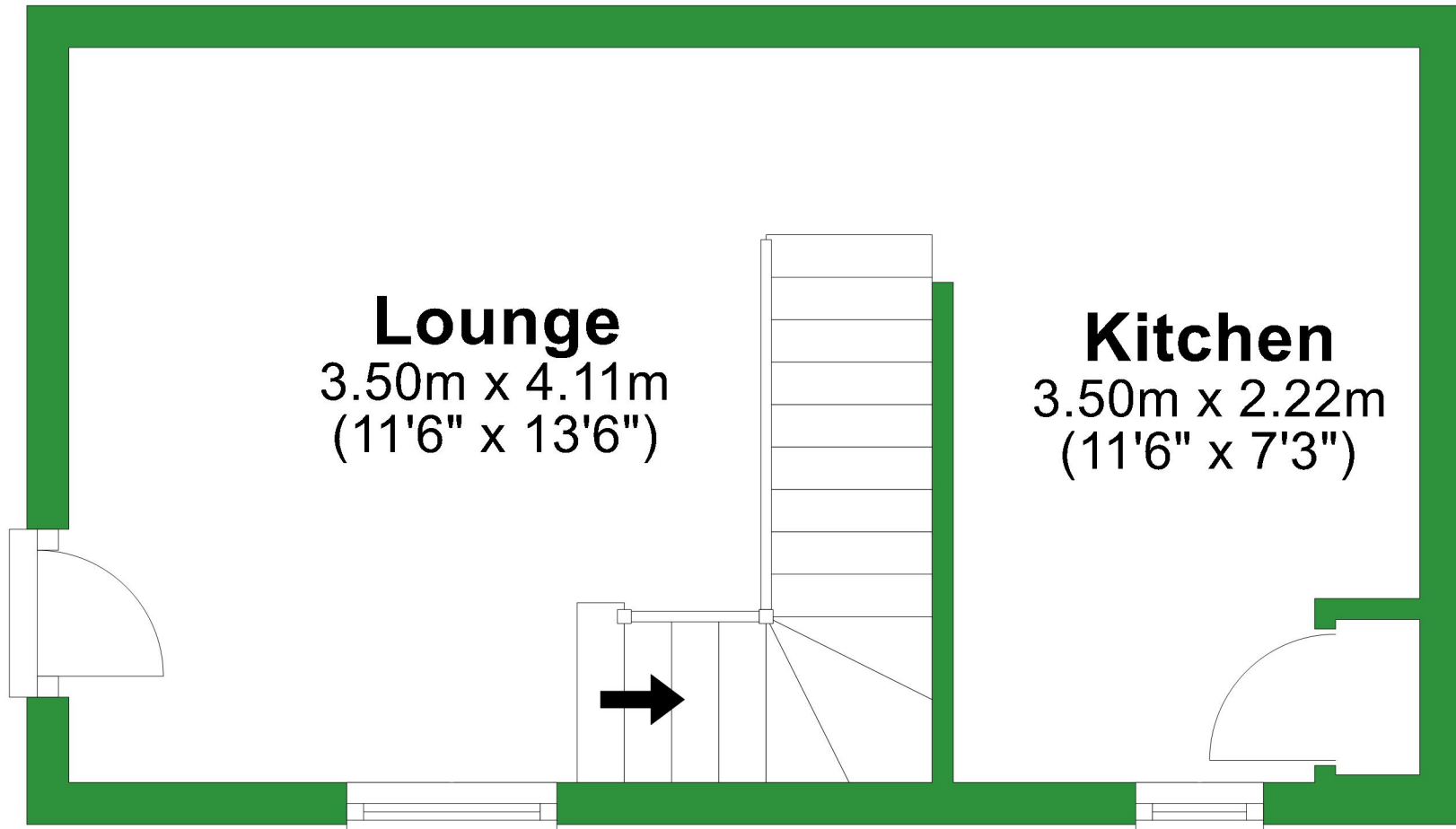


# Ground Floor

Approx. 22.5 sq. metres (242.2 sq. feet)



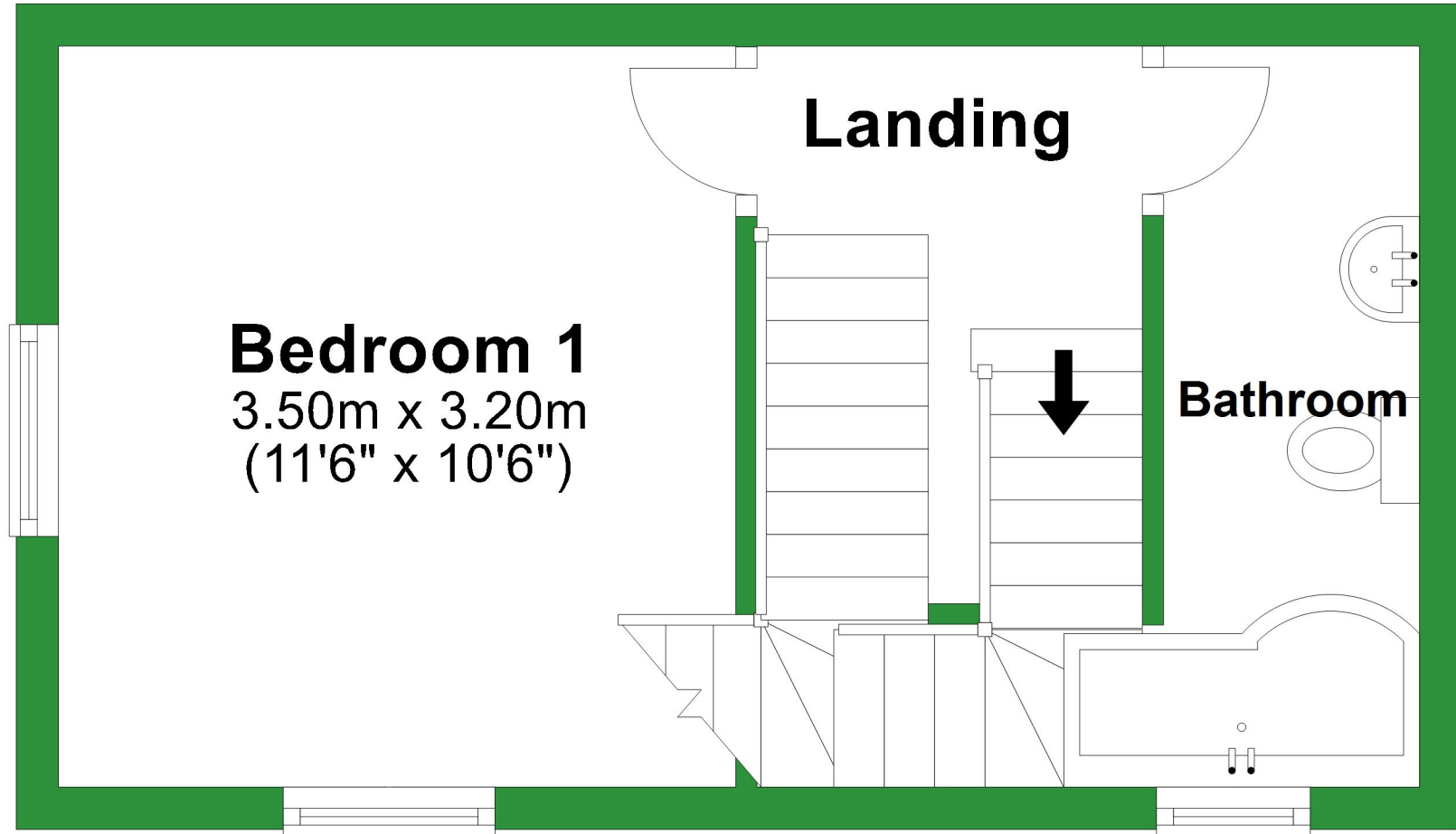
Total area: approx. 57.5 sq. metres (618.4 sq. feet)

For illustrative purposes only. Not to scale. All sizes are approximate.

Plan produced using PlanUp.

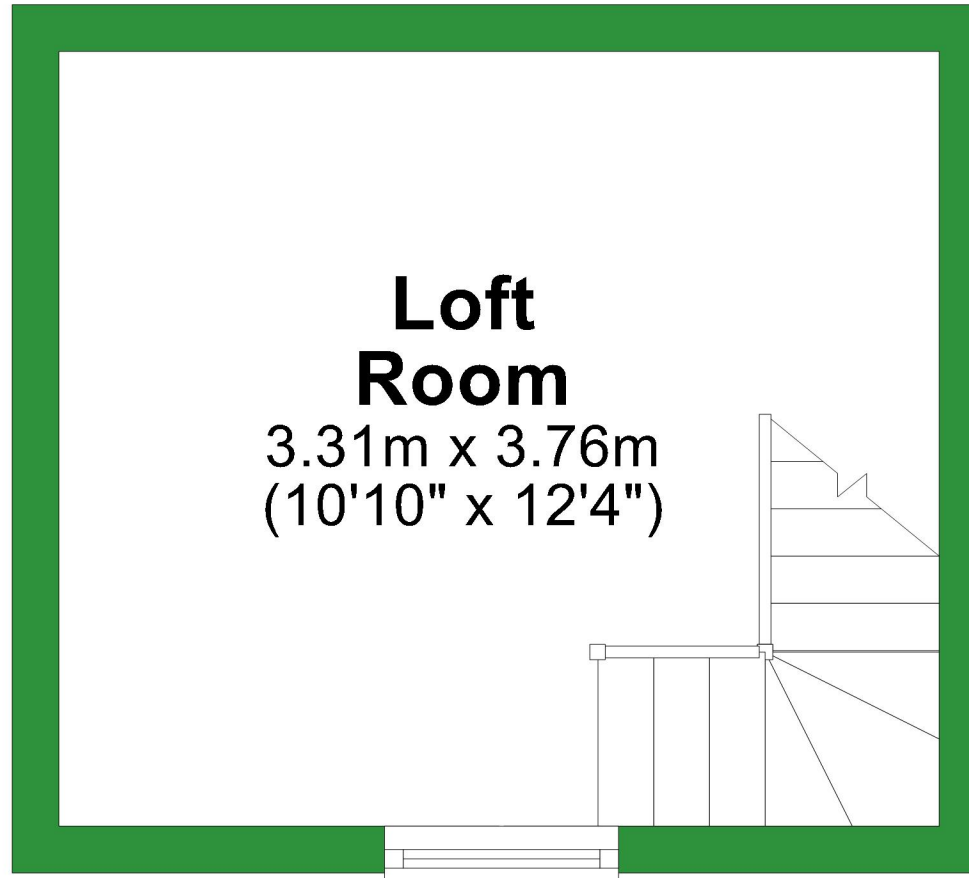
# First Floor

Approx. 22.5 sq. metres (242.2 sq. feet)



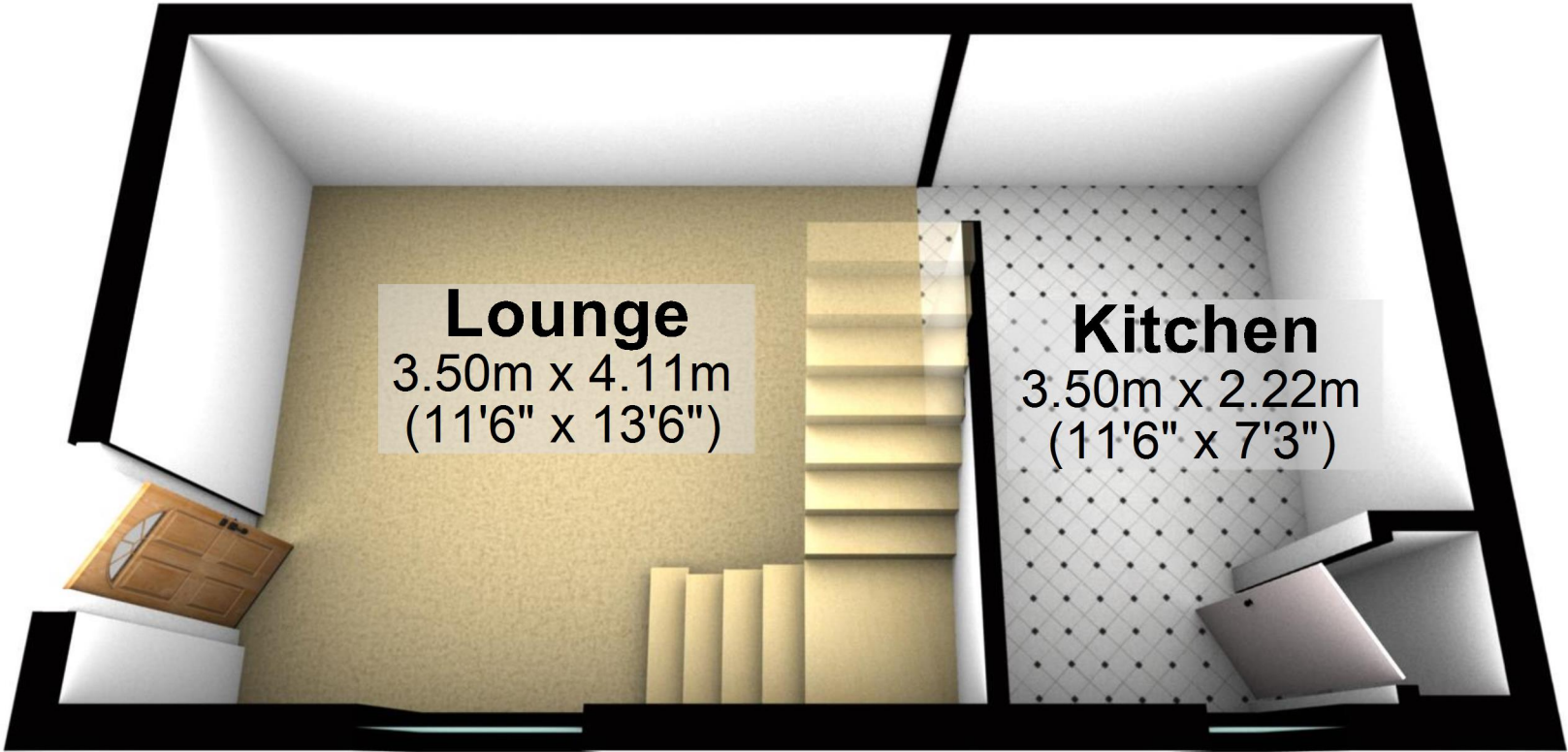
# Second Floor

Approx. 12.4 sq. metres (134.0 sq. feet)



# Ground Floor

Approx. 22.5 sq. metres (242.2 sq. feet)



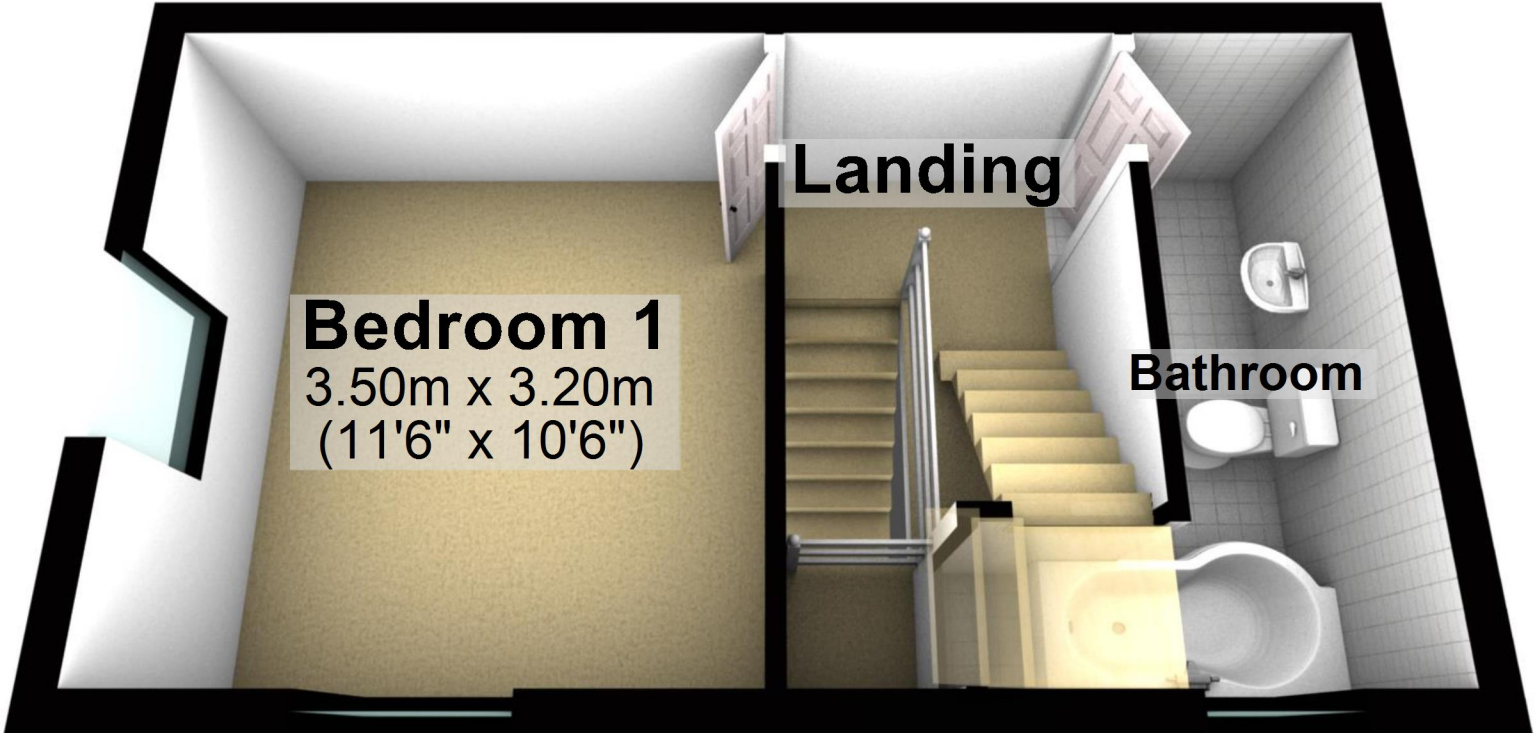
Total area: approx. 57.5 sq. metres (618.4 sq. feet)

For illustrative purposes only. Not to scale. All sizes are approximate.

Plan produced using PlanUp.

# First Floor

Approx. 22.5 sq. metres (242.2 sq. feet)



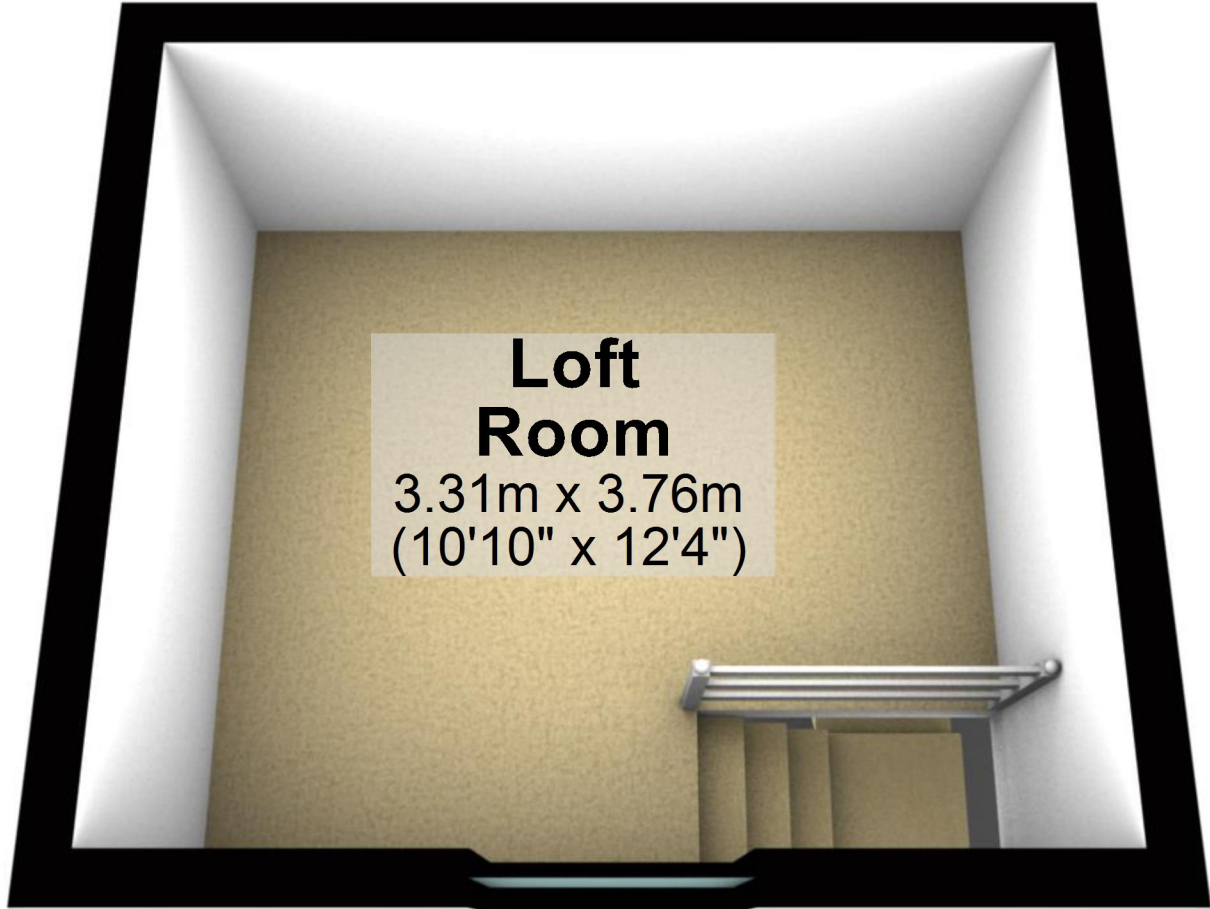
**Bedroom 1**  
3.50m x 3.20m  
(11'6" x 10'6")

**Landing**

**Bathroom**

# Second Floor

Approx. 12.4 sq. metres (134.0 sq. feet)



## Loft Room

3.31m x 3.76m  
(10'10" x 12'4")