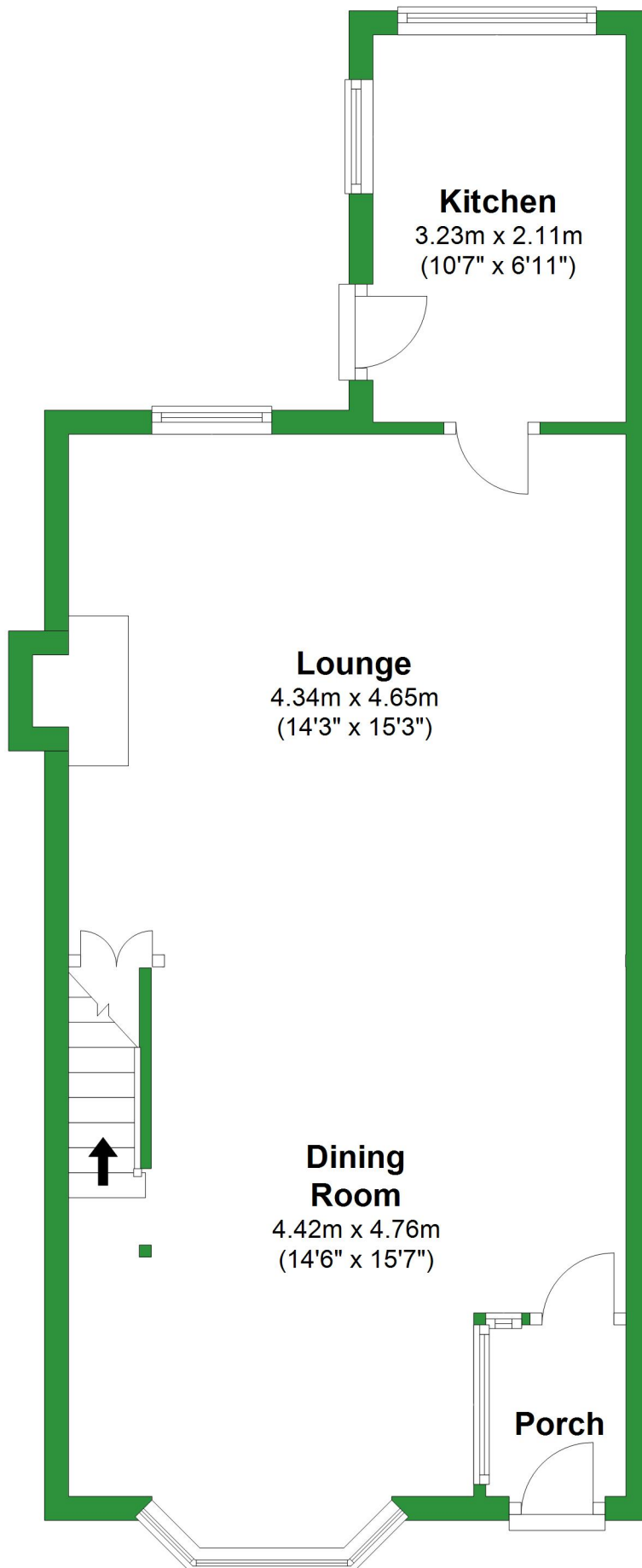


# Ground Floor

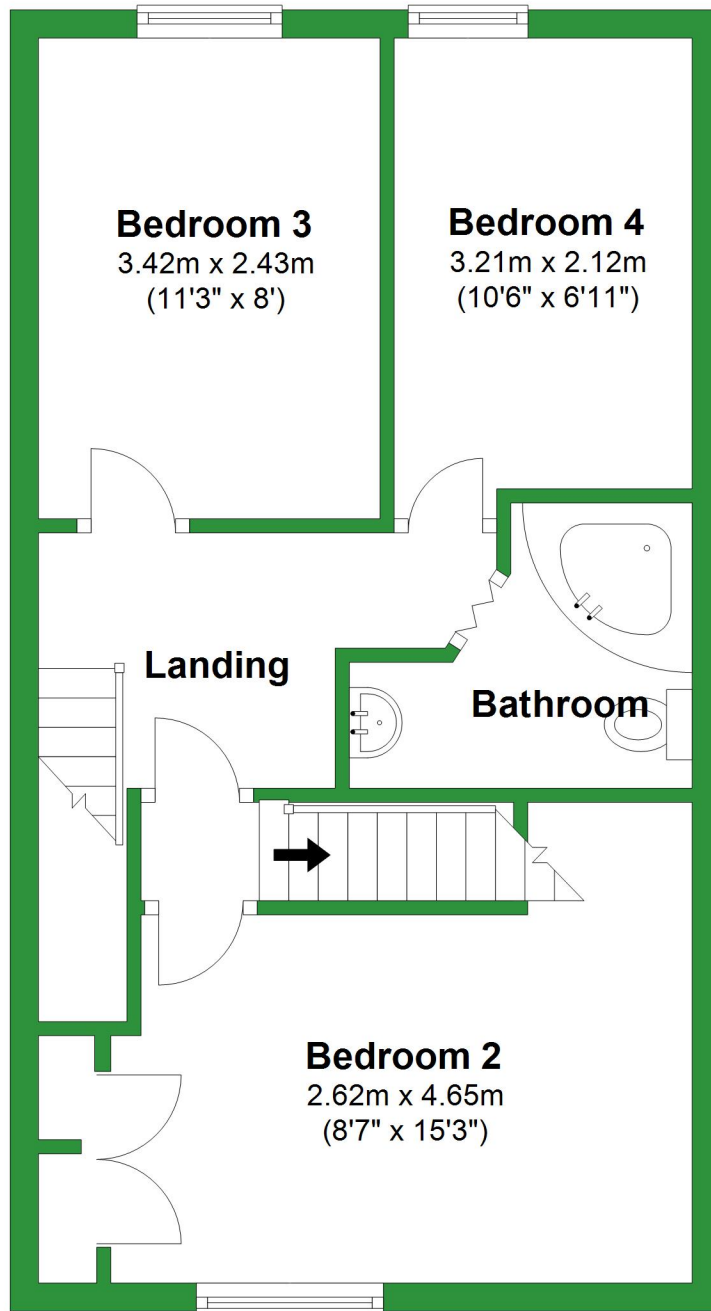
Approx. 48.7 sq. metres (524.0 sq. feet)



Total area: approx. 115.8 sq. metres (1246.3 sq. feet)

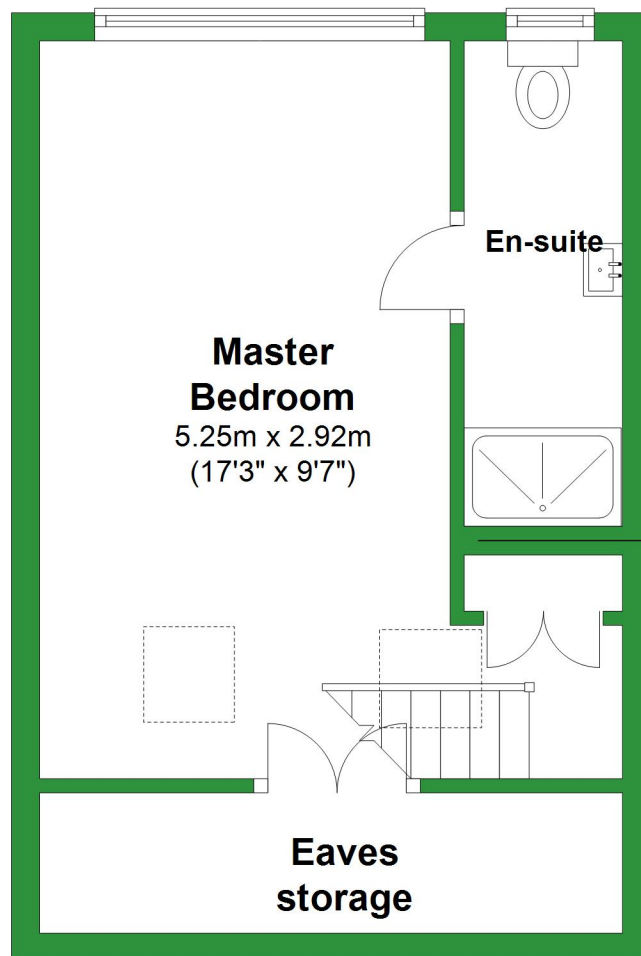
# First Floor

Approx. 41.1 sq. metres (442.7 sq. feet)



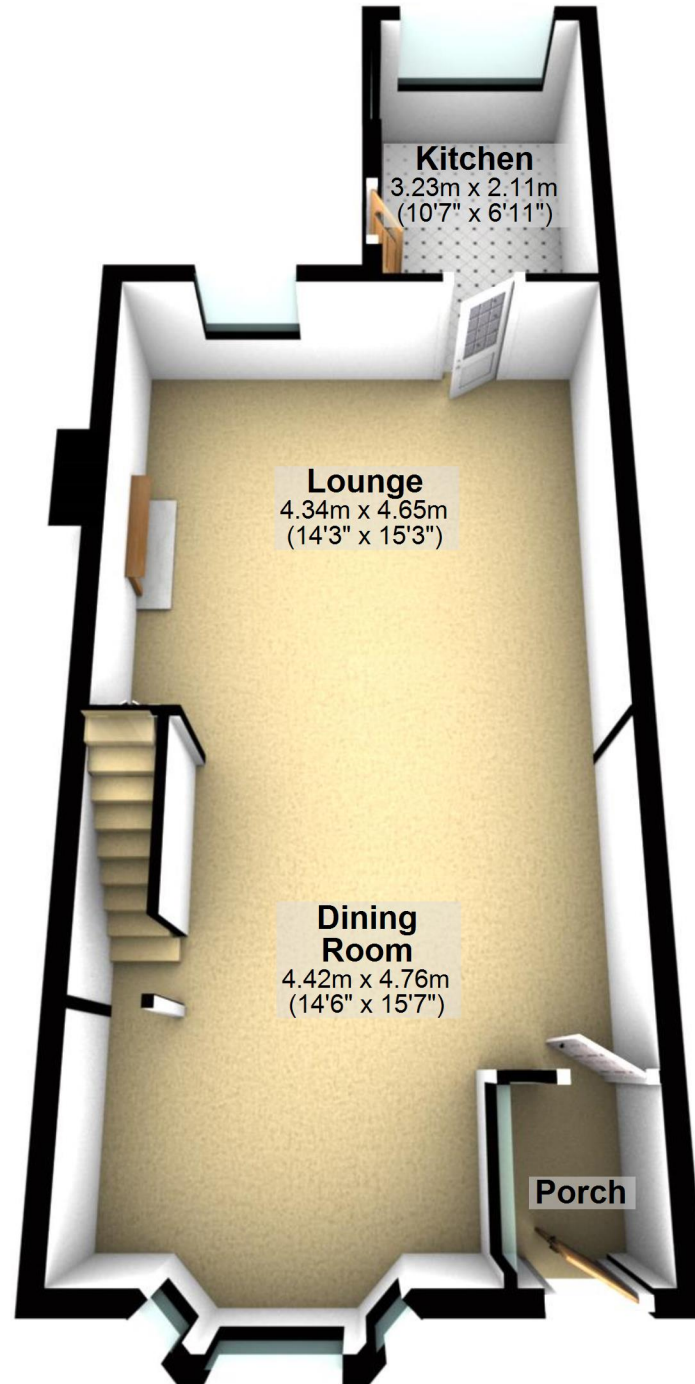
## Second Floor

Approx. 26.0 sq. metres (279.6 sq. feet)



# Ground Floor

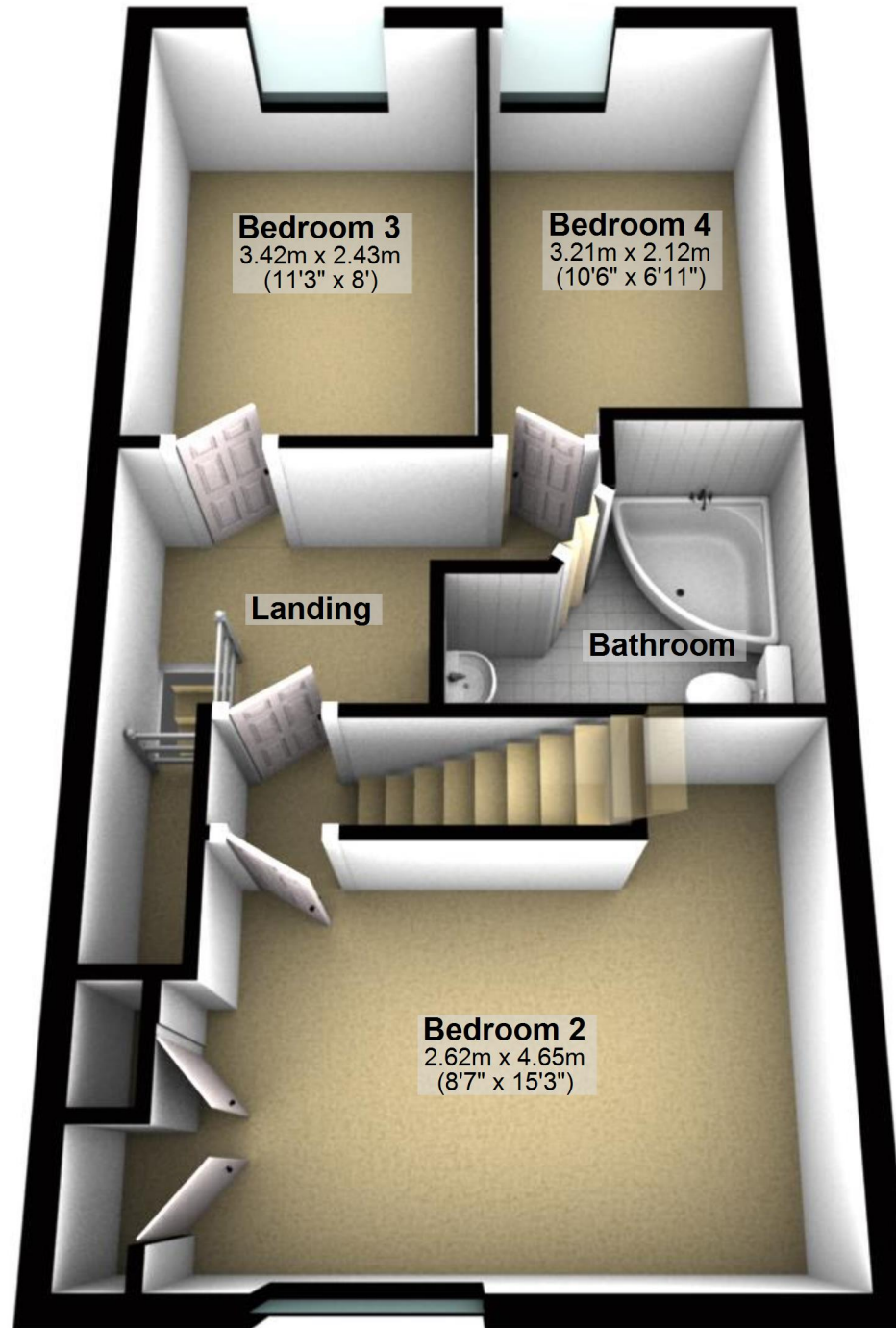
Approx. 48.7 sq. metres (524.0 sq. feet)



Total area: approx. 115.8 sq. metres (1246.3 sq. feet)

# First Floor

Approx. 41.1 sq. metres (442.7 sq. feet)



**Bedroom 3**  
3.42m x 2.43m  
(11'3" x 8')

**Bedroom 4**  
3.21m x 2.12m  
(10'6" x 6'11")

**Landing**

**Bathroom**

**Bedroom 2**  
2.62m x 4.65m  
(8'7" x 15'3")

## Second Floor

Approx. 26.0 sq. metres (279.6 sq. feet)

