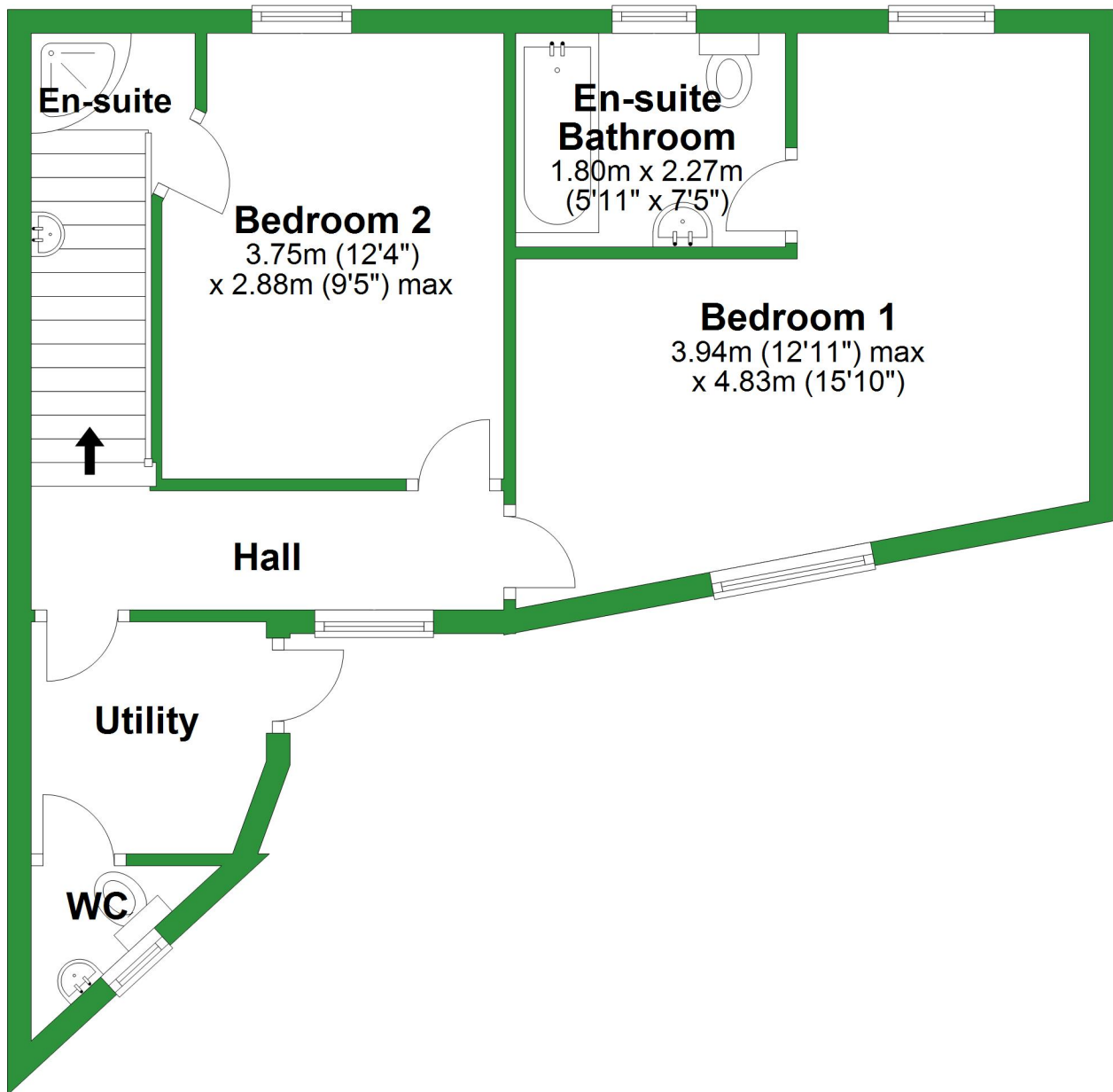


# Ground Floor

Approx. 46.3 sq. metres (498.8 sq. feet)



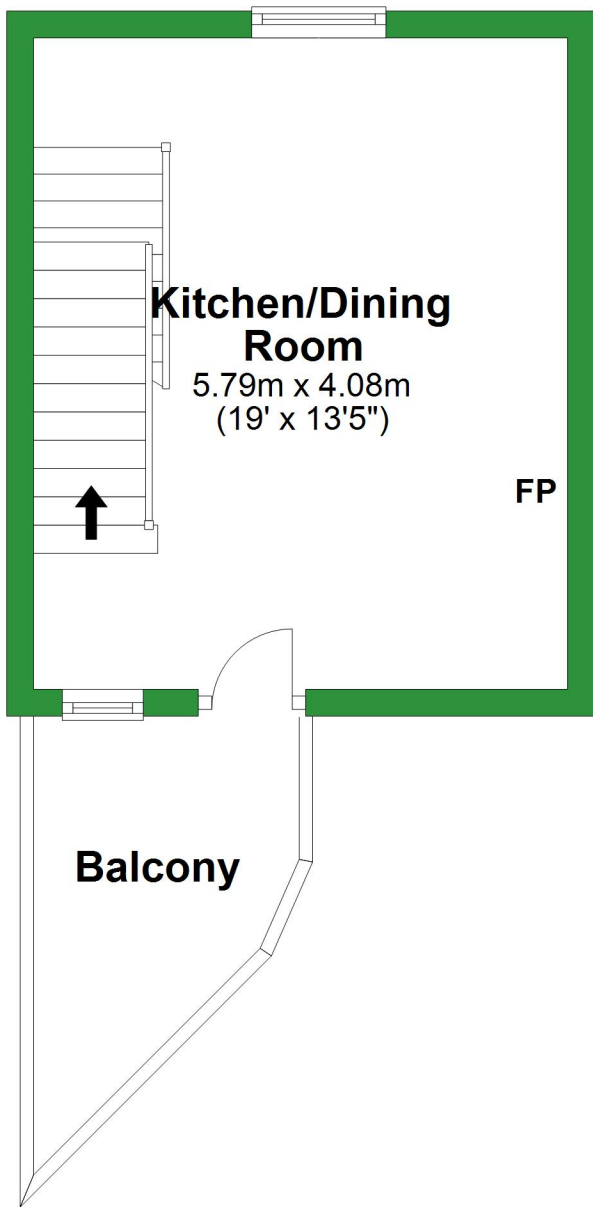
Total area: approx. 85.0 sq. metres (914.7 sq. feet)

For illustrative purposes only. Not to scale. All sizes are approximate.

Plan produced using PlanUp.

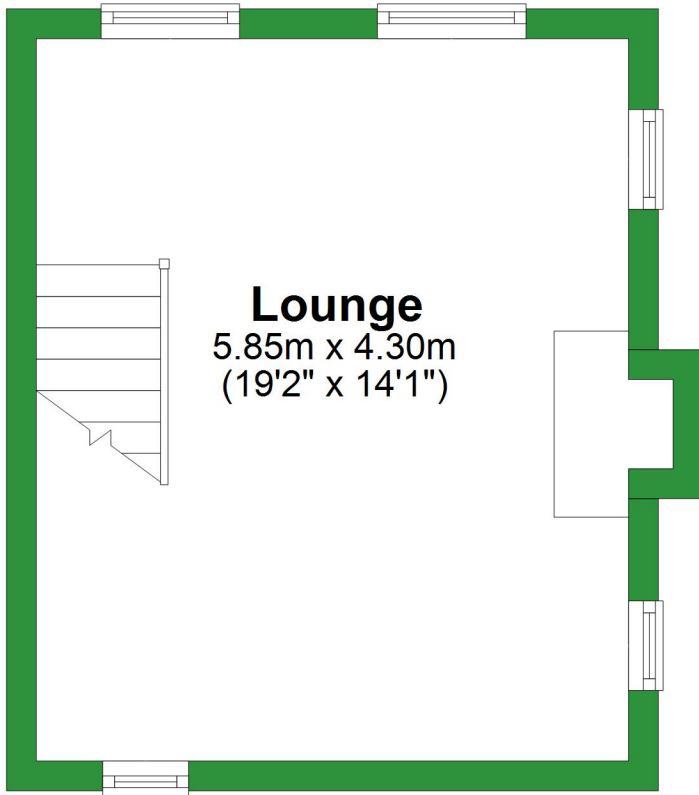
# First Floor

Approx. 19.3 sq. metres (208.0 sq. feet)



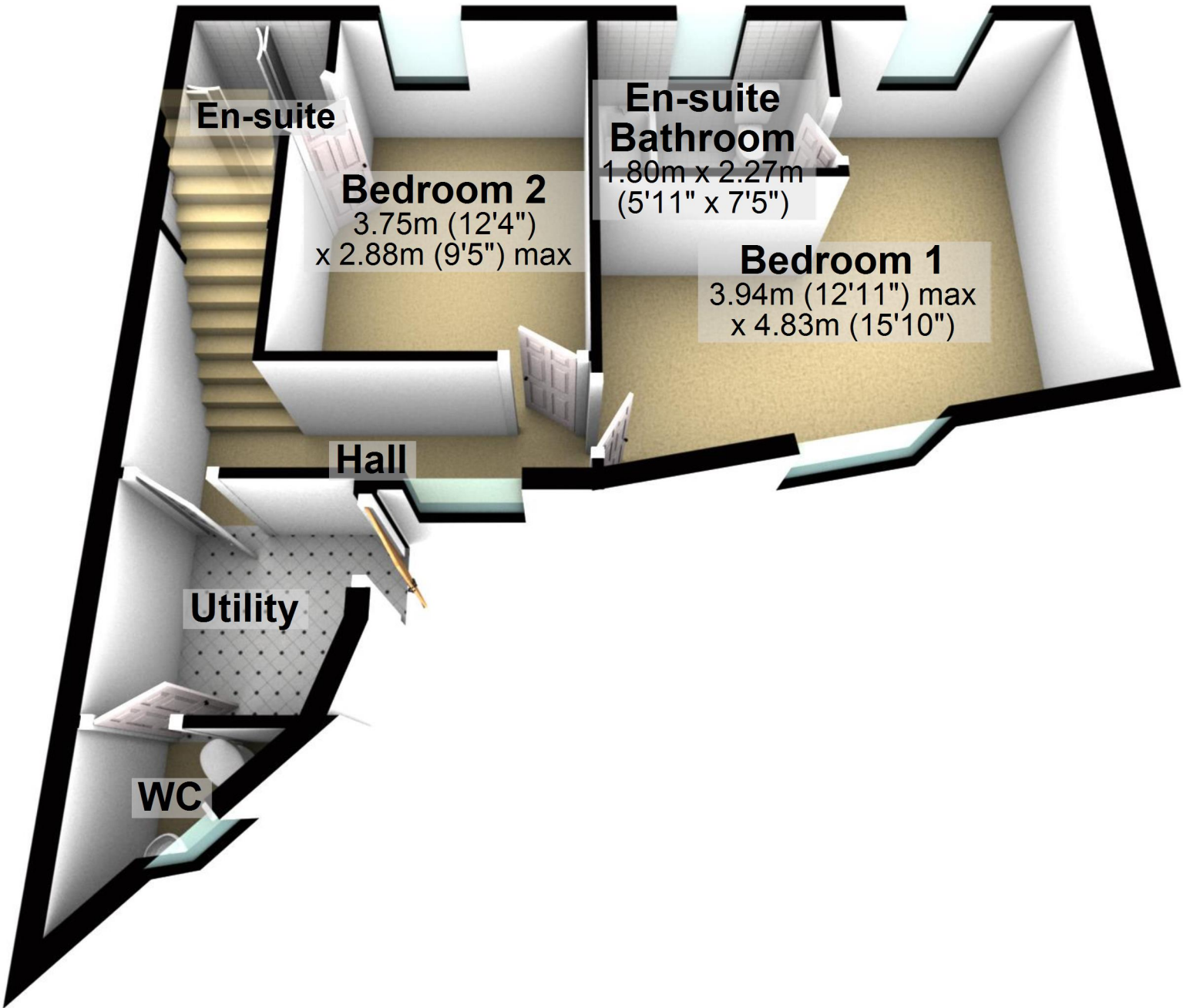
# Second Floor

Approx. 19.3 sq. metres (208.0 sq. feet)



# Ground Floor

Approx. 46.3 sq. metres (498.8 sq. feet)

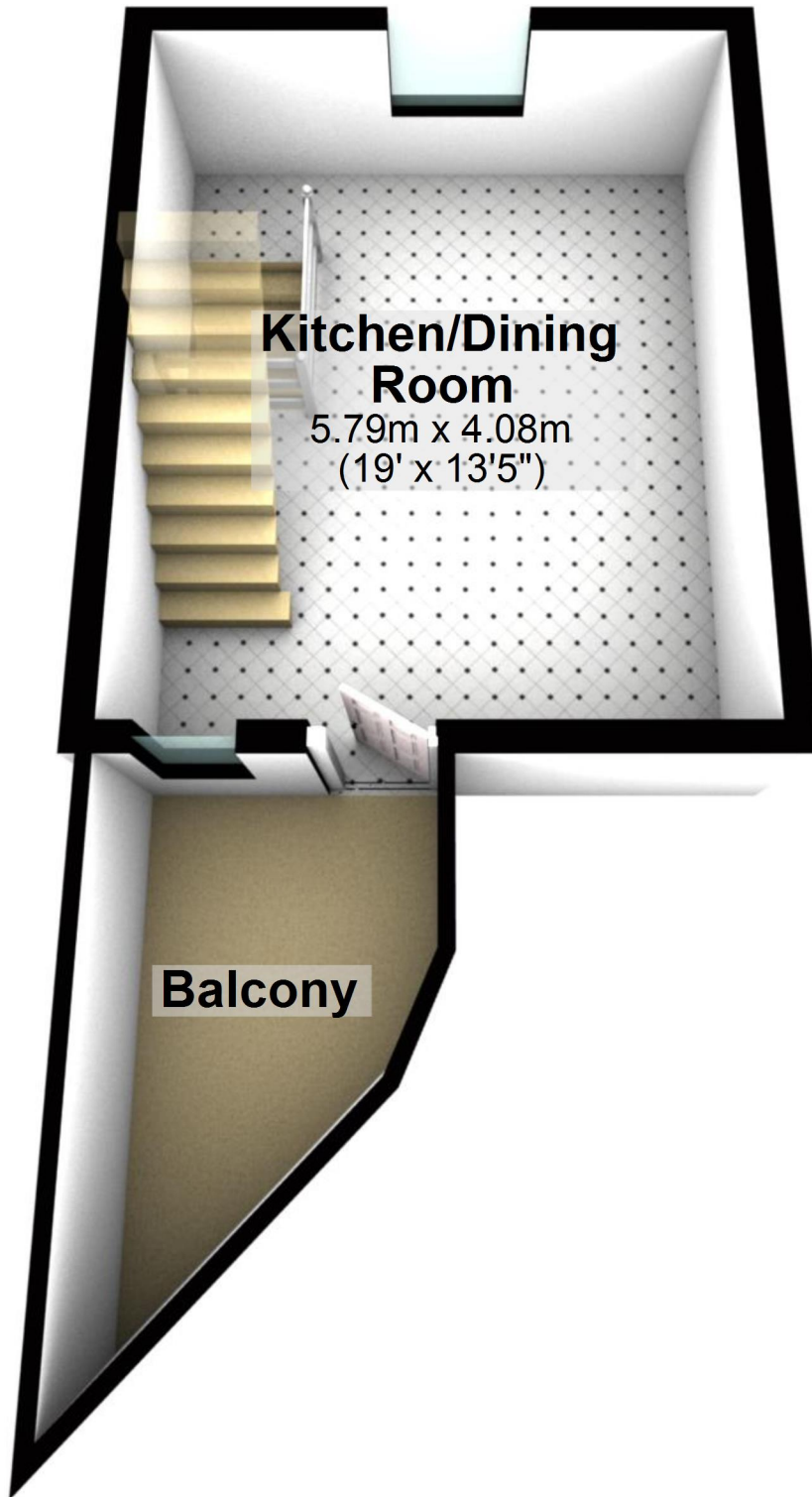


Total area: approx. 85.0 sq. metres (914.7 sq. feet)

For illustrative purposes only. Not to scale. All sizes are approximate.  
Plan produced using PlanUp.

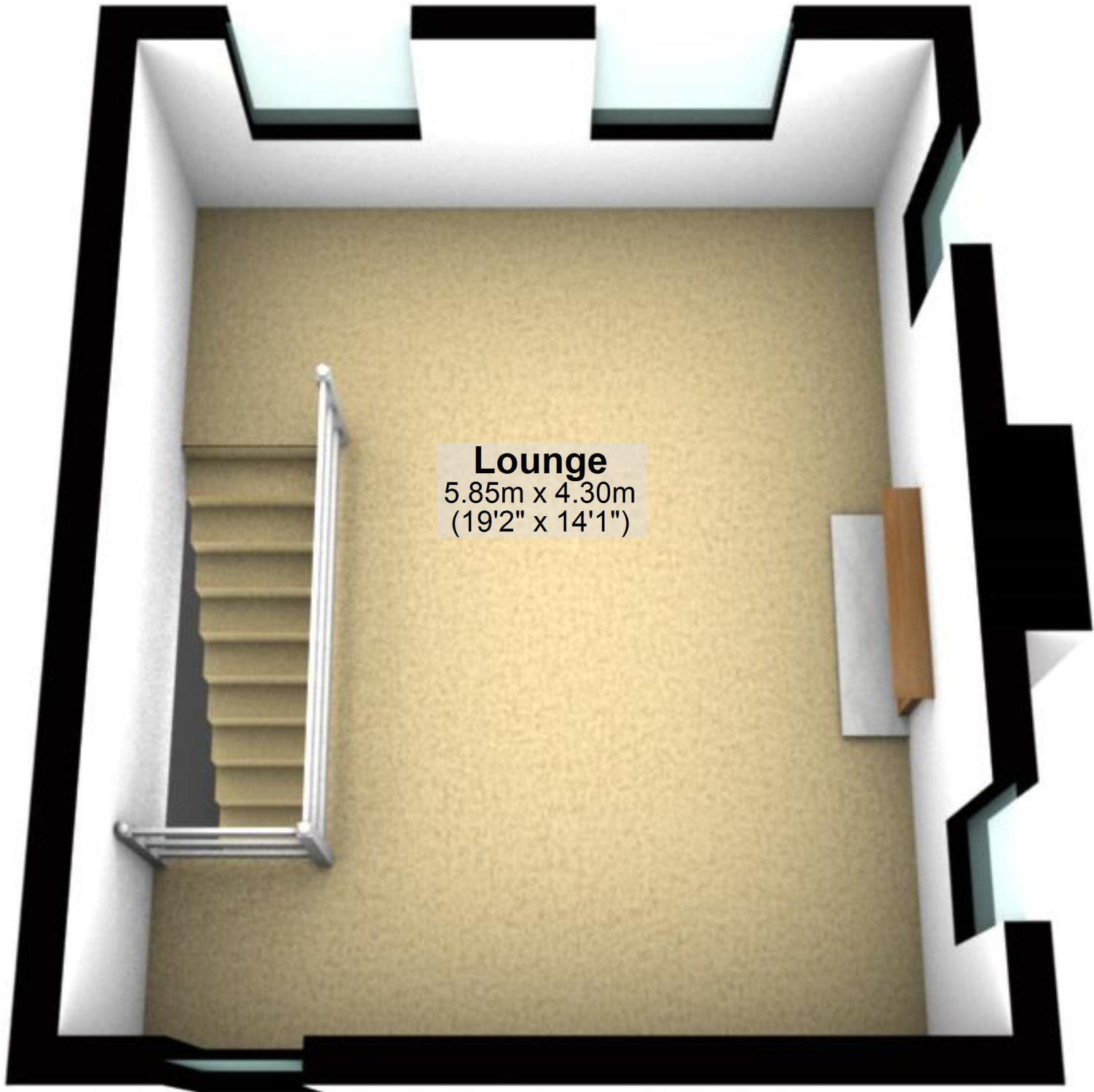
# First Floor

Approx. 19.3 sq. metres (208.0 sq. feet)



# Second Floor

Approx. 19.3 sq. metres (208.0 sq. feet)



## Lounge

5.85m x 4.30m  
(19'2" x 14'1")