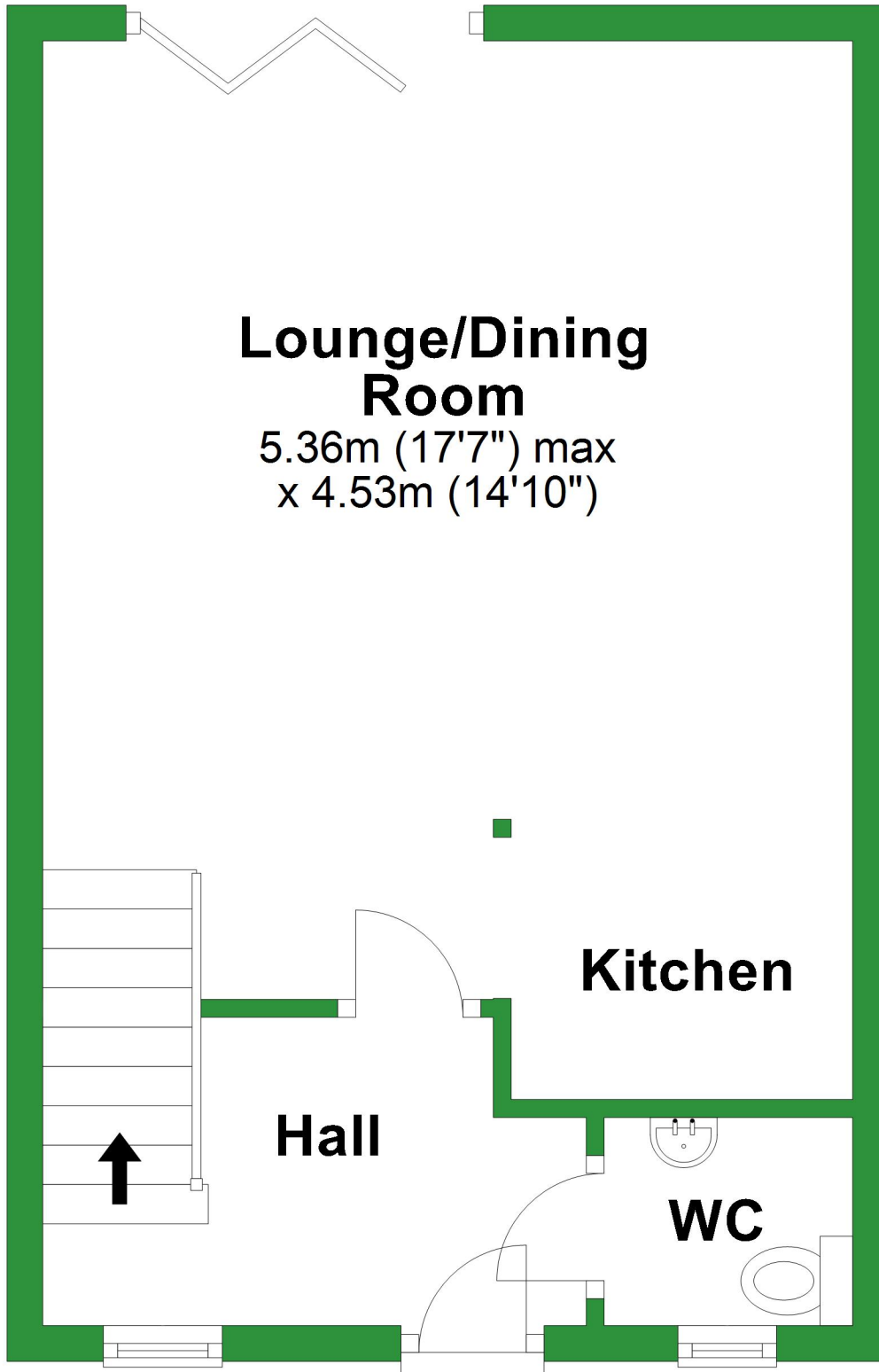


# Ground Floor

Approx. 33.9 sq. metres (365.3 sq. feet)



## Lounge/Dining Room

5.36m (17'7") max  
x 4.53m (14'10")

Kitchen

Hall

WC

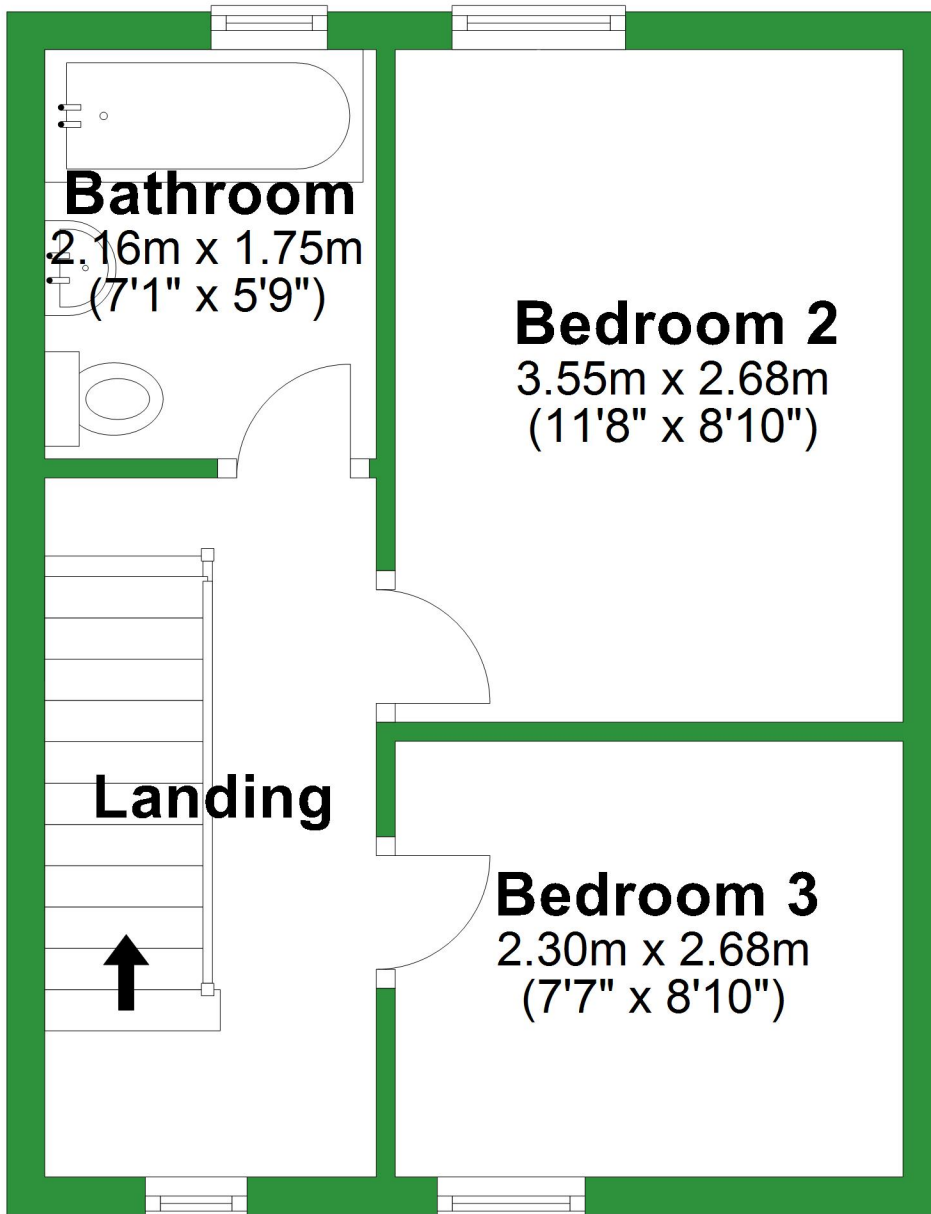
Total area: approx. 82.6 sq. metres (888.9 sq. feet)

For illustrative purposes only. Not to scale. All sizes are approximate.

Plan produced using PlanUp.

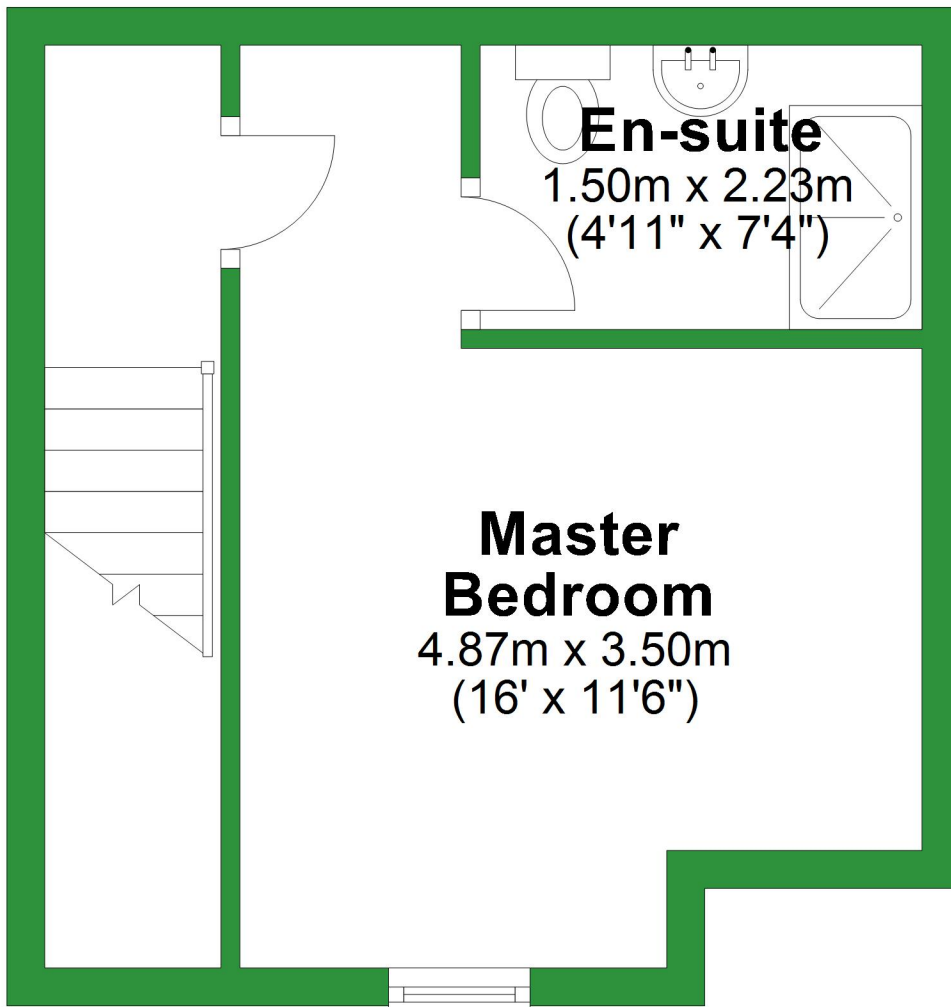
# First Floor

Approx. 27.0 sq. metres (290.1 sq. feet)



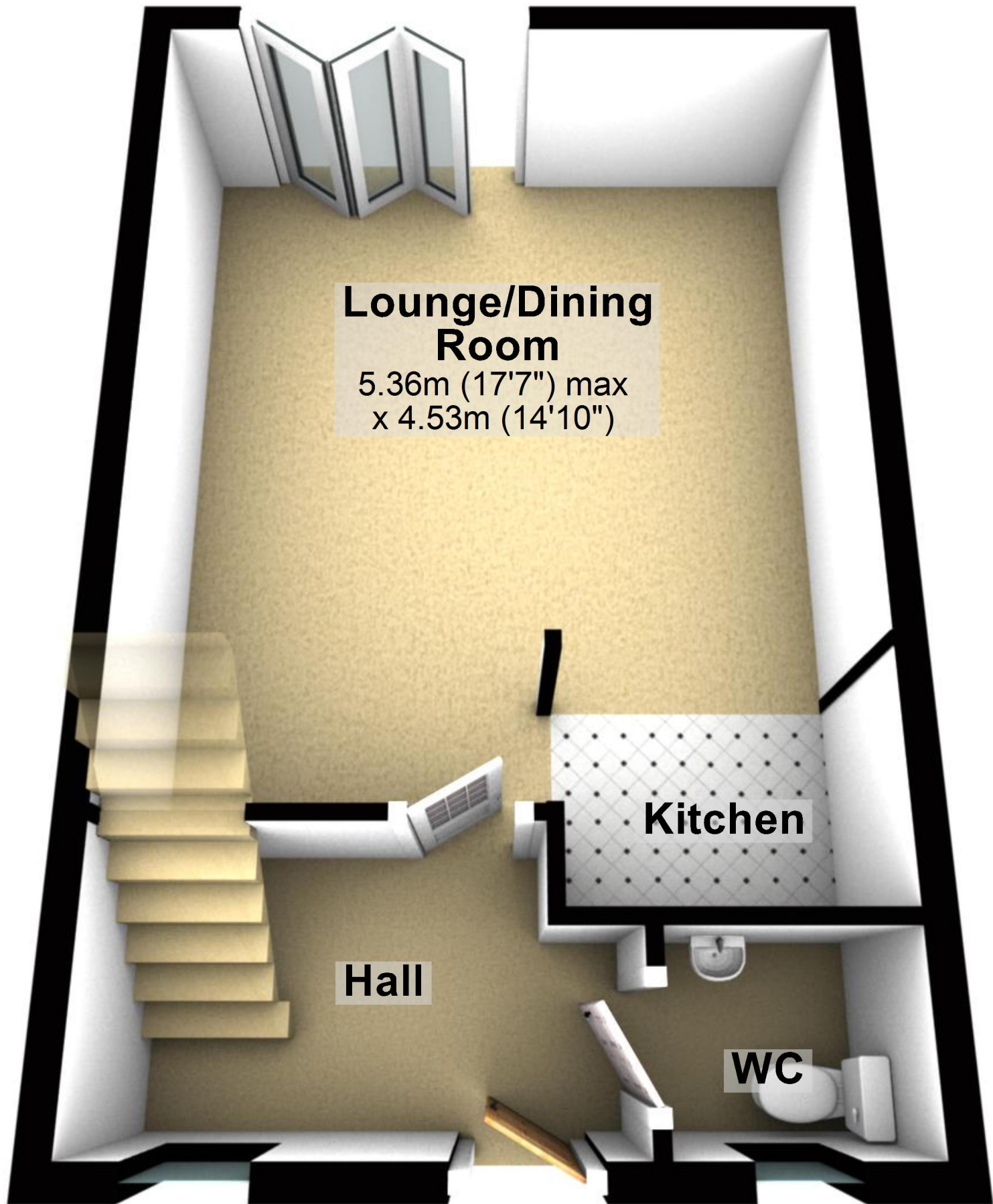
# Second Floor

Approx. 21.7 sq. metres (233.5 sq. feet)



# Ground Floor

Approx. 33.9 sq. metres (365.3 sq. feet)



**Lounge/Dining  
Room**

5.36m (17'7") max  
x 4.53m (14'10")

**Kitchen**

**Hall**

**WC**

Total area: approx. 82.6 sq. metres (888.9 sq. feet)

For illustrative purposes only. Not to scale. All sizes are approximate.

Plan produced using PlanUp.

# First Floor

Approx. 27.0 sq. metres (290.1 sq. feet)

## Bathroom

2.16m x 1.75m  
(7'1" x 5'9")

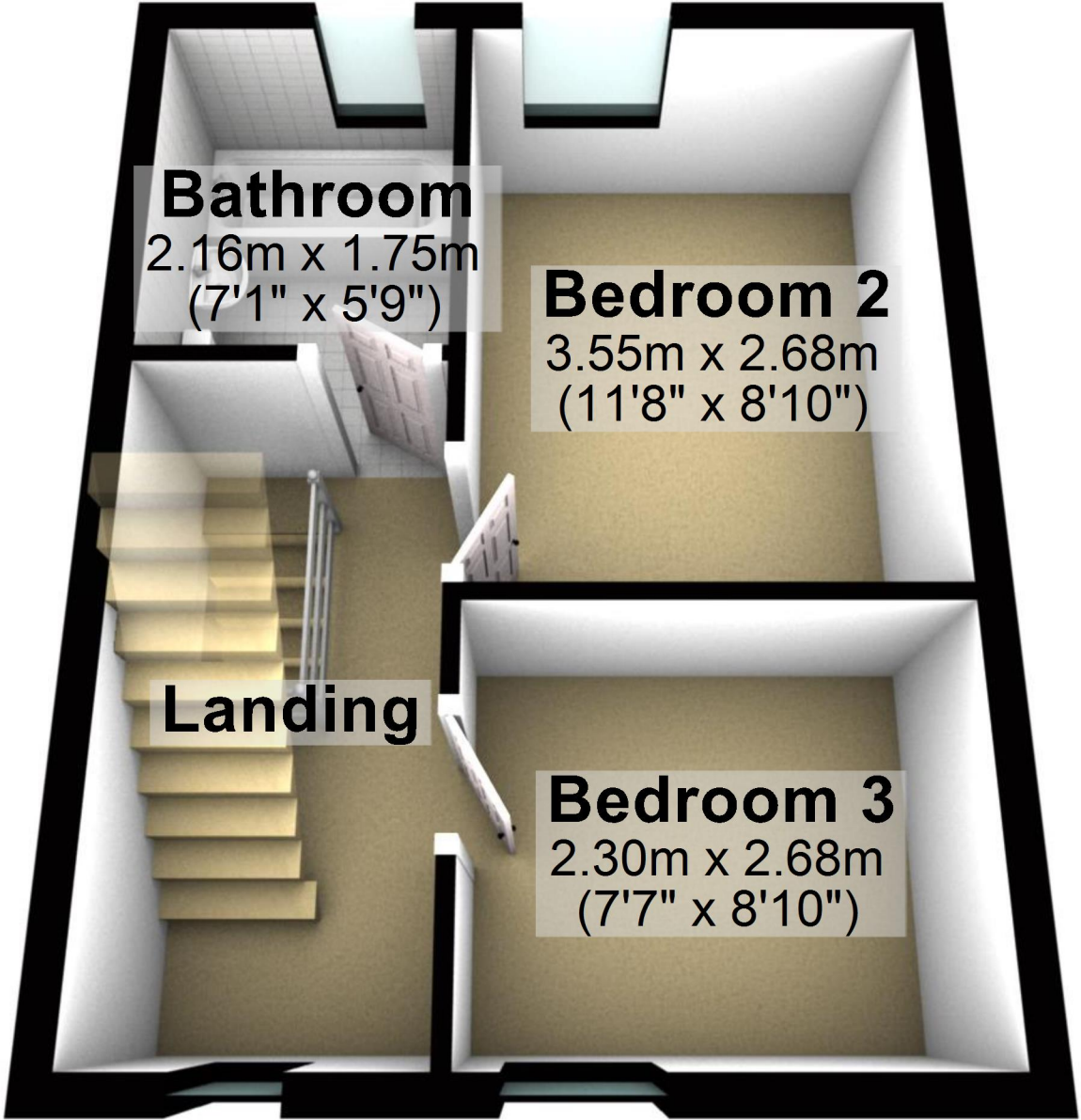
## Bedroom 2

3.55m x 2.68m  
(11'8" x 8'10")

## Landing

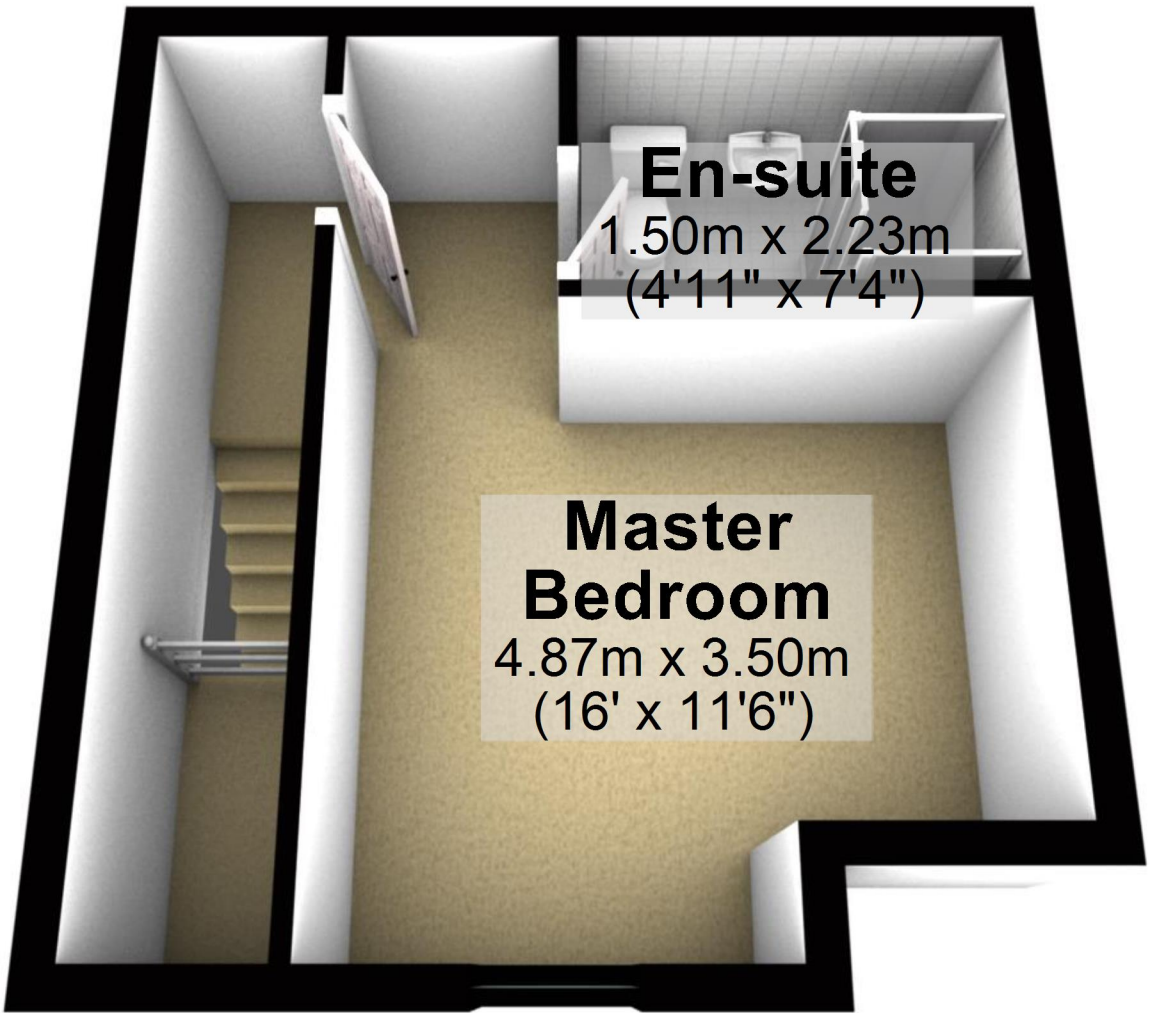
## Bedroom 3

2.30m x 2.68m  
(7'7" x 8'10")



# Second Floor

Approx. 21.7 sq. metres (233.5 sq. feet)



## En-suite

1.50m x 2.23m  
(4'11" x 7'4")

## Master Bedroom

4.87m x 3.50m  
(16' x 11'6")