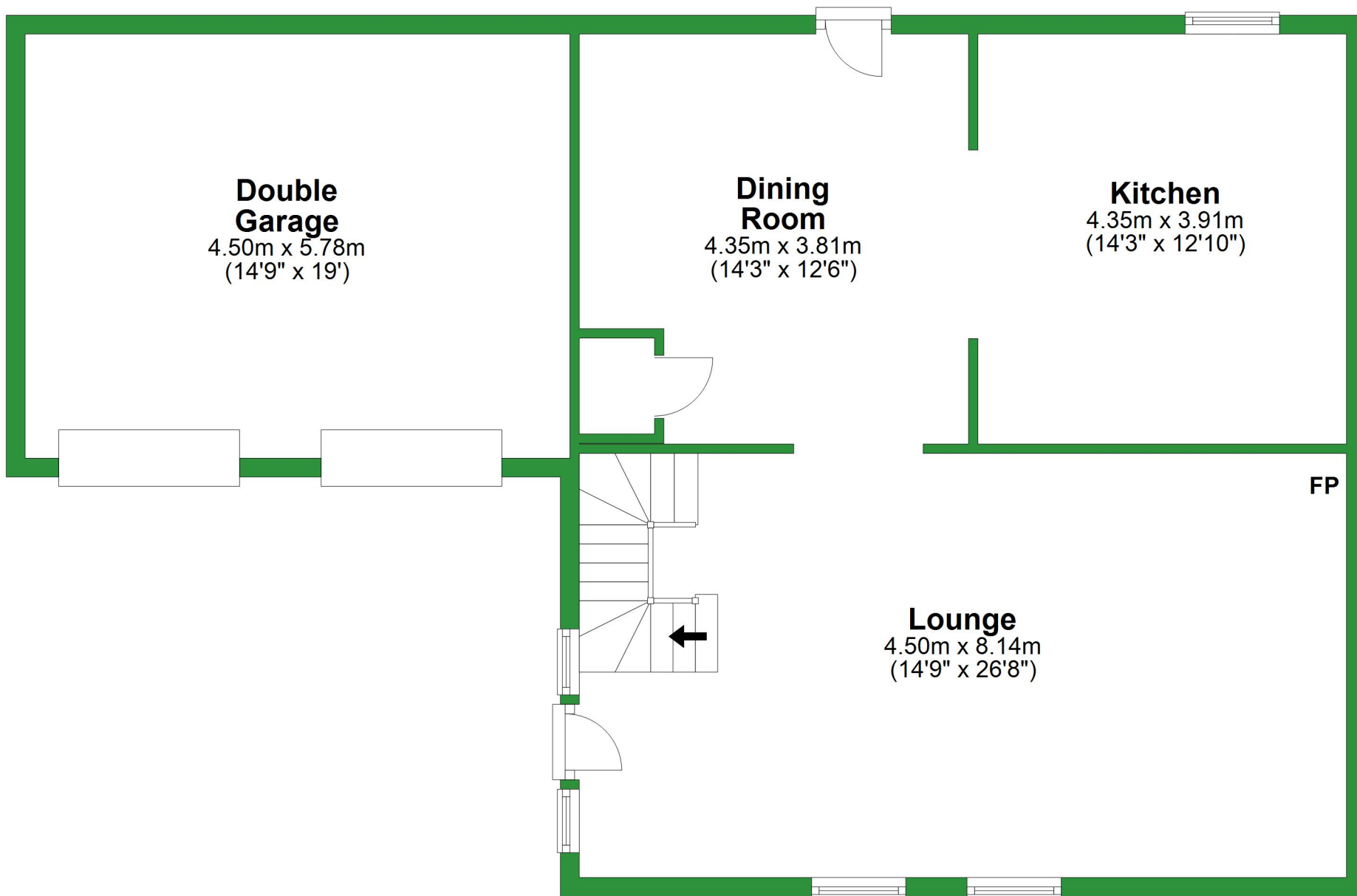


# Ground Floor

Approx. 99.3 sq. metres (1069.0 sq. feet)



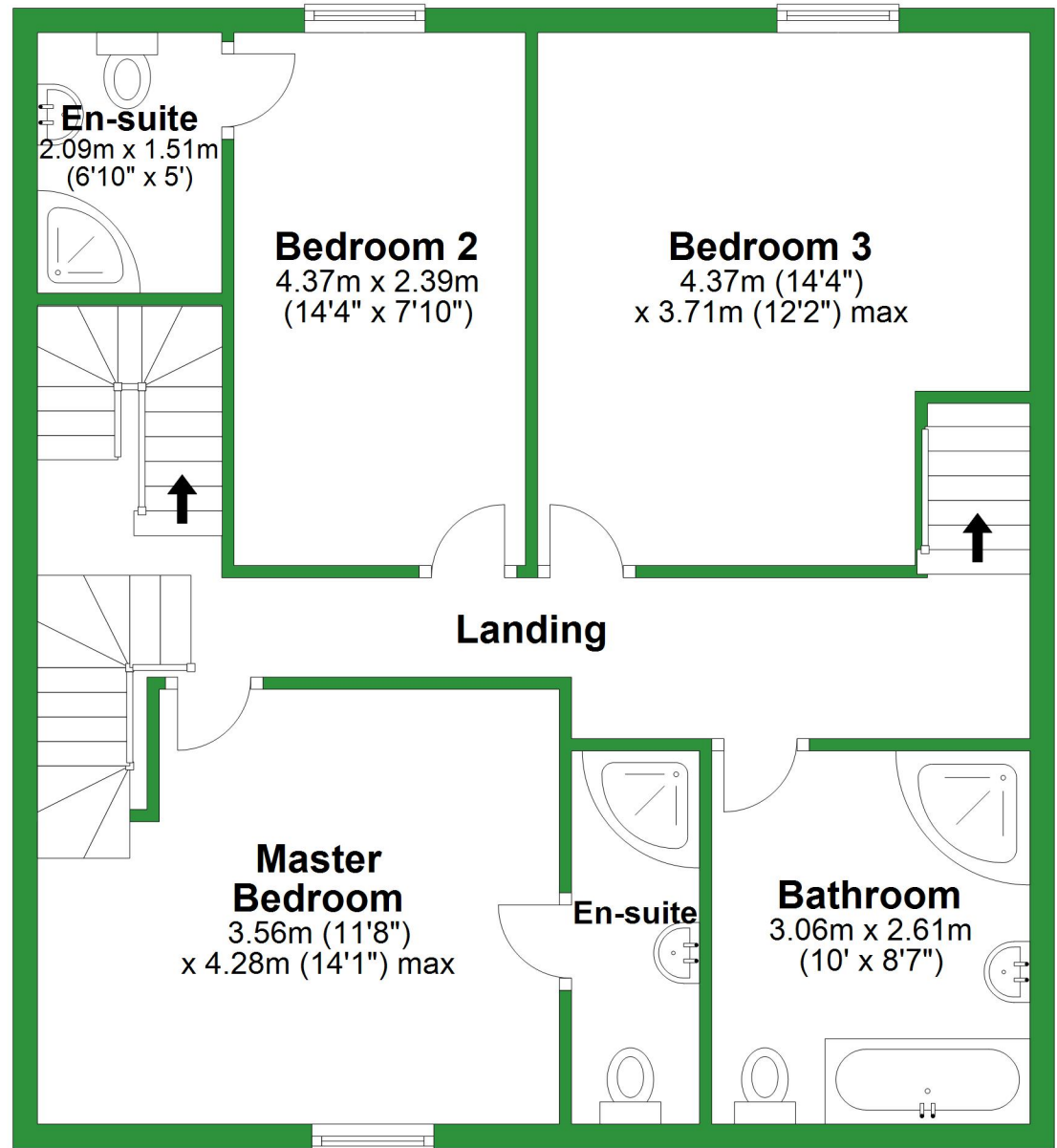
Total area: approx. 243.3 sq. metres (2619.1 sq. feet)

For illustrative purposes only. Not to scale. All sizes are approximate.

Plan produced using PlanUp.

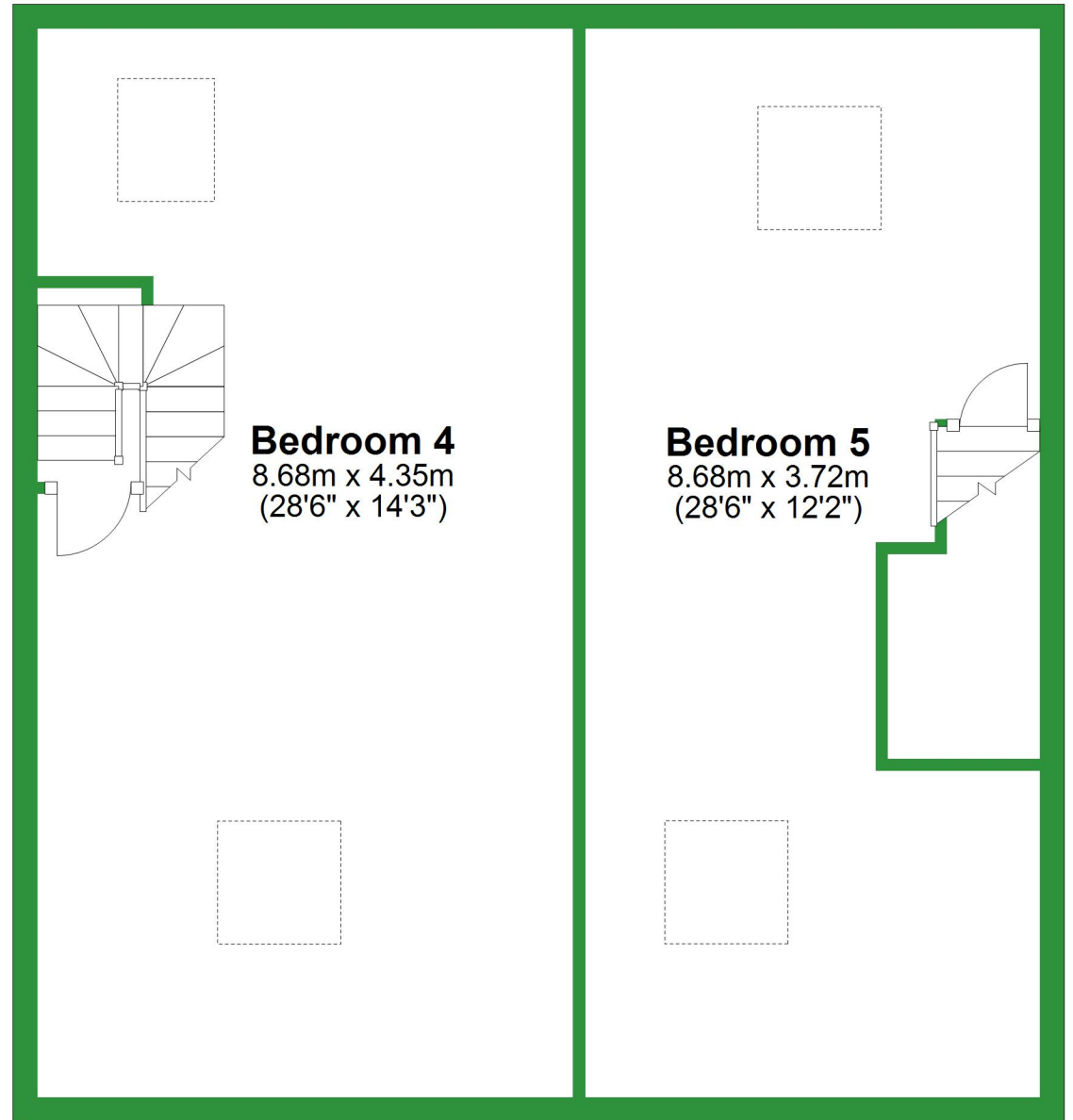
# First Floor

Approx. 72.9 sq. metres (784.2 sq. feet)



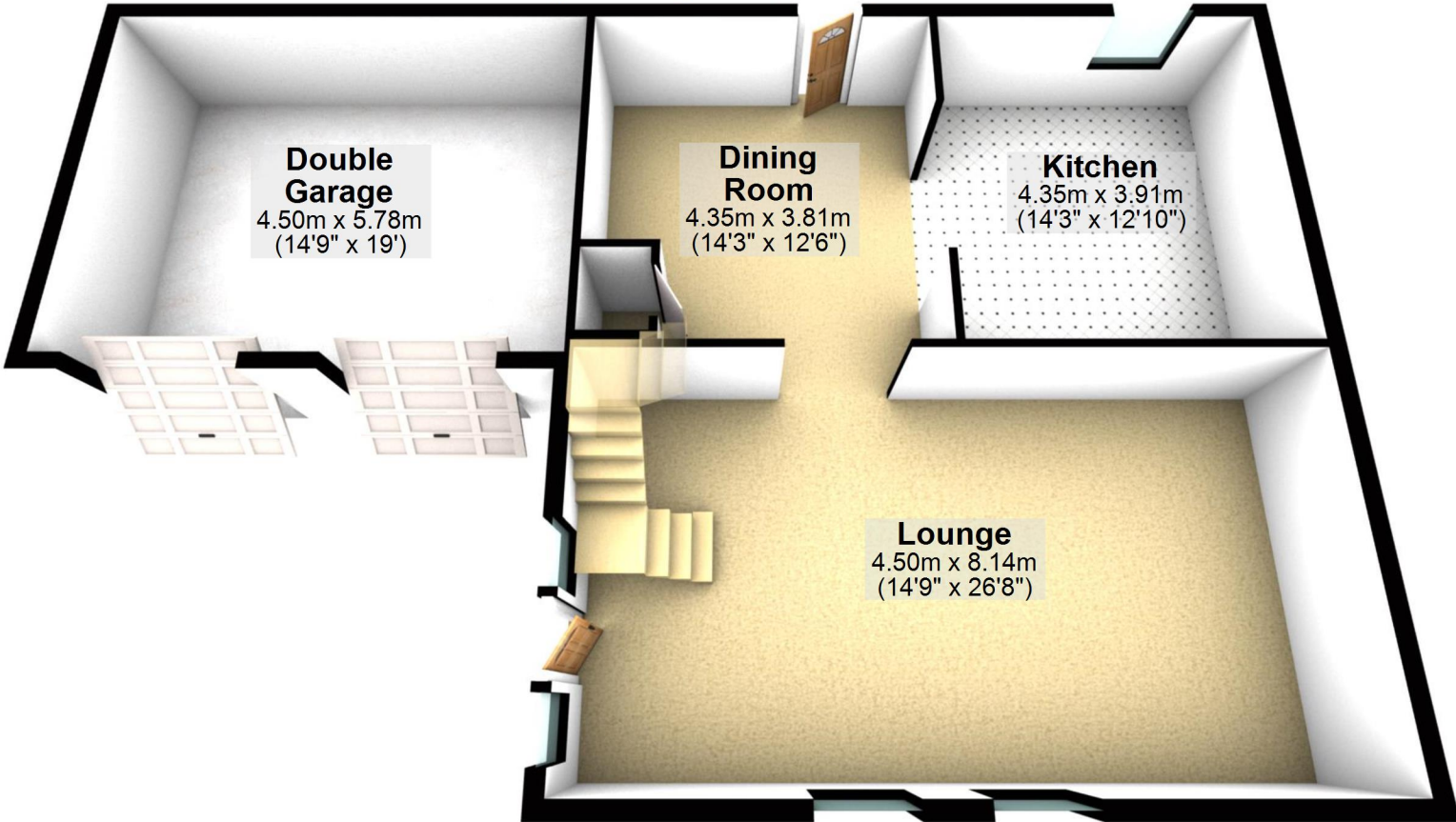
# Second Floor

Approx. 71.2 sq. metres (766.0 sq. feet)



## Ground Floor

Approx. 99.3 sq. metres (1069.0 sq. feet)

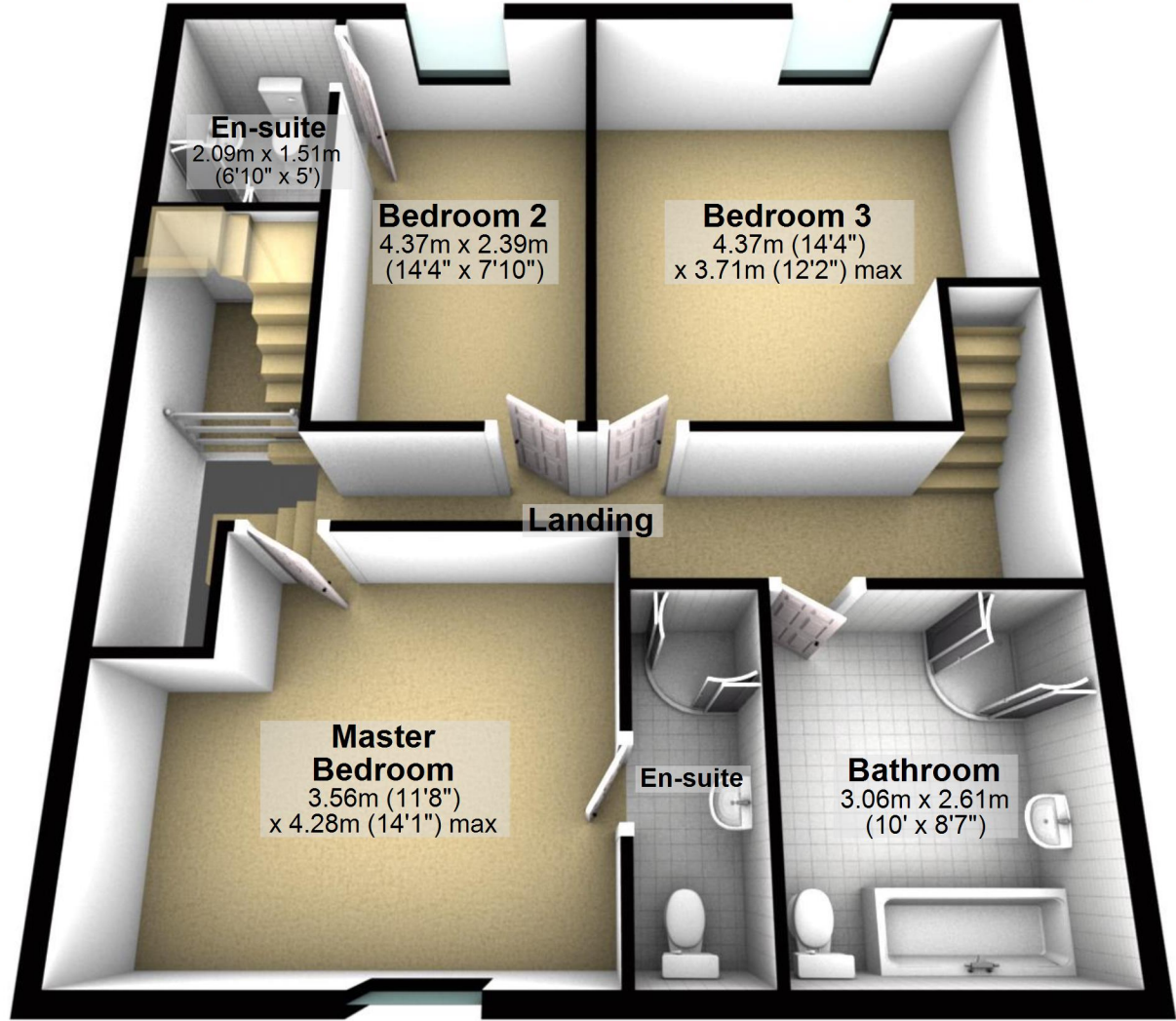


Total area: approx. 243.3 sq. metres (2619.1 sq. feet)

For illustrative purposes only. Not to scale. All sizes are approximate.  
Plan produced using PlanUp.

# First Floor

Approx. 72.9 sq. metres (784.2 sq. feet)



**En-suite**  
2.09m x 1.51m  
(6'10" x 5')

**Bedroom 2**  
4.37m x 2.39m  
(14'4" x 7'10")

**Bedroom 3**  
4.37m (14'4")  
x 3.71m (12'2") max

**Landing**

**Master Bedroom**  
3.56m (11'8")  
x 4.28m (14'1") max

**En-suite**

**Bathroom**  
3.06m x 2.61m  
(10' x 8'7")

## Second Floor

Approx. 71.2 sq. metres (766.0 sq. feet)

