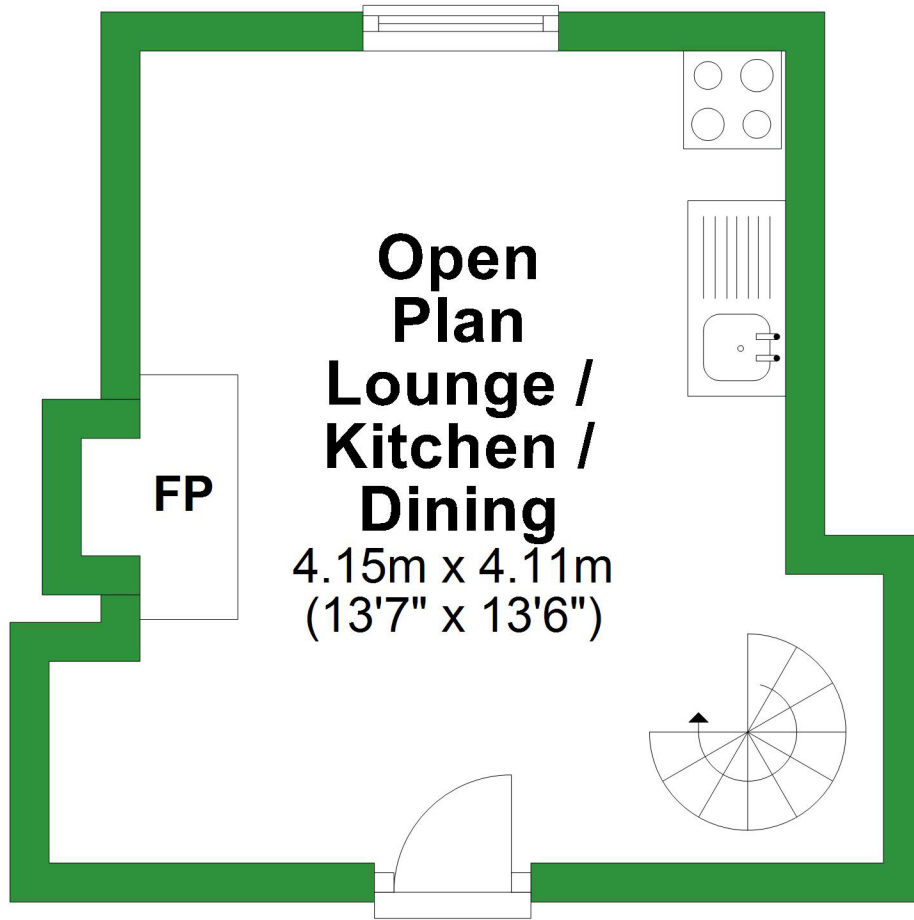


Approx. 15.2 sq. metres (163.7 sq. feet)

First Floor



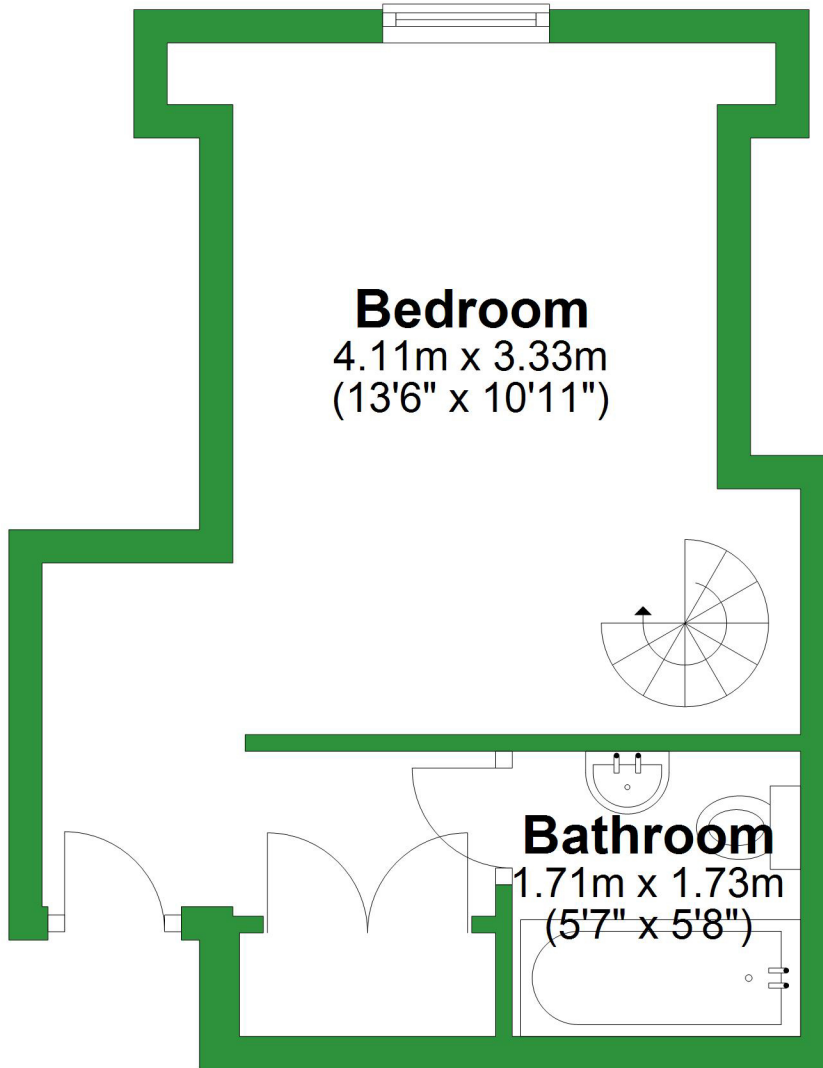
Total area: approx. 40.6 sq. metres (436.8 sq. feet)

For illustrative purposes only. Not to scale. All sizes are approximate.

Plan produced using PlanUp.

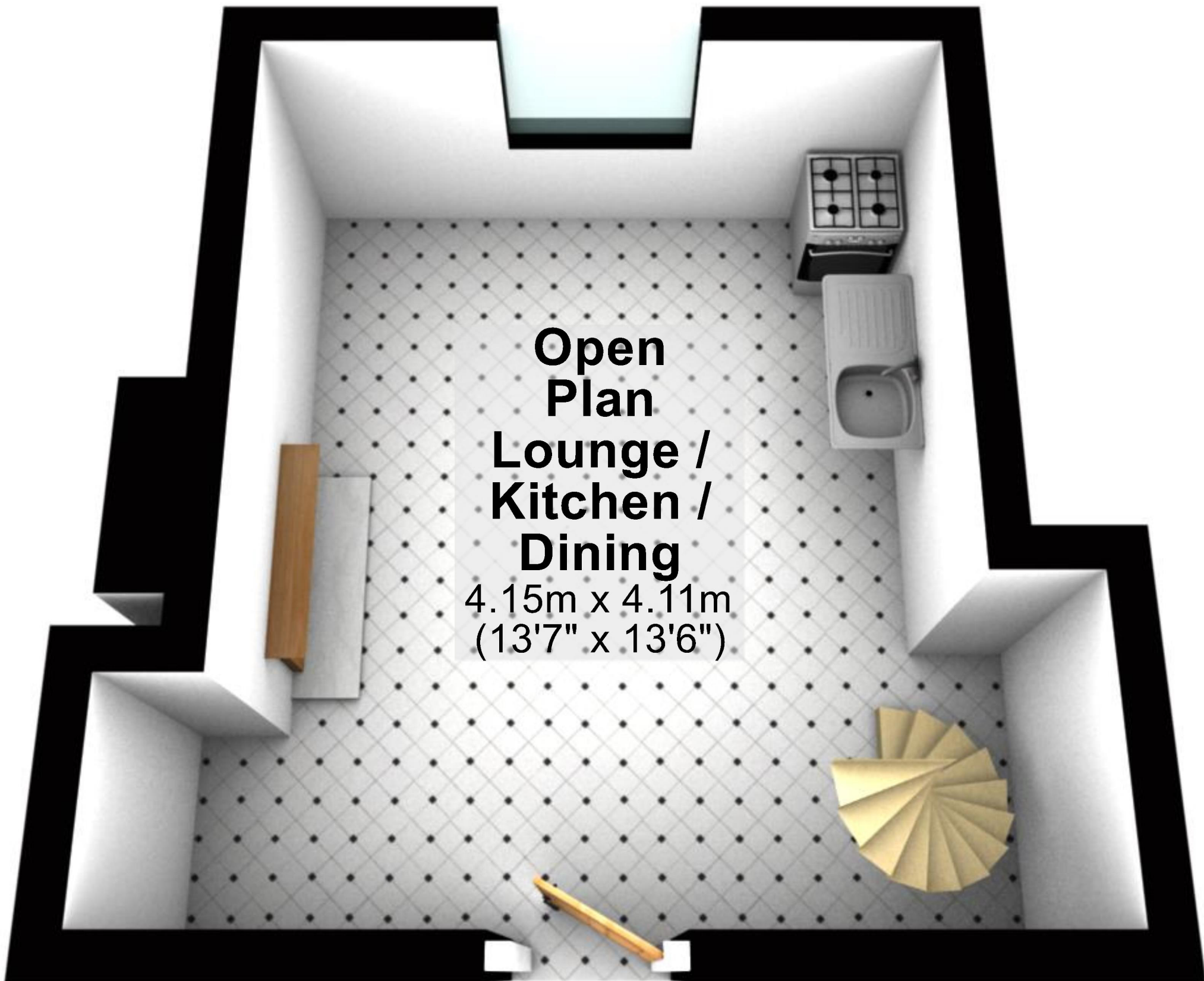
Second Floor

Approx. 25.4 sq. metres (273.1 sq. feet)



First Floor

Approx. 15.2 sq. metres (163.7 sq. feet)



Total area: approx. 40.6 sq. metres (436.8 sq. feet)

For illustrative purposes only. Not to scale. All sizes are approximate.

Plan produced using PlanUp.

Second Floor

Approx. 25.4 sq. metres (273.1 sq. feet)

