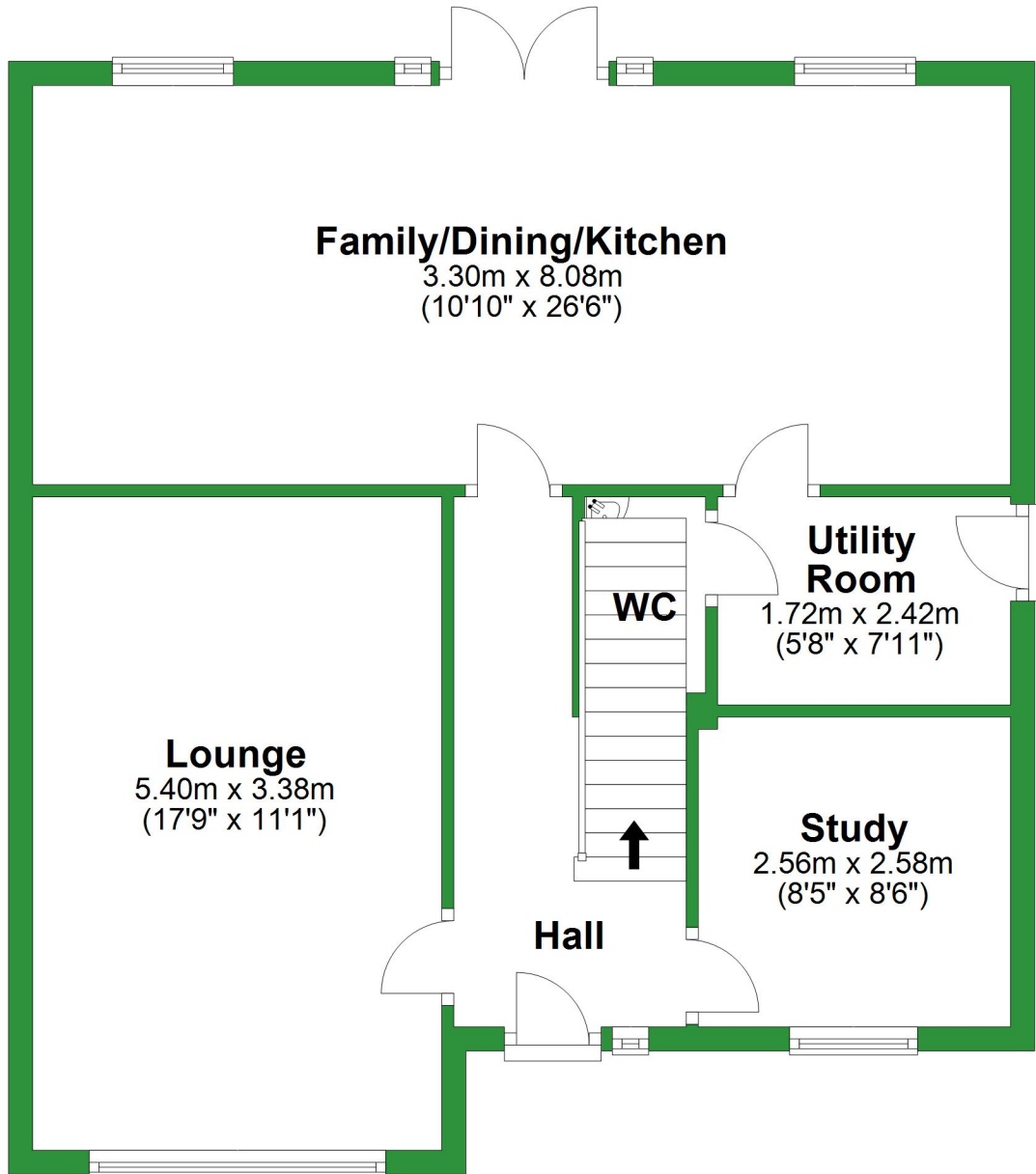


# Ground Floor

Approx. 66.3 sq. metres (713.8 sq. feet)



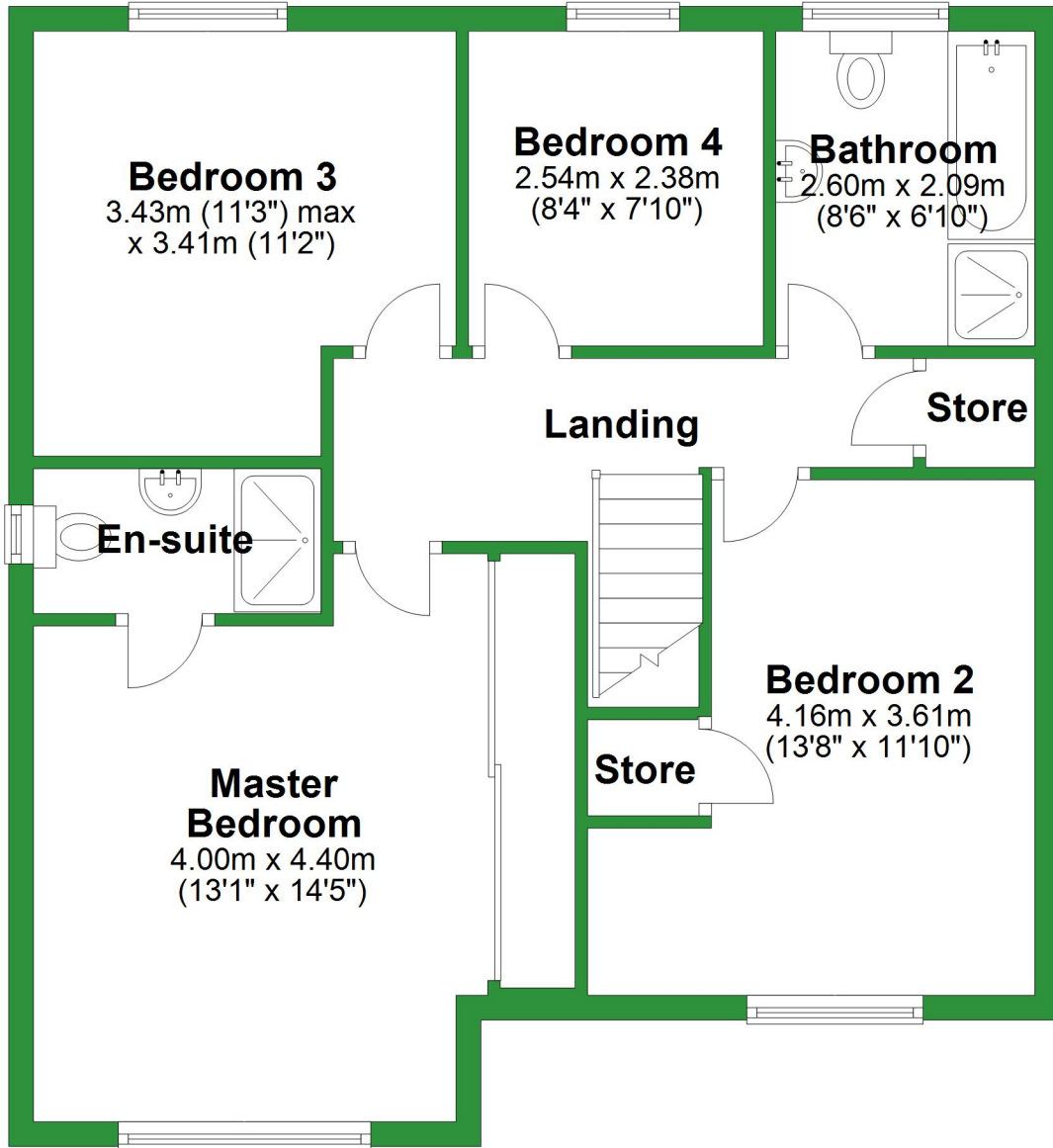
Total area: approx. 133.0 sq. metres (1432.0 sq. feet)

For illustrative purposes only. Not to scale. All sizes are approximate.

Plan produced using PlanUp.

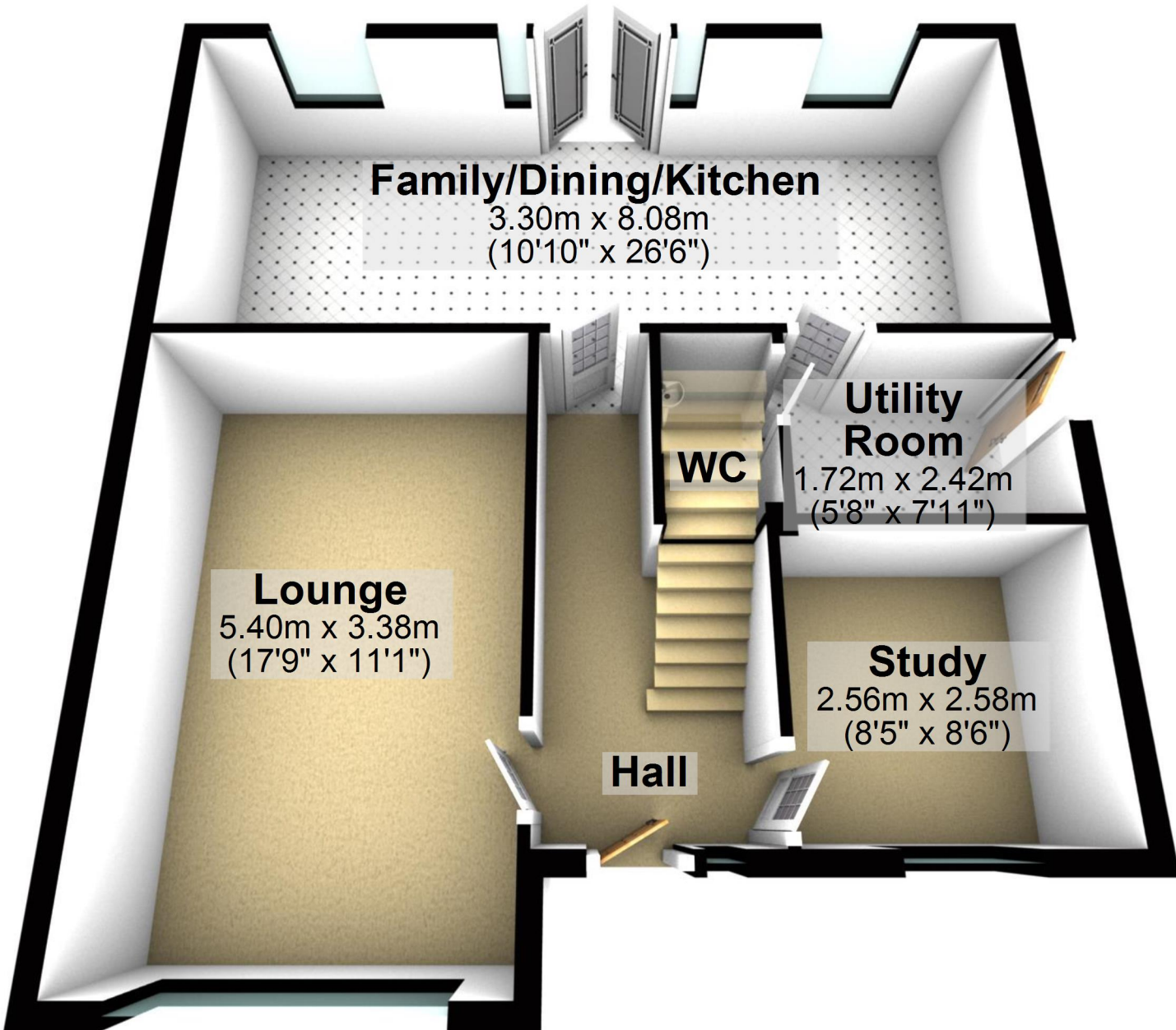
# First Floor

Approx. 66.7 sq. metres (718.3 sq. feet)



# Ground Floor

Approx. 66.3 sq. metres (713.8 sq. feet)



Total area: approx. 133.0 sq. metres (1432.0 sq. feet)

For illustrative purposes only. Not to scale. All sizes are approximate.

Plan produced using PlanUp.

# First Floor

Approx. 66.7 sq. metres (718.3 sq. feet)



**Bedroom 3**  
3.43m (11'3") max  
x 3.41m (11'2")

**Bedroom 4** **Bathroom**  
2.54m x 2.38m (8'4" x 7'10")  
2.60m x 2.09m (8'6" x 6'10")

**En-suite**

**Landing**

**Store**

**Master  
Bedroom**  
4.00m x 4.40m  
(13'1" x 14'5")

**Store**

**Bedroom 2**  
4.16m x 3.61m  
(13'8" x 11'10")