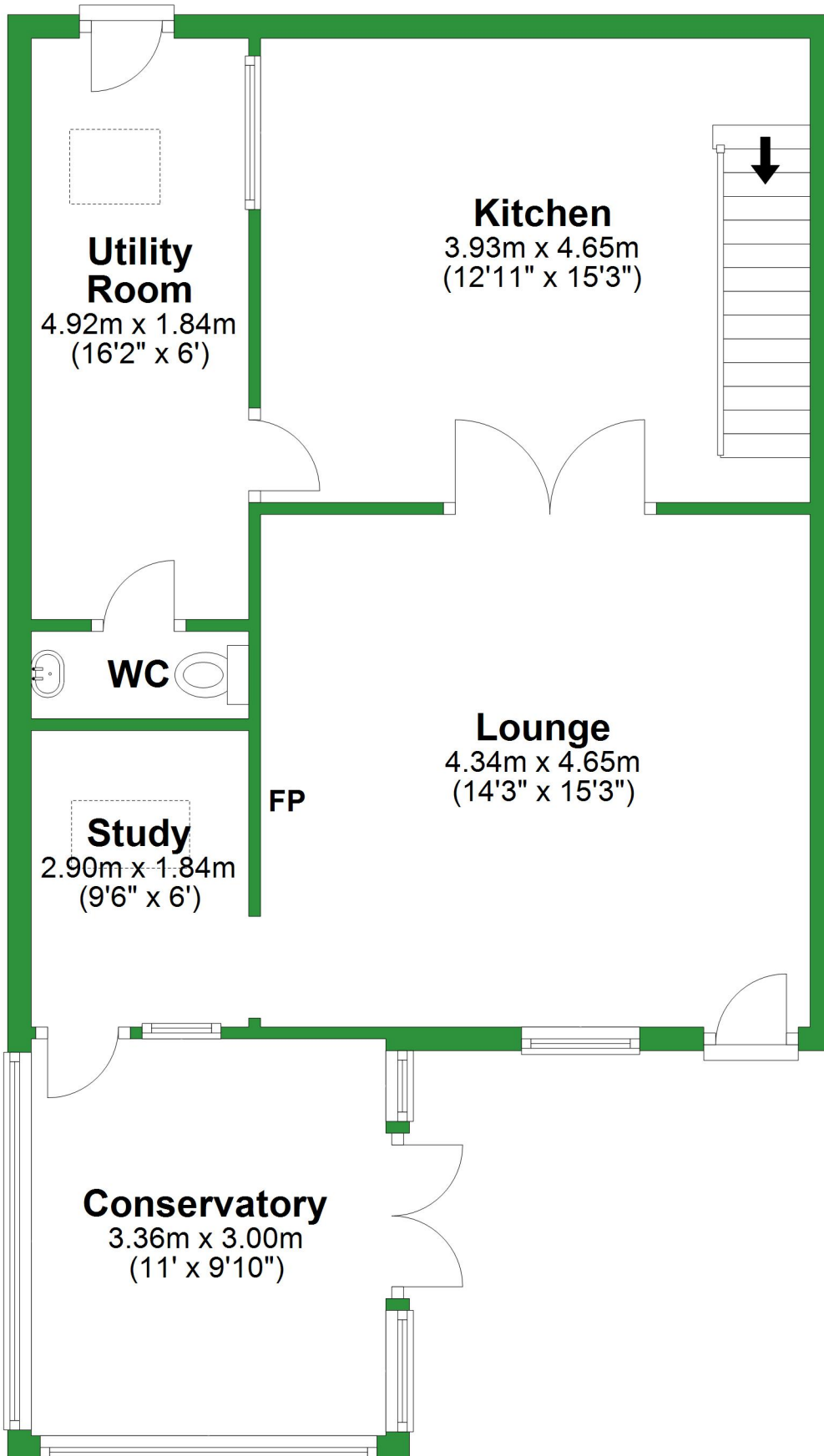


# Ground Floor

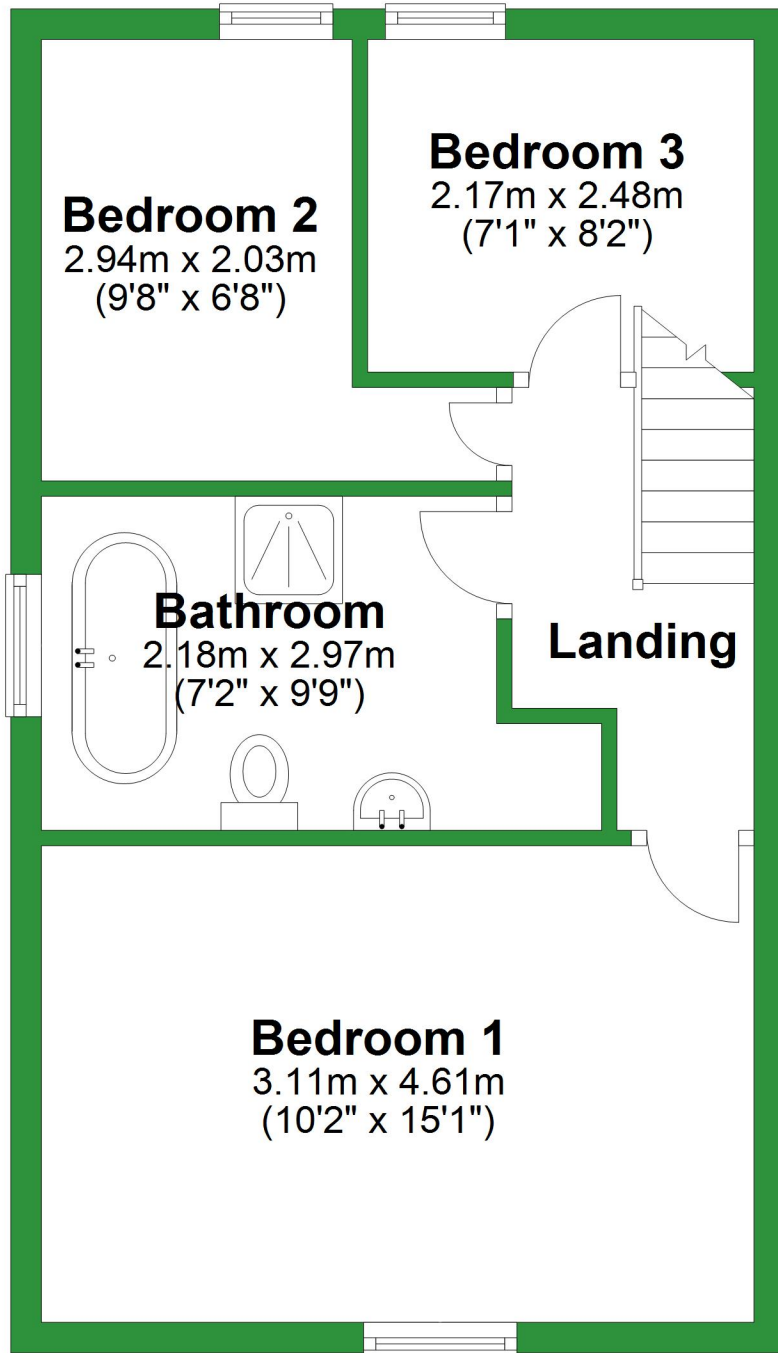
Approx. 65.5 sq. metres (705.4 sq. feet)



Total area: approx. 104.5 sq. metres (1124.3 sq. feet)

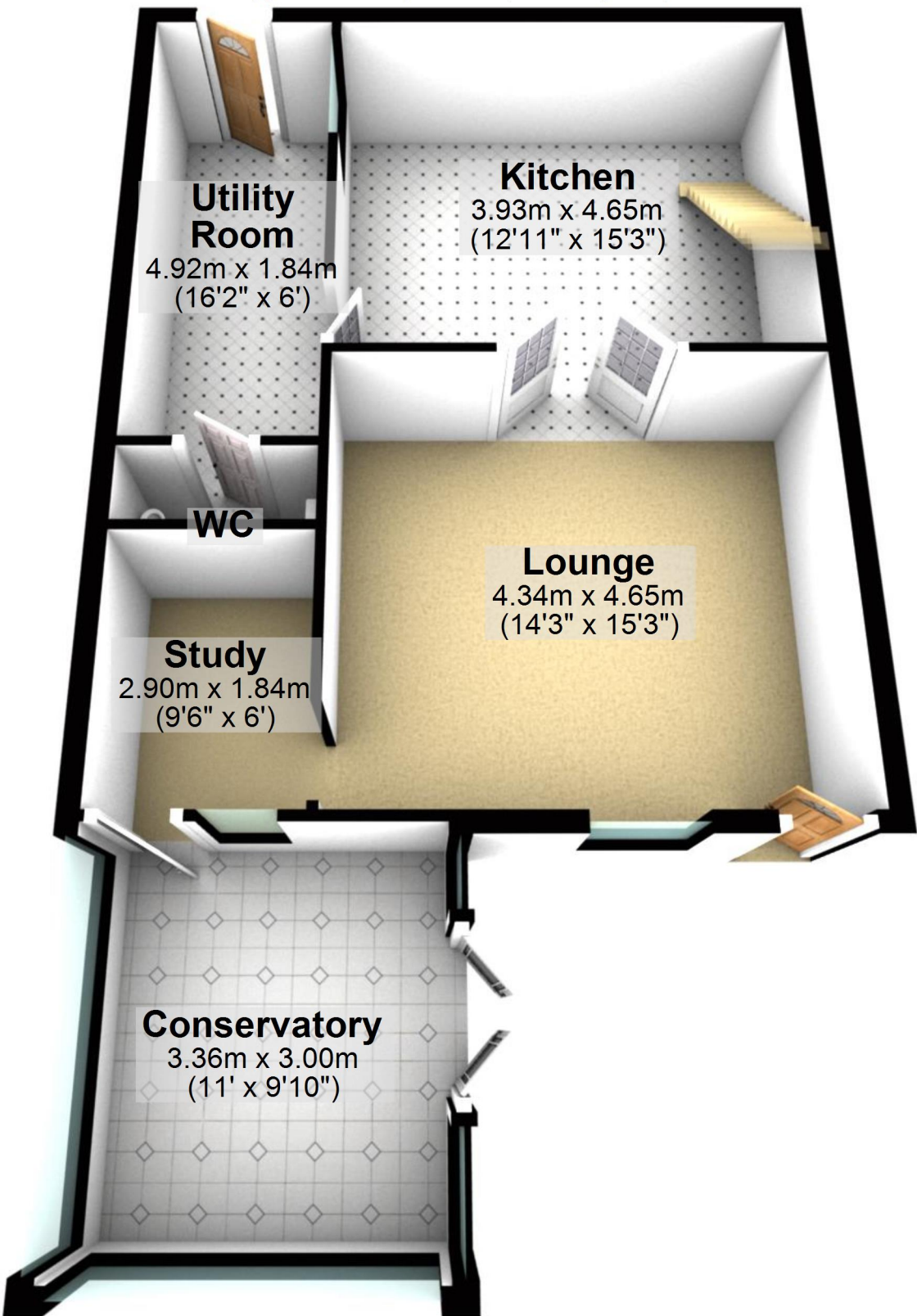
For illustrative purposes only. Not to scale. All sizes are approximate.  
Plan produced using PlanUp.

**First Floor**  
Approx. 38.9 sq. metres (418.9 sq. feet)



# Ground Floor

Approx. 65.5 sq. metres (705.4 sq. feet)



Total area: approx. 104.5 sq. metres (1124.3 sq. feet)

For illustrative purposes only. Not to scale. All sizes are approximate.

Plan produced using PlanUp.

# First Floor

Approx. 38.9 sq. metres (418.9 sq. feet)

**Bedroom 2**  
2.94m x 2.03m  
(9'8" x 6'8")

**Bedroom 3**  
2.17m x 2.48m  
(7'1" x 8'2")

**Bathroom**  
2.18m x 2.97m  
(7'2" x 9'9")

**Landing**

**Bedroom 1**  
3.11m x 4.61m  
(10'2" x 15'1")

