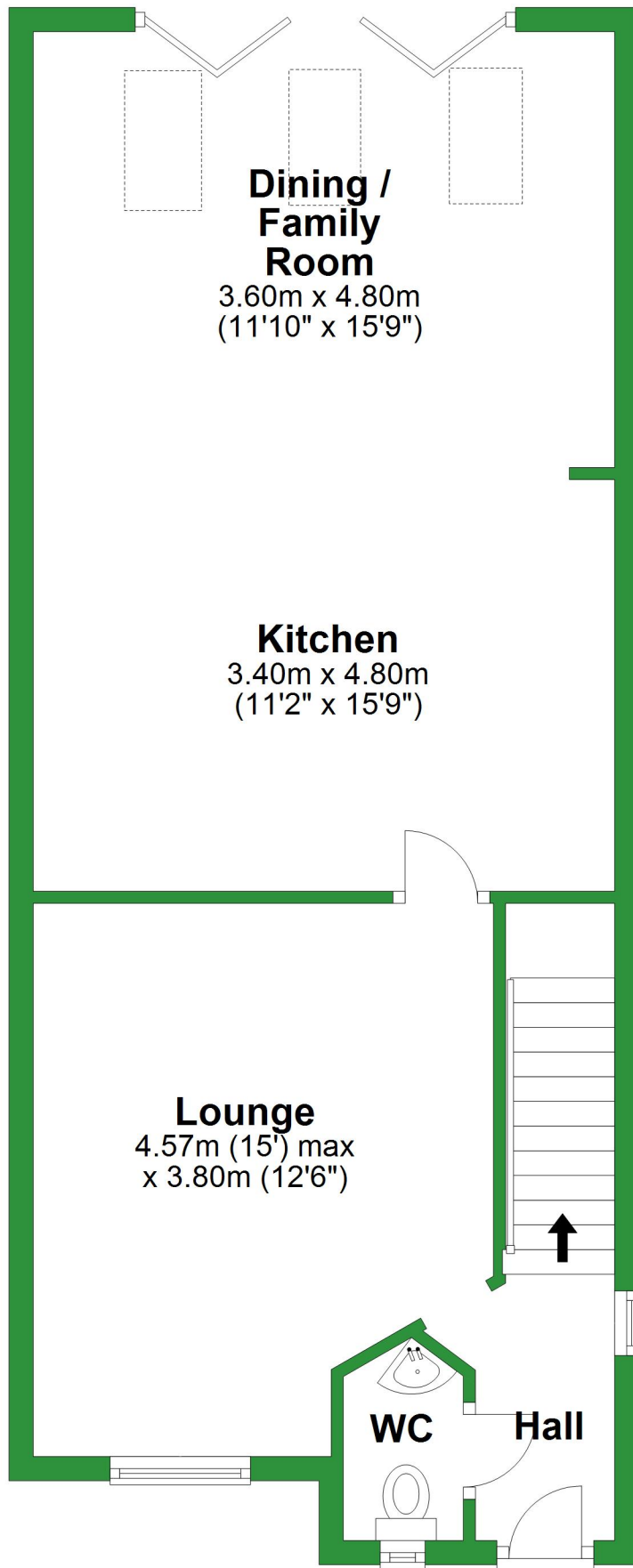


# Ground Floor

Approx. 58.0 sq. metres (624.8 sq. feet)

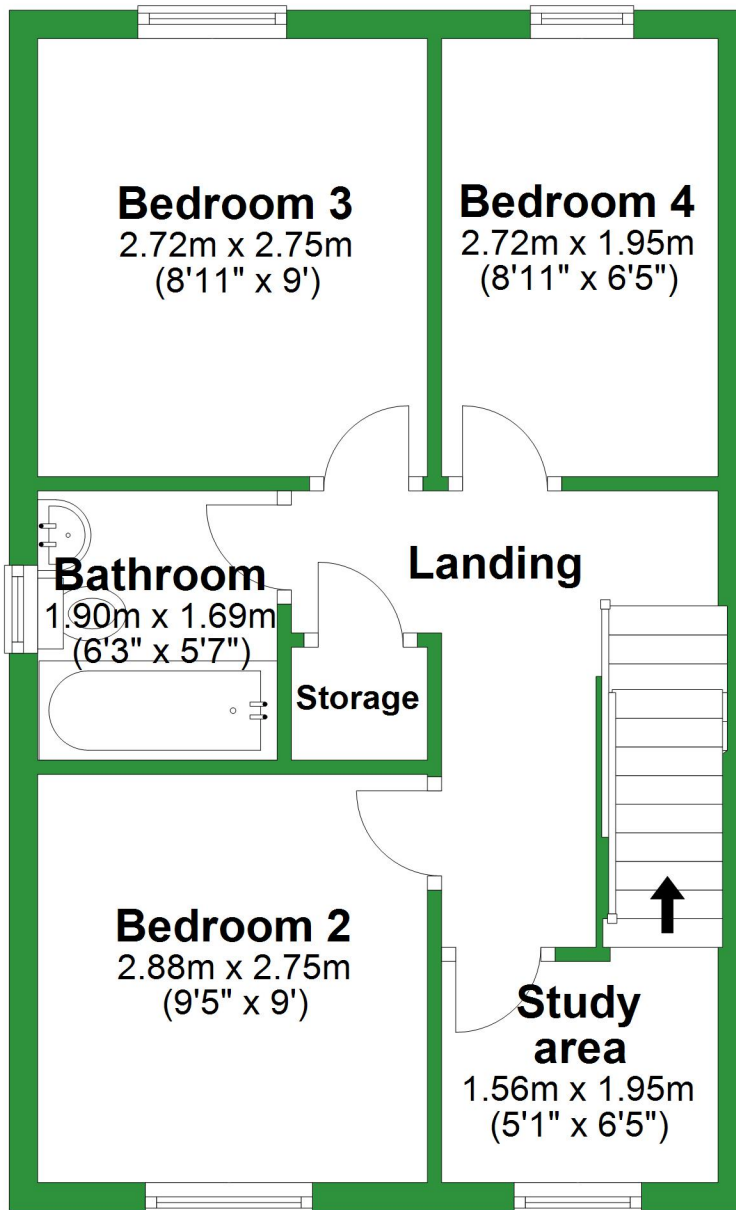


Total area: approx. 122.4 sq. metres (1317.6 sq. feet)

For illustrative purposes only. Not to scale. All sizes are approximate.  
Plan produced using PlanUp.

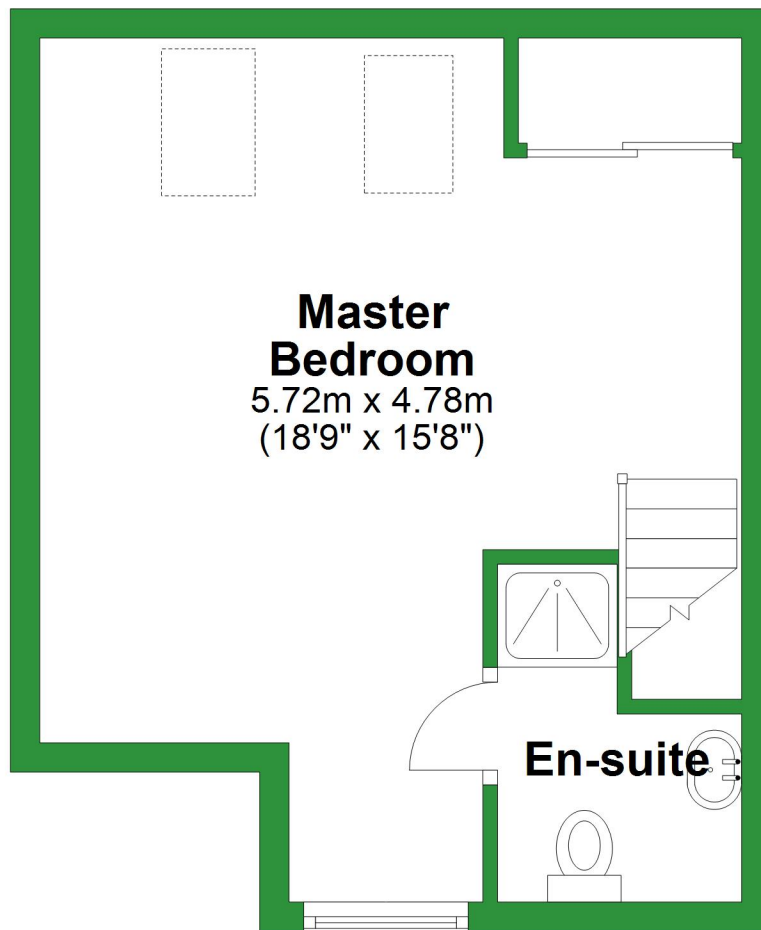
# First Floor

Approx. 38.7 sq. metres (416.9 sq. feet)



## Second Floor

Approx. 25.6 sq. metres (275.8 sq. feet)



# Ground Floor

Approx. 58.0 sq. metres (624.8 sq. feet)

## Dining / Family Room

3.60m x 4.80m  
(11'10" x 15'9")

## Kitchen

3.40m x 4.80m  
(11'2" x 15'9")

## Lounge

4.57m (15') max  
x 3.80m (12'6")

WC

Hall

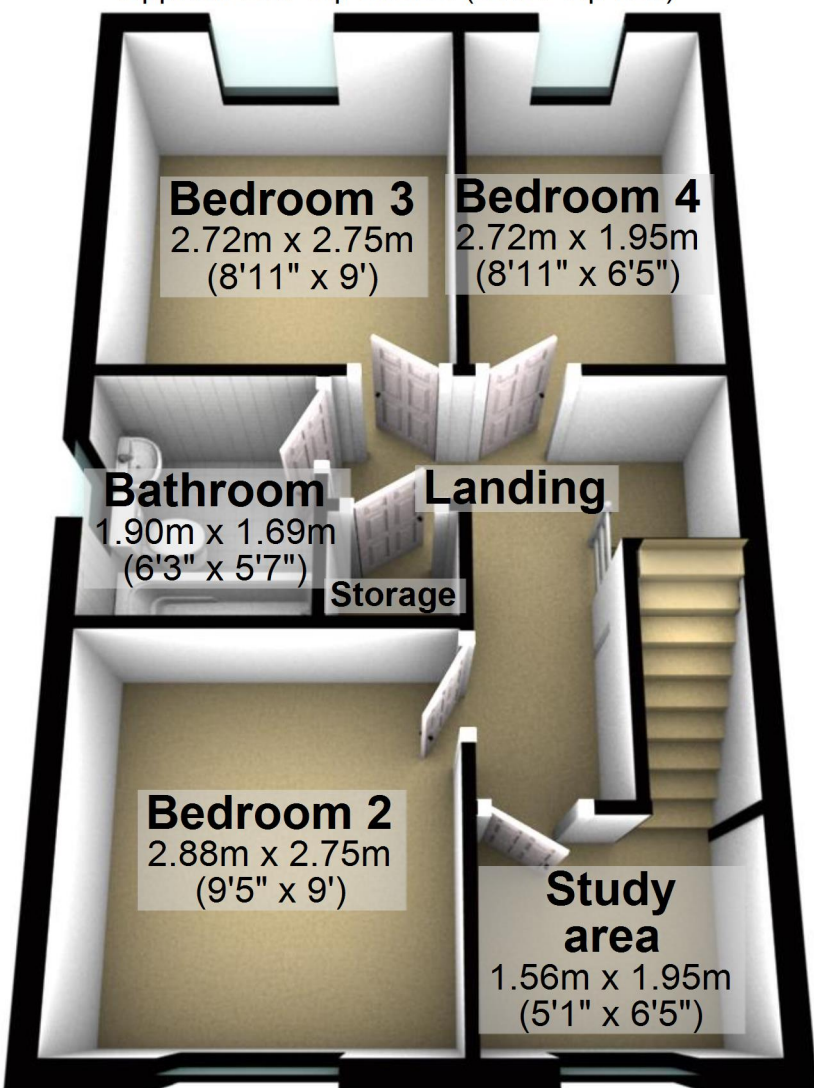
Total area: approx. 122.4 sq. metres (1317.6 sq. feet)

For illustrative purposes only. Not to scale. All sizes are approximate.

Plan produced using PlanUp.

# First Floor

Approx. 38.7 sq. metres (416.9 sq. feet)



## Second Floor

Approx. 25.6 sq. metres (275.8 sq. feet)

