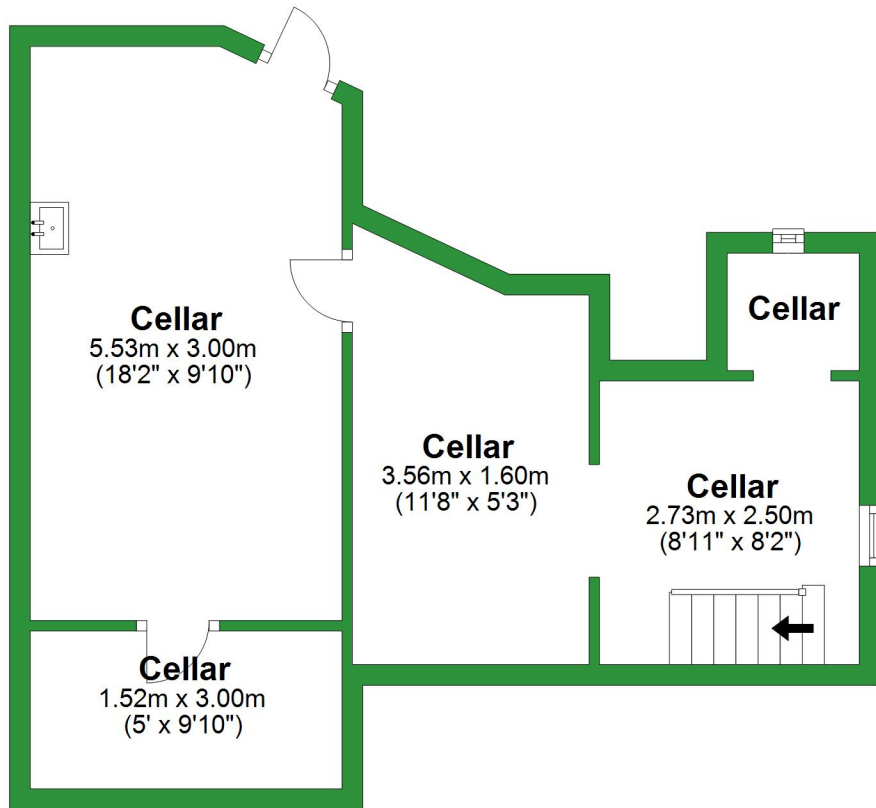


Basement

Approx. 38.8 sq. metres (417.7 sq. feet)

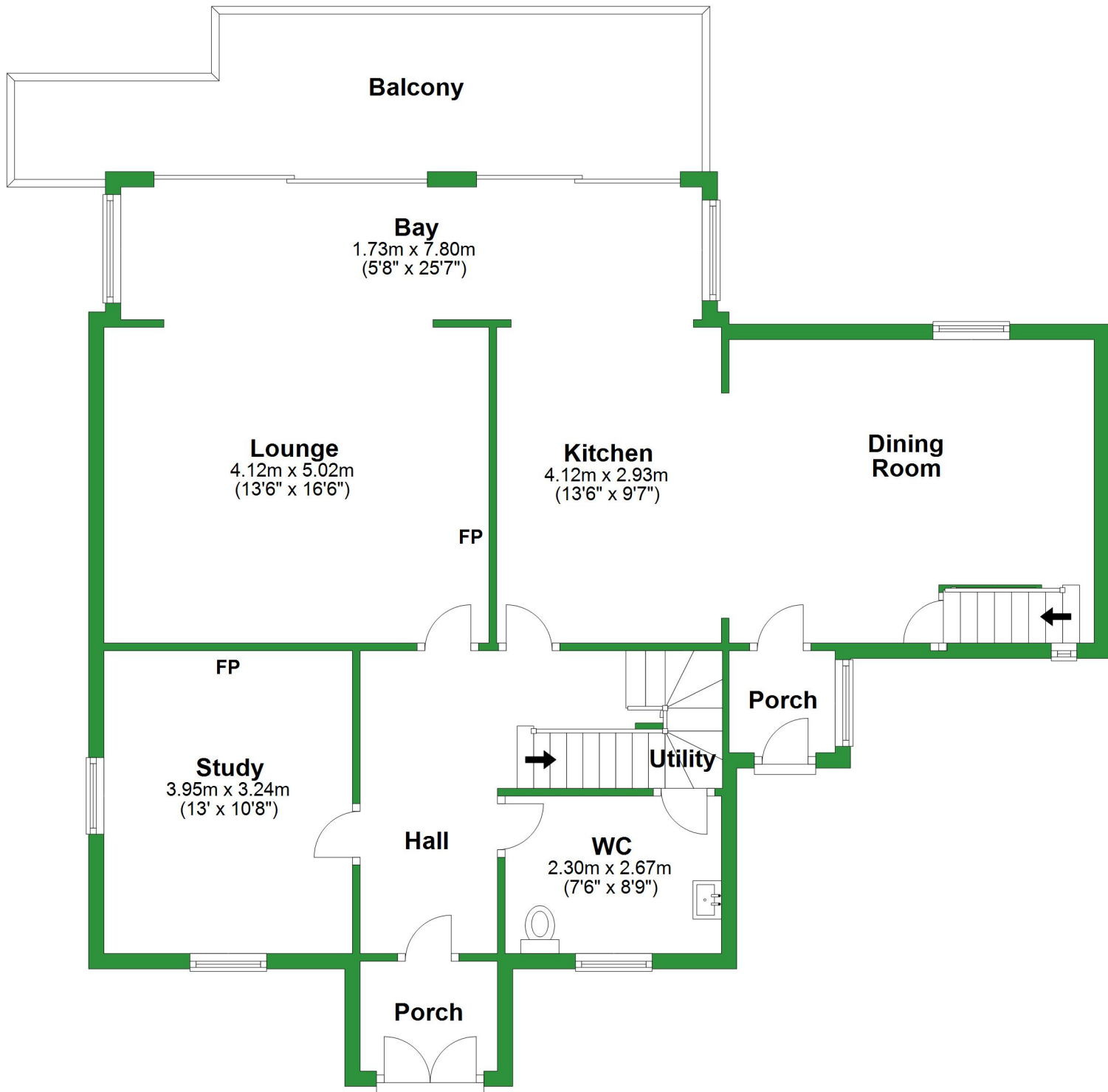


Total area: approx. 241.3 sq. metres (2597.6 sq. feet)

For illustrative purposes only. Not to scale. All sizes are approximate.
Plan produced using PlanUp.

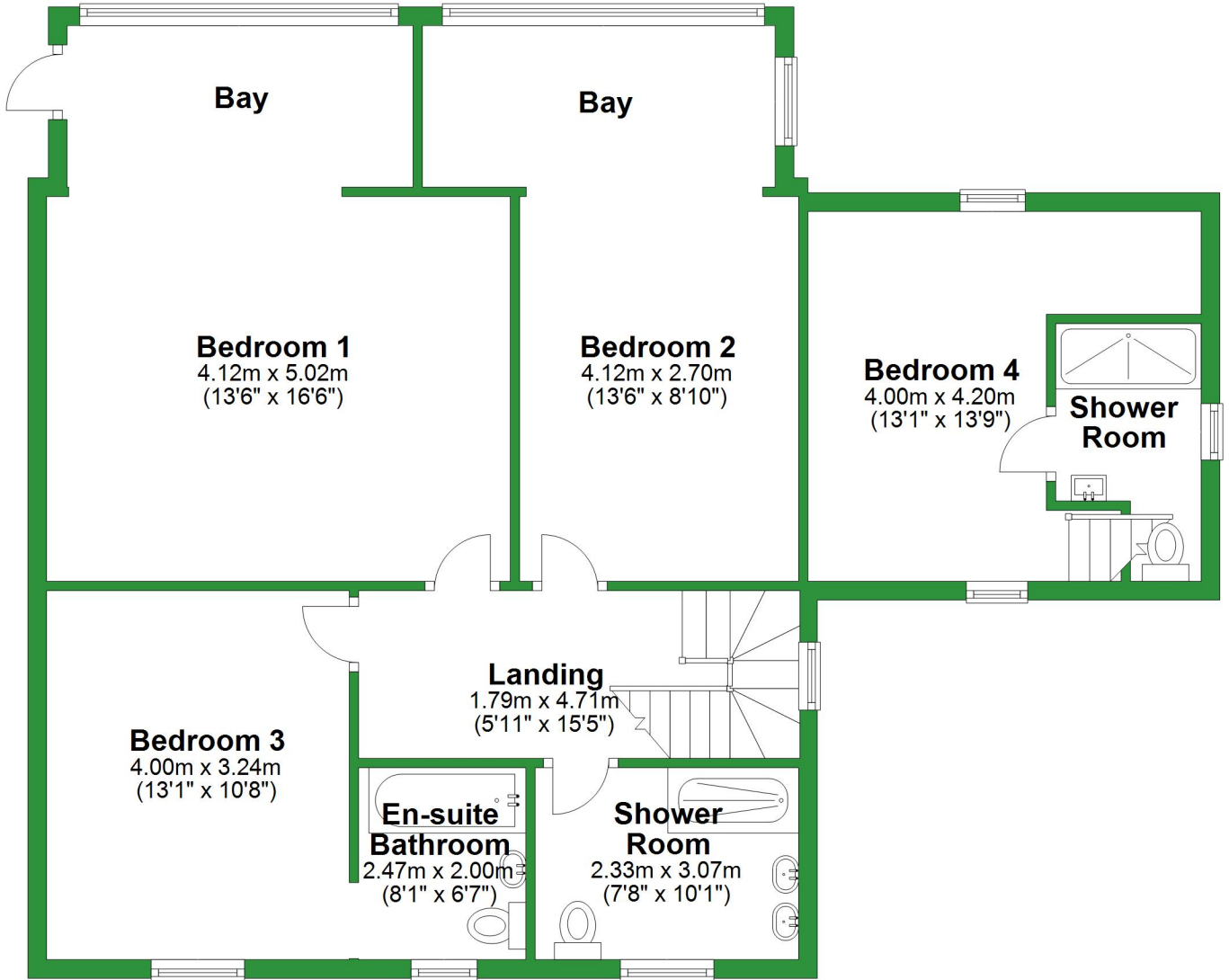
Ground Floor

Approx. 104.9 sq. metres (1129.2 sq. feet)



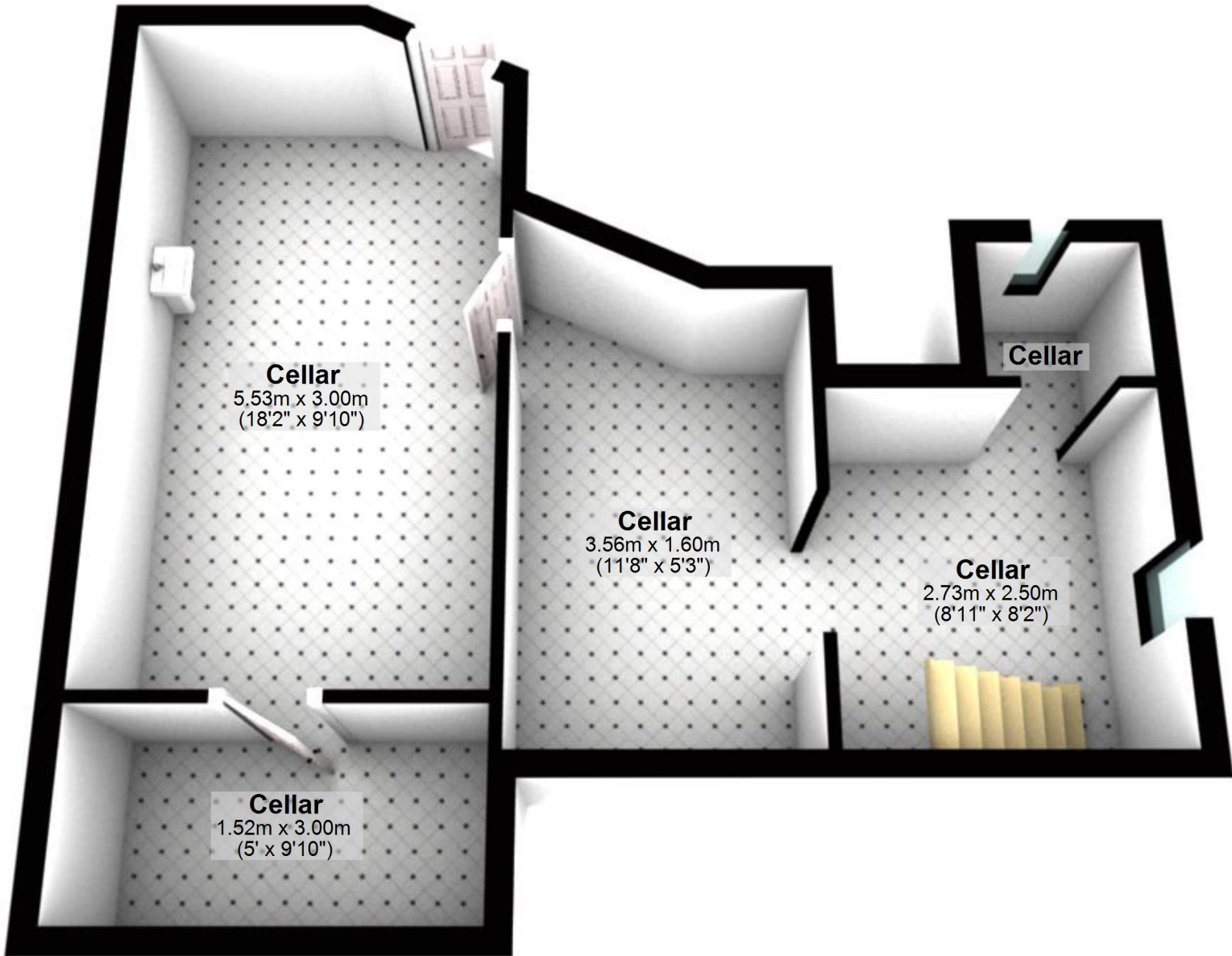
First Floor

Approx. 97.6 sq. metres (1050.7 sq. feet)



Basement

Approx. 38.8 sq. metres (417.7 sq. feet)



Total area: approx. 241.3 sq. metres (2597.6 sq. feet)

For illustrative purposes only. Not to scale. All sizes are approximate.
Plan produced using PlanUp.

Ground Floor

Approx. 104.9 sq. metres (1129.2 sq. feet)



Balcony

Bay

1.73m x 7.80m
(5'8" x 25'7")

Lounge

4.12m x 5.02m
(13'6" x 16'6")

Kitchen

4.12m x 2.93m
(13'6" x 9'7")

Dining Room

Study

3.95m x 3.24m
(13' x 10'8")

Hall

Utility

Porch

WC

2.30m x 2.67m
(7'6" x 8'9")

Porch

First Floor

Approx. 97.6 sq. metres (1050.7 sq. feet)

