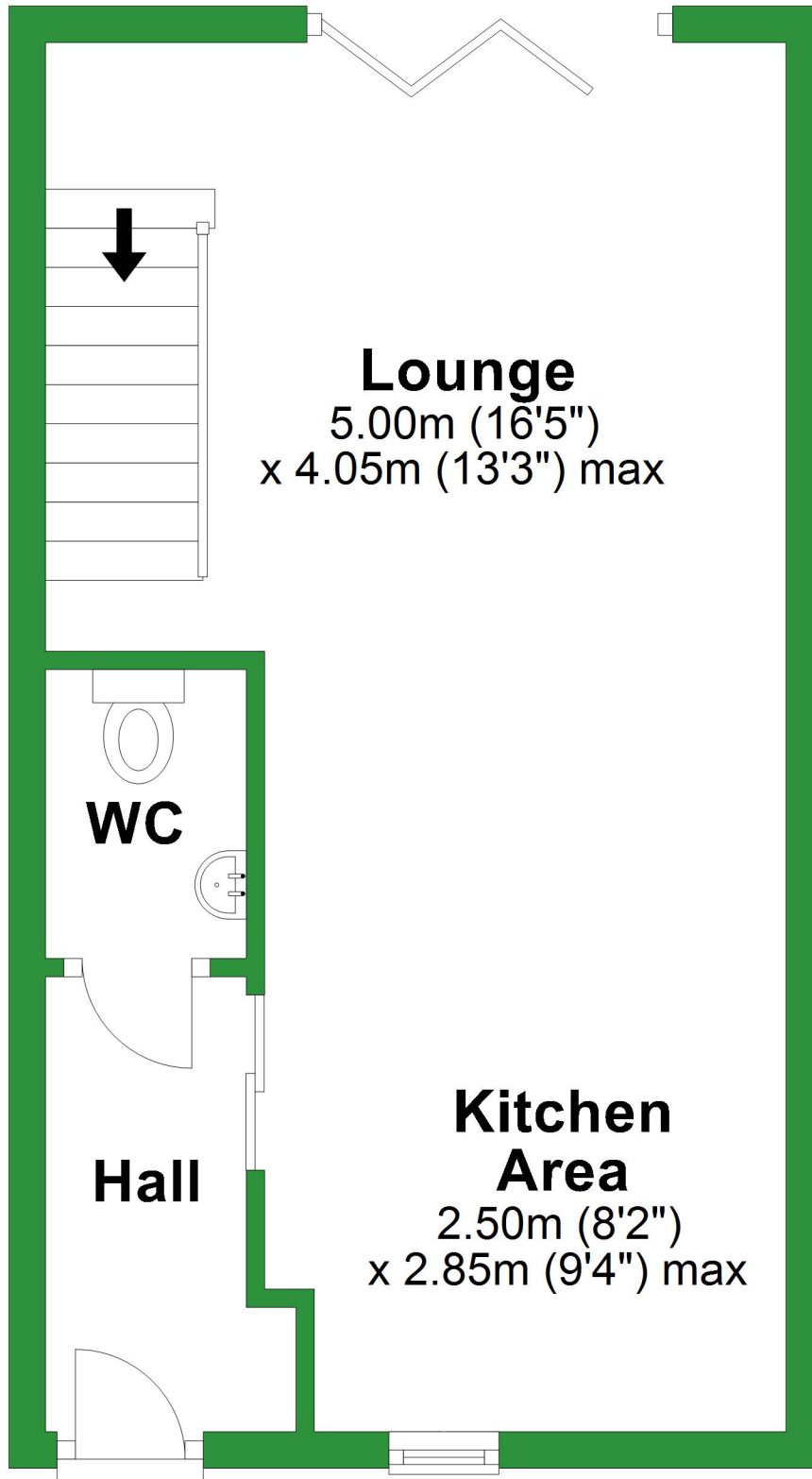


# Ground Floor

Approx. 30.8 sq. metres (331.1 sq. feet)



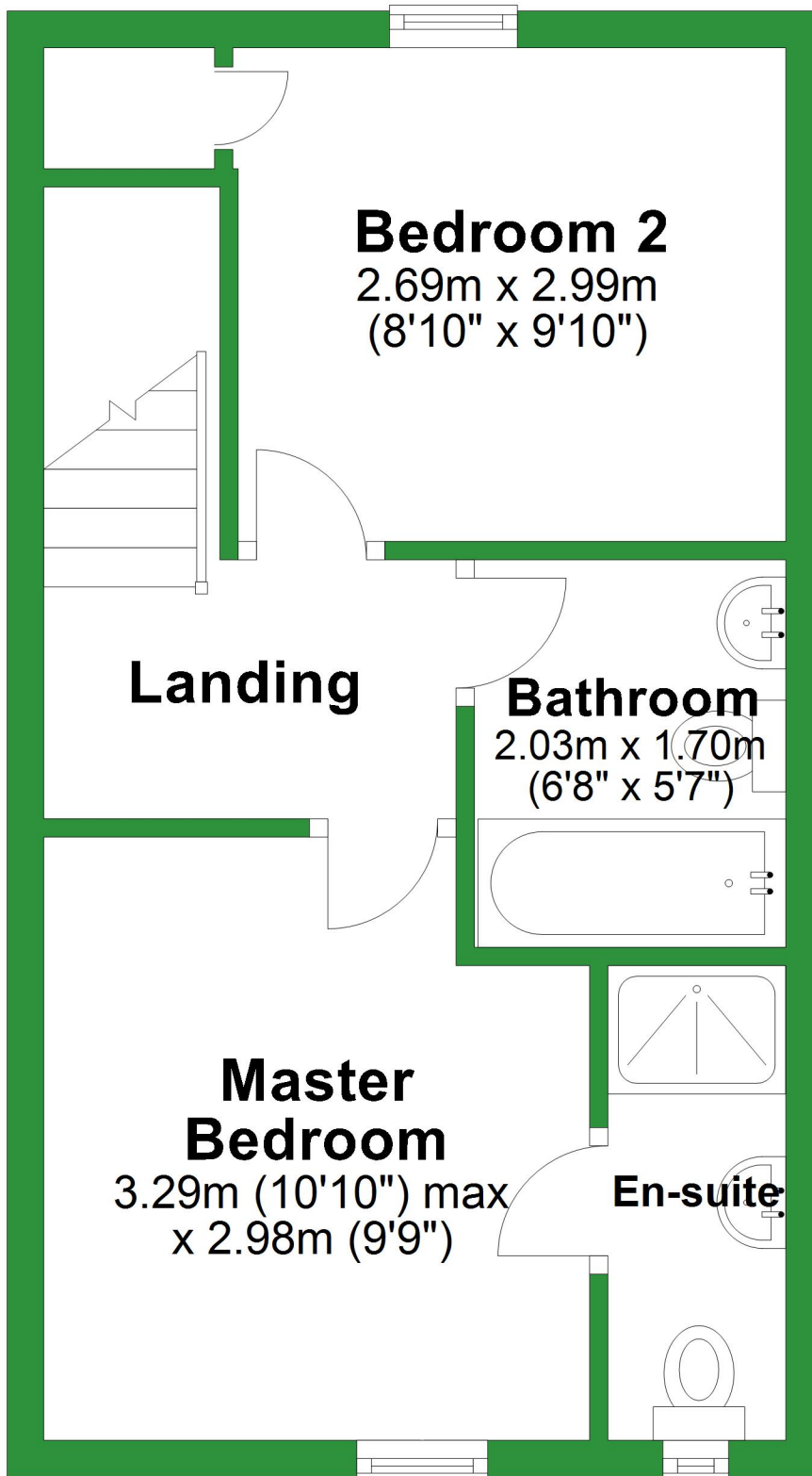
Total area: approx. 61.4 sq. metres (660.7 sq. feet)

For illustrative purposes only. Not to scale. All sizes are approximate.

Plan produced using PlanUp.

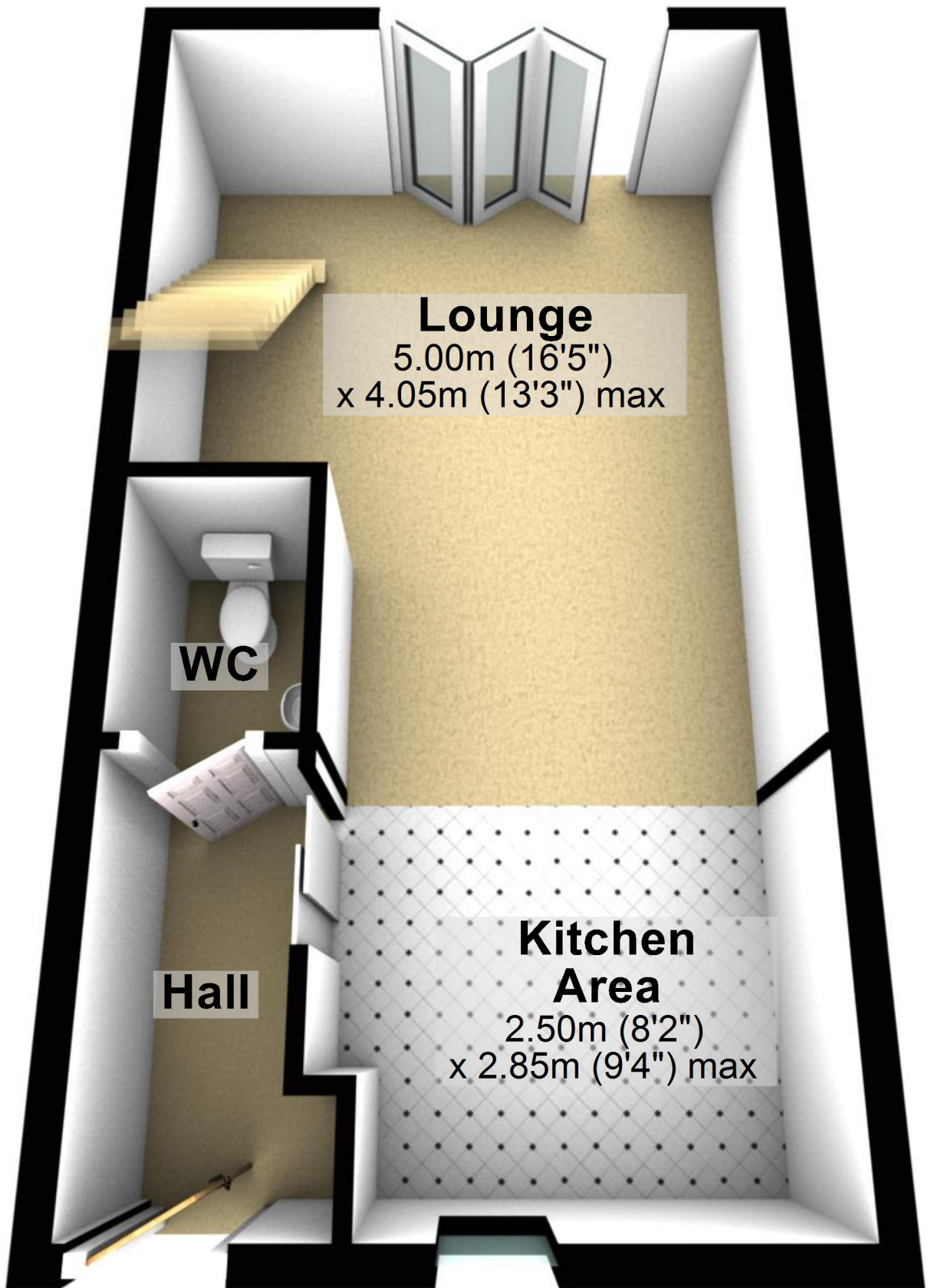
# First Floor

Approx. 30.6 sq. metres (329.6 sq. feet)



# Ground Floor

Approx. 30.8 sq. metres (331.1 sq. feet)



Total area: approx. 61.4 sq. metres (660.7 sq. feet)

For illustrative purposes only. Not to scale. All sizes are approximate.

Plan produced using PlanUp.

# First Floor

Approx. 30.6 sq. metres (329.6 sq. feet)

