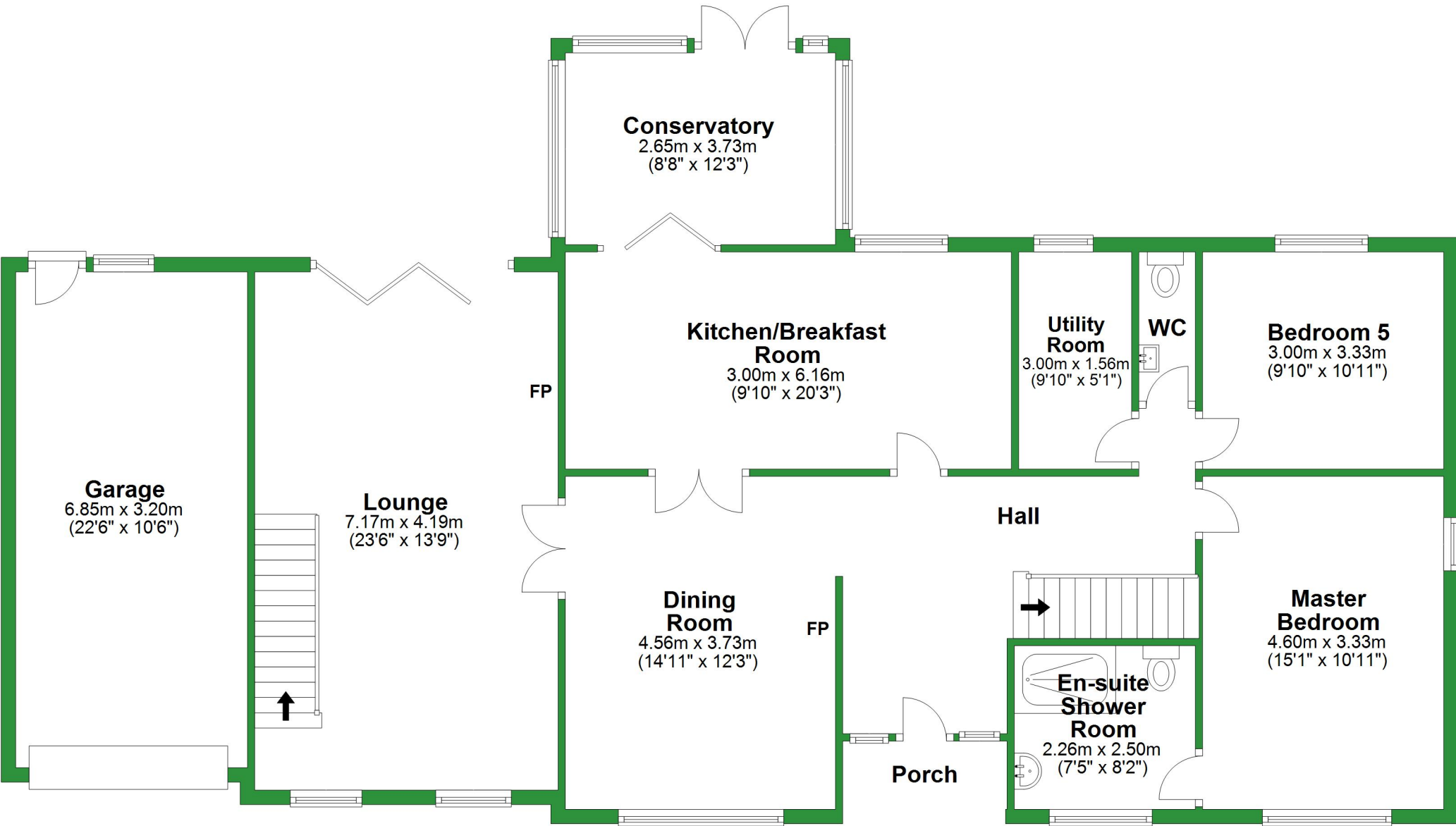


# Ground Floor

Approx. 157.0 sq. metres (1690.2 sq. feet)

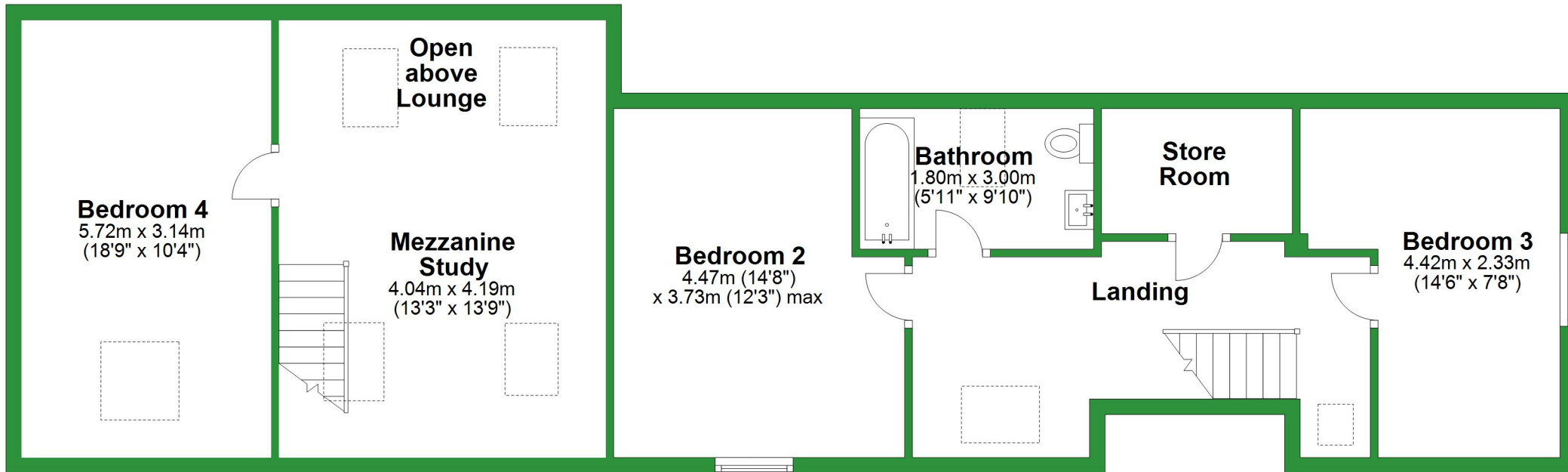


Total area: approx. 253.1 sq. metres (2724.8 sq. feet)

For illustrative purposes only. Not to scale. All sizes are approximate.  
Plan produced using PlanUp.

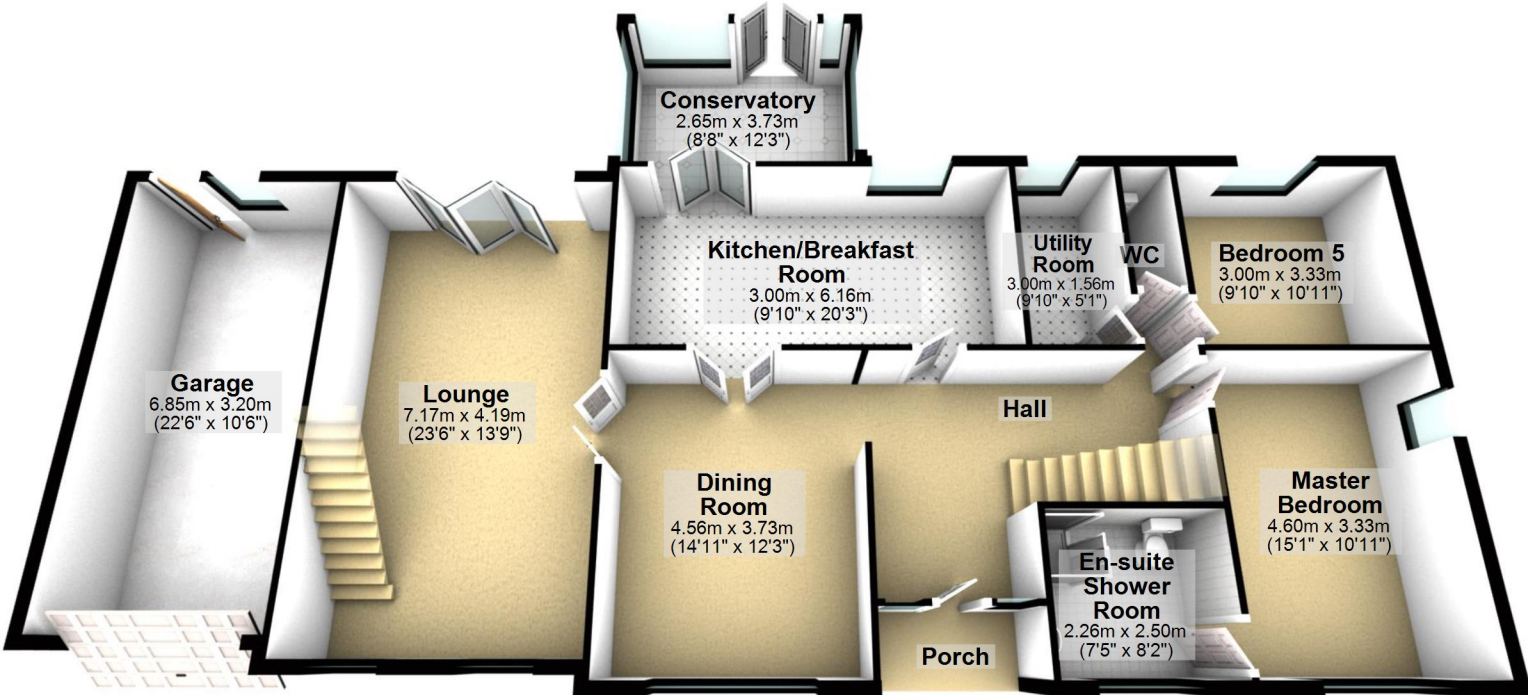
## First Floor

Approx. 96.1 sq. metres (1034.6 sq. feet)



## Ground Floor

Approx. 157.0 sq. metres (1690.2 sq. feet)



Total area: approx. 253.1 sq. metres (2724.8 sq. feet)

For illustrative purposes only. Not to scale. All sizes are approximate.  
Plan produced using PlanUp.

## First Floor

Approx. 96.1 sq. metres (1034.6 sq. feet)

