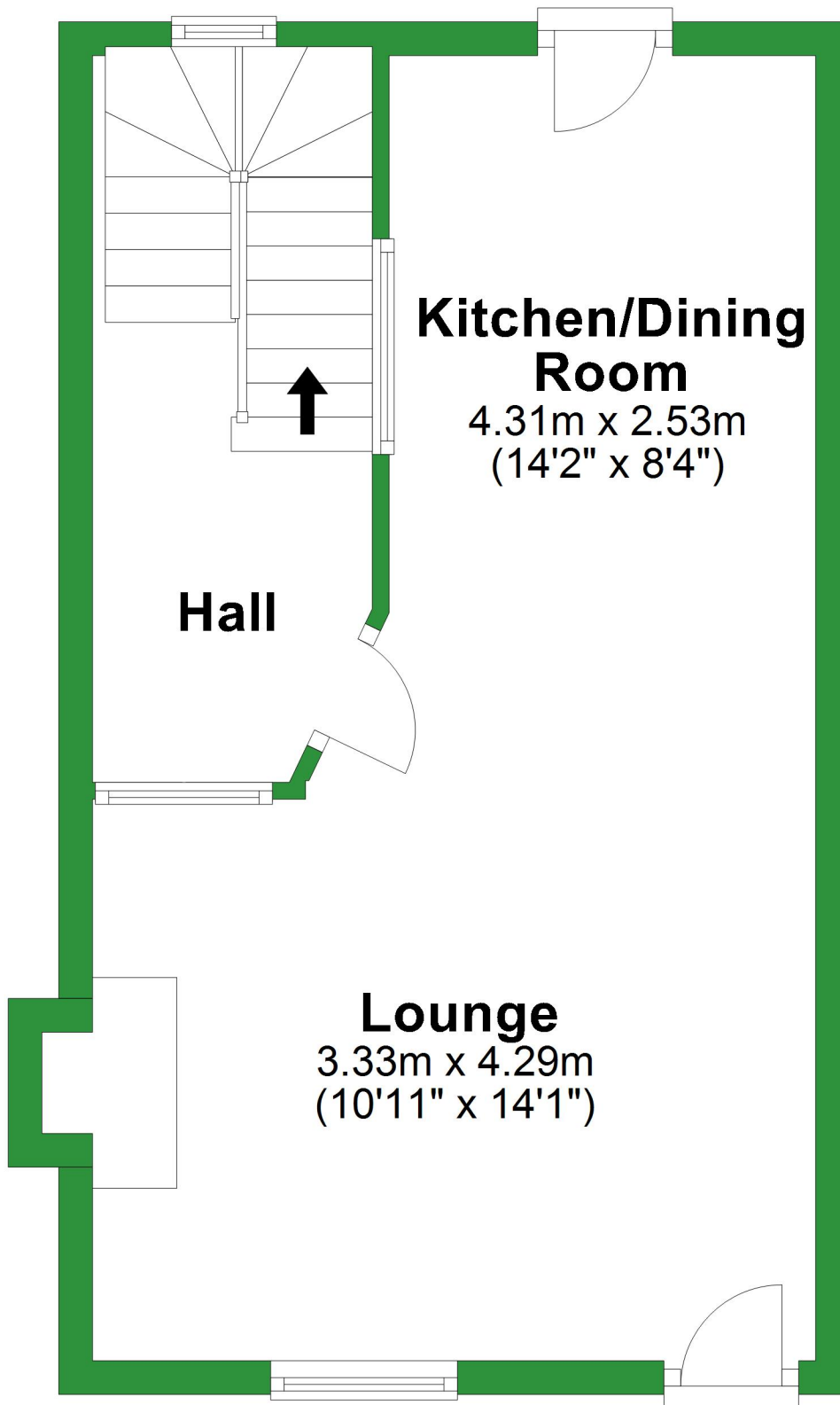


# Ground Floor

Approx. 33.2 sq. metres (357.4 sq. feet)



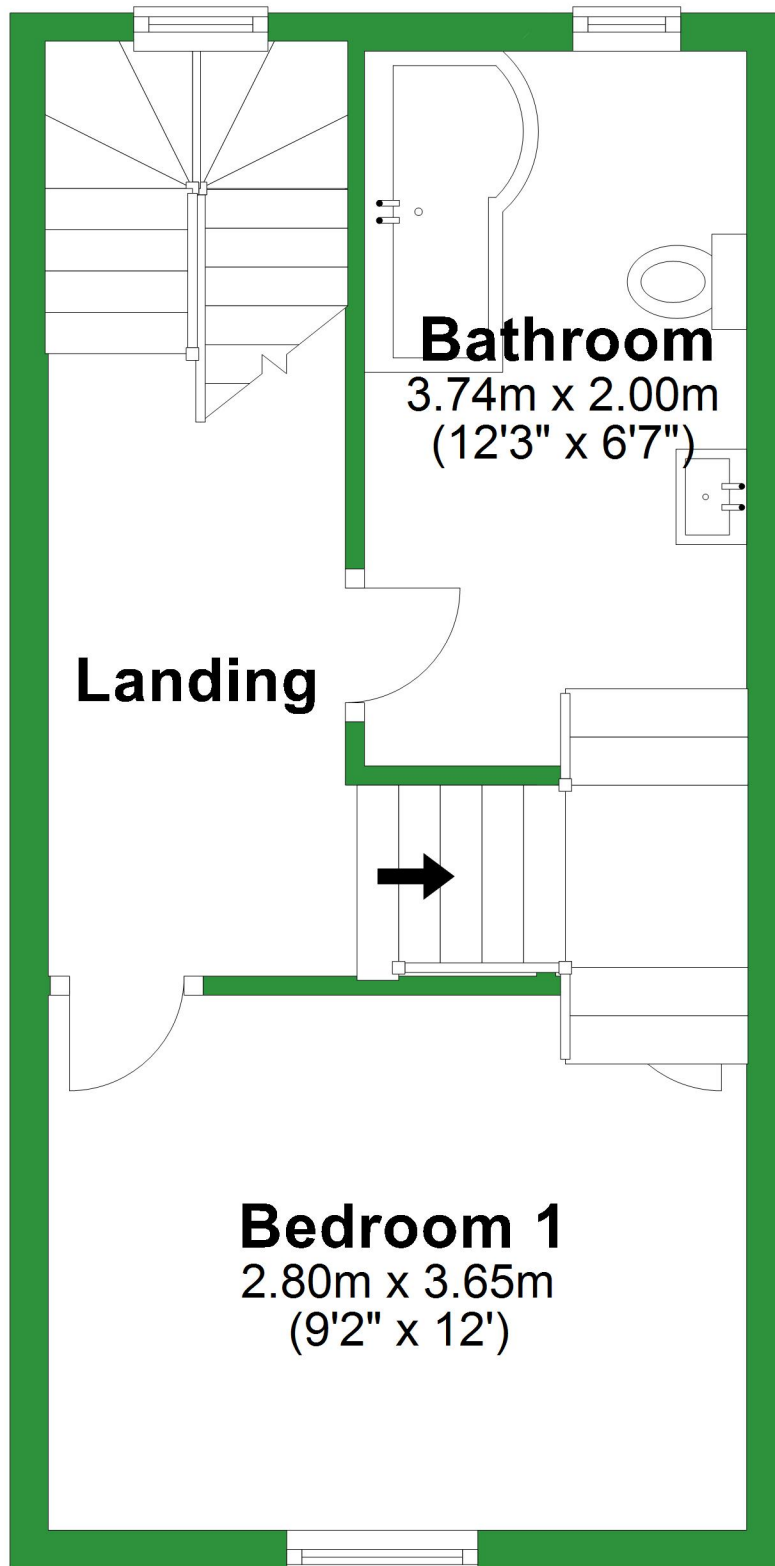
Total area: approx. 86.5 sq. metres (930.9 sq. feet)

For illustrative purposes only. Not to scale. All sizes are approximate.

Plan produced using PlanUp.

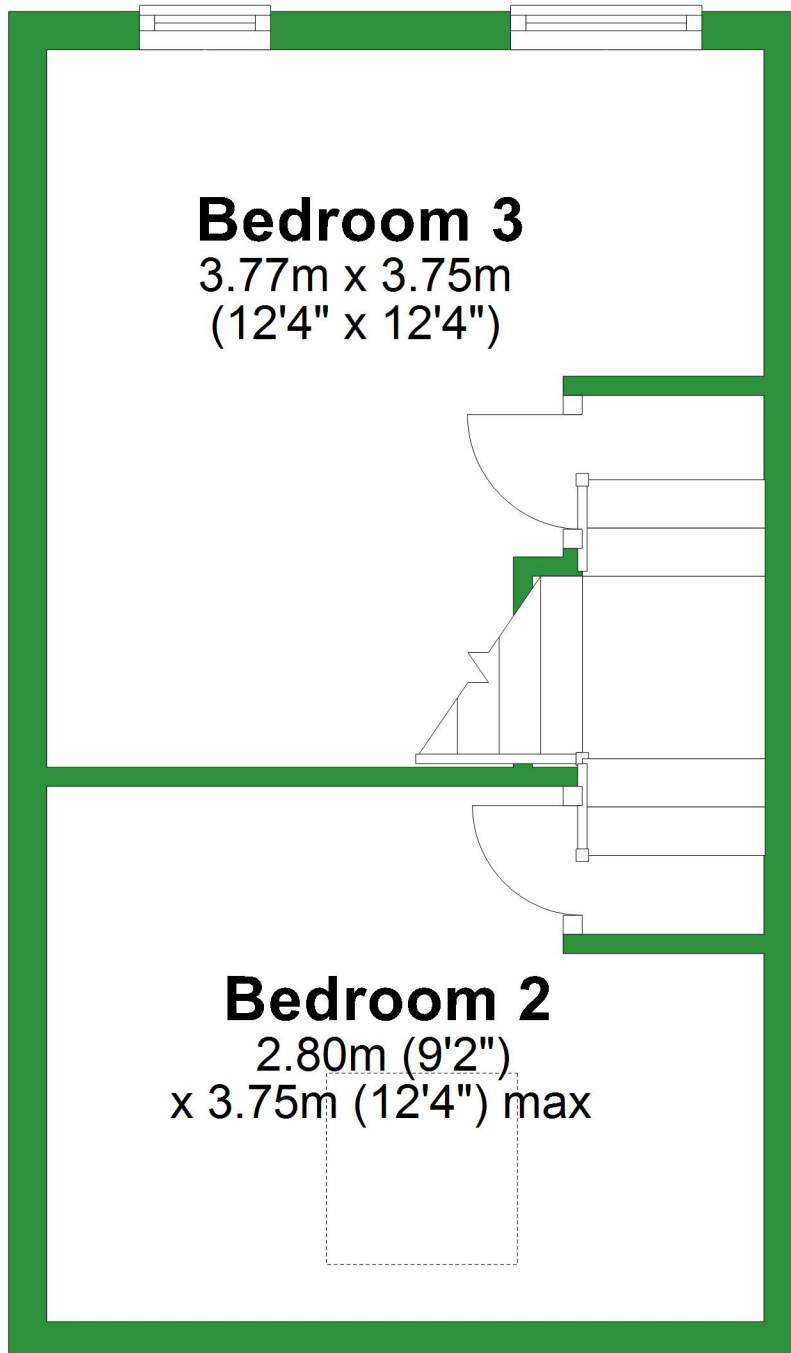
# First Floor

Approx. 28.3 sq. metres (304.5 sq. feet)



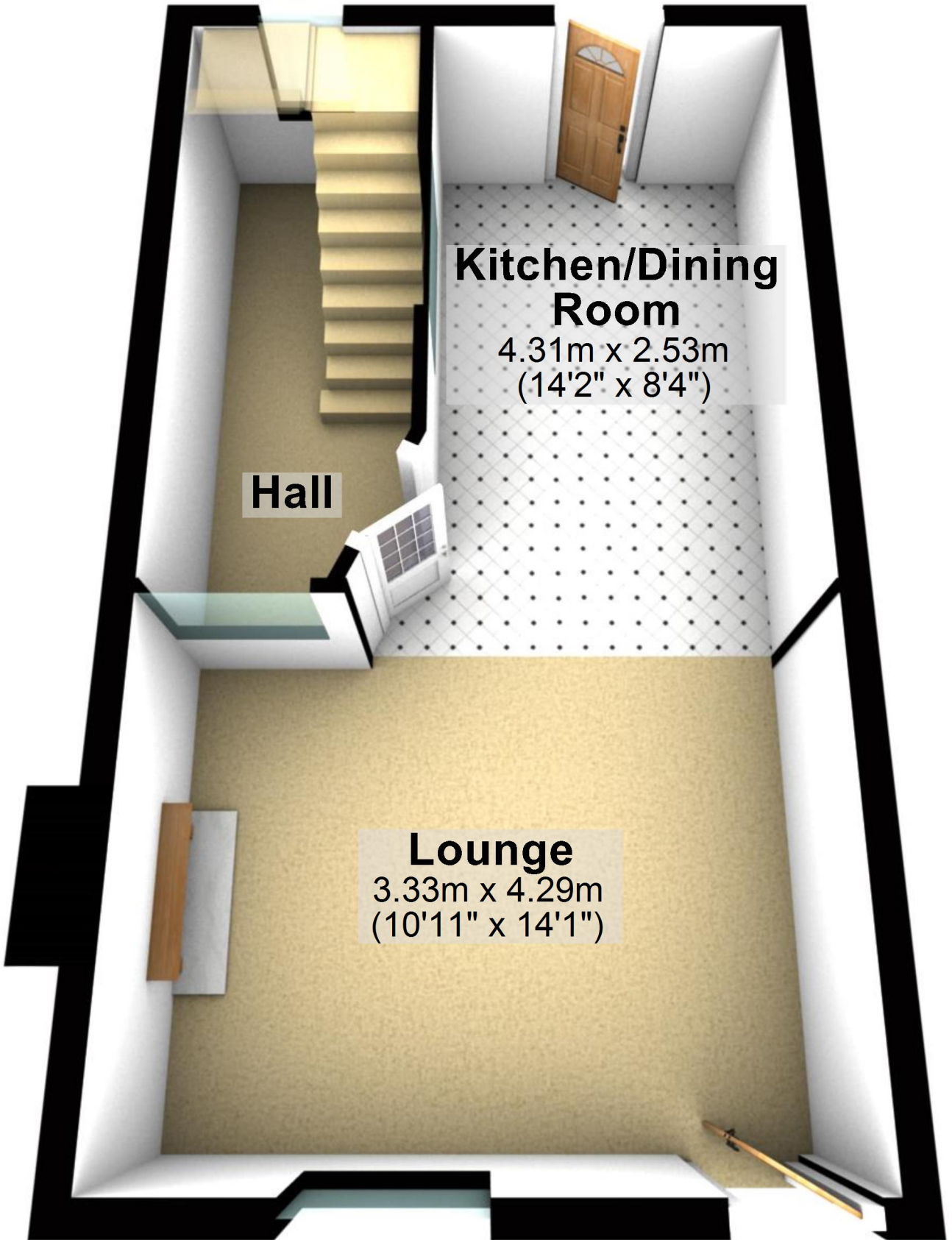
# Second Floor

Approx. 25.0 sq. metres (269.0 sq. feet)



# Ground Floor

Approx. 33.2 sq. metres (357.4 sq. feet)



## Kitchen/Dining Room

4.31m x 2.53m  
(14'2" x 8'4")

Hall

## Lounge

3.33m x 4.29m  
(10'11" x 14'1")

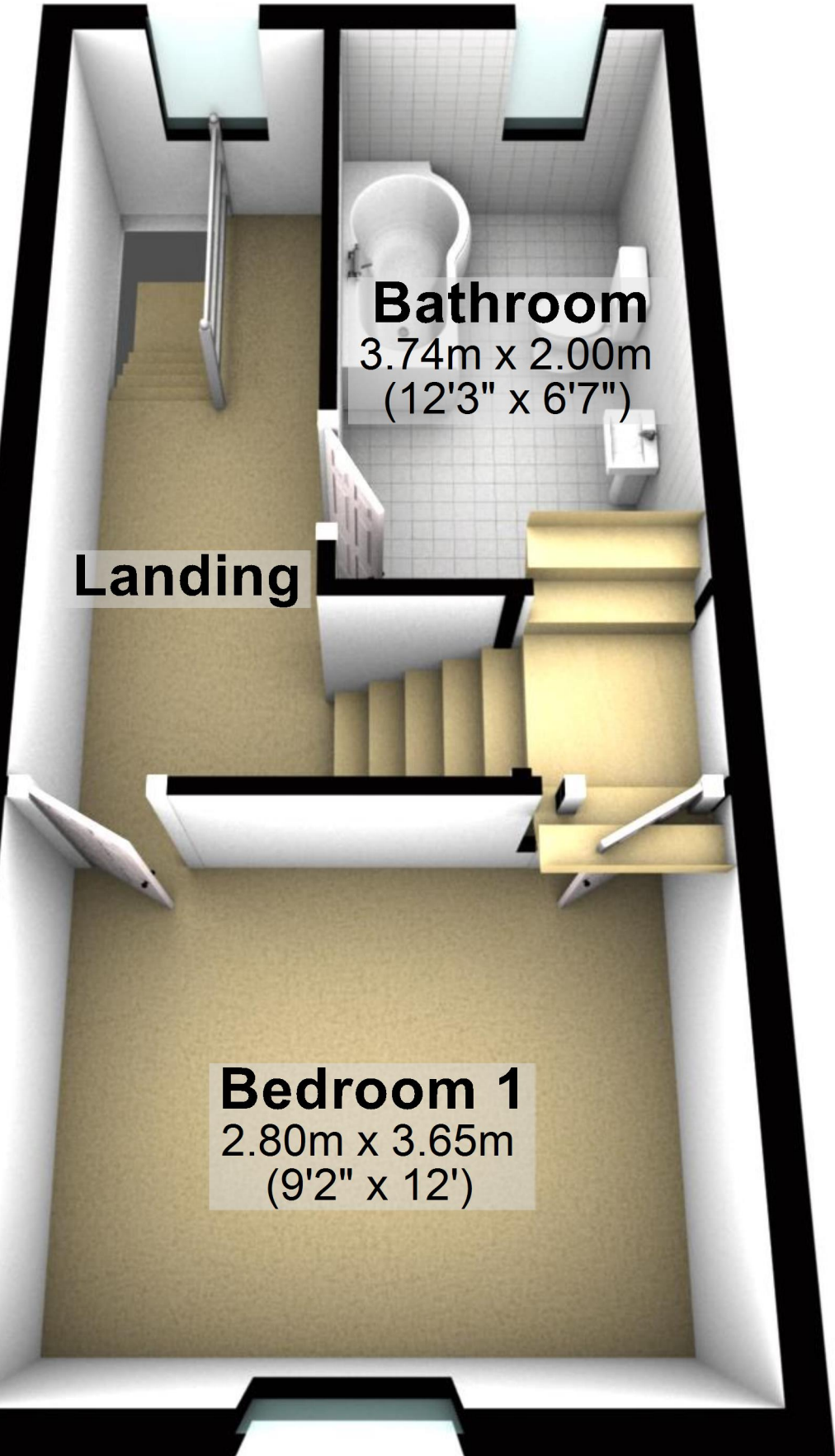
Total area: approx. 86.5 sq. metres (930.9 sq. feet)

For illustrative purposes only. Not to scale. All sizes are approximate.

Plan produced using PlanUp.

# First Floor

Approx. 28.3 sq. metres (304.5 sq. feet)



## Bathroom

3.74m x 2.00m  
(12'3" x 6'7")

## Landing

## Bedroom 1

2.80m x 3.65m  
(9'2" x 12')

# Second Floor

Approx. 25.0 sq. metres (269.0 sq. feet)

## Bedroom 3

3.77m x 3.75m  
(12'4" x 12'4")

## Bedroom 2

2.80m (9'2")  
x 3.75m (12'4") max

