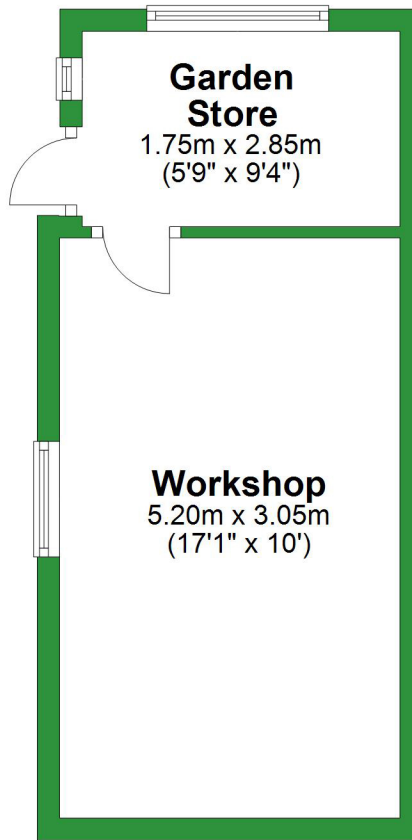


Approx. 21.1 sq. metres (227.4 sq. feet)

## Basement

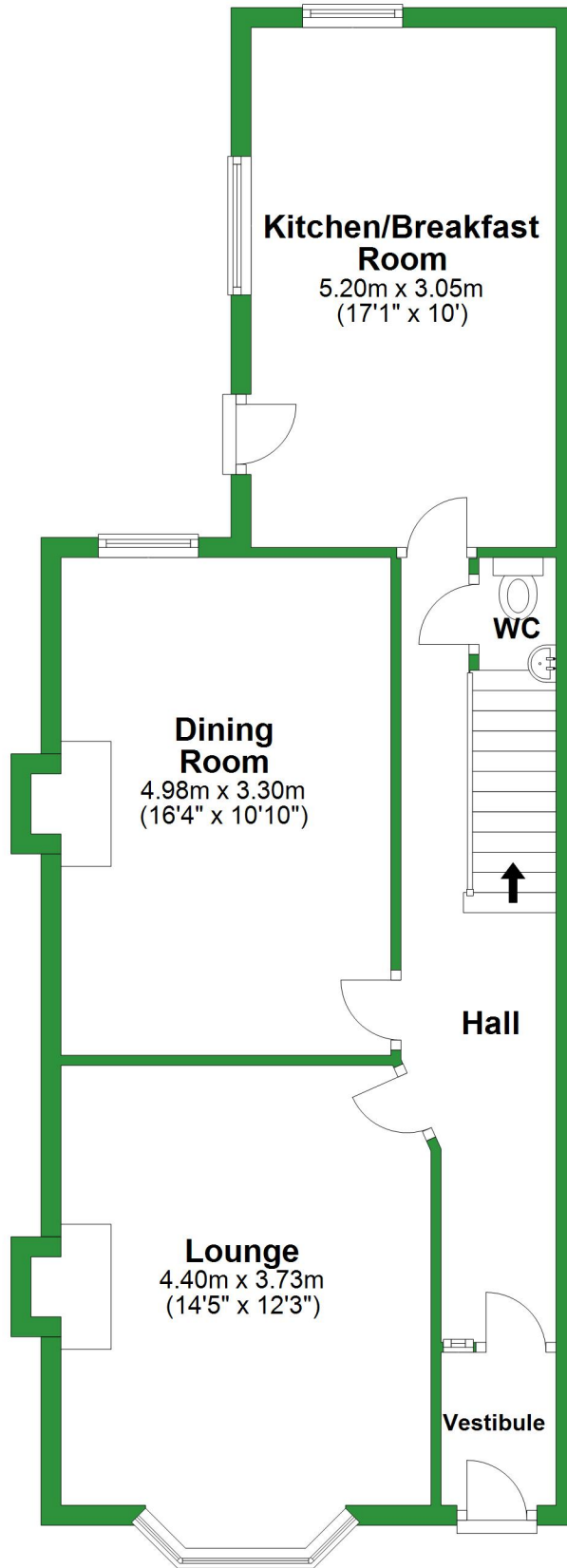


**Total area: approx. 178.3 sq. metres (1919.5 sq. feet)**

For illustrative purposes only. Not to scale. All sizes are approximate.  
Plan produced using PlanUp.

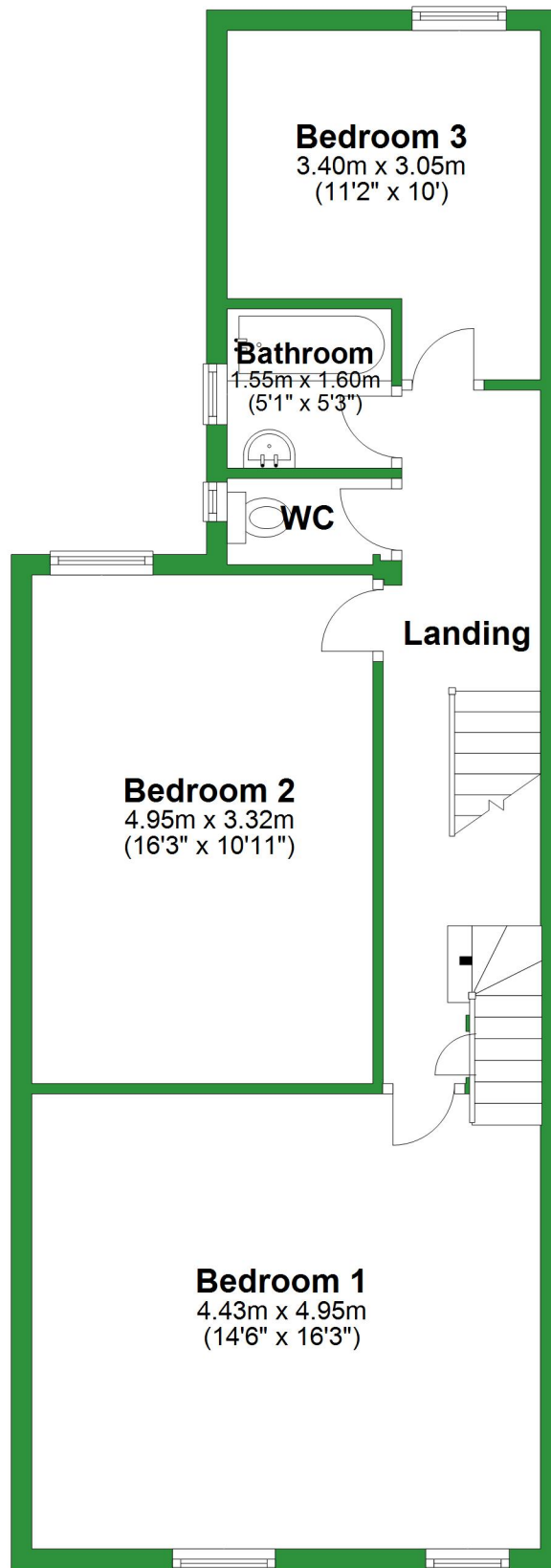
# Ground Floor

Approx. 63.4 sq. metres (682.0 sq. feet)



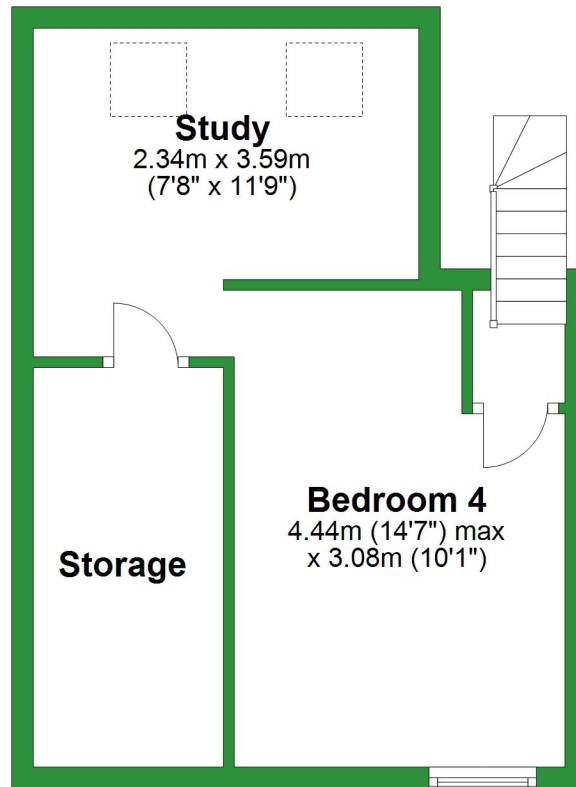
# First Floor

Approx. 63.1 sq. metres (679.2 sq. feet)




## Second Floor

Approx. 30.7 sq. metres (330.9 sq. feet)



## Basement

Approx. 21.1 sq. metres (227.4 sq. feet)



**Garden Store**  
1.75m x 2.85m  
(5'9" x 9'4")

**Workshop**  
5.20m x 3.05m  
(17'1" x 10')

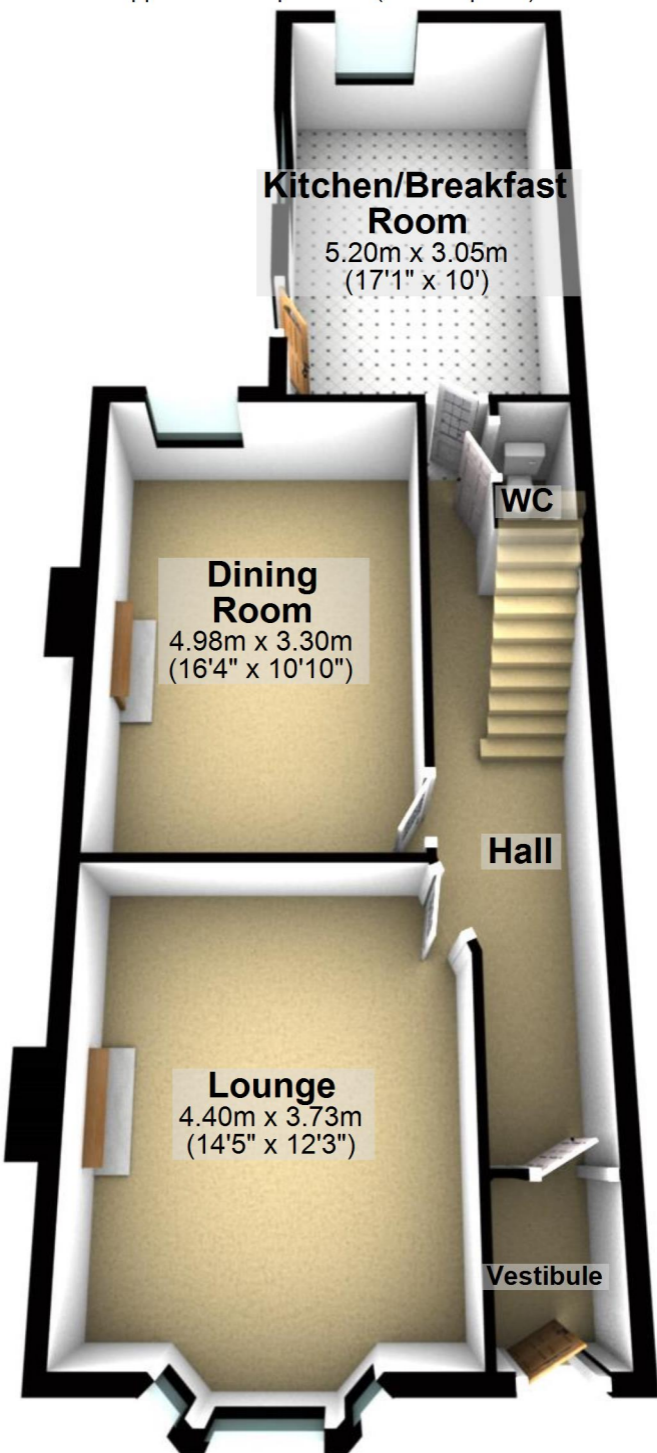
Total area: approx. 178.3 sq. metres (1919.5 sq. feet)

For illustrative purposes only. Not to scale. All sizes are approximate.

Plan produced using PlanUp.

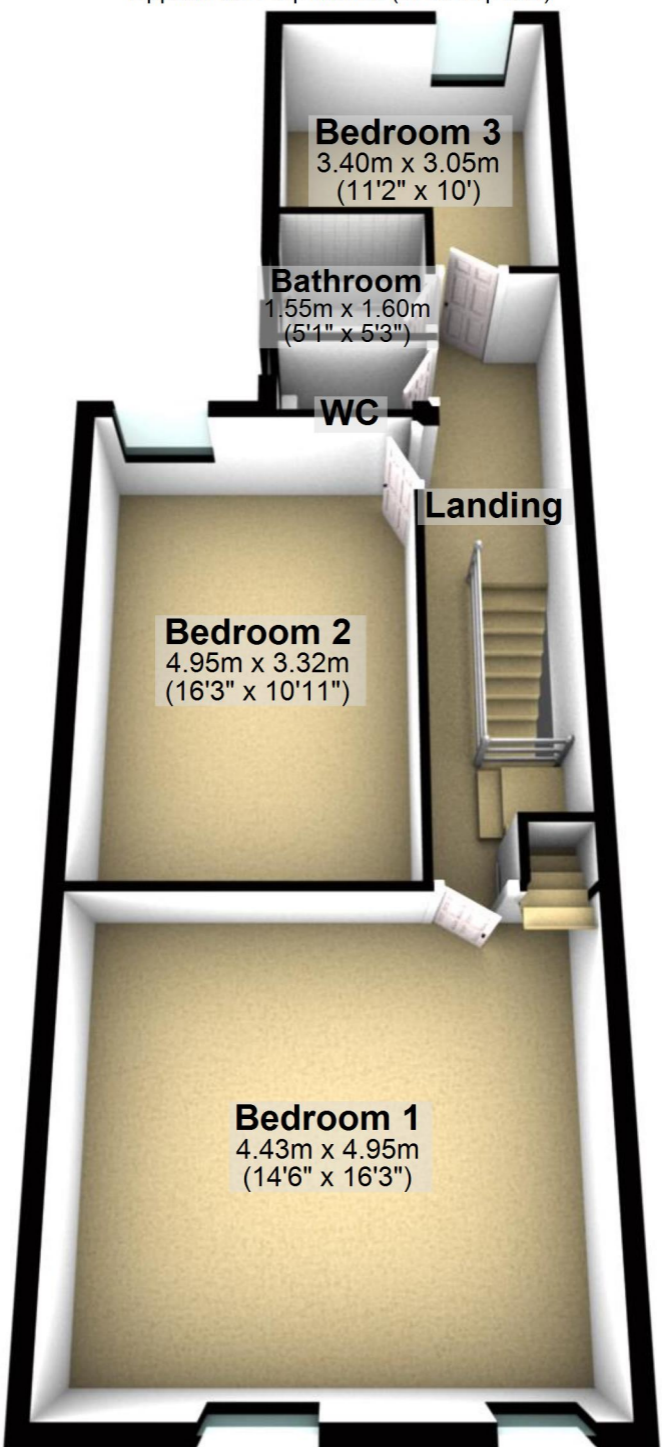
## Ground Floor

Approx. 63.4 sq. metres (682.0 sq. feet)



## First Floor

Approx. 63.1 sq. metres (679.2 sq. feet)



## Second Floor

Approx. 30.7 sq. metres (330.9 sq. feet)

