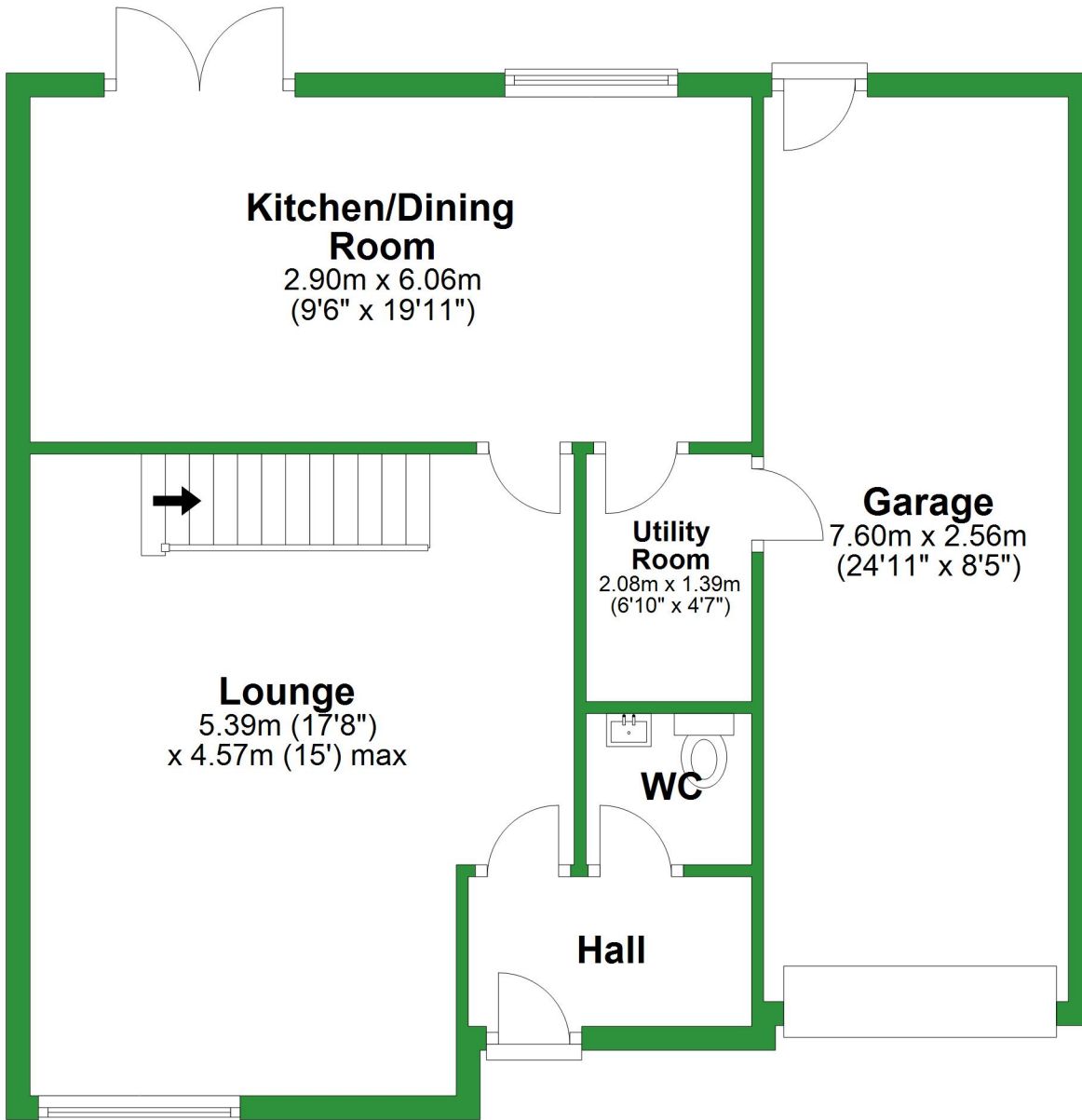
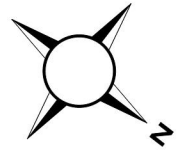


# Ground Floor

Approx. 69.6 sq. metres (749.3 sq. feet)



**Kitchen/Dining Room**

2.90m x 6.06m  
(9'6" x 19'11")



**Lounge**  
5.39m (17'8")  
x 4.57m (15') max

**Utility Room**  
2.08m x 1.39m  
(6'10" x 4'7")

**WC**

**Garage**

7.60m x 2.56m  
(24'11" x 8'5")

**Hall**

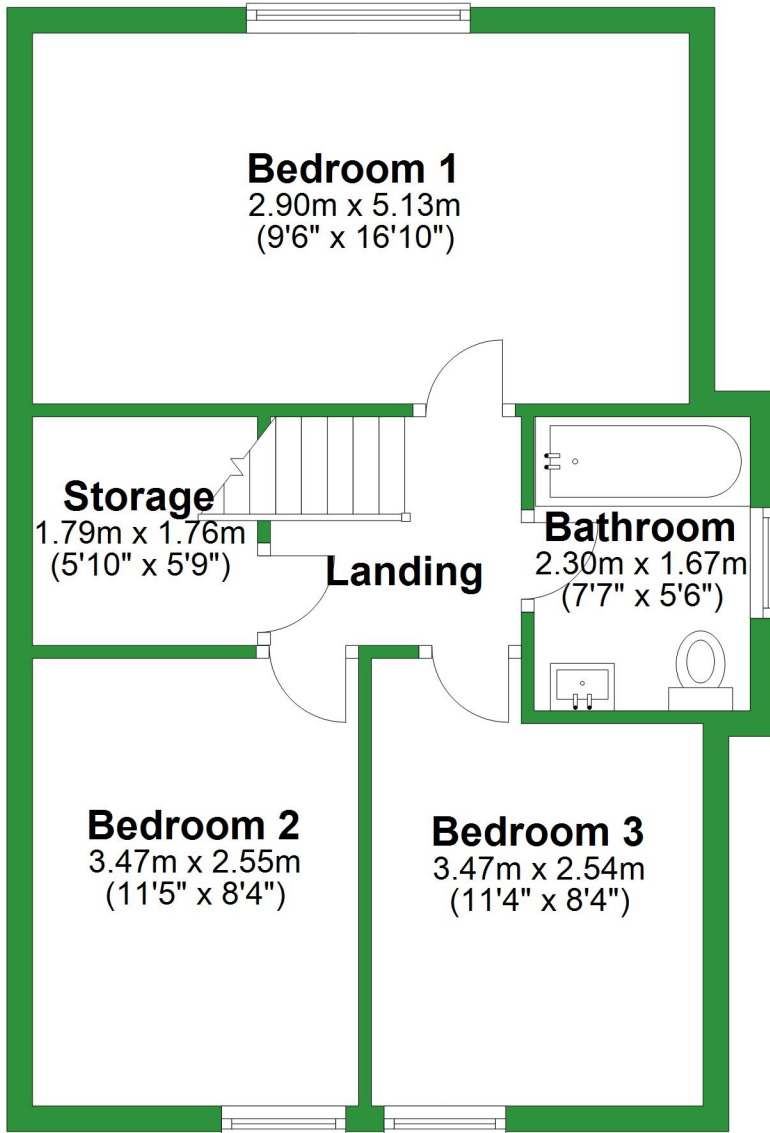
Total area: approx. 114.0 sq. metres (1227.0 sq. feet)

For illustrative purposes only. Not to scale. All sizes are approximate.

Plan produced using PlanUp.

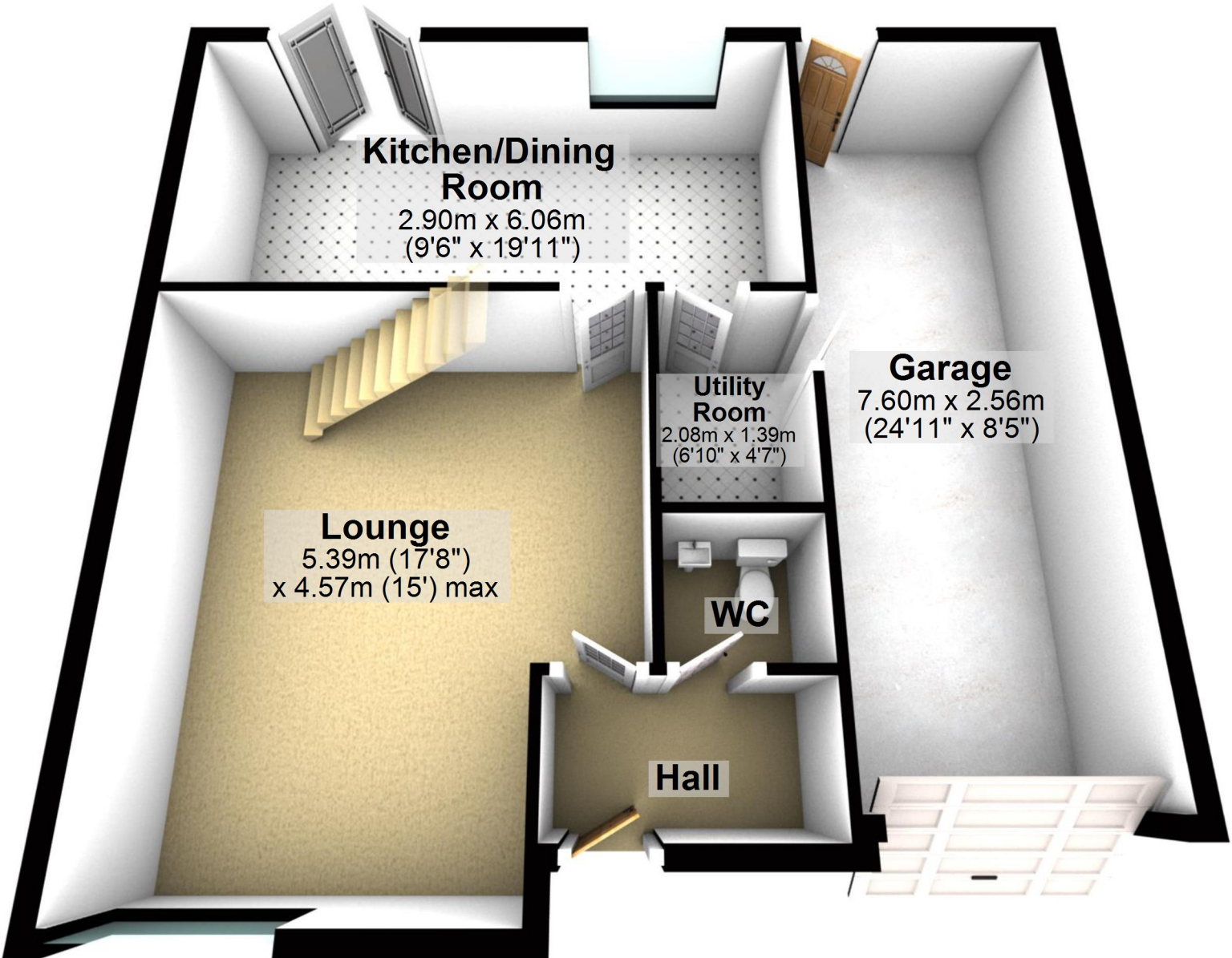
# First Floor

Approx. 44.4 sq. metres (477.7 sq. feet)



# Ground Floor

Approx. 69.6 sq. metres (749.3 sq. feet)

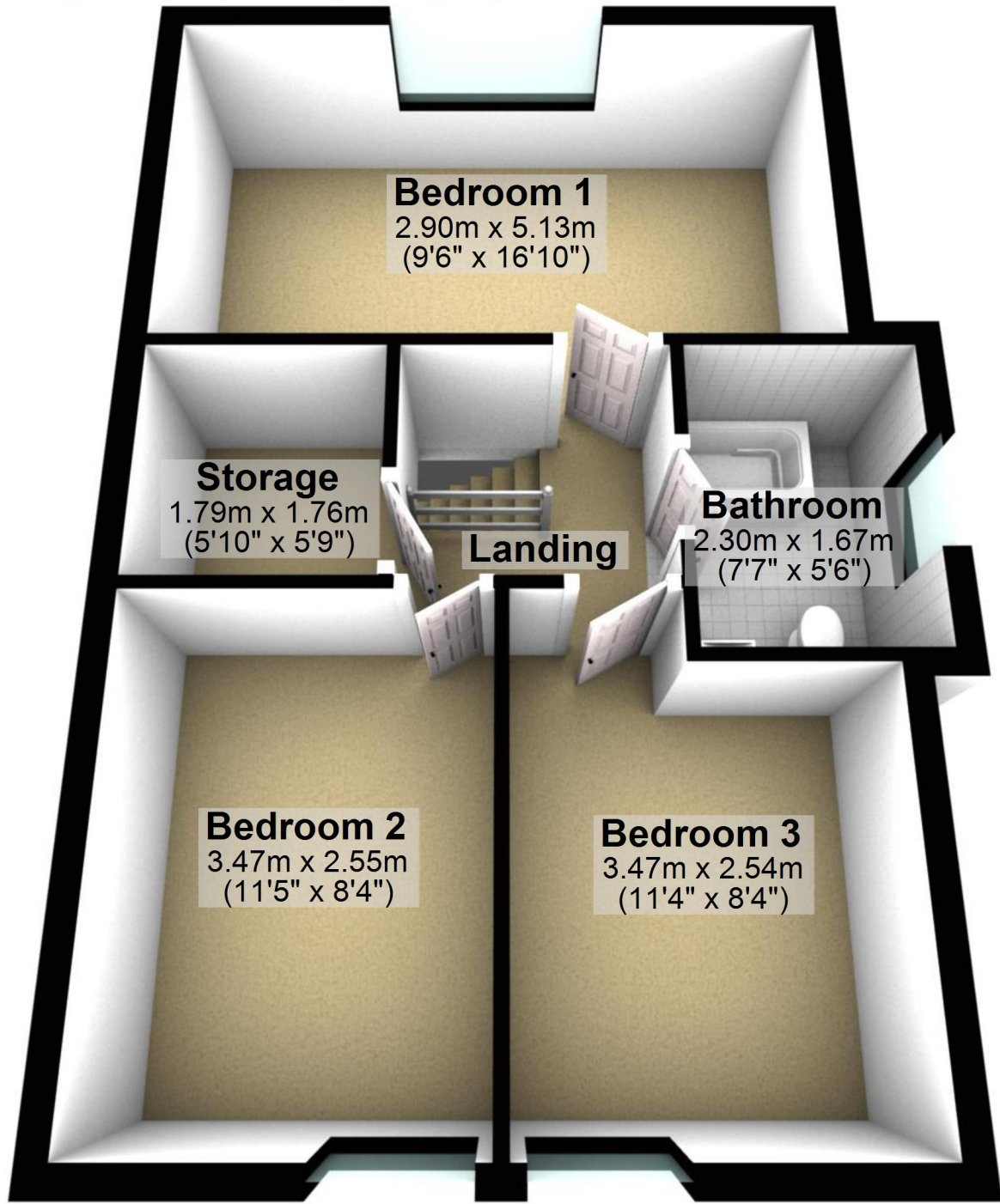


Total area: approx. 114.0 sq. metres (1227.0 sq. feet)

For illustrative purposes only. Not to scale. All sizes are approximate.  
Plan produced using PlanUp.

# First Floor

Approx. 44.4 sq. metres (477.7 sq. feet)



**Bedroom 1**  
2.90m x 5.13m  
(9'6" x 16'10")

**Storage**  
1.79m x 1.76m  
(5'10" x 5'9")

**Landing**

**Bathroom**  
2.30m x 1.67m  
(7'7" x 5'6")

**Bedroom 2**  
3.47m x 2.55m  
(11'5" x 8'4")

**Bedroom 3**  
3.47m x 2.54m  
(11'4" x 8'4")