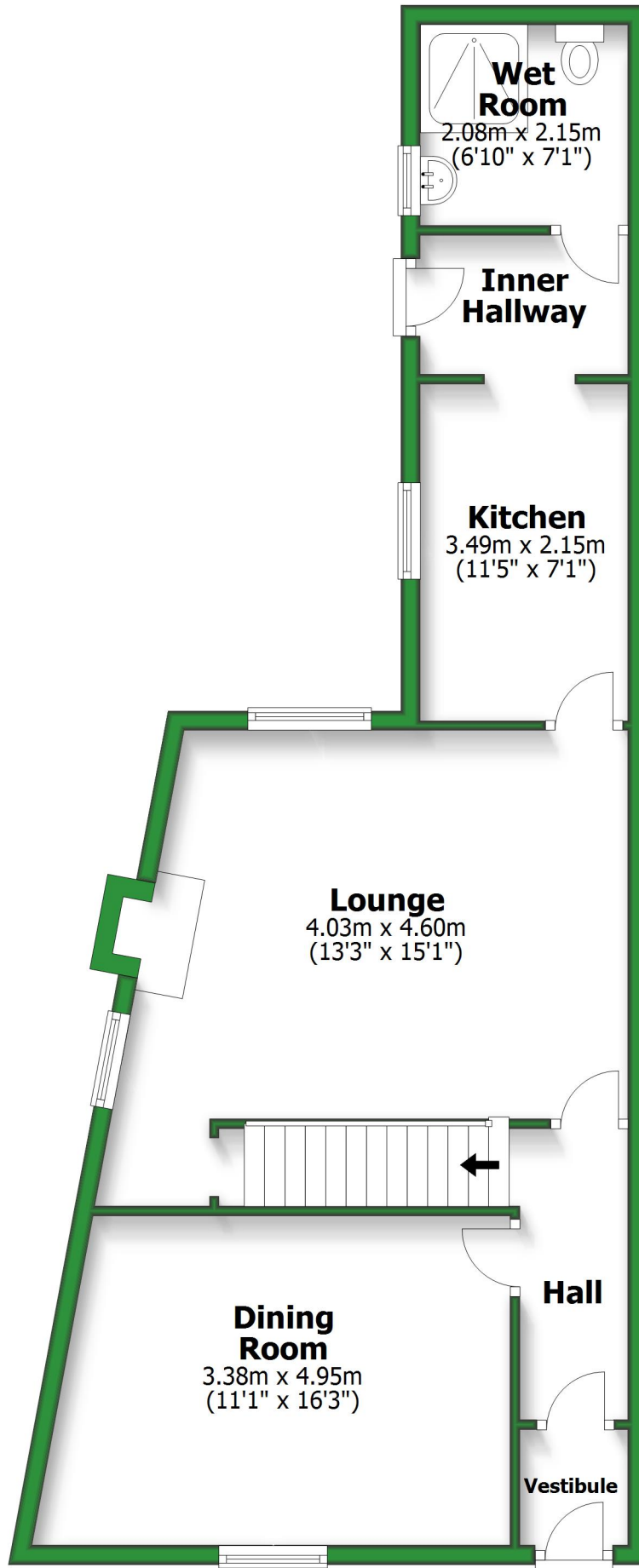


# Ground Floor

Approx. 61.2 sq. metres (659.3 sq. feet)

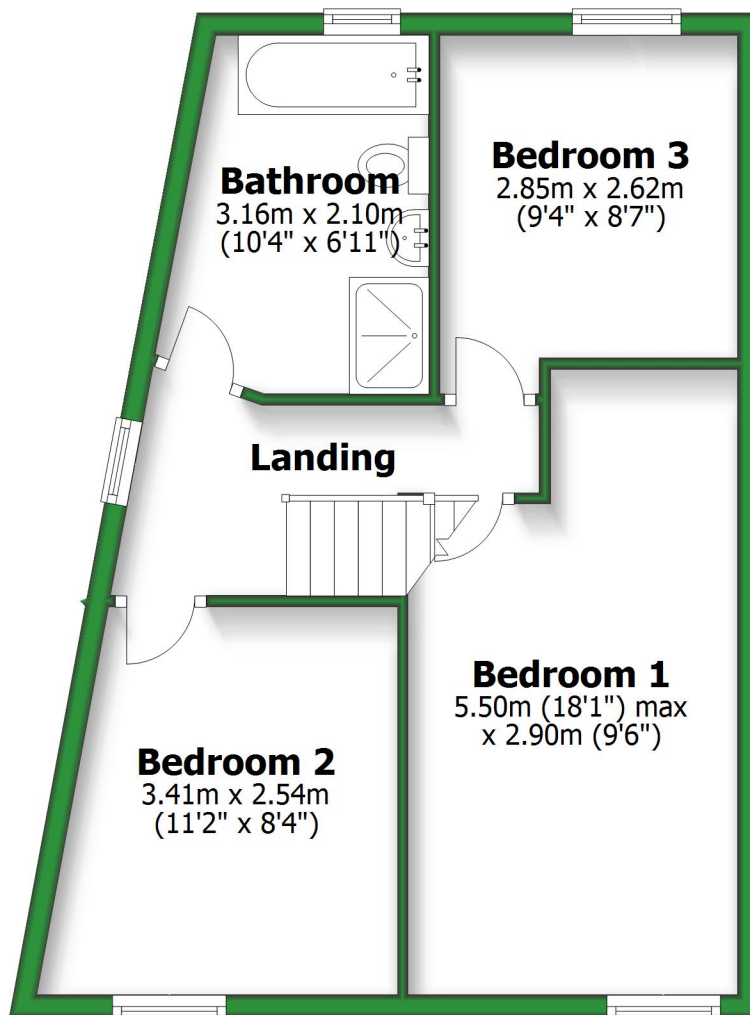


Total area: approx. 106.9 sq. metres (1150.2 sq. feet)

For illustrative purposes only. Not to scale. All sizes are approximate.  
Plan produced using PlanUp.

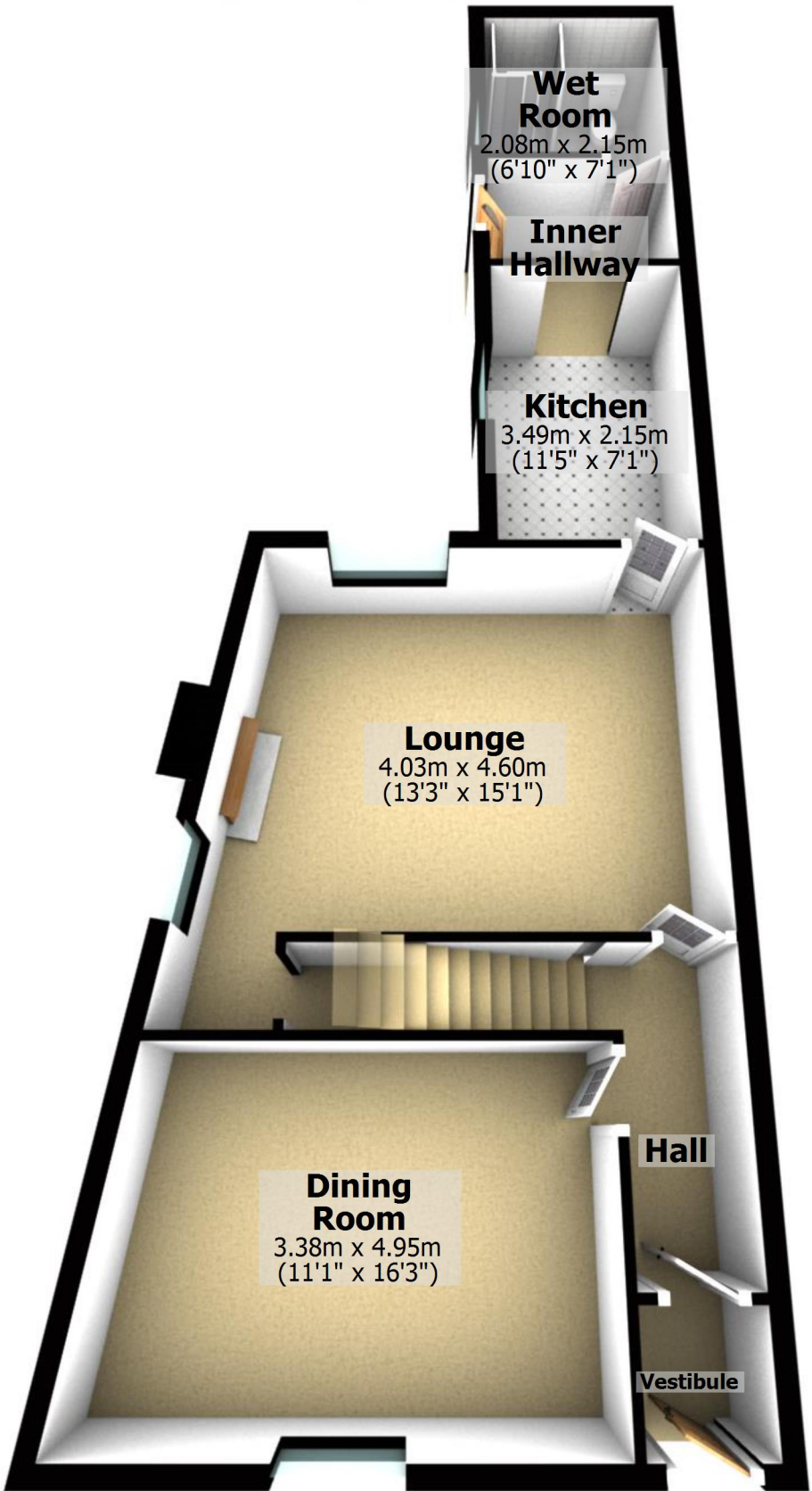
## First Floor

Approx. 45.6 sq. metres (490.9 sq. feet)



## Ground Floor

Approx. 61.2 sq. metres (659.3 sq. feet)



Total area: approx. 106.9 sq. metres (1150.2 sq. feet)

For illustrative purposes only. Not to scale. All sizes are approximate.

Plan produced using PlanUp.

## First Floor

Approx. 45.6 sq. metres (490.9 sq. feet)

