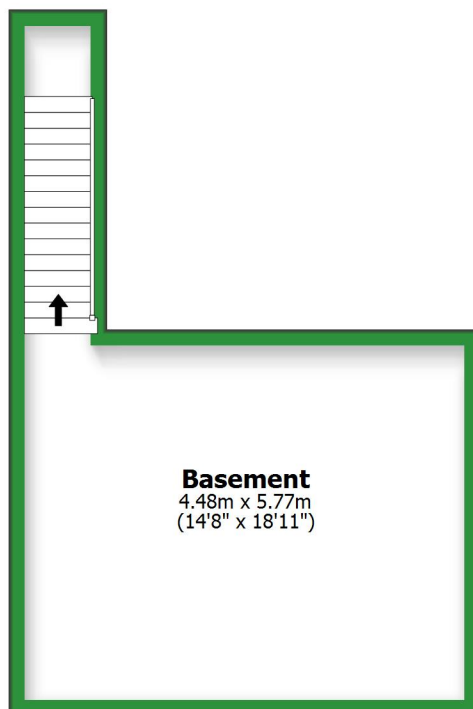


Basement

Approx. 28.4 sq. metres (305.2 sq. feet)



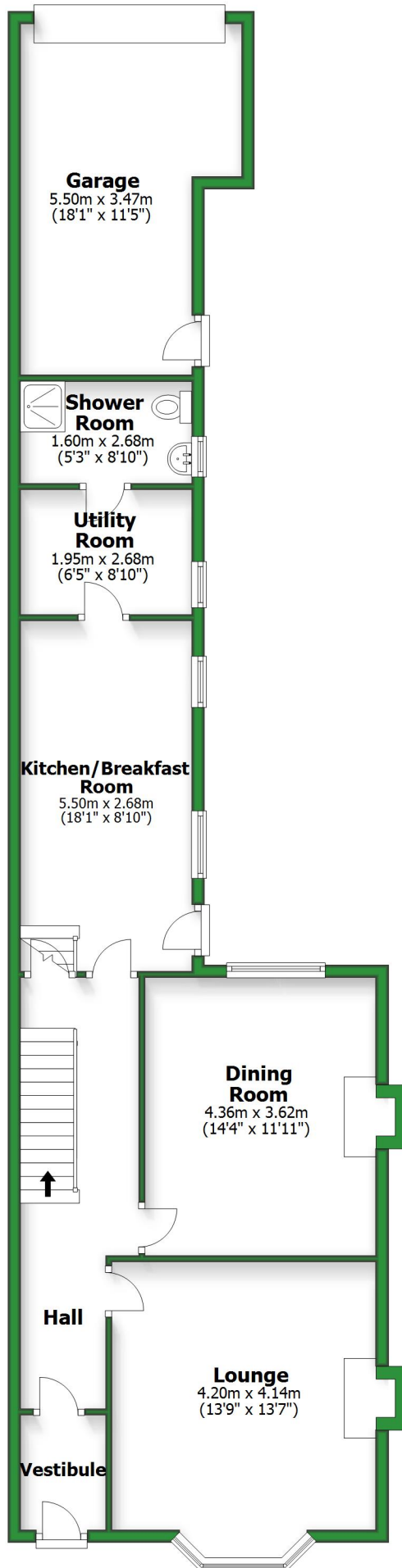
Basement
4.48m x 5.77m
(14'8" x 18'11")

Total area: approx. 214.8 sq. metres (2311.8 sq. feet)

For illustrative purposes only. Not to scale. All sizes are approximate.
Plan produced using PlanUp.

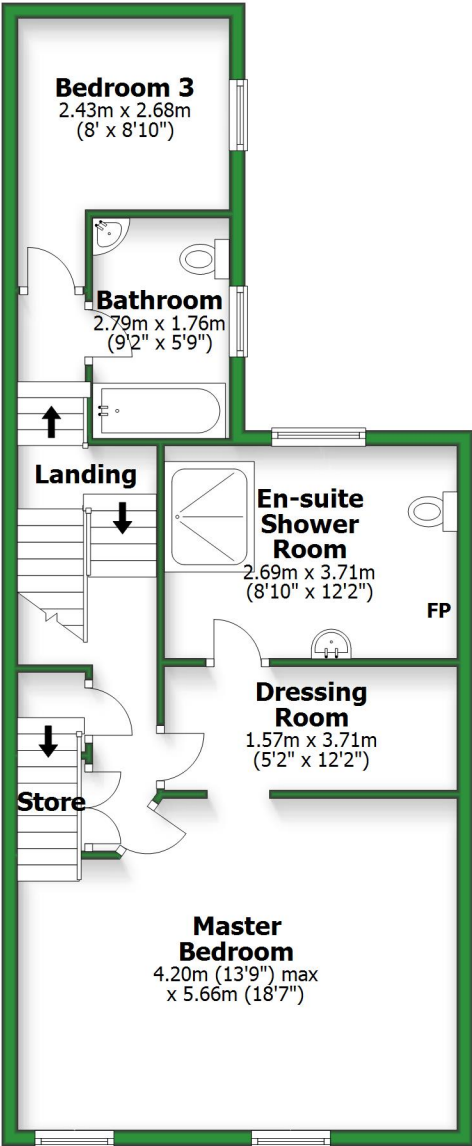
Ground Floor

Approx. 90.4 sq. metres (973.6 sq. feet)



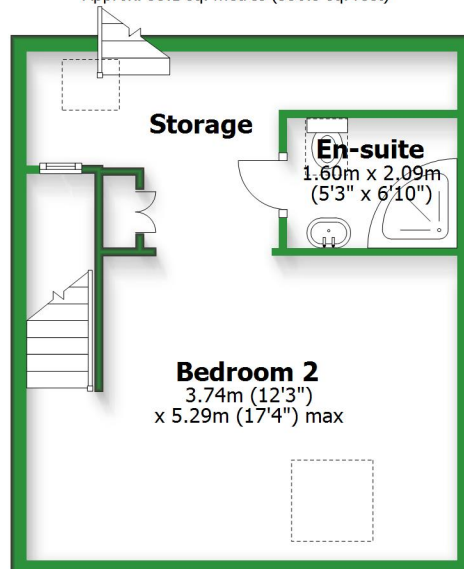
First Floor

Approx. 62.9 sq. metres (676.5 sq. feet)



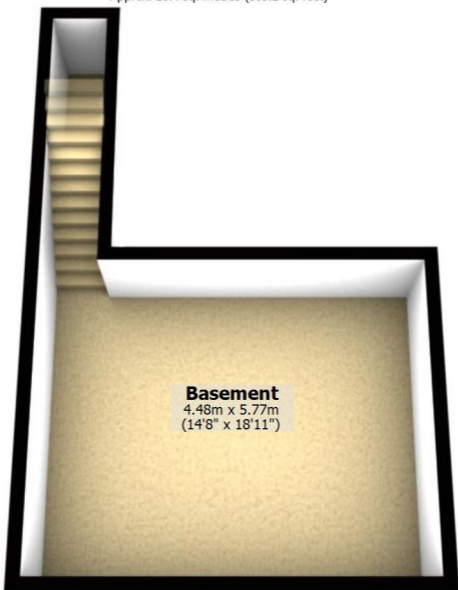
Second Floor

Approx. 33.1 sq. metres (356.5 sq. feet)



Basement

Approx. 28.4 sq. metres (305.2 sq. feet)



Basement

4.48m x 5.77m
(14'8" x 18'11")

Total area: approx. 214.8 sq. metres (2311.8 sq. feet)

For illustrative purposes only. Not to scale. All sizes are approximate.

Plan produced using PlanUp.

Ground Floor

Approx. 90.4 sq. metres (973.6 sq. feet)

Garage
5.50m x 3.47m
(18'1" x 11'5")

Shower Room
1.60m x 2.68m
(5'3" x 8'10")

Utility Room
1.95m x 2.68m
(6'5" x 8'10")

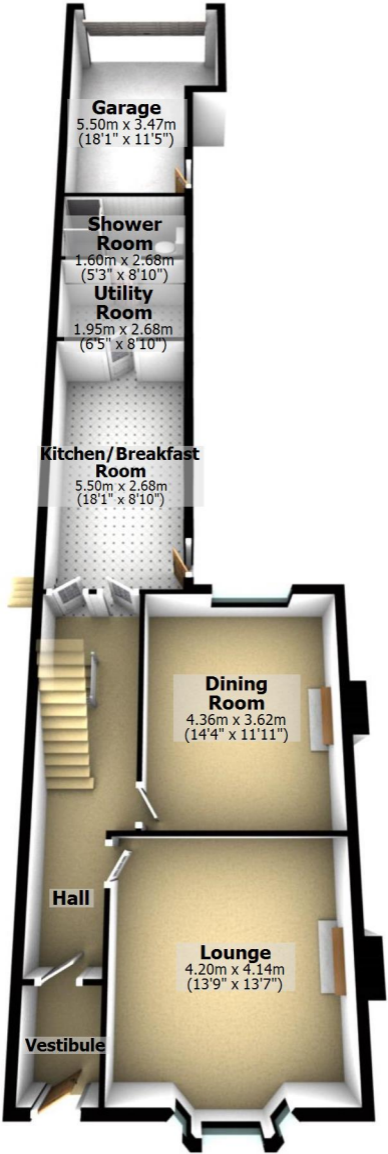
Kitchen/Breakfast Room
5.50m x 2.68m
(18'1" x 8'10")

Dining Room
4.36m x 3.62m
(14'4" x 11'11")

Hall

Lounge
4.20m x 4.14m
(13'9" x 13'7")

Vestibule



First Floor

Approx. 62.9 sq. metres (676.5 sq. feet)

Bedroom 3
2.43m x 2.68m
(8' x 8'10")

Bathroom
2.79m x 1.76m
(9'2" x 5'9")

Landing

**En-suite
Shower
Room**

2.69m x 3.71m
(8'10" x 12'2")

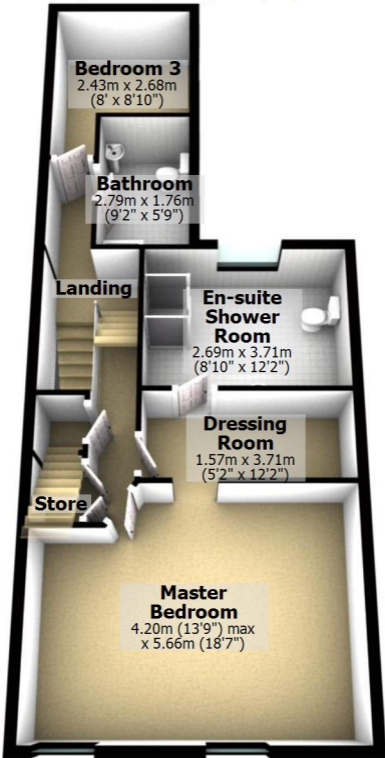
**Dressing
Room**

1.57m x 3.71m
(5'2" x 12'2")

Store

**Master
Bedroom**

4.20m (13'9") max
x 5.66m (18'7")



Second Floor

Approx. 33.1 sq. metres (356.5 sq. feet)

