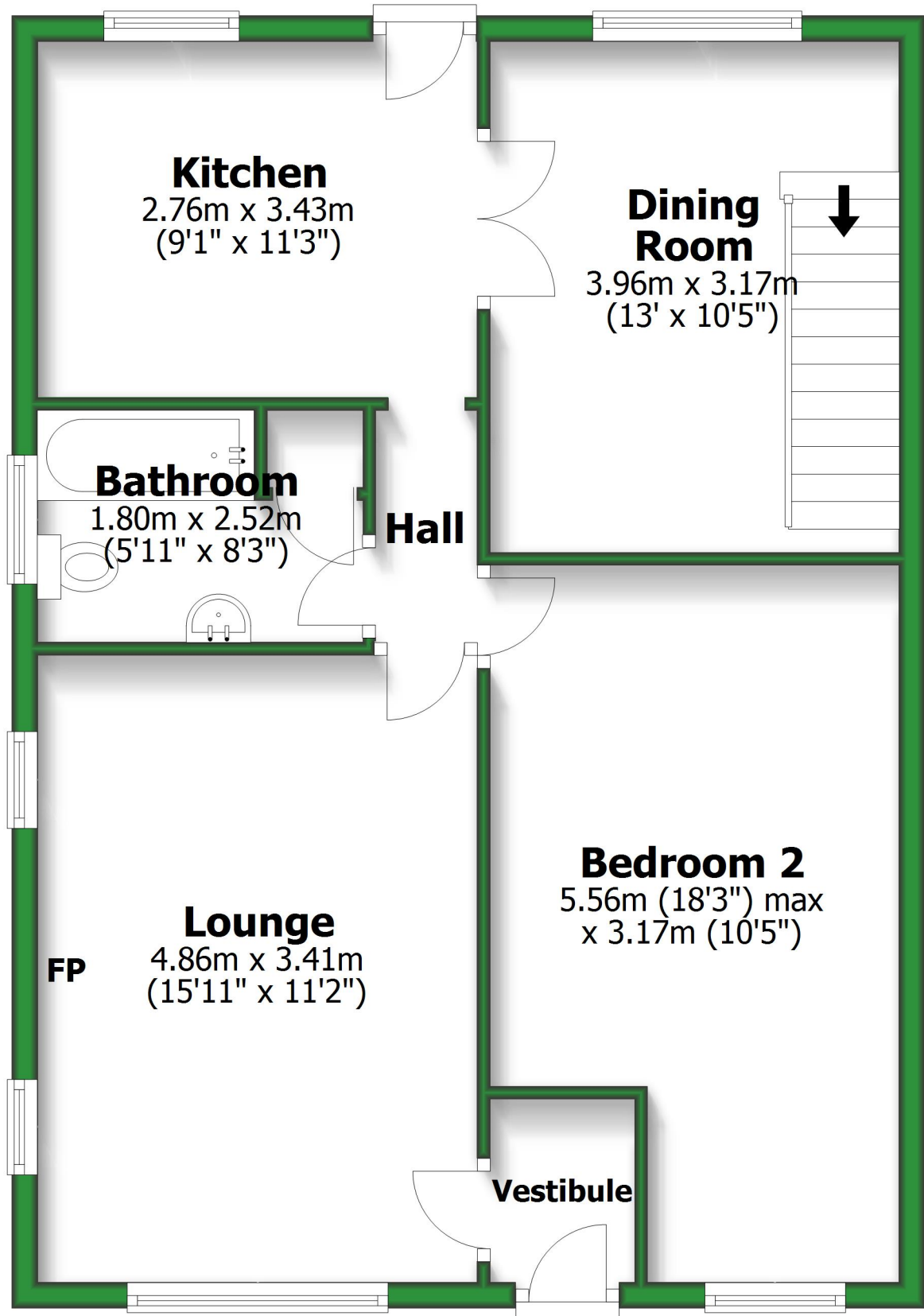


# Ground Floor

Approx. 64.3 sq. metres (692.3 sq. feet)



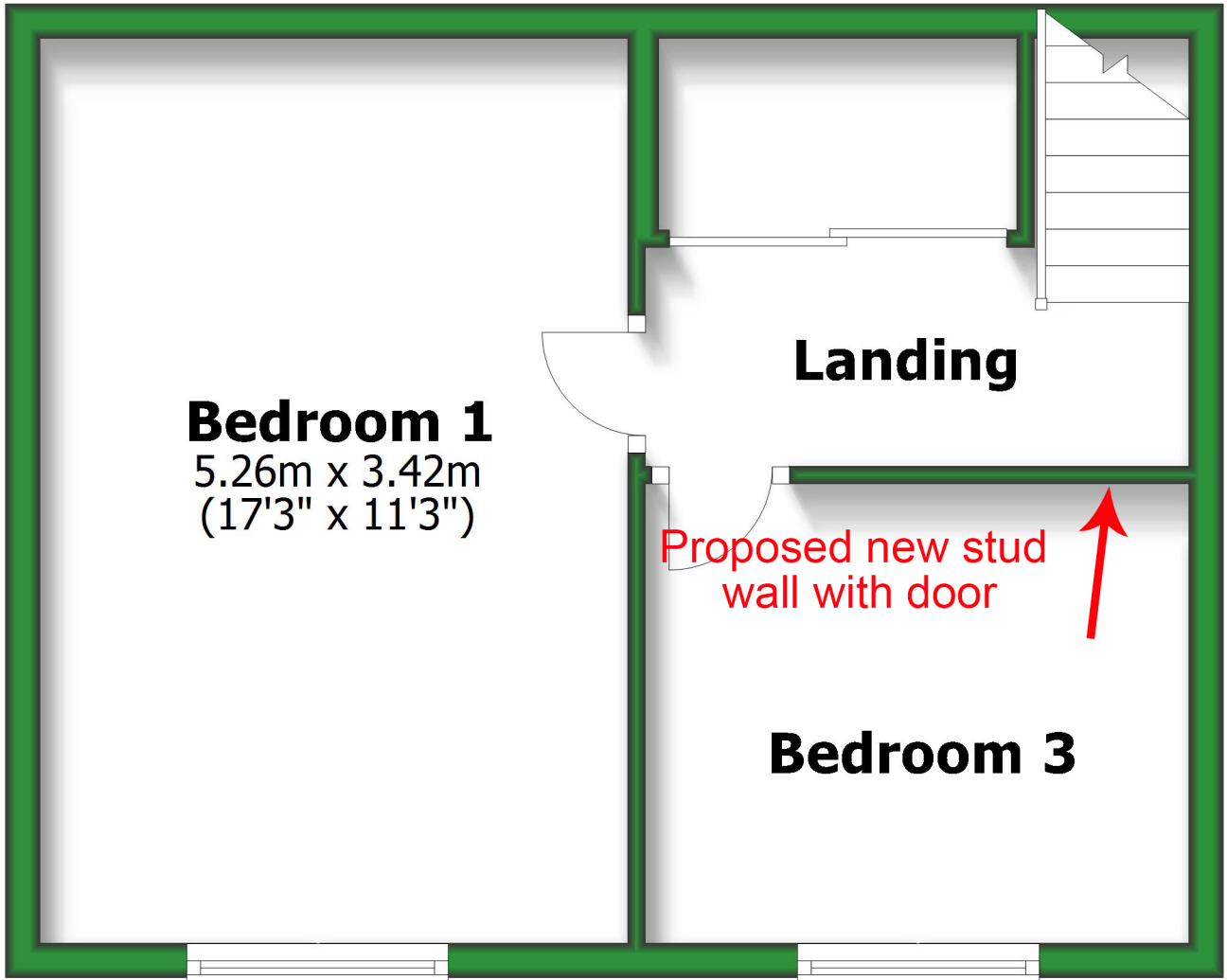
Total area: approx. 101.0 sq. metres (1087.1 sq. feet)

For illustrative purposes only. Not to scale. All sizes are approximate.

Plan produced using PlanUp.

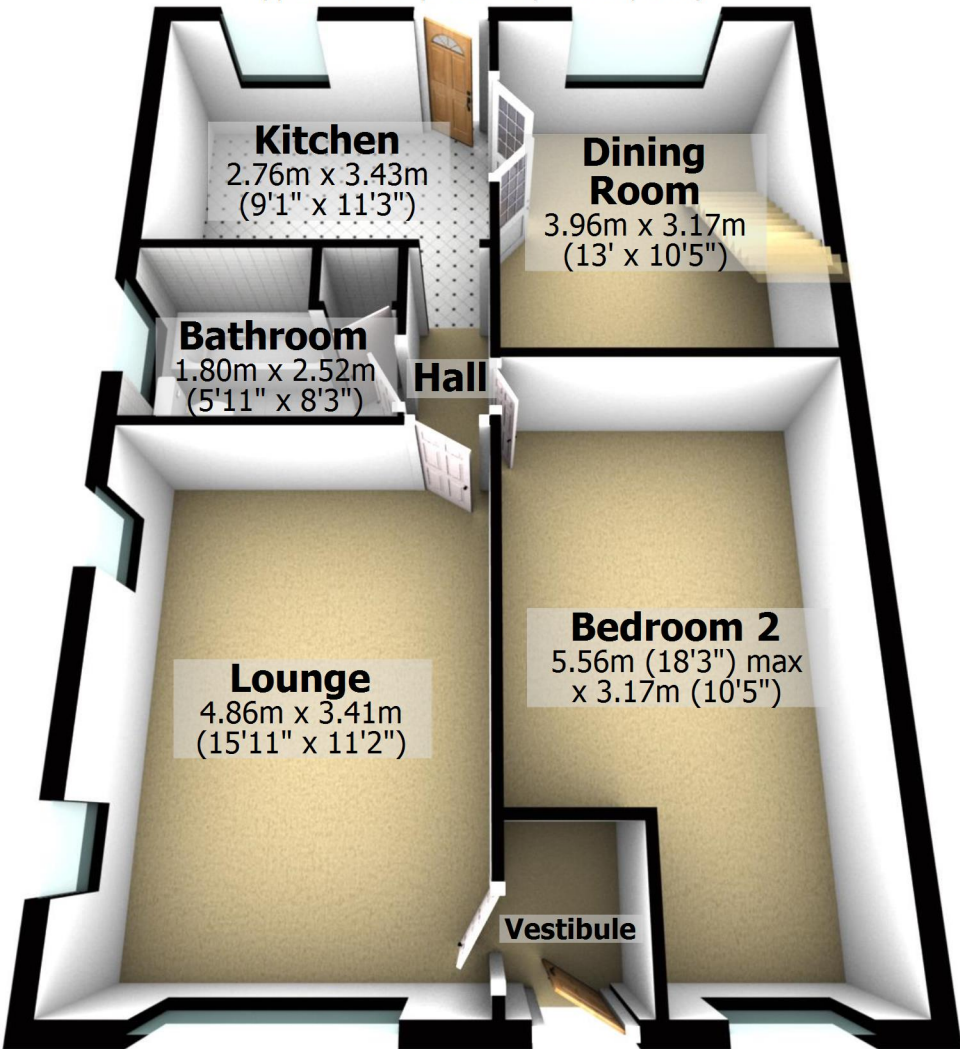
# First Floor

Approx. 36.7 sq. metres (394.8 sq. feet)



# Ground Floor

Approx. 64.3 sq. metres (692.3 sq. feet)



Total area: approx. 101.0 sq. metres (1087.1 sq. feet)

For illustrative purposes only. Not to scale. All sizes are approximate.

Plan produced using PlanUp.

# First Floor

Approx. 36.7 sq. metres (394.8 sq. feet)

