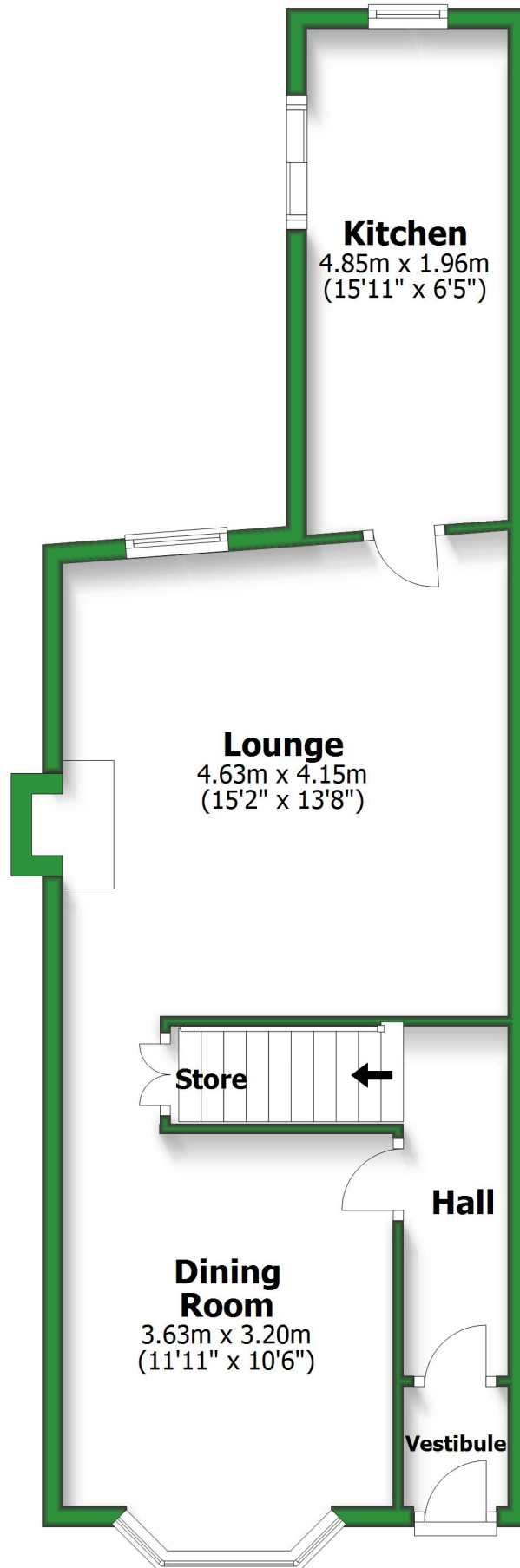


# Ground Floor

Approx. 50.5 sq. metres (543.8 sq. feet)

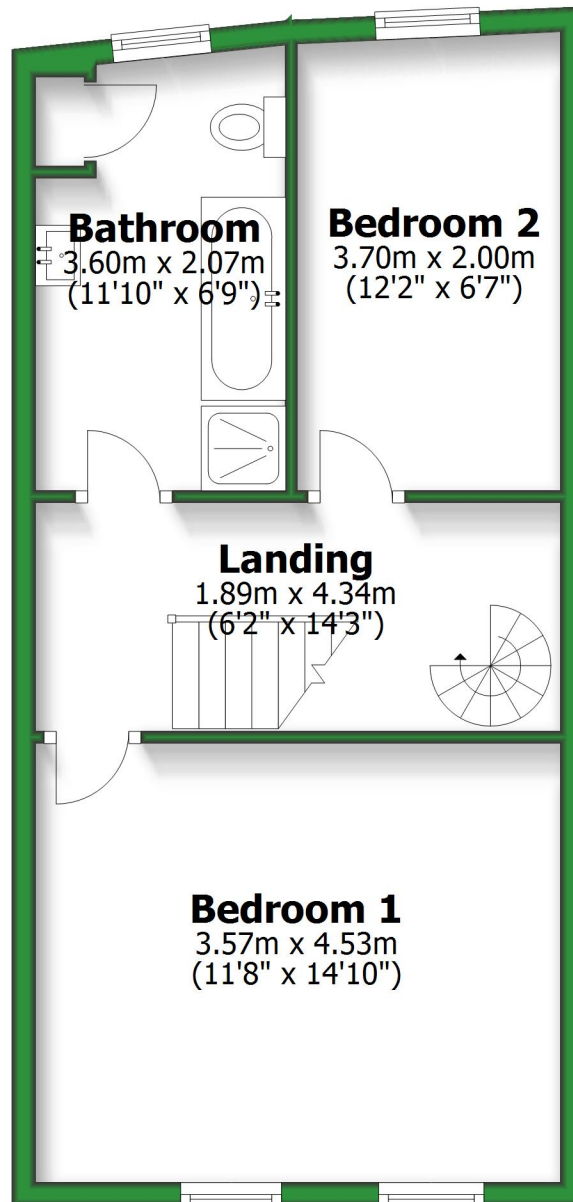


Total area: approx. 116.6 sq. metres (1255.3 sq. feet)

For illustrative purposes only. Not to scale. All sizes are approximate.  
Plan produced using PlanUp.

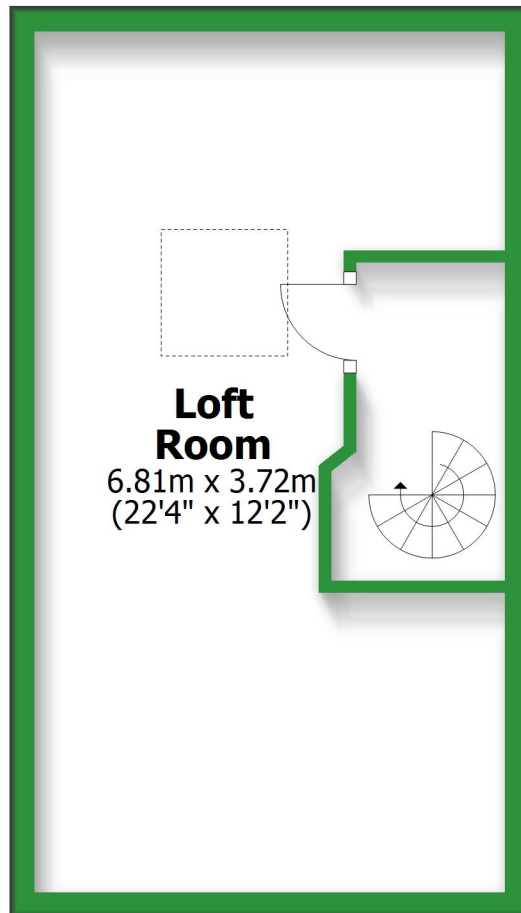
## First Floor

Approx. 40.8 sq. metres (438.8 sq. feet)



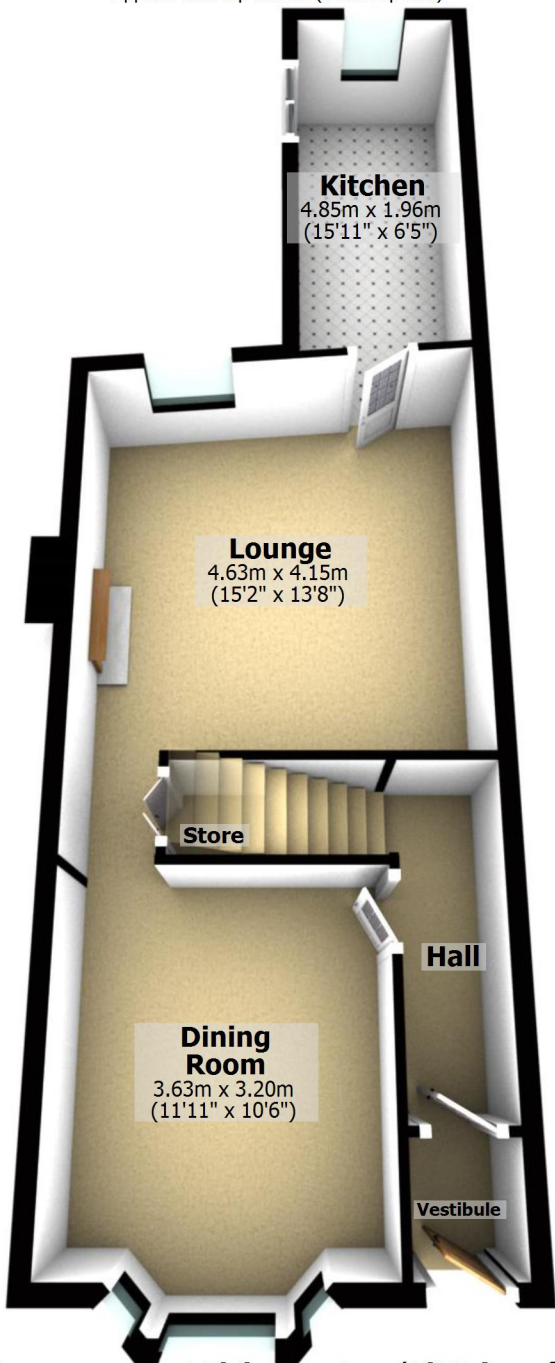
## Second Floor

Approx. 25.3 sq. metres (272.7 sq. feet)



# Ground Floor

Approx. 50.5 sq. metres (543.8 sq. feet)



## Kitchen

4.85m x 1.96m  
(15'11" x 6'5")

## Lounge

4.63m x 4.15m  
(15'2" x 13'8")

## Store

## Dining Room

3.63m x 3.20m  
(11'11" x 10'6")

## Hall

## Vestibule

Total area: approx. 116.6 sq. metres (1255.3 sq. feet)

For illustrative purposes only. Not to scale. All sizes are approximate.

Plan produced using PlanUp.

## First Floor

Approx. 40.8 sq. metres (438.8 sq. feet)

### Bathroom

3.60m x 2.07m  
(11'10" x 6'9")

### Bedroom 2

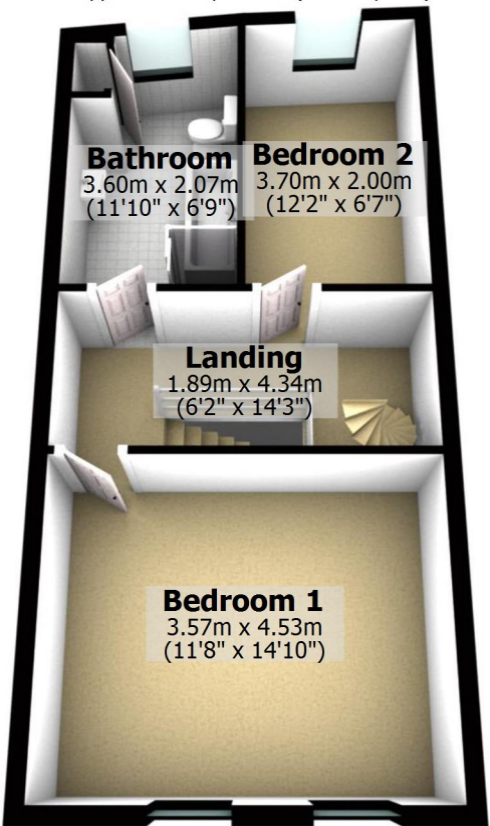
3.70m x 2.00m  
(12'2" x 6'7")

### Landing

1.89m x 4.34m  
(6'2" x 14'3")

### Bedroom 1

3.57m x 4.53m  
(11'8" x 14'10")



## Second Floor

Approx. 25.3 sq. metres (272.7 sq. feet)

### Loft Room

6.81m x 3.72m  
(22'4" x 12'2")

